



MANUAL BRUSH SHOWERS

PULP & PAPER INDUSTRY

REDUCE MAINTENANCE AND CLOGGING WITH MANUAL BRUSH SHOWERS

The Manual Brush Shower is designed with a handwheel at the end of the shower. Turning the handwheel during the cleaning cycle rotates the interior brush assembly to scrub debris from the interior wall of the shower as well as each nozzle orifice. Manual Brush Showers are a cost-effective and reliable way to keep your nozzles clean. In just a few seconds, debris is swept away through the drain valve, restoring full liquid flow to the system. The internal brush, shaft, flange, and bolt connections are made from 316L stainless steel.

Ask about the Automatic Brush Shower which maximizes uptime as operator intervention is eliminated. Our spray experts can help analyze your operation and choose the products that best fit your application.

FEATURES

- All showers are built-to-order; designed and fabricated according to production specifications
- Efficiently clear shower nozzles of debris in less than one minute
- Recommended for use with most hydraulic nozzles
- Internal cleaning with brush rotation and axial movement

SPECIFICATIONS

Maximum operating pressure: 800 psi (55 bar)
Standard pipe size: 1.5 in. to 6 in.
Maximum pipe length: 42 ft (12.8 m)
Flow rate: 65 gpm to 1035 gpm (246 lpm to 3918 lpm)
Maximum liquid temperature: 100°F (38°C)
Material: Nozzle and pipe are 316L stainless steel
Inlet connection: NPT, BSPT, flanged, others available

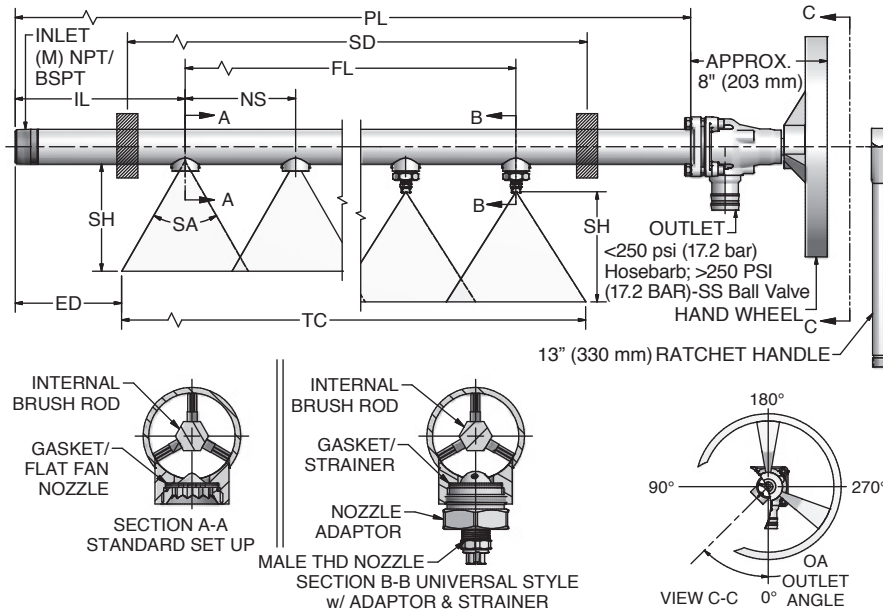
IDEAL FOR:

- Lubrication Showers
- Fan Showers
- HP Cleaning Showers
- Flooded Nip Showers



MANUAL BRUSH SHOWER SPECIFICATION WORKSHEET

To obtain a no obligation quotation on our Manual Brush Shower, please review the following information and give us a call to discuss the your application.



SHOWER INFORMATION

Pipe length (PL)*: _____ Total flow*: _____ (gpm or lpm)

Theoretical coverage (TC)*: _____ Operating temperature*: _____ (F or C)

Nozzle spacing (NS): _____ Qty. of nozzles: _____

Inlet to nozzle (IL)*: _____ Handwheel: _____ (Aluminum or SS)

First to last (FL): _____ Ratchet handle: _____ (optional, iron material)

End to edge (ED): _____ Oscillating stroke length*: _____ (in. or mm)

Shower height (SH)*: _____ Spray overlap: _____ (single or double)

Support distance (SD)*: _____ Liquid sprayed: _____

Spray angle (SA)*: _____ (0, 15, 30, 45, 60, 75)

Outlet angle (OA)*: _____

Pipe material*: _____ (316LSS or 304LSS)

Inlet (M)*: _____ (NPT or BSPT)

Operating pressure*: _____ (psi or bar)

*Required

Defaults	Minimums
Material: 316LSS	IL: 4 in. (101.6 mm)
psi: 40 (2.76 bar)	psi: 40 (2.76 bar)
IL: 4 in. (101.6 mm)	Pipe size: 1 - 1/2 in.
SA: 60	NS: 2 in. (50.8 mm)
OA: 0 (zero)	
Handwheel (Alum)	
Inlet: (M) NPT	
Spray overlap: 1	
Temp: 100°F (38°C)	

To learn more about our paper applications online, visit spray.com/applications/showers-for-pulp-and-paper



North Avenue and Schmale Road, P.O. Box 7900, Wheaton, IL 60187-7901 USA

Tel: 1.800.95.SPRAY Intl. Tel: 1.630.665.5000
 Fax: 1.888.95.SPRAY Intl. Fax: 1.630.260.0842

www.spray.com

