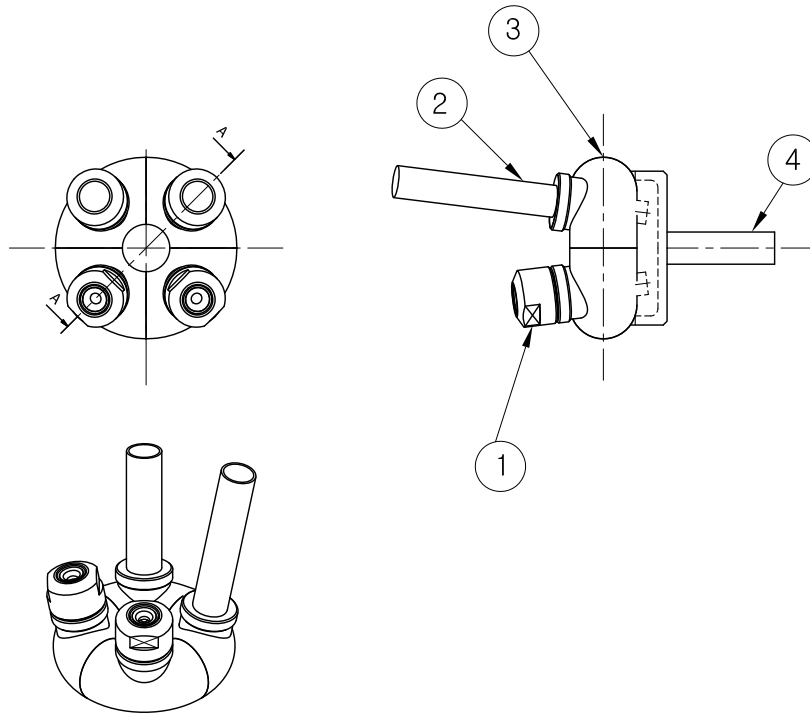


ECO NO.	DATE	REVISION & DESCRIPTION	REVWED	CHECKED
△				
△				



NOZZLE VIEW

NOTE.
1.NOZZLE 1EA TEST DATA SEET
2. 도장 2.5G 6/2

NOZZLE SPECIFICATION						
Nozzle No.	Air Pressure (kg/cm ²)	Water Pressure (kg/cm ²)	Water Flow Rate/EA (l/min)	SPRAY ANGLE	Nozzle Q'ty (sets)	Material
1-1/4-EFM40-SS	2.4	2.4	20 (Total: 40)	31°	2	316LSS

ITEM	DESCRIPTION	SIZE	MATERIAL	Q'TY	REMARKS
4	PIPE-2	32A x Sch80S SMLS	316LSS	1	
3	ELBOW-2	80A x Sch40S	316LSS	1	
2	PIPE-1	32A x Sch80S SMLS	316LSS	1	
1	NOZZLE	1-1/4-EFM40-316LSS	316LSS	1	

지시의 용접치수	절삭가공치수의 지시와 일반치수 허용차 (KS B ISO2768-1 중급)					
	구분	0.5 이상 3 이하	3 을초과 6 이하	6 을초과 30 이하	30 을초과 120 이하	120 을초과 400 이하
	허용차	±0.1	±0.1	±0.2	±0.3	±0.5
지시외 모서리부분	SURFACE ROUGHNESS (KS B 0617)					
	다듬질기호	~	▽	▽▽	▽▽▽	▽▽▽▽
	Rmax		100S	25S	6.3S	0.8S

SPECIFICATION	
PRESSURE (XXX) (kg/cm ²)	SPRAY ANGLE (±7°) (XXX)~(XXX)~(XXX)
	(XXXX)~(XXXX)~(XXXX)
	CAPACITY (ℓ/min ±7%)

DESC.	K194205-316LSS-EFM40 EFM40 NOZZLE HOT WATER COOLING		CUSTOMER :		
APP BY.	CH BY.	DES BY.	PRODUCT NAME :		
J.H.JUNG	T.H.JUNG	S.H.LEE			
	SCALE :	CREATE DATE :			
	1:4	2021.05.03			
	THIRD ANGLE	DWG. NO. :			
		56194-205-C1			

Spraying Systems Co., Korea
Export in Spray Technology