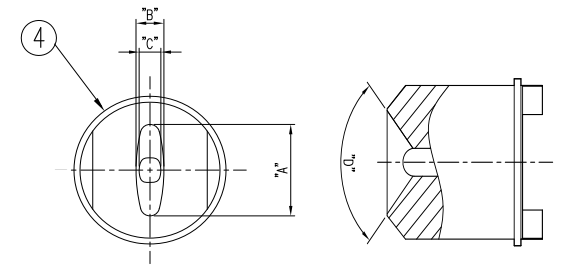
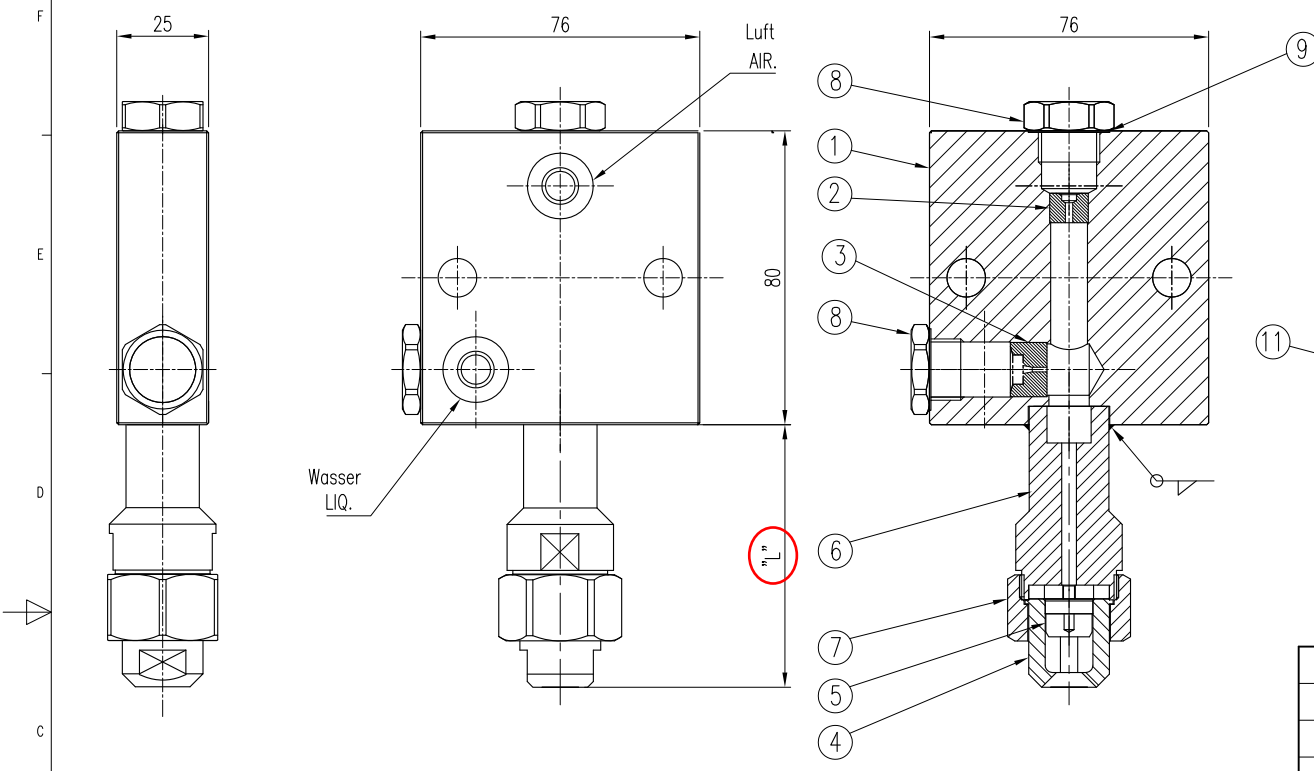


ECO NO.	DATE	REVISION & DESCRIPTION	REVISED	CHECKED

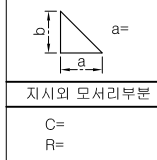


PART NO.	"A"	"B"	"C"	"D"
KCTP170187-00	14.8	4.4	3.4	99°
KCTP170187-01	14.8	4.4	3.4	99°
KCTP170187-02	15.5	4.6	3.4	99°
KCTP170187-03	13.8	5.1	3.3	96°
KCTP170187-04,05	13.4	5.5	3.6	88°

11	FILTER (4067-SS-20)	SUS302	1	
10	O-RING (ID9x3t)	VITON	1	
9	GASKET	COPPER	2	
8	PLUG	SUS304	2	
7	RETAINER RING	SUS304	1	
6	TIP ADAPTER	SUS304	1	
5	TIP CORE	SUS304	1	
4	TIP	SUS304	1	
3	LIQDE INSERT	SUS304	1	
2	AIR INSERT	SUS304	1	
1	BODY	SUS304	1	
ITEM	COMPONENT	MATERIAL	Q'TY	REMARKS

SPECIFICATION								
PART NO. (SSCO)	TIP NO.	WATER PRESSURE (kgf/cm ²)	AIR PRESSURE (kgf/cm ²)	WATER FLOW RATE (L/MIN)	AIR FLOW RATE (M ³ /HR)	SPRAY ANGLE (°)	SPRAY DEPTH ANGLE (°)	"L"
KCJ170187-00	KCTP170187-00	0.5	2.0	0.5	5.6	90	28	71.5
KCJ170187-01	KCTP170187-01	0.5	2.0	0.2	4.5	90	38	90.5
KCJ170187-02	KCTP170187-02	0.5	2.0	0.5	5.6	90	35	66.5
KCJ170187-03	KCTP170187-03	0.5	2.0	0.2	4.4	90	31	90.5
KCJ170187-04	KCTP170187-04	1.0	2.0	0.5	3.8	85	31	76.5
KCJ170187-05	KCTP170187-05	1.0	2.0	0.4	3.5	87	32	100.5

SPECIFICATION						PRESSURE (XXX) (kg/cm ²)	SPRAY ANGLE (±7°) (XXX)~(XXX)~(XXX) (XXX)~(XXX)~(XXX) CAPACITY (ℓ/min ±7%)
구분	0.5 이상 3 이하	3 초과 6 이하	6 초과 30 이하	30 초과 120 이하	120 초과 400 이하		
허용차	±0.1	±0.1	±0.2	±0.3	±0.5		



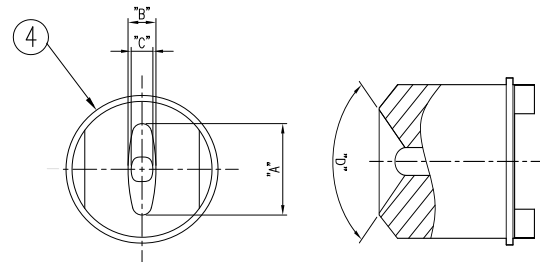
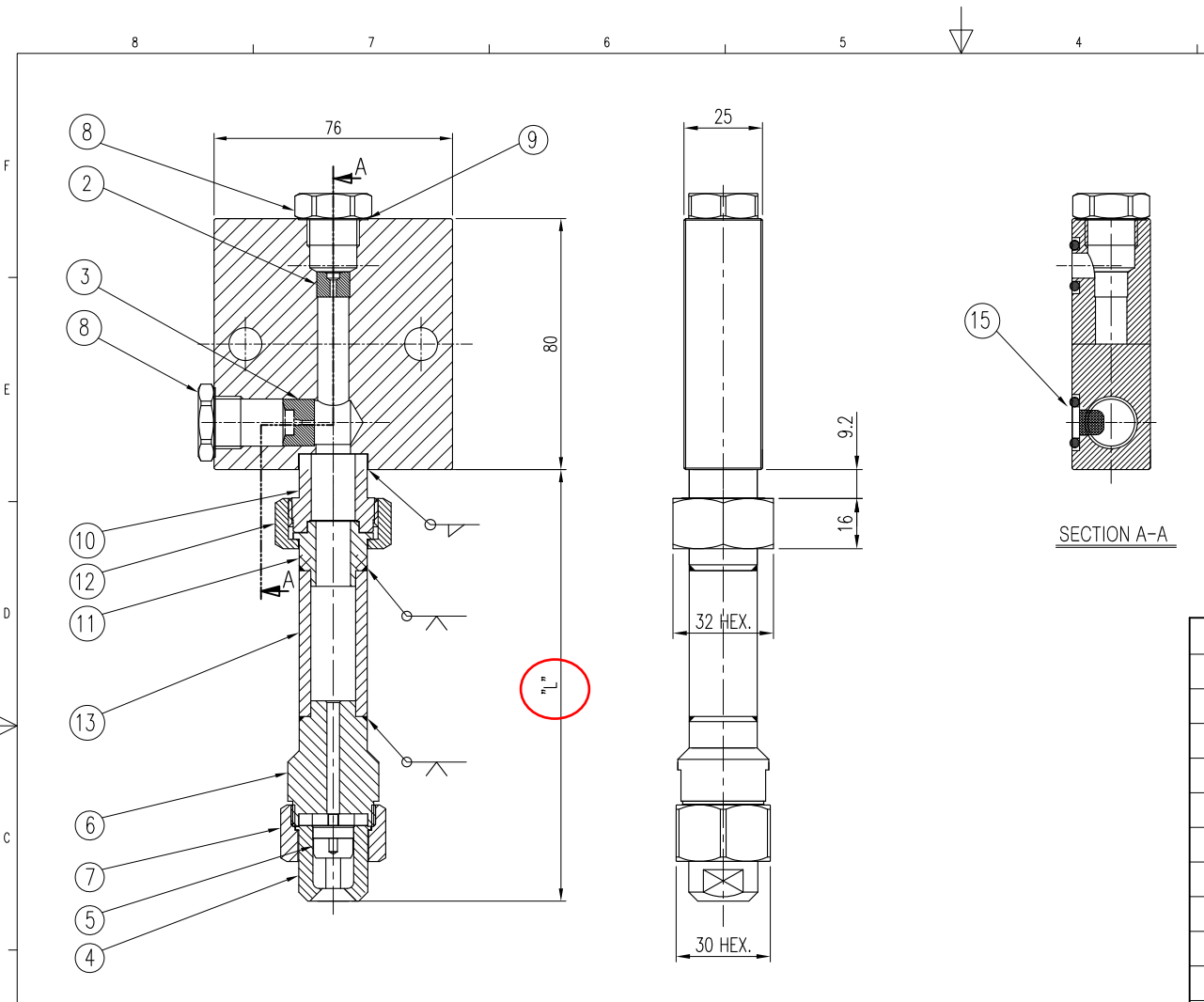
DESC. KCJ170187-00~05 CUSTOMER :
CASTERJET

APP BY. B.S.KIM CH BY. J.M.LEE DES BY. J.KIM PRODUCT NAME :

SCALE : 1:2.5 CREATE DATE : 2015.01.15
THIRD ANGLE DWG. NO. : 56170-187-C1

Spraying Systems Co., Korea
Experts in Spray Technology

ECO NO.	DATE	REVISION & DESCRIPTION	REVISED	CHECKED



PART NO.	"A"	"B"	"C"	"D"
KCTP170187-06,08	13.4	5.5	3.6	88°
KCTP170187-11,12	14.0	5.2	3.2	104°

SECTION A-A

TIP

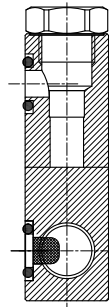
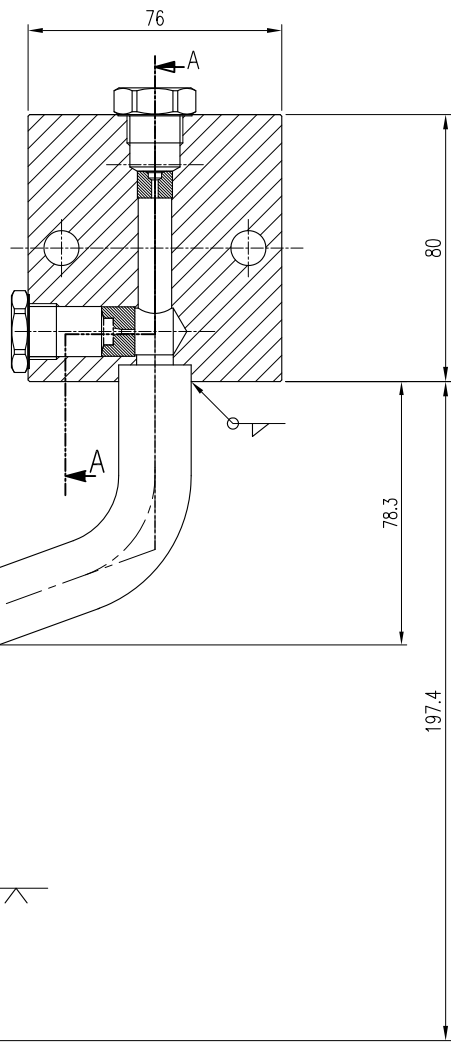
ITEM	COMPONENT	MATERIAL	Q'TY	REMARKS
15	FILTER (4067-SS-20)	SUS302	1	
14	O-RING (ID9x3t)	VITON	1	
13	PIPE (15AxSch80)	SUS304	1	
12	NUT	SUS304	1	
11	PIPE ADAPTER	SUS304	1	
10	BODY ADAPTER	SUS304	1	
9	GASKET	COPPER	2	
8	PLUG	SUS304	2	
7	RETAINER RING	SUS304	1	
6	CAP ADAPTER	SUS304	1	
5	TIP CORE	SUS304	1	
4	TIP	SUS304	1	
3	LIQDE INSERT	SUS304	1	
2	AIR INSERT	SUS304	1	
1	BODY	SUS304	1	

SPECIFICATION								
PART NO.(SSCO)	TIP NO.	WATER PRESSURE (Kgf/Cm2)	AIR PRESSURE (Kgf/Cm2)	WATER FLOW RATE (L/MIN)	AIR FLOW RATE (M3/HR)	SPRAY ANGLE (°)	SPRAY DEPTH ANGLE(°)	"L"
KCJ170187-06	KCTP170187-06	1.0	2.0	0.4	3.5	90	28	137.5
KCJ170187-08	KCTP170187-08	1.0	2.0	0.6	2.0	90	43	152.5
KCJ170187-11	KCTP170187-11	1.0	2.0	0.4	3.3	88	36	172.5
KCJ170187-12	KCTP170187-12	1.0	2.0	0.3	3.7	97	43	350.5

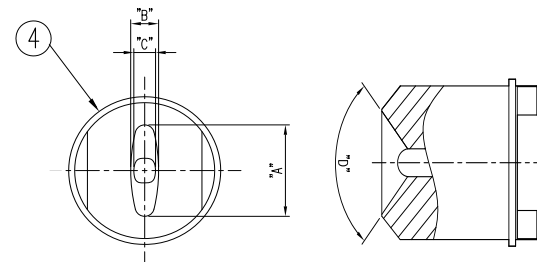
SPECIFICATION						
구분	0.5 이상 3 이하	3 을초과 6 이하	6 을초과 30 이하	30 을초과 120 이하	120 을초과 400 이하	PRESSURE (XXX) (kg/cm ²)
지시외 용접치수	절삭가공치수의 지시외 일반치수 허용차 (KS B ISO2768-1 중급)					
지시외 모서리부분	SURFACE ROUGHNESS (KS B 0617)					
C= R=	다듬질기호	~	▽	▽▽	▽▽▽	SPRAY ANGLE (±7°) (XXX)~(XXX)~(XXX)
	Rmax	100S	25S	6.3S	0.8S	(XXX)~(XXX)~(XXX)
						CAPACITY (ℓ/min ±7%)

DESC.	KCJ170187-06~12		CUSTOMER :	
	CASTERJET			
APP BY.	CH BY.	DES BY.	PRODUCT NAME :	
B.S.KIM	J.M.LEE	J.KIM		
SCALE :		CREATE DATE :		
1:2.5		2015.01.14		
THIRD ANGLE		DWG. NO. :		
① ②		56170-187-C2		





SECTION A-A



PART NO.	"A"	"B"	"C"	"D"
KCTP170187-07	14.0	5.2	3.2	104°

TIP

ECO NO.	DATE	REVISION & DESCRIPTION	REVWED	CHECKED

15	FILTER (4067-SS-20)	SUS302	1	
14	O-RING (ID9x3t)	VITON	1	
13	PIPE (15AxSch80)	SUS304	1	
12	NUT	SUS304	1	
11	PIPE ADAPTER	SUS304	1	
10	BODY ADAPTER	SUS304	1	
9	GASKET	COPPER	2	
8	PLUG	SUS304	2	
7	RETAINER RING	SUS304	1	
6	CAP ADAPTER	SUS304	1	
5	TIP CORE	SUS304	1	
4	TIP	SUS304	1	
3	LIQDE INSERT	SUS304	1	
2	AIR INSERT	SUS304	1	
1	BODY	SUS304	1	
ITEM	COMPONENT	MATERIAL	Q'TY	REMARKS

DESC.	KCJ170187-07	CUSTOMER :	
	CASTERJET		

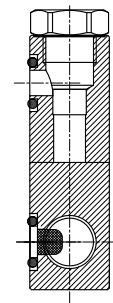
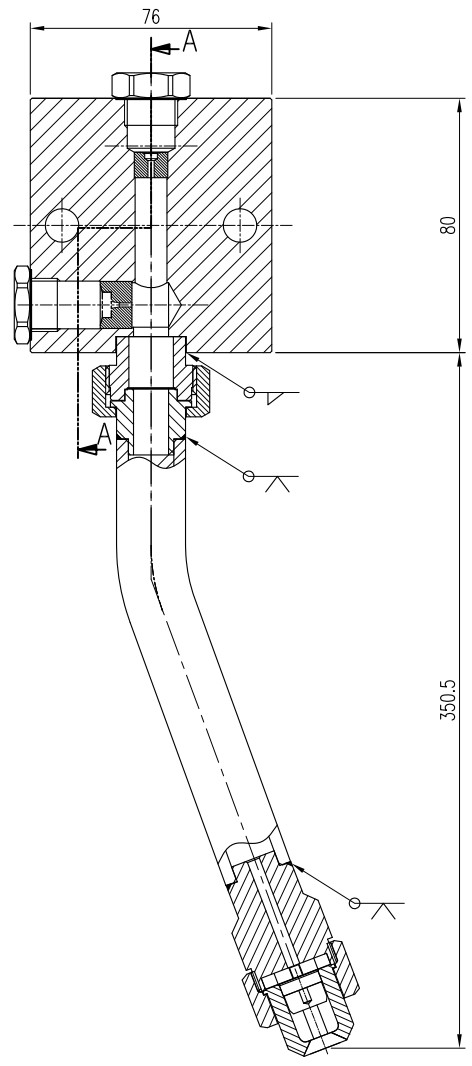
APP BY.	CH BY.	DES BY.	PRODUCT NAME :
B.S.KIM	J.M.LEE	J.KIM	
SCALE :		CREATE DATE :	
1:2.5		2015.01.14	
THIRD ANGLE		DWG. NO. :	
		56170-187-C3	

SPECIFICATION

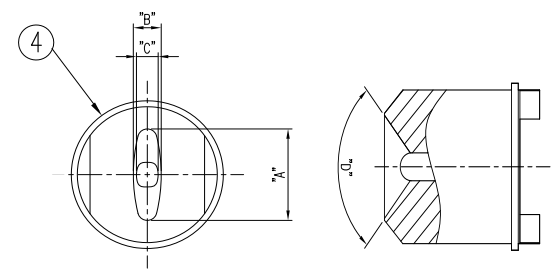
PART NO.(SSCO)	TIP NO.	WATER PRESSURE (Kgf/Cm2)	AIR PRESSURE (Kgf/Cm2)	WATER FLOW RATE (L/MIN)	AIR FLOW RATE (M3/HR)	SPRAY ANGLE (°)	SPRAY DEPTH ANGLE(°)
KCJ170187-07	KCTP170187-07	1.0	2.0	0.4	3.1	95	42

지시외 용접치수		절삭가공치수의 지시외 일반치수 허용차 (KS B ISO2768-1 중급)					SPECIFICATION	
구분	0.5 이상 3 이하	3 을초과 6 이하	6 을초과 30 이하	30 을초과 120 이하	120 을초과 400 이하	PRESSURE (XXX) (kg/cm ²)	SPRAY ANGLE (±7°) (XXX)~(XXX)~(XXX)	
허용차	±0.1	±0.1	±0.2	±0.3	±0.5			CAPACITY (ℓ/min ±7%)
지시외 모서리부분	SURFACE ROUGHNESS (KS B 0617)							
C=	다듬질기호	~	▽	▽▽	▽▽▽			
R=	Rmax	100S	25S	6.3S	0.8S			





SECTION A-A



PART NO.	"A"	"B"	"C"	"D"
KCTP170187-09	13.4	5.5	3.6	88°

TIP

ECO NO.	DATE	REVISION & DESCRIPTION	REVISED	CHECKED

15	FILTER(4067-SS-20)	SUS302	1	
14	O-RING(ID9x3t)	VITON	1	
13	PIPE(15AxSch80)	SUS304	1	
12	NUT	SUS304	1	
11	PIPE ADAPTER	SUS304	1	
10	BODY ADAPTER	SUS304	1	
9	GASKET	COPPER	2	
8	PLUG	SUS304	2	
7	RETAINER RING	SUS304	1	
6	CAP ADAPTER	SUS304	1	
5	TIP CORE	SUS304	1	
4	TIP	SUS304	1	
3	LIQDE INSERT	SUS304	1	
2	AIR INSERT	SUS304	1	
1	BODY	SUS304	1	
ITEM	COMPONENT	MATERIAL	Q'TY	REMARKS

SPECIFICATION

PART NO.(SSCO)	TIP NO.	WATER PRESSURE (Kgf/Cm2)	AIR PRESSURE (Kgf/Cm2)	WATER FLOW RATE (L/MIN)	AIR FLOW RATE (M3/HR)	SPRAY ANGLE (°)	SPRAY DEPTH ANGLE(°)
KCJ170187-09	KCTP170187-09	1.0	2.0	0.4	2.9	103	47

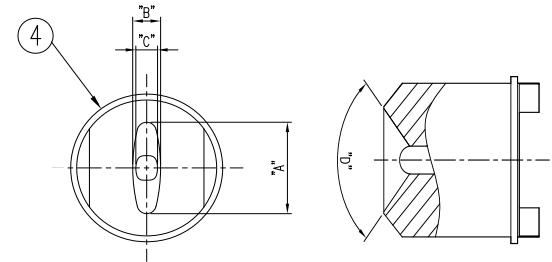
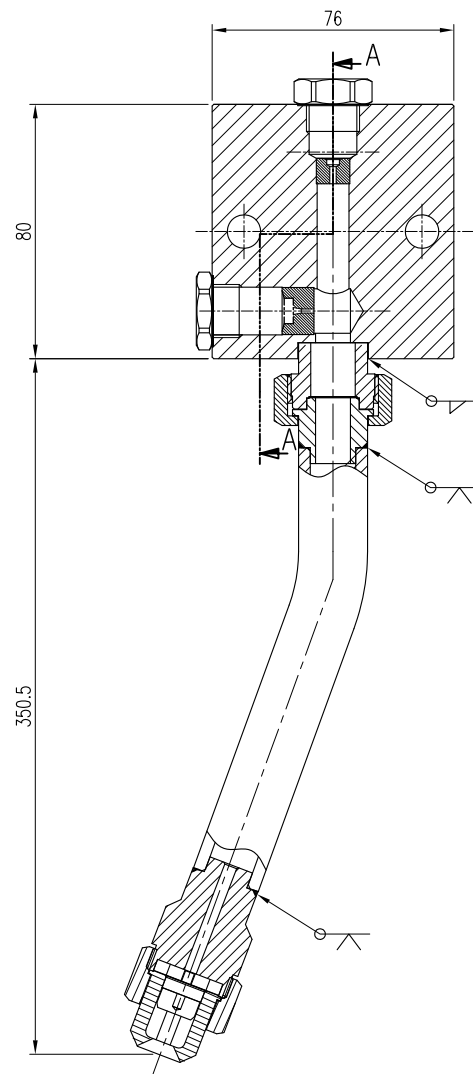
SPECIFICATION

구 분	PRESSURE					SPRAY ANGLE (±7°) (XXX)~(XXX)~(XXX)
	0.5 이상 3 이하	3 을초과 6 이하	6 을초과 30 이하	30 을초과 120 이하	120 을초과 400 이하	
지시외 용접치수	절삭가공치수의 지시외 일반치수 허용차 (KS B ISO2768-1 중급)					(XXX) (kg/cm²)
지시외 모서리부분	SURFACE ROUGHNESS (KS B 0617)					
C=	다듬질기호	~	▽	▽▽	▽▽▽	(XXX)~(XXX)~(XXX) CAPACITY (ℓ/min ±7%)
R=	Rmax	100S	25S	6.3S	0.8S	

DESC.	KCJ170187-09		CUSTOMER :	
	CASTERJET			
APP BY.	CH BY.	DES BY.	PRODUCT NAME :	
B.S.KIM	J.M.LEE	J.KIM		
SCALE :		CREATE DATE :		
1:2.5		2015.01.14		
THIRD ANGLE		DWG. NO. :		
		56170-187-C4		



ECO NO.	DATE	REVISION & DESCRIPTION	REVISED	CHECKED



PART NO.	"A"	"B"	"C"	"D"
KCTP170187-10	13.4	5.5	3.6	88°

TIP

SECTION A-A

ITEM	COMPONENT	MATERIAL	Q'TY	REMARKS
15	FILTER (4067-SS-20)	SUS302	1	
14	O-RING (ID9x3t)	VITON	1	
13	PIPE (15AxSch80)	SUS304	1	
12	NUT	SUS304	1	
11	PIPE ADAPTER	SUS304	1	
10	BODY ADAPTER	SUS304	1	
9	GASKET	COPPER	2	
8	PLUG	SUS304	2	
7	RETAINER RING	SUS304	1	
6	CAP ADAPTER	SUS304	1	
5	TIP CORE	SUS304	1	
4	TIP	SUS304	1	
3	LIQDE INSERT	SUS304	1	
2	AIR INSERT	SUS304	1	
1	BODY	SUS304	1	

SPECIFICATION

PART NO.(SSCO)	TIP NO.	WATER PRESSURE (Kgf/Cm2)	AIR PRESSURE (Kgf/Cm2)	WATER FLOW RATE (L/MIN)	AIR FLOW RATE (M3/HR)	SPRAY ANGLE (°)	SPRAY DEPTH ANGLE (°)
KCJ170187-10	KCTP170187-10	1.0	2.0	0.4	2.8	103	47

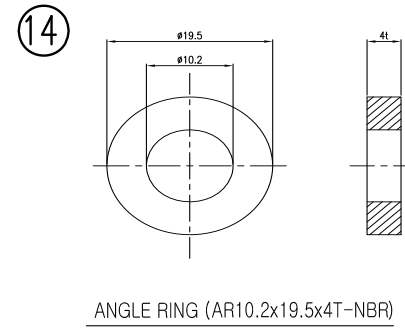
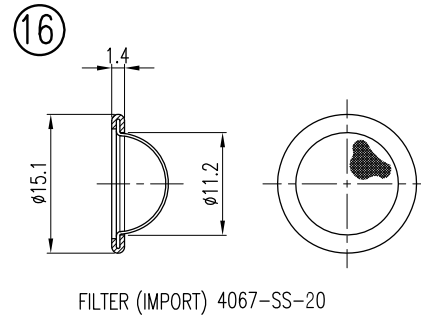
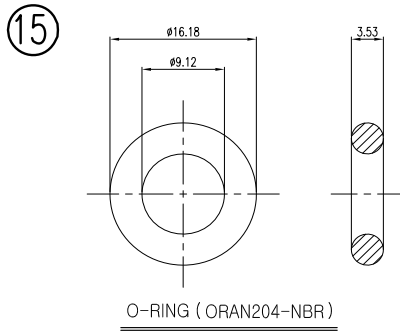
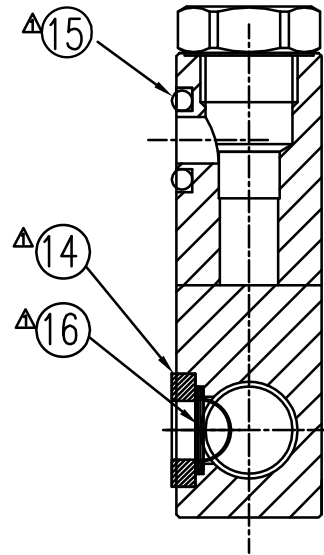
SPECIFICATION

구분	PRESSURE						SPRAY ANGLE (±7°) (XXX)~(XXX)~(XXX)
	0.5 이상 3 이하	3 초과 6 이하	6 초과 30 이하	30 초과 120 이하	120 초과 400 이하	(XXX) (kg/cm ²)	
지시외 용접치수	절삭가공치수의 지시외 일반치수 허용차 (KS B ISO2768-1 중급)						CAPACITY (ℓ/min ±7%)
지시외 모서리부분	SURFACE ROUGHNESS (KS B 0617)						
C=	다듬질기호	~	▽	▽▽	▽▽▽	▽▽▽▽	
R=	Rmax		100S	25S	6.3S	0.8S	

DESC.	KCJ170187-10 CASTERJET	CUSTOMER :	
APP BY.	CH BY.	DES BY.	PRODUCT NAME :
B.S.KIM	J.M.LEE	J.KIM	
SCALE : 1:2.5		CREATE DATE : 2015.01.14	
THIRD ANGLE		DWG. NO. : 56170-187-C5	

 **Spraying Systems Co., Korea**
Experts in Spray Technology

CHECK LIST					ECO NO.	DATE	REVISION & DESCRIPTION	REVWED	CHECKED
LENGTH	ITEM NAME	CONNECTOR	CAPACITY		Δ				
WIDTH	MARKING	ORIFICE	COMMENT		Δ				



16	FILTER (4067-SS-20)			
15	O-RING (ORAN204-NBR)	NBR		
14	ANGLE RING (AR10.2x19.5x4T-NBR)	NBR		
ITEM	COMPONENT	MATERIAL	Q'TY	REMARKS
DESC.	KCJ170187 CASTERJET	CUSTOMER :		

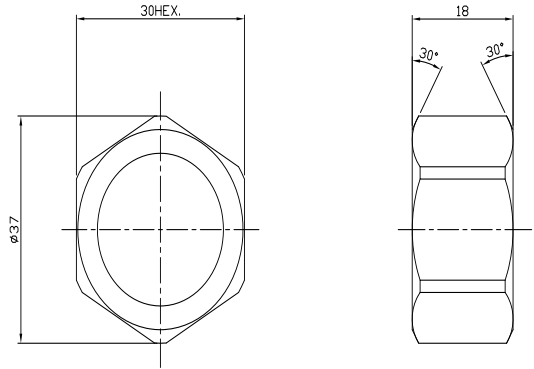
지시의 용접치수	절삭가공치수의 지시와 일반치수 허용차 (KS B ISO2768-1 중급)					
	구분	0.5 이상 3 이하	3 을초과 6 이하	6 을초과 30 이하	30 을초과 120 이하	120 을초과 400 이하
	허용차	±0.1	±0.1	±0.2	±0.3	±0.5
지시외 모서리부분	SURFACE ROUGHNESS (KS B 0617)					
C= R=	다듬질기호	~	▽	▽▽	▽▽▽	▽▽▽▽
	Rmax		100S	25S	6.3S	0.8S

SPECIFICATION	
PRESSURE	SPRAY ANGLE (±7°) (XXX)~(XXX)~(XXX)
(1.75) (kg/cm ²)	(XXX)~(XXX)~(XXX)
	CAPACITY (ℓ/min ±7%)

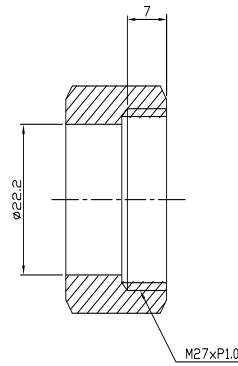
APP BY.	CH BY.	DES BY.	PRODUCT NAME :	
B.S.KIM	J.M.LEE	J.KIM		
		SCALE :	CREATE DATE :	
Spraying Systems Co., Korea Experts in Spray Technology		1.7:1	2014.01.15	
		THIRD ANGLE	DWG. NO. :	
			56170-187-P7	

CHECK LIST					ECO NO.	DATE	REVISION & DESCRIPTION	REVWED	CHECKED
LENGTH	ITEM NAME	CONNECTOR	CAPACITY						
WIDTH	MARKING	ORIFICE	COMMENT						

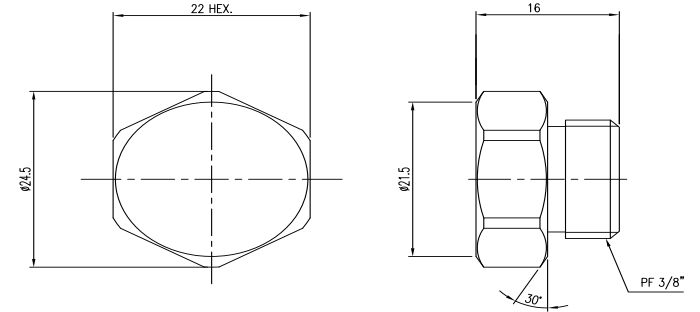
⑦



RETAINER RING(KRT17018-304SS)

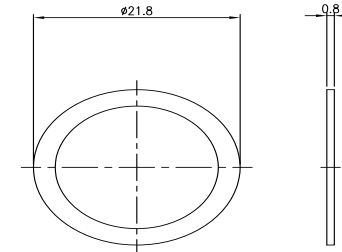


⑧



PLUG(KPG170187-304SS)

⑨



GASKET(KGS170187-CO)

Note

1. 가공후 가공면에 필히 Burr 제거 하시오.
2. 지시없는 R = 0.1
3. 지시없는 C = 0.1
4. 나사부위는 전용 게이지로 Check 하시오.
5. 항상 일정한 부위에 Marking 하시오.
6. Marking 깊이에 유의 하시오.
7. Orifice 및 Hole 가공시 진직도 및 동심도에 유의 하시오.
8. 제작시 변경사항은 도면 표시후 기술부로 필히 반납 바랍니다.

지시의 용접치수	절삭가공치수의 지시와 일반치수 허용차 (KS B ISO2768-1 중급)					
	구 분	0.5 이상 3 이하	3 을초과 6 이하	6 을초과 30 이하	30 을초과 120 이하	120 을초과 400 이하
	허용 차	±0.1	±0.1	±0.2	±0.3	±0.5
지시외 모서리부분	SURFACE ROUGHNESS (KS B 0617)					
C= R=	다듬질기호	~	▽	▽▽	▽▽▽	▽▽▽▽
	Rmax	100S	25S	6.3S	0.8S	

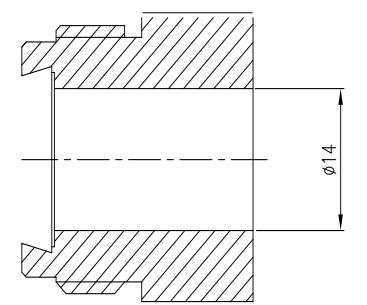
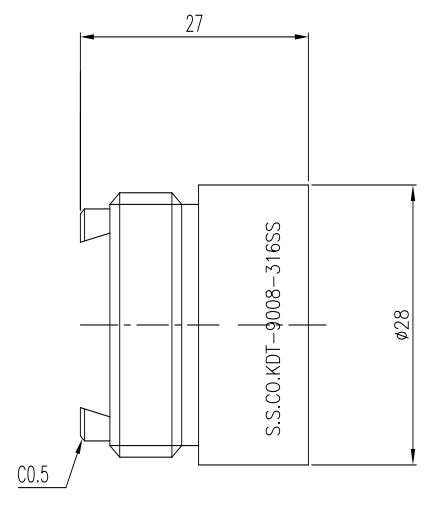
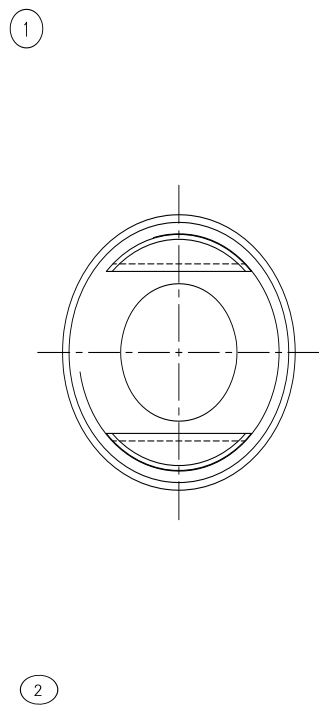
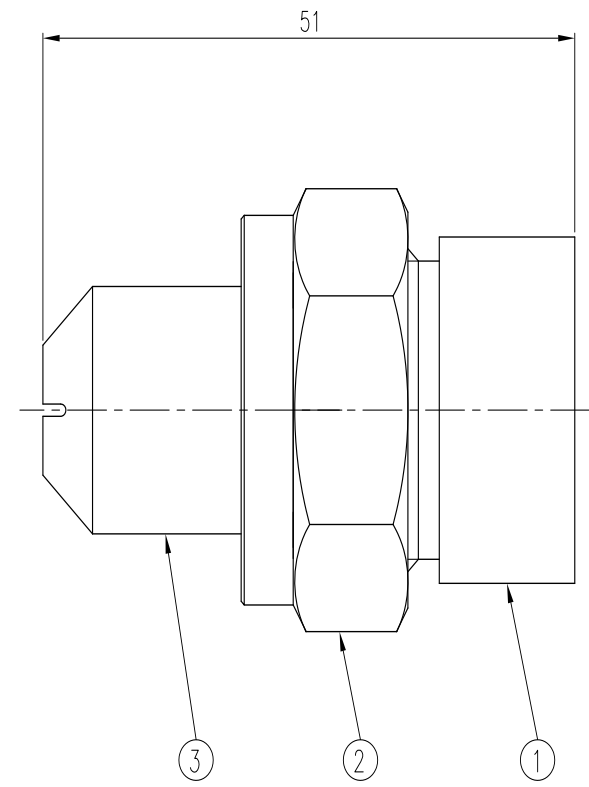
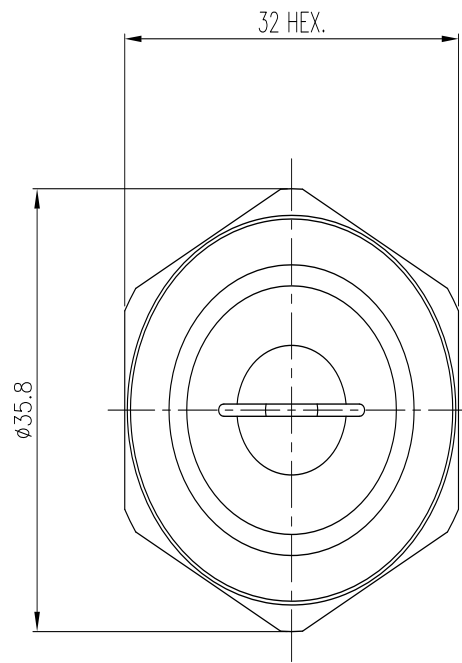
SPECIFICATION

PRESSURE (1.75) (kg/cm ²)	SPRAY ANGLE (±7°)	(XXX)~(XXX)~(XXX)
	(XXX)~(XXX)~(XXX)	
	CAPACITY (ℓ/min ±7%)	

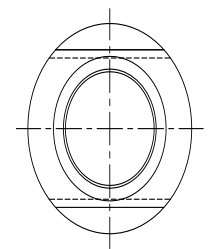
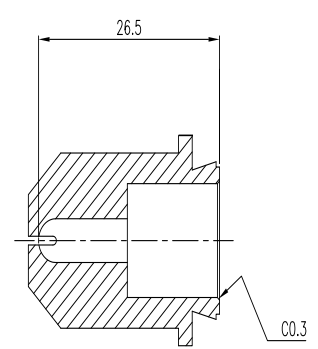
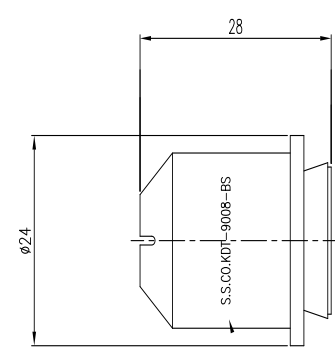
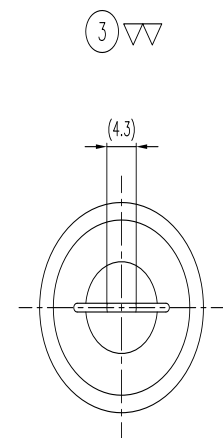
9	GASKET(KGS170187-CO)	COPPER		
8	PLUG(KPG170187-304SS)	SUS304		
7	RETAINER RING(KRT17018-304SS)	SUS304	13	
ITEM	COMPONENT	MATERIAL	Q'TY	REMARKS
DESC.	KCJ170187 CASTERJET	CUSTOMER :		
APP BY.	CH BY.	DES BY.	PRODUCT NAME :	
B.S.KIM	J.M.LEE	J.KIM		
	SCALE :	CREATE DATE :		
	1.7:1	2014.01.15		
THIRD ANGLE	DWG. NO. :			
	56170-187-P6			

Spraying Systems Co., Korea
Experts in Spray Technology

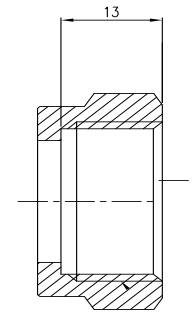
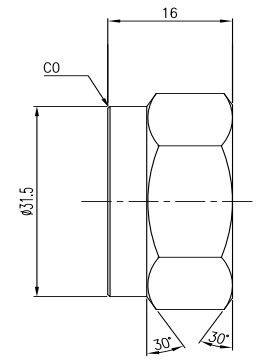
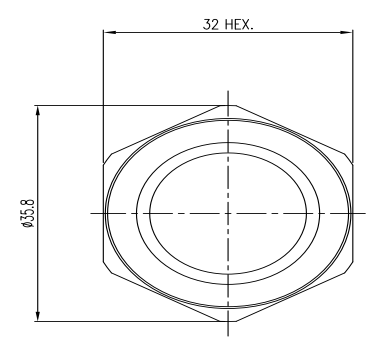
ECO NO.	DATE	REVISION & DESCRIPTION	REVIEWED	CHECKED



NIPPLE (KB0167087-316SS)



TIP(KDTP167087)



HEX-NUT (KPT167067-316SS)

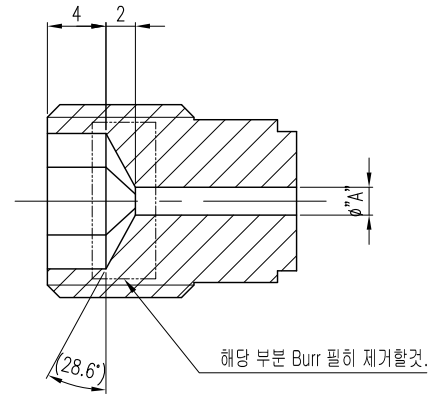
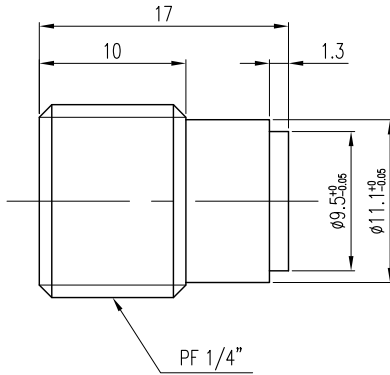
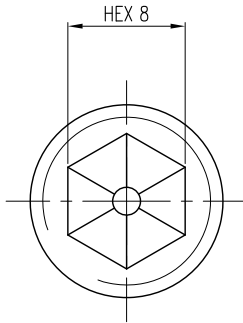
3	TIP(KDTP167087)	BRASS	1	
2	HEX-NUT (KRT167067-316SS)	SUS316	1	56167-105-M1
1	NIPPLE (KB0167087-316SS)	SUS316	1	
ITEM	COMPONENT	MATERIAL	Q'TY	REMARKS

DESC.	KDT167087-BR316 DOVE TAIL		CUSTOMER : -	
APP BY.	CH BY.	DES BY.	PRODUCT NAME : -	
B.S.KIM	J.M.LEE	J.KIM		

	Spraying Systems Co., Korea Experts in Spray Technology		SCALE : 1:1	CREATE DATE : 2014.01.03
			THIRD ANGLE	DWG. NO. : 56167-087-C1

지시외 용접치수		절삭가공치수의 지시외 일반치수 허용차 (KS B ISO2768-1 중급)					SPECIFICATION	
	구분	0.5 이상 3 이하	3 을초과 6 이하	6 을초과 30 이하	30 을초과 120 이하	120 을초과 400 이하	PRESSURE (3.0) (kg/cm ²)	SPRAY ANGLE (±7°) (86)~(93)~(100) (2.9)~(3.1)~(3.3) CAPACITY (ℓ/min ±7%)
	허용차	±0.1	±0.1	±0.2	±0.3	±0.5		
지시외 모서리부분		SURFACE ROUGHNESS (KS B 0617)					PRESSURE (3.0) (kg/cm ²)	SPRAY ANGLE (±7°) (86)~(93)~(100) (2.9)~(3.1)~(3.3) CAPACITY (ℓ/min ±7%)
C=	다듬질기호	~	▽	▽▽	▽▽▽	▽▽▽▽		
R=	Rmax		100S	25S	6.3S	0.8S		

CHECK LIST					ECO NO.	DATE	REVISION & DESCRIPTION	REVWED	CHECKED
LENGTH	ITEM NAME	CONNECTOR	CAPACITY		△				
WIDTH	MARKING	ORIFICE	COMMENT		△				



PART No.	ϕ "A"
KIS170187-15-03	$\phi 1.5$
KIS170187-19-03	$\phi 1.9$
KIS170187-23-03	$\phi 2.3$

Note

- 가공후 가공면에 필히 Burr 제거 하시오.
- 지시없는 R=0.1
- 지시없는 C=0.1
- 나사부위는 전용 게이지로 Check 하시오.
- 항상 일정한 부위에 Marking 하시오.
- Marking 깊이에 유의 하시오.
- Orifice 및 Hole 가공시 진직도에 유의 하시오.
- 제작시 변경사항은 도면 표시후 기술부로 필히 반납 바랍니다.
- VANE 자리 가공시 VANE에 맞추어 억지끼움 하시오.

지시외 용접치수	절삭가공치수의 지시외 일반치수 허용차 (KS B ISO2768-1 중급)					
	구 분	0.5 이상 3 이하	3 초과 6 이하	6 초과 30 이하	30 초과 120 이하	120 초과 400 이하
	허용 차	±0.1	±0.1	±0.2	±0.3	±0.5
지시외 모서리부분	SURFACE ROUGHNESS (KS B 0617)					
C= R=	다듬질기호	~	▽	▽▽	▽▽▽	▽▽▽▽
	Rmax	100S	25S	6.3S	0.8S	

SPECIFICATION	
PRESSURE (XXX) (kg/cm ²)	SPRAY ANGLE (±7°) (XXX)~(XXX)~(XXX)
	(XXX)~(XXX)~(XXX)
	CAPACITY (ℓ/min ±7%)

1	ORIFICE INSERT (KIS170187-__-03)	BRASS	1	
ITEM	COMPONENT	MATERIAL	Q'TY	REMARKS
DESC.	KCJ170187-__ CASTERJET	CUSTOMER : -		
APP BY.	CH BY.	DES BY.	PRODUCT NAME : -	
J.M.LEE	J.H.YOU	J.P.KIM		
		SCALE :	CREATE DATE :	
		2:1	2017.11.24	
Spraying Systems Co., Korea Experts in Spray Technology		THIRD ANGLE	DWG. NO. :	
			56170-187-M1	