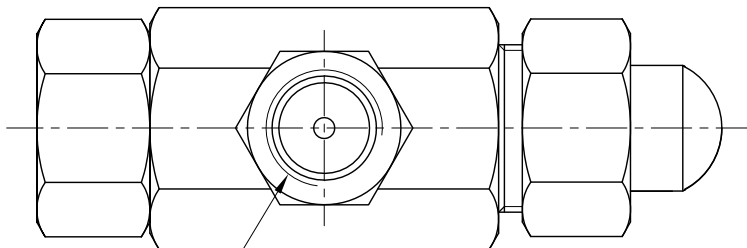
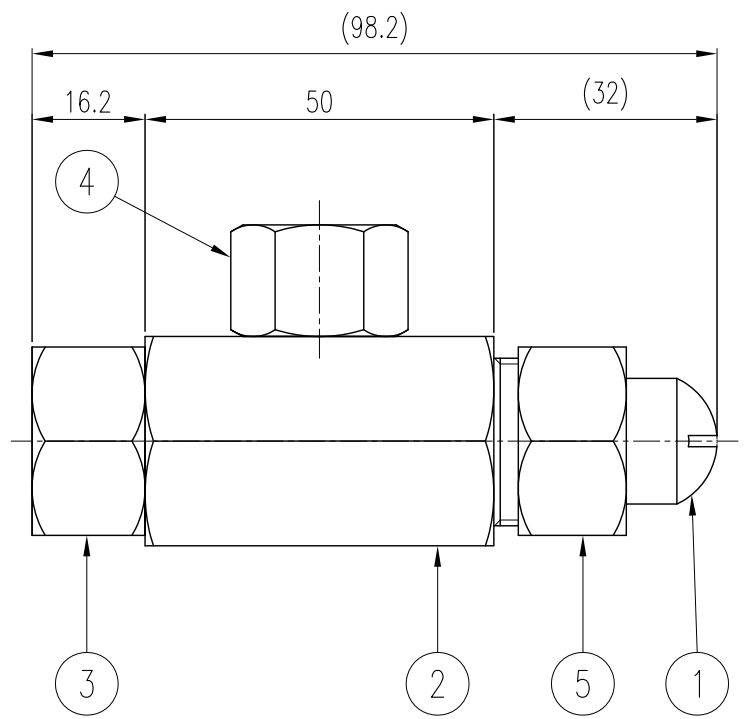
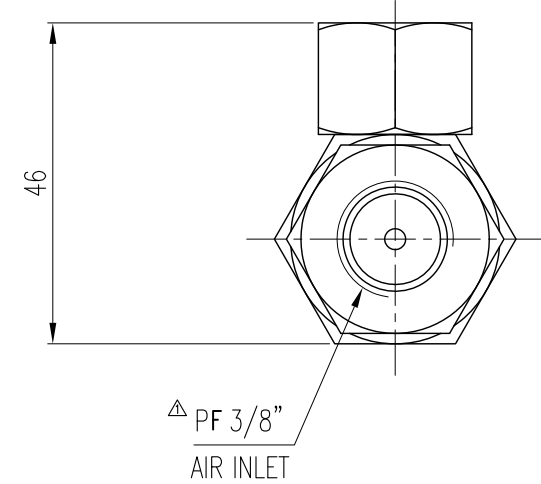
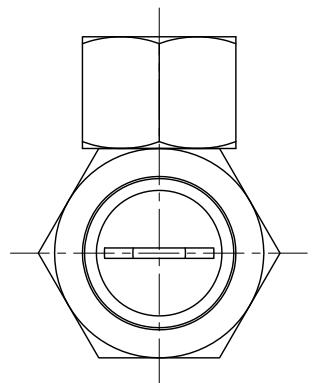
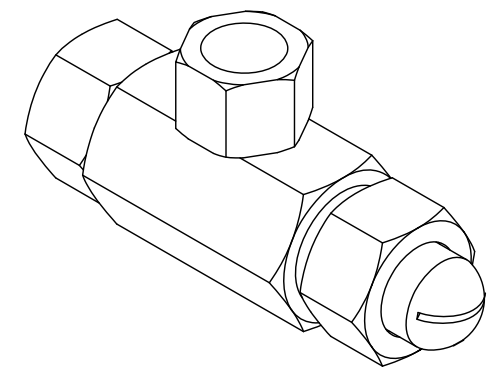


ECO NO.	DATE	REVISION & DESCRIPTION	REVIEWED	CHECKED
△	2018.03.12	PT 3/8" -> PF 3/8"	J.H.YOU	J.M.LEE
△				



△ PF 3/8"
LIQUID INLET



SPECIFICATION						
PART NO (SSCO)	TIP NO.	AIR PRESSURE (Kgf/Cm2)	WATER PRESSURE (Kgf/Cm2)	AIR FLOW RATE (M3/HR)	WATER FLOW RATE (L/MIN)	SPRAY ANGLE (°)
KCJ170241-110-30-30	KCTP170241-110-30-30	2.5	4.5	13.6	13.4	125
			5.4	11.8	15.4	125
			6.0	10.4	16.6	125
KCJ170241-90-20-20	KCTP170241-90-20-20	2.5	4.5	10.6	7.6	100
			5.4	10.3	8.5	100
			6.0	10.2	9.0	100

ITEM	COMPONENT	MATERIAL	Q'TY	REMARKS
5	RETAINER RING	BRASS	1	
4	LIQUID INLET	BRASS	1	
3	AIR INLET	BRASS	1	
2	BODY	BRASS	1	
1	TIP	BRASS	1	

지시외 용접치수 	절삭가공치수의 지시외 일반치수 허용차 (KS B ISO2768-1 중급)						SPECIFICATION	PRESSURE (XXX) (kg/cm ²)	SPRAY ANGLE (±7°) (XXX)~(XXX)~(XXX) (XXX)~(XXX)~(XXX) CAPACITY (ℓ/min ±7%)	DESC. KCJ170241-_-_-_-_-_- CASTER JET	CUSTOMER : -	APP BY. J.M.LEE	CH BY. J.H.YOU	DES BY. S.C.PARK	PRODUCT NAME : -	SCALE : N/S	CREATE DATE : 2017.06.07
	구분	0.5 이상 3 이하	3 을초과 6 이하	6 을초과 30 이하	30 을초과 120 이하	120 을초과 400 이하											
지시외 모서리부분 C= R=	SURFACE ROUGHNESS (KS B 0617)										Export in Spray Technology	THIRD ANGLE 	DWG. NO. : 56170-241-C1				
다듬질기호	~	▽	▽▽	▽▽▽	▽▽▽▽	Rmax	100S	25S	6.3S					0.8S			