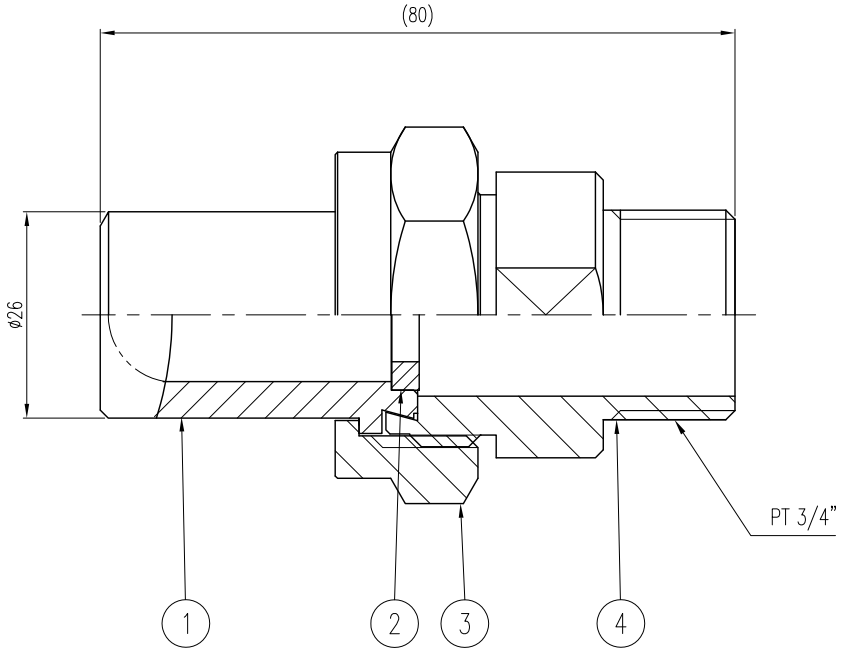
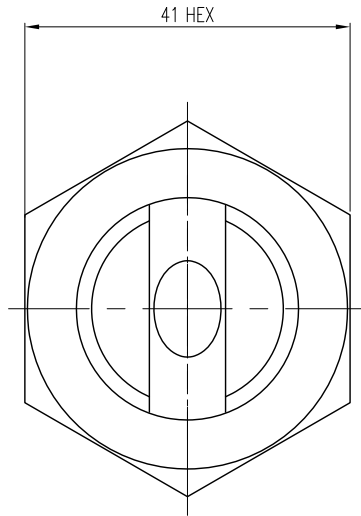


ECO NO.	DATE	REVISION & DESCRIPTION	REVWED	CHECKED



SPECIFICATION						
Part Number	Nozzle Inlet Conn. PT	Capacity Size	Water Pressure (Kg/Cm ²)	Water Flow Rate (L/Min)	Spray Angle	Material
KDT167098-SS 155230E	3/4"	230	10.0	150	155°	SUS303
KDT167098-SS 145230E	3/4"	230	10.0	150	145°	SUS303

4	BODY	SUS303	1	
3	RETAINNER RING	SUS303	1	
2	RING	SUS303	1	
1	TIP	SUS303	1	
ITEM	COMPONENT	MATERIAL	Q'TY	REMARKS
DESC.	KDT167098-SS ___230E SPECIAL DOVETAIL	CUSTOMER :		
APP BY.	CH BY.	DES BY.	PRODUCT NAME :	
J.M.LEE	J.H.YOU	J.H.JUNG		

지시외 용접치수	절삭가공치수의 지시외 일반치수 허용차 (KS B ISO2768-1 중급)						SPECIFICATION	
	구 분	0.5 이상 3 이하	3 을초과 6 이하	6 을초과 30 이하	30 을초과 120 이하	120 을초과 400 이하	PRESSURE	SPRAY ANGLE (±7°)
	허용 차	±0.1	±0.1	±0.2	±0.3	±0.5		(XXX)
지시외 모서리부분	SURFACE ROUGHNESS (KS B 0617)						Rmax	CAPACITY (ℓ/min ±7%)
C= R=	다듬질기호	~	▽	▽▽	▽▽▽	▽▽▽▽		(kg/cm ²)
	Rmax	100S	25S	6.3S	0.8S			

Spraying Systems Co., Korea
 Experts in Spray Technology

SCALE : 1:1
 CREATE DATE : 2017.07.18
 DWG. NO. : 56167-098-C1