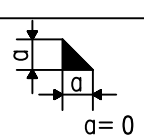
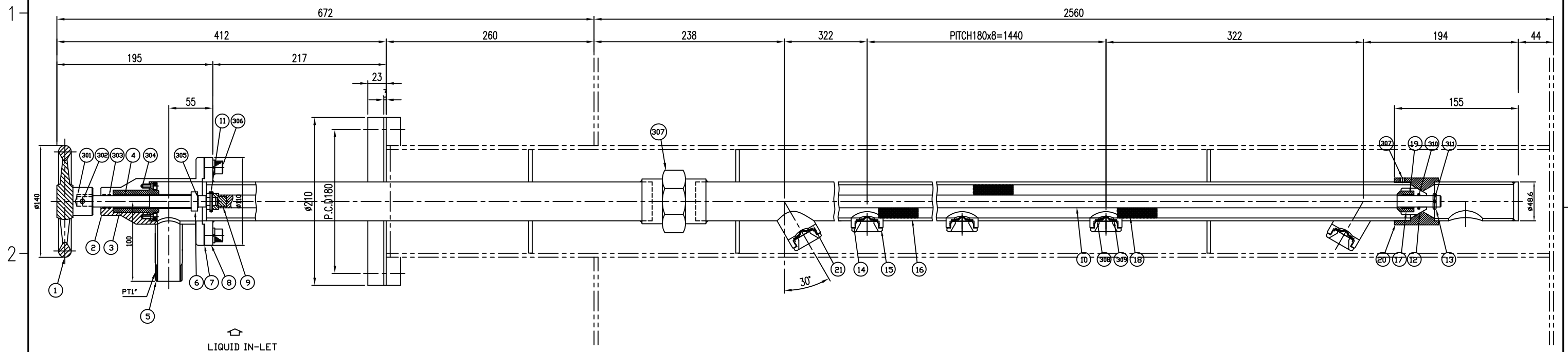



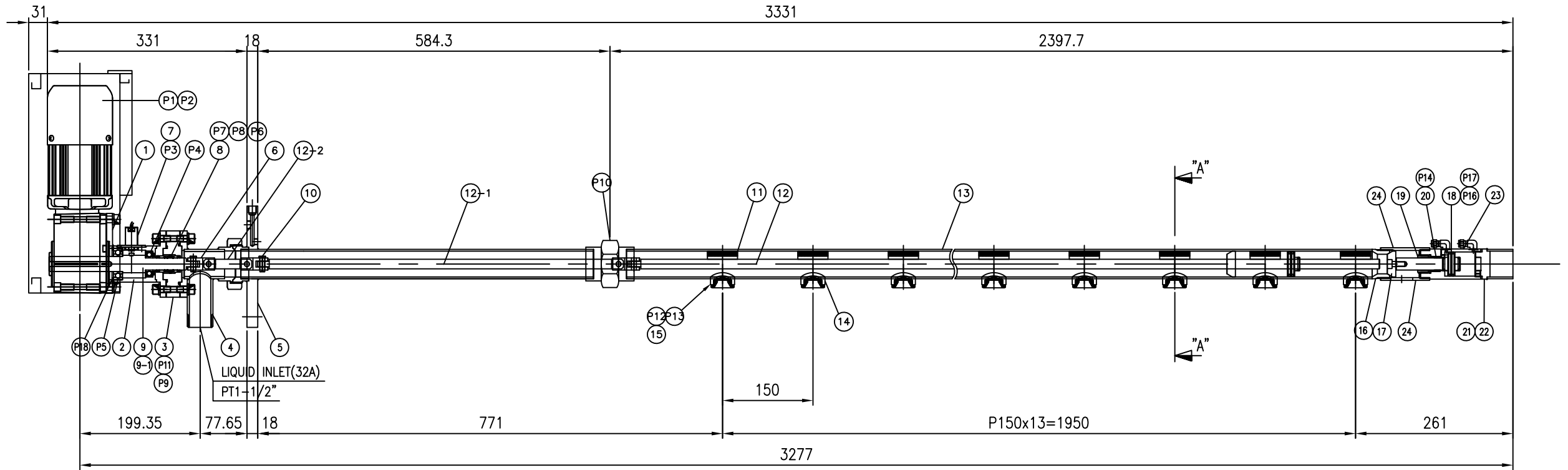
지시외 용접치수  a=0	지시외 모서리부분 지시외일반 모서리제거 C = 0.3~1.2 R = 0.3~1.2	지시외일반 허용치수	절삭가 구분	0.5 ~ 6	6 ~ 30	30 ~ 120	120 ~ 315	315 ~ 1000	1000 ~ 2000	표면 거칠기										NO.	DATE	REVISION & DESCRIPTION		SIGNATURE				
				±0.1	±0.2	±0.3	±0.5	±0.8	±1.2	Ra	25	12.5	6.3	3.2	1.6	0.8	0.2	0.1	REVIEWED					CHECKED				
										Rmax	100S	50S	25S	12.5S	6.3S	3.2S	0.8S	0.4S										
										다듬질	~	▽	▽▽	▽▽▽	▽▽▽▽	▽▽▽▽▽	▽▽▽▽▽▽	▽▽▽▽▽▽▽										



311	SET BOLT (M4x5L)	SUS304	1		16	HEADER	SUS304	1	
310	O-RING (P-14)	NBR	1		15	NOZZLE CAP	SUS304	9	
309	NOZZLE GASKET		11		14	NOZZLE BODY	SUS304	9	
308	NOZZLE (27149-6020-316LSS)	SUS316L	11		13	PIN	SUS304	1	
307	SET BOLT (M8x5L)	SUS304	1		12	VALVE SEAL	TEFLON	1	
306	BOLT (M10x25L)	SUS304	6		11	PIN	SUS304	1	
305	SNAP RING (ø14 SHAFT)	SUS304	1		10	BRUSH SHAFT	SUS304	1	
304	BOLT (M5x10L)	SUS304	4		9	JOINT	SUS304	1	
303	O-RING (P14)	NBR	2		8	FLANGE PIPE	SUS304	1	
302	Set Bolt (M6x10L)	SUS304	2		7	GASKET	TEFLON	1	
301	KEY (5x5)	SUS304	1		6	STOPPER	SUS304	1	
21	NOZZLE BODY	SUS304	2		5	IN-LET PIPE	SUS304	1	
20	VALVE BOS	SUS304	1		4	SCREW	SUS304	1	
19	SPRING	SUS304	1		3	NUT	SUS304	1	
18	BRUSH	SUS316L	9		2	BODY	SUS304	1	
17	BACK-UP RING	SUS304	1		1	HANDLE	SUS304	1	
ITEM	COMPONENT	MATERIAL	Q'TY	REMARKS	ITEM	COMPONENT	MATERIAL	Q'TY	REMARKS

0	0				0	0	0				
NO.	DESCRIPTION	MAT'(KS)	UNIT	TOTAL	PERUNIT	TOTAL	REMARK'S				
			QUANTITY	WEIGHT(kg)							
posco							SCALE	1/5	PROJECTION		
							SIZE	A3	DIMENSION	mm	
TITLE		광양 PLANT	1-1/2" SPRAY SHOWER HEADER				REF. DWG. NO.	EQUIPMENT	0		
		6CGL FACILITY	SCRUBBER UNIT SPRAY NOZZLE ASSEMBLY				MAKER DWG. NO.	56148-054-A1			
POSICO	SIGNATURE	0	DRAWN	CHECKED	REVIEWED	APPROVED	(SUPPLIER)	DRAWN	CHECKED	REVIEWED	APPROVED
	DATE	0						j.s.Ha	j.h.jung		m.s.kim
							POSICO DWG. NO.				

지시외 용접치수 	지시외 모서리부분 지시외일반 모서리제거 C = 0.3~1.2 R = 0.3~1.2	지시외의 일반 치수	절삭가공 부분 치수	구	0.5	6	30	120	315	1000	표면거칠기						NO. DATE REVISION & DESCRIPTION SIGNATURE REVIEWED CHECKED				
				급	±0.1	±0.2	±0.3	±0.5	±0.8	±1.2	Ra	✓	25/	12.5/	6.3/	3.2/		1.6/	0.8/	0.2/	0.1/
				다듬질	~	▽	▽▽	▽▽▽	▽▽▽▽	▽▽▽▽▽	Rmax		100S	50S	25S	12.5S		6.3S	3.2S	0.8S	0.4S



20	BACKUP RING	TEFRON	2	P18	SNAP RING(HOLE) #52	SUS304	1
19	PLUG	SUS304	1	P17	O-RING (P-18)	VITON	2
18	CYLINDER ROD	SUS304	1	P16	O-RING (P-34)	VITON	2
17	VALVE	TEFRON	1	P14	O-RING (P20)	VITON	2
16	VALVE BODY	SUS304	1	P13	NOZZLE GASKET	TEFRON	14
15	NOZZLE CAP	SUS304	14	P12	DISK JET NOZZLE	SUS316	14
14	NOZZLE BASE	SUS304	14	P11	O-RING (G52)	VITON	1
13	HEADER	SUS304	1	P10	UNION(50A)	SUS304	1
12-2	BRUSH SHAFT	SUS304	1	P9	O-RING (G60)	VITON	1
12-1	BRUSH SHAFT	SUS304	1	P8	O-RING (P-24)	VITON	1
12	BRUSH SHAFT	SUS304	1	P7	O-RING (P-20)	VITON	3
11	BRUSH	SUS316	14	P6	LIP SEAL (#20)	TEFRON	2
10	PIN	SUS304	6	P5	BALL BEARING (6205ZZ)	PUR	1
9-1	SENSOR DOG	SUS304	1	P4	BALL BEARING (6004ZZ)	PUR	1
9	SHAFT	SUS304	1	P3	SENSOR	PUR	1
8	SHAFT GUIDE	TEFRON	1	P2	KEY (8X5X104L)	SUS304	1
7	SENSOR BRACKET	SUS304	1	P1	MOTOR (220Wx1/50)	PUR	1
6	JOINT	SUS304	3	25	UNION	SUS304	1
5	FLANGE	SUS304	1	24	VALVE ADATER	SUS304	1
4	IN-LET PIPE	SUS304	1	23	CYLINDER BODY	SUS304	1
3	BODY	SUS304	1	22	CYLINDER CAP	SUS304	1
2	HOUSING	SUS304	1	21	GASKET	TEFRON	1
1	MOTOR PLATE	SUS304	1				
NO.	COMPONENT	MATERIAL	Q'TY	NO.	COMPONENT	MATERIAL	Q'TY

-		SELF CLEANING SPRAY HEADER	SUS304	-	-	-	-	-	-	-	
NO.	DESCRIPTION		MAT'(KS)	UNIT QUANTITY	TOTAL WEIGHT(kg)	PERUNIT	TOTAL	REMARK'S			
posco								SCALE	PROJECTION		
PRE-TREATMENT SELF CLEANING SHOWER HEADER(40A)-AUTO ASSEMBLY								SIZE	A3	DIMENSION	mm
POSICO	TITLE	GWANGYANG PLANT	5CGL FACILITY				REF. DWG. NO.	EQUIPMENT	0		
	SIGNATURE	0	CHECKED	REVIEWED	APPROVED	MAKER DWG. NO.	56148-077-A1				
	DATE	0				POSICO DWG. NO.					