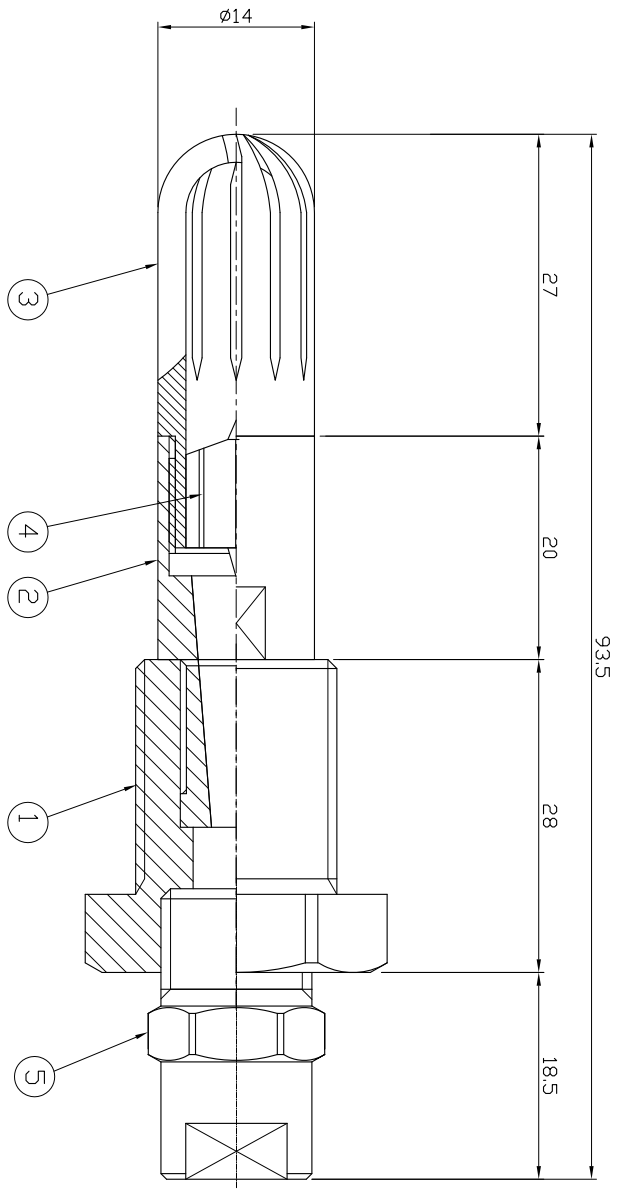


ORDER INFORMATION

KDE - 1556 - 169031

모델타입 사양(빨간숫자참조) 도면번호

NO.	DATE	REVISION & DESCRIPTION	REVISED	CHECKED
△				
△				



NOZZLE SIZE				CAPACITY (l/min (liters per minute))											
SPRAY ANGLE AT 3 bar				20	30	40	50	60	80	100	150	200	250	300	
15°	25°	30°	40°	65°	kg/cm ²	kg/cm ²	kg/cm ²	kg/cm ²	kg/cm ²	kg/cm ²	kg/cm ²	kg/cm ²	kg/cm ²	kg/cm ²	kg/cm ²
1543	2543	3043	4043	6543	3.51	4.30	4.96	5.55	6.08	7.02	7.85	9.61	11.1	12.4	13.6
1549	2549	3049	4049	6549	4.00	4.90	5.66	6.32	6.93	8.00	8.94	10.9	12.6	14.1	15.5
1556	2556	3056	4056	6556	4.57	5.60	6.46	7.22	7.92	9.14	10.2	12.5	14.4	16.2	17.7
1562	2562	3062	4062	6562	5.06	6.20	7.16	8.00	8.77	10.1	11.3	13.8	16.0	17.9	19.6
1568	2568	3068	4068	6568	5.55	6.80	7.85	8.77	9.61	11.1	12.4	15.2	17.5	19.6	21.5
1574	2574	3074	4074	6574	6.04	7.40	8.54	9.55	10.4	12.0	13.5	16.5	19.1	21.4	23.4
1580	2580	3080	4080	6580	6.53	8.00	9.23	10.3	11.3	13.0	14.2	17.8	20.6	23.1	25.3
1587	2587	3087	4087	6587	7.10	8.70	10.0	11.2	12.3	14.2	15.1	19.4	22.5	25.1	27.5
1593	2593	3093	4093	6593	7.59	9.30	10.7	12.0	13.1	15.1	16.1	20.7	24.0	26.8	29.4
1599	2599	3099	4099	6599	8.08	9.90	11.4	12.8	14.0	16.1	18.1	22.1	25.6	28.6	31.3
15111	25111	30111	40111	65111	9.06	11.1	12.8	14.3	15.7	18.1	20.2	24.8	28.7	32.0	35.1
15124	25124	30124	40124	65124	10.1	12.4	14.3	16.0	17.5	20.2	22.6	27.7	32.0	35.8	39.2

지시의 용접치수		SPECIFICATION			
구분	0.5 이상 3 이하	3을초과 6 이하	6을초과 30 이하	30을초과 120 이하	120을초과 400 이하
허용치	±0.1	±0.1	±0.2	±0.3	±0.5
지시의 모서리부분	SURFACE ROUGHNESS (KS B 0617)				
C= R=	다듬질기호 Rmax	▽	▽▽	▽▽▽	▽▽▽▽
		100S	25S	6.3S	0.8S
					(120) PRESSURE (kg/cm ²)
					SPRAY ANGLE(° ±5) (XXX) ~ (XXX) ~ (XXX)
					11.2 ~ 12 ~ 12.8 CAPACITY(L/MIN ±5%)

ITEM	COMPONENT	MATERIAL	Q'TY	REMARKS
5	1/4" NOZZLE	CERAMAX	1	
4	STABILIZER	BRASS	1	
3	STRAINER	BRASS	1	
2	ADAPTER	BRASS	1	
1	TIP ADAPTER	SUS303	1	

DESC. KDE-169031
DESCALEING NOZZLE

DATE : 2016.01.28 DSS BY: Y.M.KO

SCALE : (N/S) PROJECT NAME :

CUSTOMER :

DMG. NO. 56189-031-C1

Spraying Systems Co., Korea