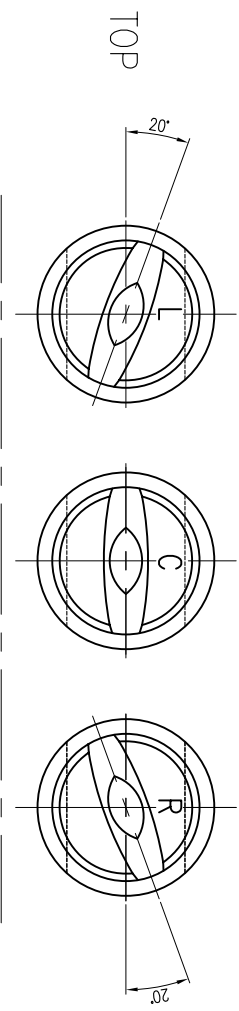


기타의 용해조건	치아역 회전방향	치아역 회전속도	치아역 회전각	치아역 회전위치	치아역 회전방향	치아역 회전속도	치아역 회전각	치아역 회전위치
	치아역 회전방향 C = 0.3~1.2	치아역 회전속도 6 ~ 30	치아역 회전각 40.2	치아역 회전위치 ±1.2				



F4, 5 TOP COOLANT HEADER

PRESSURE(bar)	FLOW-RATE(L/min)	Q.TY	MARKING
18897-SS25164	164.3	13	18897-SS25164 T-L
18897-SS25136	136.3	12	18897-SS25136 T-L
18897-SS2549	49.3	15	18897-SS2549 T-L
18897-SS2541	40.9	12	18897-SS2541 T-L
18897-SS2524	23.5	4	18897-SS2524 T-L
18897-SS2520	19.5	7	18897-SS2520 T-L

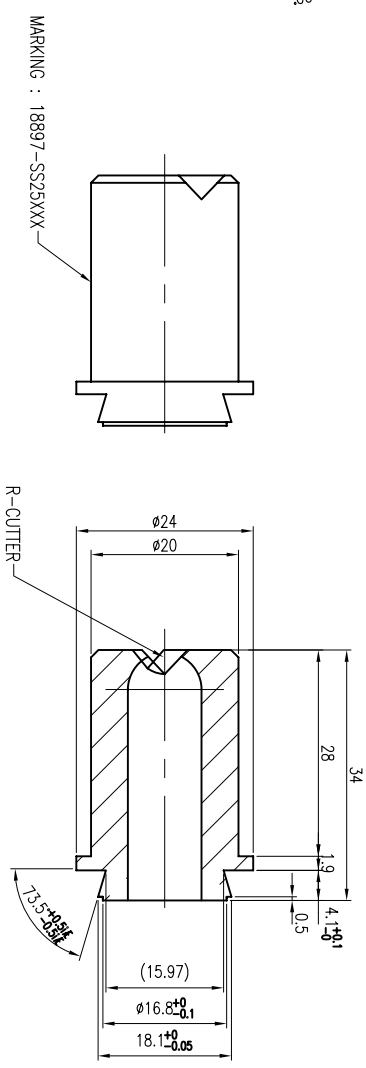
F4, 5 TOP COOLANT HEADER

PRESSURE(bar)	FLOW-RATE(L/min)	Q.TY	MARKING
18897-SS25164	164.3	5	18897-SS25164 T-C
18897-SS25136	136.3	4	18897-SS25136 T-C
18897-SS2549	49.3	5	18897-SS2549 T-C
18897-SS2541	40.9	3	18897-SS2541 T-C
18897-SS2524	23.5	5	18897-SS2524 T-C
18897-SS2520	19.5	5	18897-SS2520 T-C

F4, 5 TOP COOLANT HEADER

PRESSURE(bar)	FLOW-RATE(L/min)	Q.TY	MARKING
18897-SS25164	164.3	13	18897-SS25164 T-R
18897-SS25136	136.3	12	18897-SS25136 T-R
18897-SS2549	49.3	15	18897-SS2549 T-R
18897-SS2541	40.9	12	18897-SS2541 T-R
18897-SS2524	23.5	4	18897-SS2524 T-R
18897-SS2520	19.5	7	18897-SS2520 T-R

B



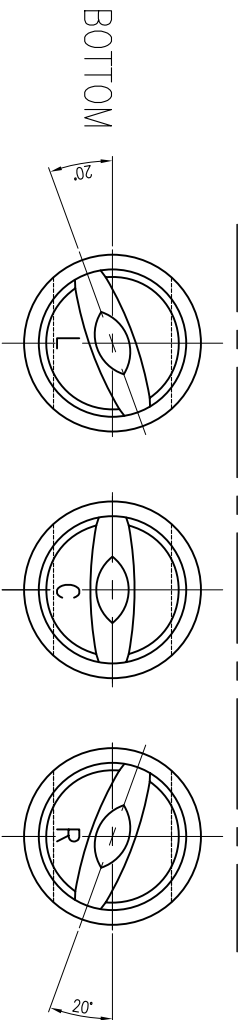
ORDERING INFORMATION

18897 - SS	25	164	-	T	-	R
노출품명	제철	본사	각도	유량	TOP	RIGHT

NO.	DATE	REVISION & DESCRIPTION	SIGNATURE
△			
△			
△			

DESCRIPTION										REMARKS			
NO. 18897-SS25164 T-L													
TITLE: F4, 5 DELIVERY W/R COOLANT HEADER										56499041003			
DRAWN: J.H.JUNG										DATE: 2011.03.24			
CHECKED: Y.Y.LIM										DATE: 2011.03.24			
APPROVED: B.S.KIM										DATE: 2011.03.24			

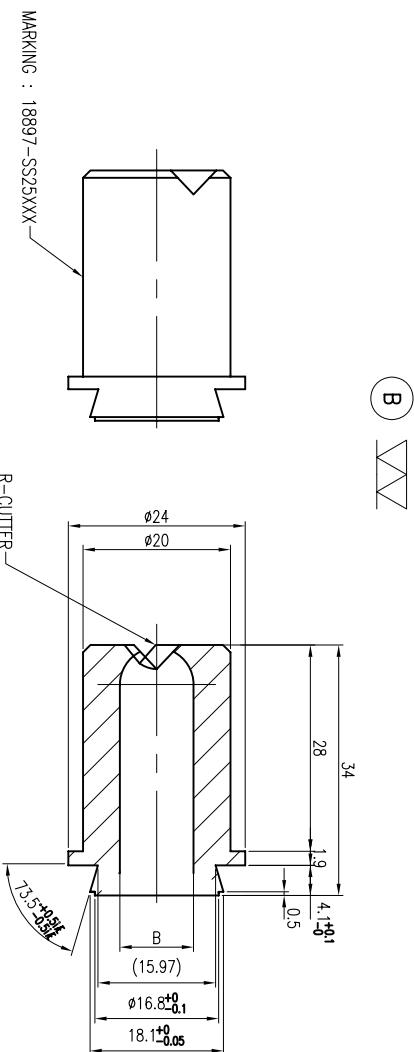
기타의 용량비율	기타의 온도변화	기타의 유속	기타의 유량	기타의 압력	기타의 질량	기타의 부피	기타의 길이	기타의 무게	기타의 면적	기타의 부피	기타의 무게
18897-SS25164	18897-SS25136	18897-SS2549	18897-SS2541	18897-SS2524	18897-SS2520	18897-SS25164	18897-SS25136	18897-SS2549	18897-SS2541	18897-SS2524	18897-SS2520



F4, 5 BOTTOM COOLANT HEADER				
PRESSURE(bar)	FLOW-RATE(L/min)	Q.TY	MARKING	
18897-SS25164	164.3	14	18897-SS25164 B-L	
18897-SS25136	136.3	12	18897-SS25136 B-L	
18897-SS2549	49.3	15	18897-SS2549 B-L	
18897-SS2541	40.9	12	18897-SS2541 B-L	
18897-SS2524	23.5	4	18897-SS2524 B-L	
18897-SS2520	19.5	7	18897-SS2520 B-L	

F4, 5 BOTTOM COOLANT HEADER				
PRESSURE(bar)	FLOW-RATE(L/min)	Q.TY	MARKING	
18897-SS25164	164.3	5	18897-SS25164 B-C	
18897-SS25136	136.3	4	18897-SS25136 B-C	
18897-SS2549	49.3	5	18897-SS2549 B-C	
18897-SS2541	40.9	3	18897-SS2541 B-C	
18897-SS2524	23.5	5	18897-SS2524 B-C	
18897-SS2520	19.5	3	18897-SS2520 B-C	

F4, 5 BOTTOM COOLANT HEADER				
PRESSURE(bar)	FLOW-RATE(L/min)	Q.TY	MARKING	
18897-SS25164	164.3	11	18897-SS25164 B-R	
18897-SS25136	136.3	9	18897-SS25136 B-R	
18897-SS2549	49.3	12	18897-SS2549 B-R	
18897-SS2541	40.9	9	18897-SS2541 B-R	
18897-SS2524	23.5	1	18897-SS2524 B-R	
18897-SS2520	19.5	4	18897-SS2520 B-R	



ORDERING INFORMATION

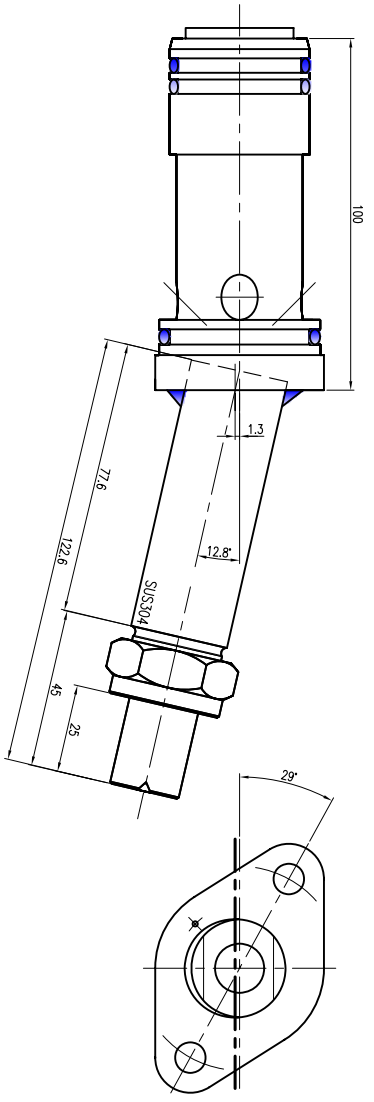
18897	-	SS	25	164	-	B	-	L
		노출품명	재질	분사각도	유량	BOTTOM	LEFT	

DESCRIPTION			MATERIAL(S)		LIMIT QUANTITY		PERMIT WEIGHT(㎏)		REMARK(S)	
NO.										
TITLE			2011년 12월 FM-ZONE COOLING 장치 F4, 5 DELIVERY W/R COOLANT HEADER NOZZLE & BODY & CAP							
USER	DATE	DESIGN	CHECKED	REVISION	APPROVED	DATE	DESIGN	CHECKED	REVISION	APPROVED
0	0	0				2011.03.24	Y.Y.LIM	-		B.S.KIM
SCALE	N/S	PRODUCTION	SIZE	A1	DIMENSION	mm	REF. DWG. NO.	56499041003	0	

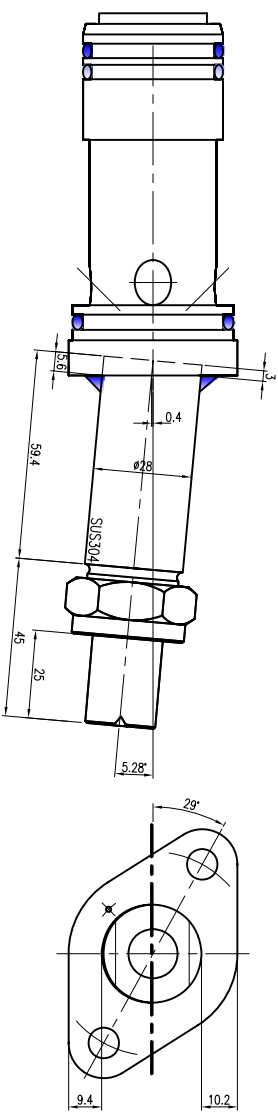
NO.		DATE	REVISION & DESCRIPTION	SIGNATURE
△				
△				
△				

기차의 종류	기차의 수	기차의 명칭	기차의 코드	기차의 번호	기차의 위치	기차의 상태	기차의 사용	기차의 관리	기차의 유지	기차의 폐기
기차의 수	기차의 명칭	기차의 코드	기차의 번호	기차의 위치	기차의 상태	기차의 사용	기차의 관리	기차의 유지	기차의 폐기	
120	315	1000	2000	1000	2000	1000	2000	1000	2000	1000
6	30	120	315	1000	2000	1000	2000	1000	2000	1000
0.5	6	30	120	315	1000	2000	1000	2000	1000	1000
0.5	6	30	120	315	1000	2000	1000	2000	1000	1000
0.5	6	30	120	315	1000	2000	1000	2000	1000	1000
0.5	6	30	120	315	1000	2000	1000	2000	1000	1000
0.5	6	30	120	315	1000	2000	1000	2000	1000	1000
0.5	6	30	120	315	1000	2000	1000	2000	1000	1000
0.5	6	30	120	315	1000	2000	1000	2000	1000	1000

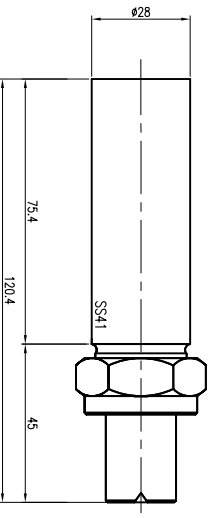
① ▽ (▽ ▽)
F4-TOP-3열 21EA



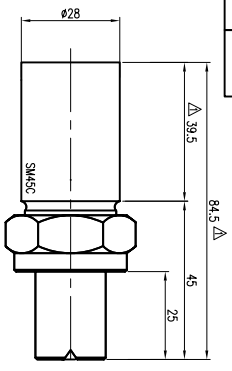
② ▽ (▽ ▽)
F4-TOP-2열 20EA



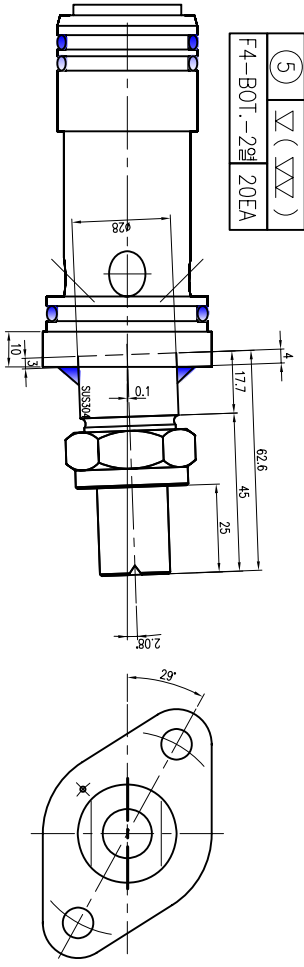
③ ▽ (▽ ▽)
F4-TOP-1열 21EA



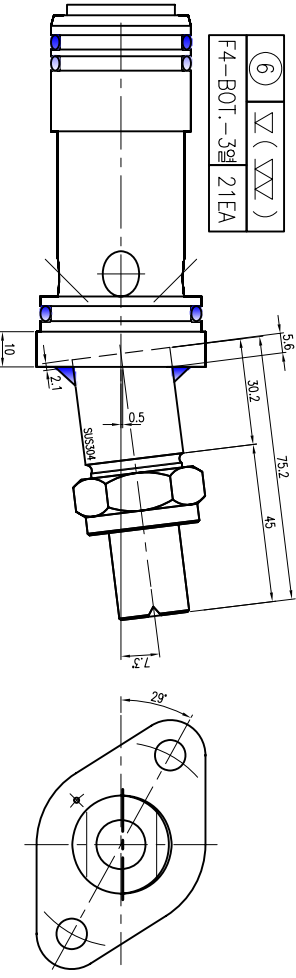
④ ▽ (▽ ▽)
F4-BOT-1열 21EA



⑤ ▽ (▽ ▽)
F4-BOT-2열 20EA



⑥ ▽ (▽ ▽)
F4-BOT-3열 21EA



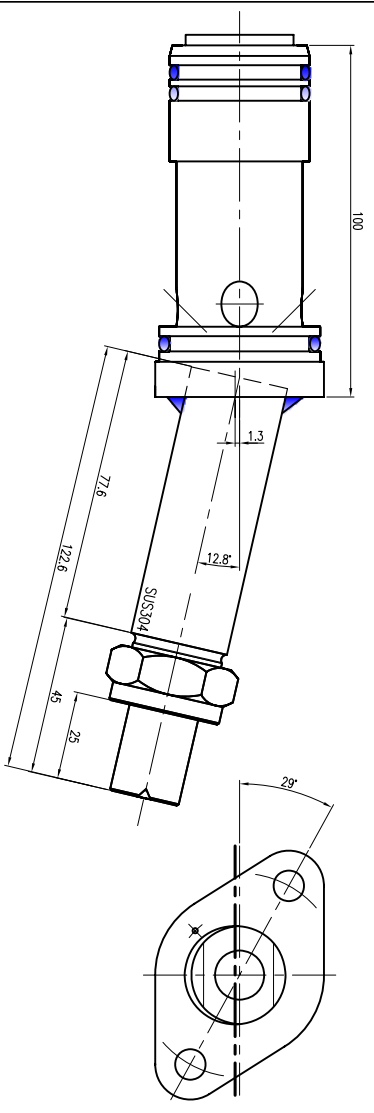
NO.	DESCRIPTION	MAT (KS)	UNIT	TOTAL	REMARKS
1	F4-TOP-3열 CYLINDER ASSEMBLY	SUS304	21		
2	F4-TOP-2열 CYLINDER ASSEMBLY	SUS304	20		
3	F4-TOP-1열 ADAPTOR	SUS304	21		
4	F4-BOTTOM-1열 ADAPTOR	SUS304	21		
5	F4-BOTTOM-2열 CYLINDER ASSEMBLY	SUS304	20		
6	F4-BOTTOM-3열 CYLINDER ASSEMBLY	SUS304	21		

USER	SIGNATURE	DATE	0						
Spraying Systems Co. HIGHMILL PART F4 DELIVERY W/P COOLANT HEAD F4 SELECTIVE CYLINDER & NOZZLE ADAPTOR DRAWN: CEM, CHECKED: FACU, REVISION: 8, APPROVED: S.S. DRAWN: J.H.JUNG, CHECKED: Y.Y.LIM, REVISION: 2011.03.24, APPROVED: B.S.KIM DATE: 0, 2011.03.24, 2011.03.24, 2011.03.24									
REF. DWG. NO.	56499041001	SCALE	N/S	PRODUCTION DIMENSION	0				

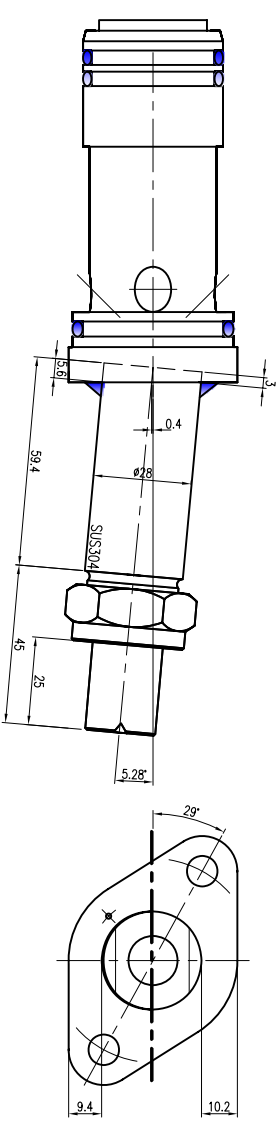
NO.	DATE	REVISION & DESCRIPTION	SIGNATURE
1	12.03.05	Change Dimension	REVISION CHECKED J.H.JUNG B.S.KIM

기밀도	정밀도	표준	재료	단위	수량	비고
기밀도	정밀도	표준	재료	단위	수량	비고
기밀도	정밀도	표준	재료	단위	수량	비고
기밀도	정밀도	표준	재료	단위	수량	비고
기밀도	정밀도	표준	재료	단위	수량	비고

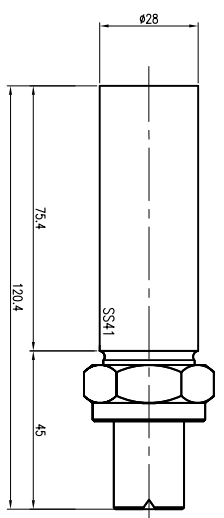
⑦ ∇ (∇∇)
F5-TOP-3열 21EA



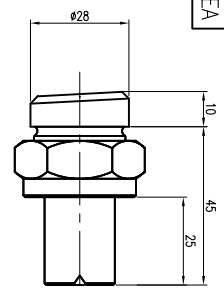
⑧ ∇ (∇∇)
F5-TOP-2열 20EA



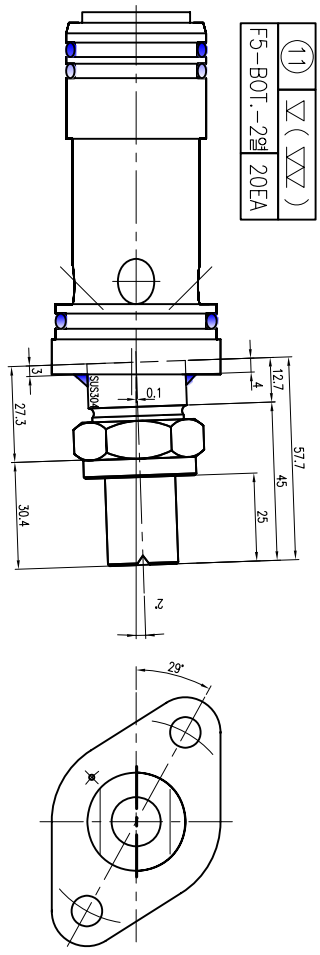
⑨ ∇ (∇∇)
F5-TOP-1열 21EA



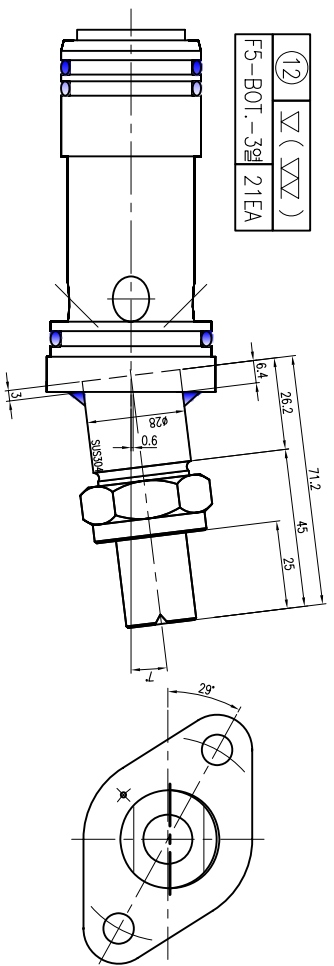
⑩ ∇ (∇∇)
F5-BOT-1열 21EA



⑪ ∇ (∇∇)
F5-BOT-2열 20EA



⑫ ∇ (∇∇)
F5-BOT-3열 21EA



NO.	DESCRIPTION	MAT (S)	UNIT	TOTAL	REMARK'S
12	F5-BOTTOM-3열 CYLINDER ASSEMBLY	SUS304		21	
11	F5-BOTTOM-2열 CYLINDER ASSEMBLY	SUS304		20	
10	F5-BOTTOM-1열 ADAPTOR	SUS304		21	
9	F5-TOP-1열 ADAPTOR	SUS304		21	
8	F5-TOP-2열 CYLINDER ASSEMBLY	SUS304		20	
7	F5-TOP-3열 CYLINDER ASSEMBLY	SUS304		21	

		HIGHMILL PART F5 DELIVERY W/IR COOLANT HEADER SELECTIVE CYLINDER & NOZZLE ADAPTOR		83 J.H.JUNG 2011.03.24		2011.03.24		B.S.KIM 2011.03.24	
USER	SIGN	DATE	0	0	0	0	0	0	0
USER	DWG. NO.	56499041002	0						

NO.	DATE	REVISION & DESCRIPTION	SIGNATURE