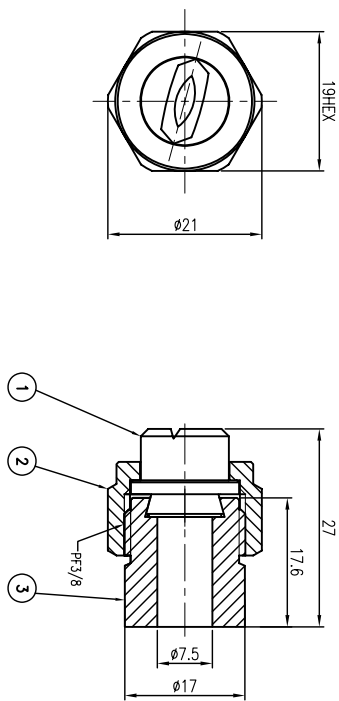


CHECK LIST				ECO NO.	DATE	REVISION & DESCRIPTION	REQUIRED	CHECKED
LENGTH		ITEM NAME		Δ				
WIDTH		MARKING		Δ				
		CONNECTOR						
		DRIFICE						
		CAPACITY						
		COMMENT						



NOZZLE NO.	FLOW RATE(L/min)	SPRAY ANGLE(°)	비고 NO.
1 NOZZLE K18897-6012-316SS	6.33	60	K660.664.17
2 CAP K18897-3/8-CAP-316SS	-	-	K065.200.17
3 ADAPTER K18897-3/8W-316SS-17.6	-	-	K066.011.17

질서의 용접치수

구분	0.5 이상 3 이하	3을초과 6 이하	6을초과 30 이하	30을초과 120 이하	120을초과 400 이하
용치	±0.1	±0.1	±0.2	±0.3	±0.5

질서의 모서리부분

다음질기호	~	▽	▽▽	▽▽▽	▽▽▽▽
Rmax		100S	25S	6.3S	0.8S


질서의 공치수의 질서와 일반치수 허용치 (KS B ISO2768-1 중급)

SPRAY ANGLE (±7°)
(XXX) ~ (XXX) ~ (XXX)

PRESSURE (XXX)
(kg/cm²)
CAPACITY (l/min ±7%)

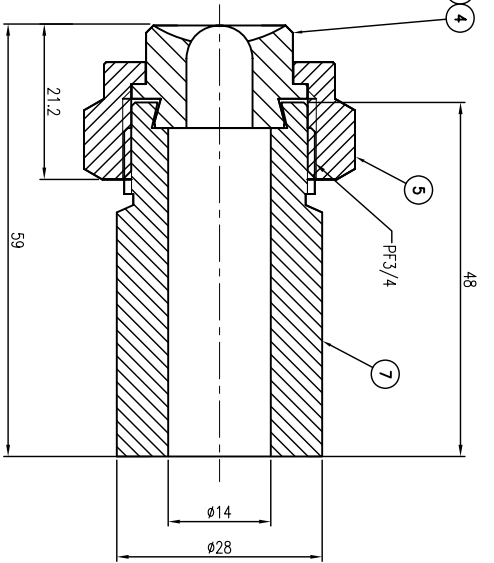
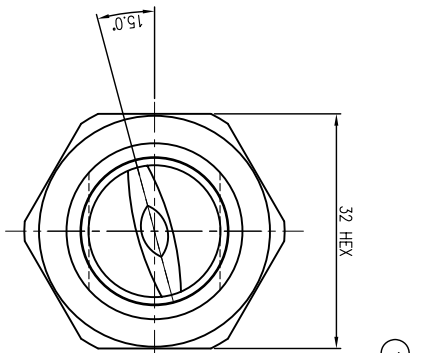
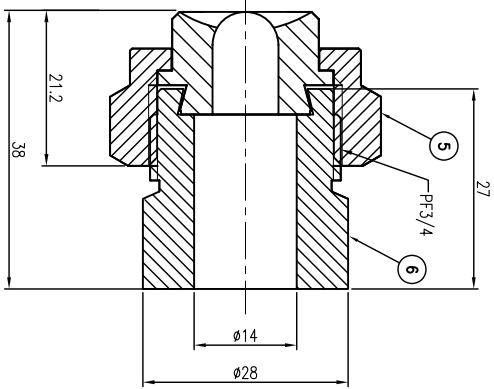
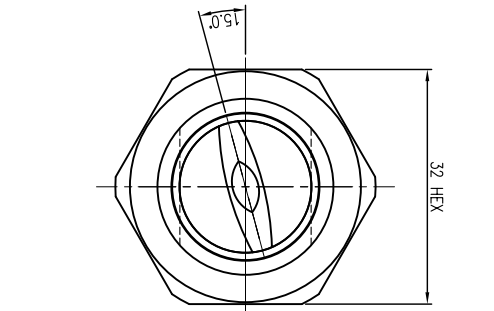
ITEM	COMPONENT	MATERIAL	QTY	REMARKS
1	BODY	SUS316L	1	

DESC. 하이밀부 CEM 공청 연속압연기 & CRANK SHEAR SPRAY NOZZLE 압연기 SPRAY NOZZLE(1/2)


Spraying Systems Co., Korea
 Export in Spray Technology

APP BY: B.S.KIM CH BY: J.M.LEE DES BY: J.H.YOU
 PROJECT No.:
 SCALE: 1:1 CREATE DATE: 2012.09.28
 DWG. NO.: 18897-LE-R002-01
 A4(97x126mm)

CHECK LIST				ECO NO.	DATE	REVISION & DESCRIPTION	REVISED	CHECKED
LENGTH	ITEM NAME	CONNECTOR	CAPACITY	Δ				
WIDTH	MARKING	DRIFICE	COMMENT	Δ				



	NOZZLE NO.	FLOW RATE(L/min)	SPRAY ANGLE(°)	비고 NO.
1	NOZZLE K18897-6080-316SS	55.9	60	K664.964.17
2	NOZZLE K18897-6050-316SS	35.78	60	K664.884.17
3	NOZZLE K18897-60170-316SS	118.8	60	K665.084.17
4	NOZZLE K18897-30120-316SS	49	30	K665.042.17
5	CAP K18897-3/4-CAP-316SS	-	-	K065.600.17
6	ADAPTER K18897-3/4W-316SS-27	-	-	K066.410.17-SHORT
7	ADAPTER K18897-3/4W-316SS-48	-	-	K066.410.17-LONG

자사의 용접치수



A= a=

C= R=

절삭가공치수의 자사와 일반치수 허용차 (KS B ISO2768-1 중급)

구분	0.5 이상 3 이하	3 초과 6 이하	6 초과 30 이하	30 초과 120 이하	120 초과 400 이하
허용차	±0.1	±0.1	±0.2	±0.3	±0.5

SURFACE ROUGHNESS (KS B 0617)

다듬질기호	~	▽	▽▽	▽▽▽	▽▽▽▽
Rmax	100S	25S	6.3S	0.8S	

SPECIFICATION

PRESSURE (XXX)

SPRAY ANGLE (±7°) (XXX) ~ (XXX) ~ (XXX)

CAPACITY (l/min ±7%) (XXXX) ~ (XXXX) ~ (XXXX)

ITEM	BODY COMPONENT	SUS316L	1	REMARKS	
DESC.	하이밀부 OEM 공장 연속밀링기 & CRANK SHEAR SPRAY NOZZLE 밀링기 SPRAY NOZZLE(2/2)			CUSTOMER: POSOC-하이밀	
APP BY:	B.S.KIM	CH BY:	J.M.LEE	DES BY:	J.H.YOU
PROJECT No.:		SCALE:	1:1	CREATE DATE:	2012.09.28



Spraying Systems Co., Korea
Export in Spray Technology

THIRD ANGLE DWG. NO.: 18897-LE-R002-02
DATE: 2012.09.28