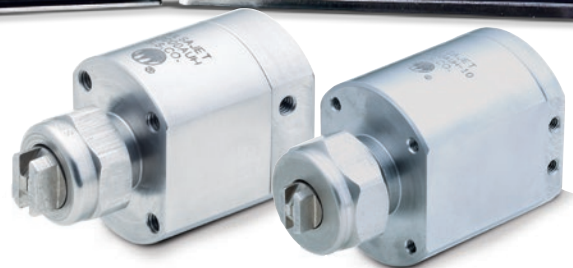


AUTOJET® 1550+ SPRAY CONTROL PANEL

QUICK START GUIDE



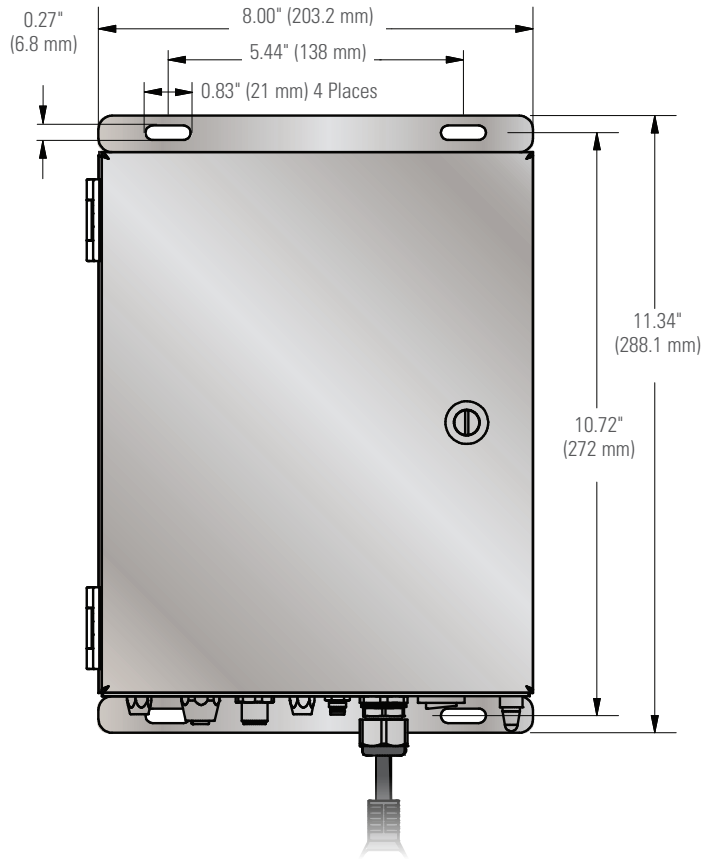
Scan the QR code, or visit spray.com/autojetspraycontrol, to access manuals, videos and additional resources on the AutoJet® 1550+ control panel.

1. POSITION OR MOUNT THE PANEL

Position or mount the panel to a wall in a location that is close to your nozzles.

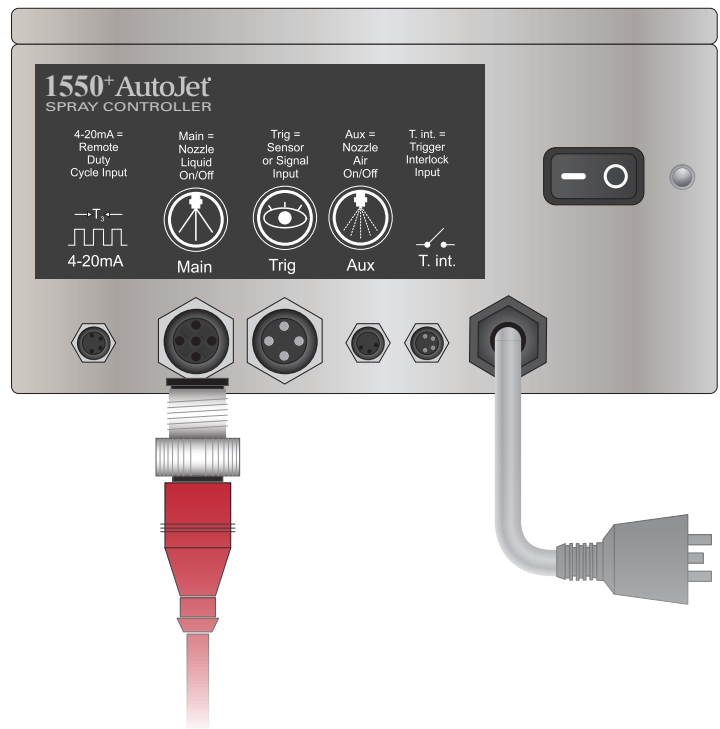
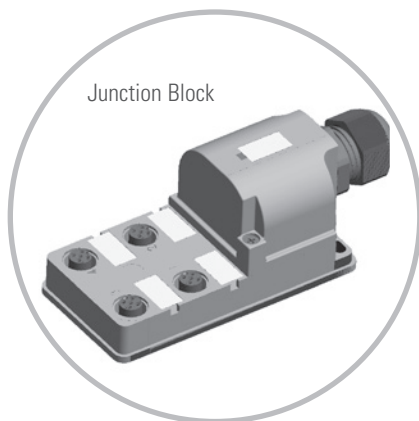
Install wall anchors that are designed to support at least 50 lbs. (90.7 kg) according to the anchor manufacturer's specifications.

The mounting holes are on 5-7/16" (138 mm) centers and are made for 1/4" (6 mm) screws with 3/8" (10 mm) diameter screw heads.



2. CONNECT ELECTRICAL SPRAY NOZZLES

Connect electrical spray nozzle cable to "Main" connection. For multiple nozzles, connect nozzles to a junction block, and then connect the junction block cable to "Main" connection. (Can connect up to 8 nozzles.)



3. CONNECT TRIGGER OR SENSOR

Connect cable to “Trig” connection that will be used to start spray sequence. Available triggers are:

- Trigger cable (for use with customer-supplied trigger signal)
- Sensor (type should be selected based on customer’s application)
 - Photo
 - Prox
 - Laser
 - Thru-beam
- Handheld trigger



4. DUAL TRIGGER FAIL-SAFE (IF APPLICABLE)

For fail-safe operation, or when dual trigger signals will run the system, connect trigger interlock cable to “T. int.” connection.



5. REMOTE DUTY CYCLE (IF APPLICABLE)

If using remote setpoint for Precision Spray Control (PSC), connect input of a 4-20mA analog signal to “4-20mA” connection to adjust the duty cycle remotely.



6. POWER UP THE PANEL

Plug into grounded (115-230 VAC) power source and turn on power. HMI display will illuminate. To set spray parameters and for HMI operation, please refer to section 6 of the owner's manual.

