



# Atomizing Pipe-in-Pipe Shower Specification Sheet

Company: \_\_\_\_\_ Name: \_\_\_\_\_ Address: \_\_\_\_\_  
 Phone: \_\_\_\_\_ Fax: \_\_\_\_\_ Sales office/sales engineer: \_\_\_\_\_

QTY MANIFOLDS REQUIRED: \_\_\_\_\_  
 (INCHES/MM/DEGREES)

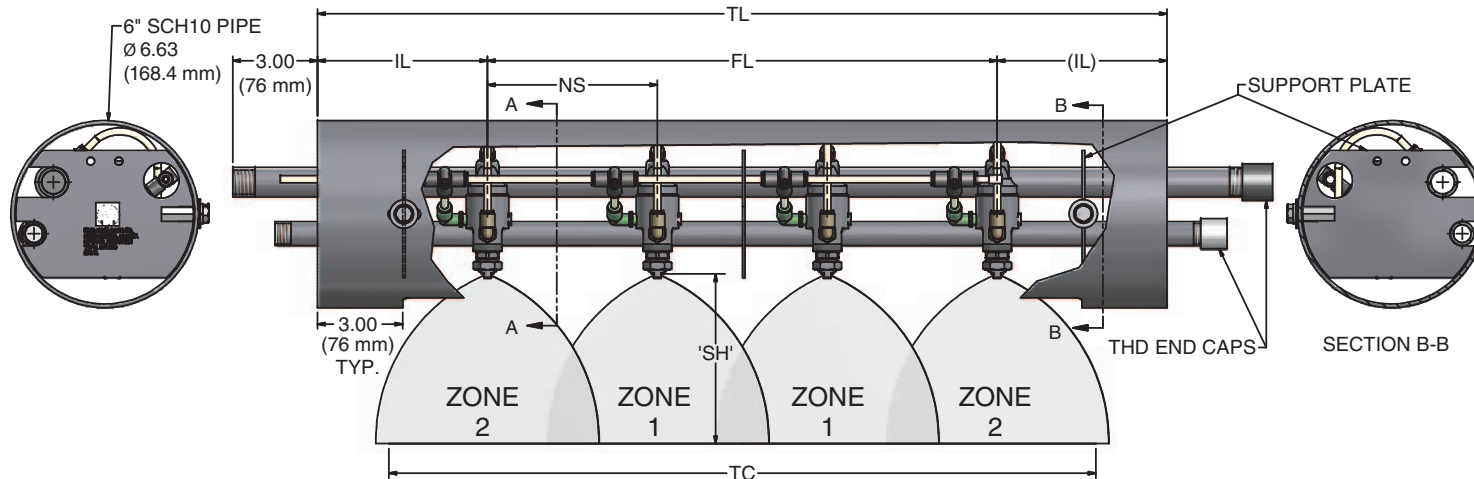
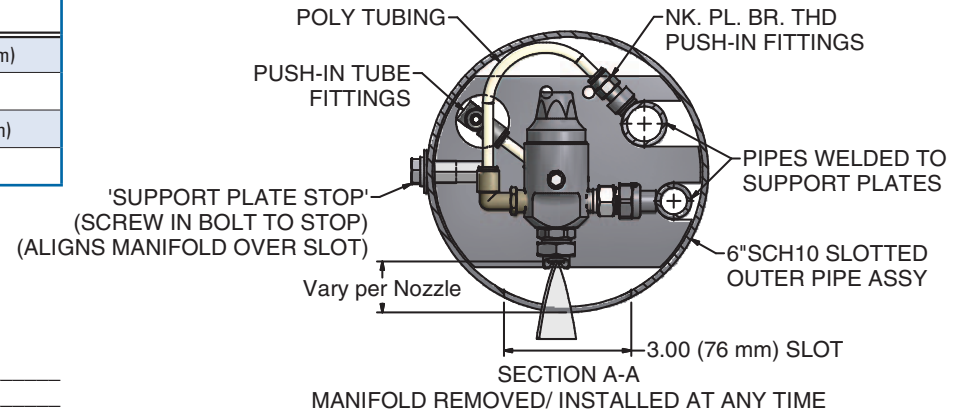
(All inputs required)  
 Complete nozzle part number w/set up: \_\_\_\_\_

Theoretical coverage(TC): \_\_\_\_\_  
 Total length (TL): \_\_\_\_\_  
 Inlet length (IL): \_\_\_\_\_  
 Spray height (SH): \_\_\_\_\_  
 Nozzle spacing (NS): \_\_\_\_\_  
 Qty of nozzles zone 1: \_\_\_\_\_  
 Qty of nozzles zone 2: \_\_\_\_\_  
 Qty of nozzles zone 3: \_\_\_\_\_  
 Total qty of nozzles: \_\_\_\_\_  
 First to last nozzle (FL): \_\_\_\_\_  
 (M) Inlet/outlet (NPT or BSPT): \_\_\_\_\_  
 Max air flow per nozzle (scfm): \_\_\_\_\_  
 Max liquid flow per nozzle (gpm/lpm): \_\_\_\_\_  
 Max air pressure (psi/bar): \_\_\_\_\_  
 Max liquid pressure (psi/bar): \_\_\_\_\_  
 Special comments/requirements: \_\_\_\_\_

**Notes:**

Nozzle types available: 1/4JAU, 1/8JJAU, 1/4JAUH  
 Zones are symmetrical, Zones 2 and 3 require even qty of nozzles (2, 4, 6, etc.)  
 Maximum operating temperature is 200°F (93°C)  
 Maximum operating pressure is 80 psi (5.52 bar) for 1/4JAU and 1/8JJAU nozzles  
 Maximum operating pressure is 140 psi (9.65 bar) for 1/4JAUH nozzles

Defaults	Minimums
Material: 316LSS	IL: 5.25 (133 mm)
IL: 5.25 (133 mm)	
Inlet: (M) NPT	NS: 3.0 (76 mm)
Temp. < 200°F (93°C)	



Download this form at [www.spray.com/specsheets](http://www.spray.com/specsheets)