

SPRAYCHECK® ROTATION MONITOR SYSTEM

DIRECT MONITORING OF UP TO
THREE TANK CLEANERS



Spraying Systems Co.®

MONITOR YOUR TANK CLEANING EFFICIENCY IN REAL-TIME



ROTATION
MONITOR



PRESSURE &
TEMPERATURE
SENSORS



ROTATION
MONITOR
LANCE



ROTATION
SENSOR



RM-ENABLED
CLOUD-SELLERS® 360
TANK CLEANER



ROTATION MONITOR
DASHBOARD



WHEN EQUIPMENT ISN'T PERFORMING TO STANDARDS, THE IMPACT CAN BE SIGNIFICANT AND PUT AN ENTIRE OPERATION IN JEOPARDY.

The SprayCheck® Rotation Monitor (RM) system lets you watch your tank cleaning cycles in real time, giving you confidence that you're cleaning efficiently while saving time and resources.

Listening for tank wall impact or looking through a sight portal is ineffective. Pulling a lance and spray ball is inefficient and resource-intensive, especially at night when manpower and visibility are limited.

Our patented system tracks your tank cleaner's revolutions, pressure, and temperature in real-time. Unlike monitoring systems that utilize a pressure sensor mounted on the tank wall or ceiling to record one impact per cycle, SprayCheck sensors are located on the lance and fluid supply line to collect direct, continual data, ensuring that your tank cleaner is operating properly throughout the cleaning cycle.

Our digital alarms and performance reporting allow for remote monitoring at any hour, wherever you are in your facility.

Contact your local spray specialist to discuss your application details and determine how the SprayCheck® Rotation Monitor System can integrate with your current tank cleaning process.

1.800.95.SPRAY or spray.com.

IDEAL FOR USE WITH A WIDE RANGE OF TANK CLEANING OPERATIONS

- Brewery and winery tanks
- Petrochemical/chemical processing reactors
- Ethanol production
- Truck wash
- Marine
- Pulp storage chests

COMPONENTS

ROTATION MONITOR

This communication hub is designed for up to three tank systems

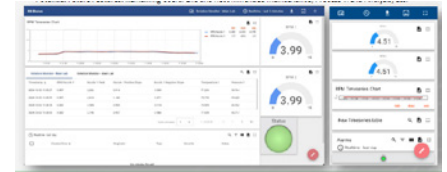
- Monitor hub uses sensor signals to track performance and communicate with the plant network and remote monitoring
- Upload data to the cloud or your control room dashboard
- Waterproof monitor box with flexible mounting and connections for all system cables



ROTATION MONITOR DASHBOARD

View your progress with SprayCheck application screen

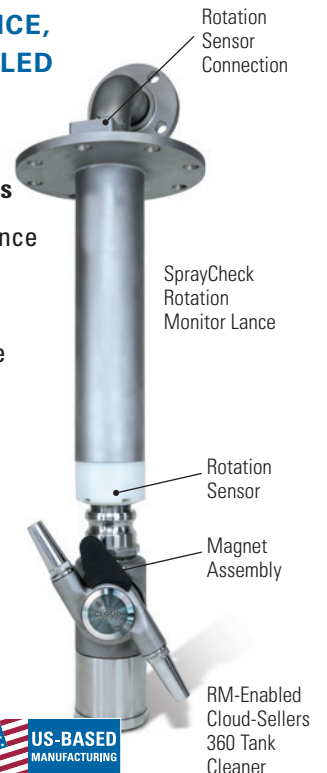
- Remote monitoring for tracking and analyzing performance
- Store data history
- Configurable dashboard alerts



ROTATION MONITOR LANCE, SENSORS AND RM ENABLED TANK CLEANER

Made for acid and corrosive cleaning and rinsing applications

- Configurable sensor-enabled lance for typical tank entry flanges
- Robust electrical connection, internal cabling protected in the shield tube
- Temperature and pressure sensors are located on the fluid supply line and connect to the Rotation Monitor
- Compatible with with the RM-enabled Cloud-Sellers® 360 fluid driven tank cleaner



A CLOSER LOOK AT THE SPRAYCHECK® ROTATION MONITOR SYSTEM TECHNOLOGY

ROTATION MONITOR AND REMOTE DASHBOARD

Inputs – user configurable

- Monitor power supply: 110VAC, 60 Hz, 1 PH, 1A max., NEMA 5-15P
- System sensors: validation lance(s), pressure sensor (300 psi typ.) and temperature sensors (300°F/149°C typ.)

Outputs

- On-device status light
- Discrete Outputs: analog RPM, digital alarm
- Industrial communication: Modbus RTU (RS-485, 2-wire) or Ethernet/IP
- Remote monitoring: (Cellular LTE) via spray monitoring dashboard

Ratings and Specifications:

- Temperature: -40°F to 140°F (-40°C to 60°C)
- Waterproof enclosure and status light, NEMA 4X/IP67 enclosure, polycarbonate, flexible mounting feet
- Bulkhead, IP67, materials: Stainless steel/EPDM/nickel-plated brass. All connections terminated or capped
- System Cables: M12 industrial cables, configurable lengths, PUR insulation

Remote Monitoring Dashboard

- Data connection: secure cellular LTE
- Spray Monitoring Dashboard: Configurable user rights and notifications
- Current features: Historical data visibility and performance insights
- Potential future features: remaining useful life and recommended maintenance, process trend analysis, etc.

ROTATION MONITOR LANCE

Ratings and Specifications

- Temperature: 32°F to 200°F (0°C to 94°C)
- Waterproof enclosure and connector
- Configurable, welded lance with 2" schedule 40 pipe and sensor shield tube (4" OD)
- Sensor housing located at tank cleaner connection
- Tank flange: ASME plate flange to fit 6" and 8" 150# flanges
- Process connection: 2" NPT, ASME 2" Fixed and loose flanges, and others available
- In-Tank Materials: 316 stainless steel, silicone seals, cast nylon
- External materials: Black anodized aluminum housing, nickel-plated brass connection

RV-ENABLED CLOUD-SELLERS® 360 TANK CLEANER

Specifications

- Materials: 316 stainless steel, nylon-type housing, FDA listed potting material, high temperature magnet
- Rotation Validation nozzles include rotation-indicating nozzle hub for positive rotation detection

Call 1.800.95.SPRAY to speak with your local spray specialist or visit spray.com for more information.



Spraying Systems Co.®

Experts in Spray Technology

North Avenue and Schmale Road, P.O. Box 7900, Wheaton, IL 60187-7901 USA

Tel: 1.800.95.SPRAY Intl. Tel: 1.630.665.5000 www.spray.com

Bulletin No. 826 ©Spraying Systems Co. 2026

