

SPRAY MANIFOLDS

FOOD PRODUCT COATING
MOISTENING • TABLET COATING
SPRAYING VISCOUS LIQUIDS
LUBRICATION • WAX COATING



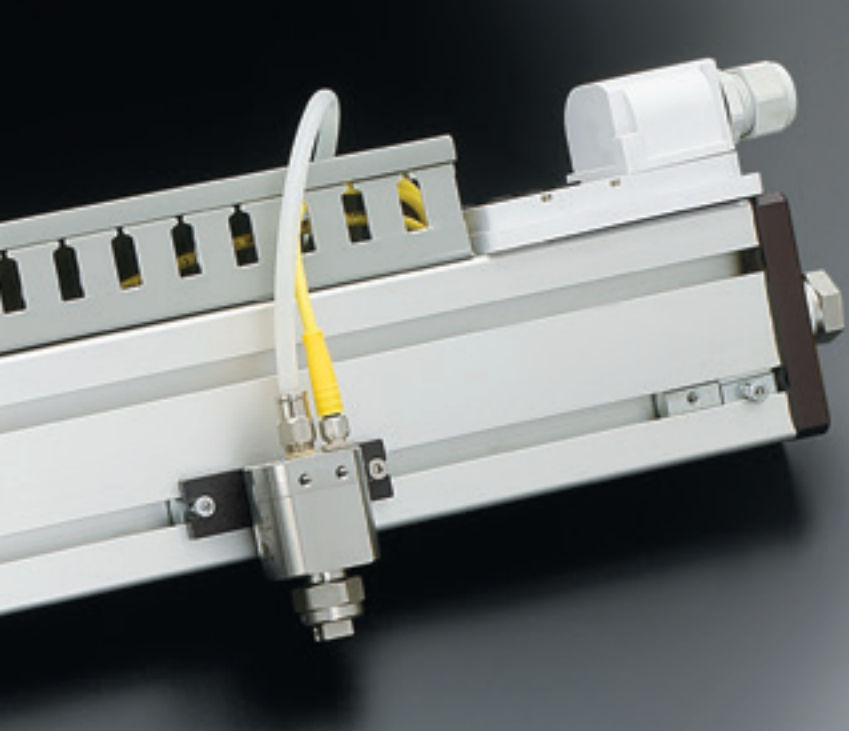
SPRAY MANIFOLDS INTRODUCTION



SIMPLE INSTALLATION & PEAK SPRAY PERFORMANCE

Proper positioning and mounting are critical to ensure optimum spray performance of your spray nozzles. Standard spray manifolds are available in a variety of configurations to meet your exact requirements. Save time and eliminate integration problems using our single source solutions.





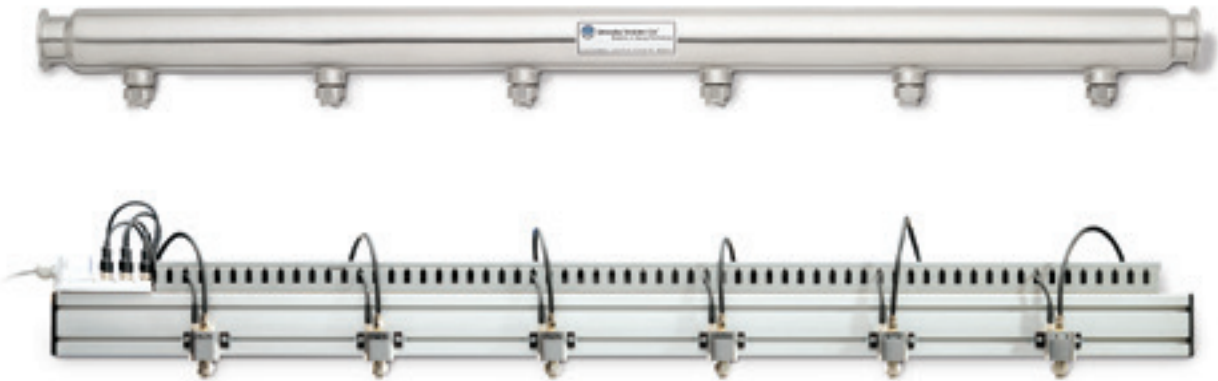
SPRAY MANIFOLDS TABLE OF CONTENTS

	PAGE
Quick Reference Guide	F4
53500 Modular Air Atomizing Spray Manifold	F5
54000 Modular Air Atomizing Spray Manifold	F5
54500 Modular Air Atomizing Spray Manifold	F5
63600 Sanitary Spray Manifold	F5
98250 Spray Manifold	F6



OVERVIEW: SPRAY MANIFOLDS

- Spray manifolds are available for a wide variety of spray applications
- Threaded or sanitary inlet connections
- Hydraulic or atomizing nozzles can be used
- Nozzle spacing as narrow as 2" (51 mm)
- Manifold lengths up to 20' (6 m)
- A variety of materials of construction
- Heated manifolds available



QUICK REFERENCE GUIDE

Product	Connection Type	Nozzle Spacing	Max Manifold Length	Materials of Construction	Hydraulic or Air Atomizing	Spray Nozzle Series
53500 Modular Manifold	Threaded	Min – 2" (51 mm) Max – 9" (229 mm)	11' (3.4 m)	316 stainless, polypropylene	Air Atomizing	JAU, VMAU
54000 Modular Manifold	Threaded or sanitary flange	Min – 2" (51 mm) Max – 9" (229 mm)	5' (1.5 m)	316L, PTFE	Air Atomizing	JAU, VMAU
54500 Modular Manifold	Sanitary Flange	6" or 9" (152 mm or 229 mm)	5' (1.5 m)	Stainless steel	Air Atomizing	VMAU
63600 Sanitary Manifold	Sanitary Flange	Min 2" (51 mm) with J, JAU Min 3" (76 mm) with PulsaJet, VMAU	–	Sanitary 316L tubing	Both Available	J, JAU, VMAU, PulsaJet®, JAUCO, JAUMCO
98250 Manifold	Threaded	Adjustable	20' (6.1 m)	Aluminum	Both Available	PulsaJet

SPRAY MANIFOLD OPTIONS

53500, 54000, 54500 Modular Air Atomizing Manifolds

- Lightweight design for fast, easy set-up and maintenance
- Streamlines tubing and fittings; simplifies cleaning
- Easy disassembly and reassembly to minimize downtime
- Designs available for industrial, food processing and pharmaceutical applications
- 54500 manifold is heated for use with viscous liquids



63600 Sanitary Manifolds

- Lightweight for easy installation and removal
- Sanitary 316L tubing with polished outside surfaces
- Large diameter liquid passages with minimal pressure drop to help ensure consistent flow
- Available for hydraulic or air atomizing nozzles
- Optional hot water jacket to improve flow of viscous coatings



PLACING YOUR ORDER

Call 1.800.95.SPRAY for applications assistance or to place an order.

SPRAY MANIFOLD OPTIONS

98250 Manifold

- Compact design with rigid aluminum structure also functions as fluid passage
- Can be configured with flexible lengths, number of nozzles and nozzle spacing
- Dual inlet ports can be used for liquid recirculation
- Standard wetted components constructed of aluminum, rubber, Buna, nickel-plated brass and nylon tubing

**PLACING YOUR ORDER**

Call 1.800.95.SPRAY for applications assistance
or to place an order.

