



**Spraying Systems Co.**  
Experts in Spray Technology

## CAN WASH RISER - AU

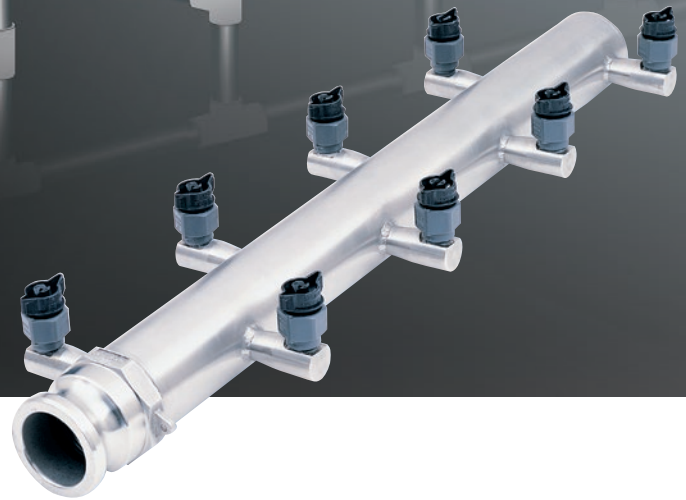
### LIGHTWEIGHT CAN WASHING RISER EFFECTIVELY CLEANS CANS – EVEN IN HARD TO REACH AREAS

Nozzle spacing in our Can Wash Riser is optimized for use in washers so that every area of even the hardest-to-clean can is effectively washed and rinsed. Narrow spray angles and optimal nozzle spacing allow effective penetration of the conveyor mat without knocking over the cans.

#### BENEFITS

- Risers are specially designed to can dimensions
- Greatly improves efficiency in every stage of the washer
- Improves spray penetration into hard to reach can sections
- Enables a better coating process especially when used in conjunction with our beverage can coating nozzle.
- Reduces installation and maintenance time with “winged” no-slip grip spray tips that require no tools for installation or removal
- Longer lasting nozzles for reduced maintenance time and costs
- Reduces waste from knocked over cans

For information on can coating nozzles and spray technology for the beverage industry see bulletins [559](#) and [604](#).



#### SPECIFICATIONS

Lightweight construction – 6' risers under 13.5 lbs. (6 kg), 8' riser under 18 lbs. (8 kg)
One-piece welded 316 stainless steel riser construction, passivated prior to assembly
Standard 1-1/2" and small bore 1" risers
A wide range of spray patterns for effective cleaning inside specific can sizes
Individual nozzle sizing for efficient use of chemical and water, while maintaining a balanced system
Spray pressure selections for even coverage while maintaining can stability throughout the washer
Flow rates and pressures can be specified to give water, chemical and energy reductions throughout the washer
Constructed with ProMax® QuickJet® nozzles for fast and easy maintenance and chemical resistance in acid and alkali systems
Custom designed features to meet your exact washing needs

## ProMax® QuickJet® Nozzle Technology

### CHEMICAL RESISTANT

All can washing risers employ the QuickJet nozzles constructed of ProMax material, a special grade of polypropylene that offers excellent chemical resistance and durability. ProMax also offers a degree of resistance to the usual caking problems associated with the chemical stages of the washer.

### QUICK AND EASY MAINTENANCE

No tools are needed for installation and removal of ProMax QuickJet nozzles. With a simple quarter turn, tip installation and removal can be done by hand, in seconds. The winged “no slip grip” design of ProMax QuickJet nozzles also means that these changes can be accomplished quickly and easily, even with gloved hands. Tip installation is effortless with a “snap-in” feel due to a pawl located on the spray tip. Plus a built-in internal stop ensures that the spray tip always locks into the correct position.

A standard Viton® O-ring seal is incorporated onto the tip, so accidental loss and misplacement is prevented. Since the seal remains attached to the tip, it is also replaced every time when tips are replaced.

\*Viton is a registered trademark of E.I. DuPont de Nemours and Company



### A WIDE VARIETY OF SPRAY TIPS CONVENIENTLY COLOR CODED

ProMax QuickJet nozzles accept a variety of capacity sizes and spray angles for flat spray full cone and hollow cone patterns.

For your convenience each tip type comes in a specific color for instant recognition and fast, accurate nozzle replacement.



**Spraying Systems Co.®**  
Experts in Spray Technology

North Avenue and Schmale Road, P.O. Box 7900, Wheaton, IL 60187-7901 USA

Tel: 1.800.95.SPRAY    Intl. Tel: 1.630.665.5000

Fax: 1.888.95.SPRAY    Intl. Fax: 1.630.260.0842

www.spray.com

