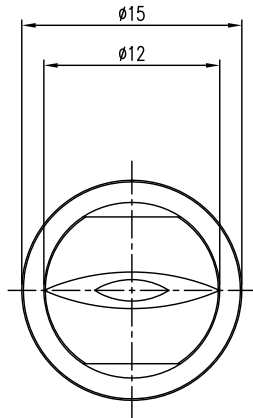
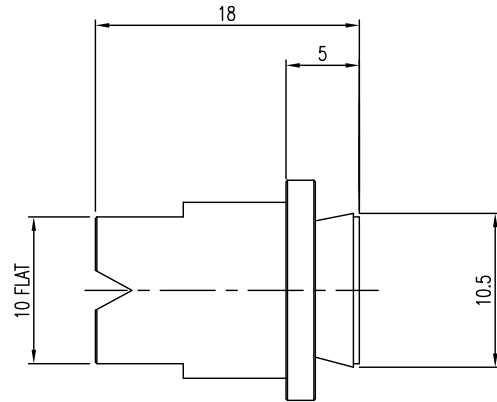
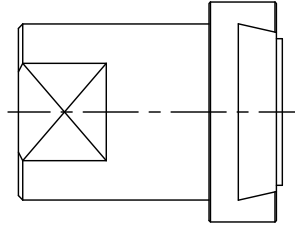


CHECK LIST					ECO NO.	DATE	REVISION & DESCRIPTION	REVISED	CHECKED
LENGTH	ITEM NAME	CONNECTOR	CAPACITY	Δ					
WIDTH	MARKING	ORIFICE	COMMENT	Δ					



기 존 사 랑	NOZZLE TYPE NO.	CAPACITY(L/min)		SPRAY ANGLE ( ° )	
		3.0 (Kg/cm <sup>2</sup> )		3.0 (Kg/cm <sup>2</sup> )	
1020	2026	10	20		
1030	3026	10	30		
1040	4026	10	40		
1840	4046	18	40		
2040	4050	20	40		
2060	6050	20	60		
1365	6533	13	65		
1565	6538	15	65		
2065	6550	20	65		
1065	6526	10	65		

1	NOZZLE	SUS303	1	
ITEM	COMPONENT	MATERIAL	Q'TY	REMARKS
DESC.	KDTP167101-SS DOVE TAIL	CUSTOMER :		
APP BY.	CH BY.	DES BY.	PRODUCT NAME :	
J.M.LEE	J.H.YOU	Y.M.KO		
SCALE :		CREATE DATE :		
#####		2017.07.28		
THIRD ANGLE		DWG. NO. :		
		56167-101-C1		

SPECIFICATION						
지시외 용접치수	절삭가공치수의 지시외 일반치수 허용차 (KS B ISO2768-1 중급)					
	구 분	0.5 이상 3 이하	3 을초과 6 이하	6 을초과 30 이하	30 을초과 120 이하	120 을초과 400 이하
지시외 모서리부분	SURFACE ROUGHNESS (KS B 0617)					
C= R=	다듬질기호	~	▽	▽▽	▽▽▽	▽▽▽▽
	Rmax	100S	25S	6.3S	0.8S	
	PRESSURE	##### (kg/cm <sup>2</sup> )				
	SPRAY ANGLE (±7°)	#####				
	CAPACITY (ℓ/min ±7%)	#####				



**Spraying Systems Co., Korea**  
Experts in Spray Technology