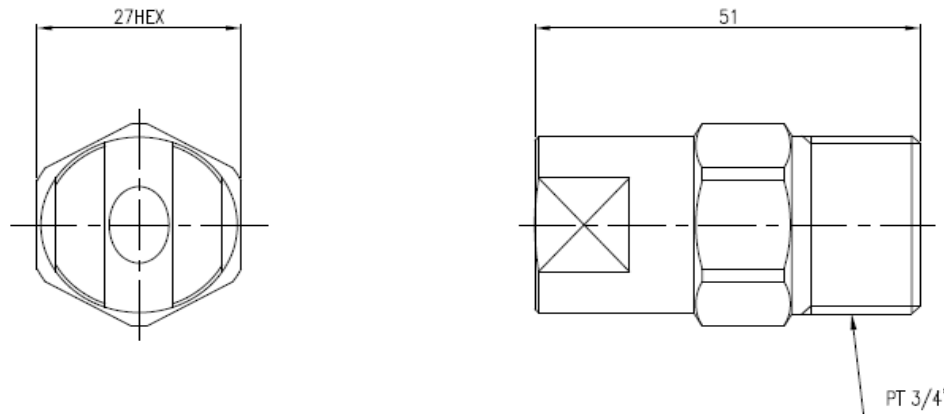


ECD NO.	DATE	REVISION & DESCRIPTION	REVISED	CHECKED


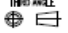
홈페이지_제철카탈로그

Spray Nozzle Design Data

ITEM NAME - SPRAY NOZZLE
 PATTERN - FLAT
 SPRAY PATTERN
 CONNECTION - 3/4" PT
 THREAD TYPE
 MATERIAL - SUS303



SPECIFICATION					
Nozzle Inlet Conn. PT	Capacity Size	Water Pressure (Kg/Cm ²)	Water Flow Rate (L/Min)	Spray Angle	Material
3/4"	250	3.0	90.0	157°	SUS303

1	NOZZLE	SUS303	1	
ITEM	COMPONENT	MATERIAL	Q'TY	REMARKS
DESC.	KHB3/4U-SS 155230E	CUSTOMER :	포스코	
	VEEJET	PRODUCT NAME :	KHB3/4U-SS 155230E	
APP BY.	CH BY.	DES BY.		
B.S.KIM	J.M.LEE	J.H.JUNG		
 Spraying Systems Co., Korea Experts in Spray Technology		SCALE :	CREATE DATE :	
		1:1	2016.03.03	
			DWG. NO. : 56064-037-C1	

지시와 용접치수	절삭가공치수의 지시와 일반치수 허용차 (KS B ISO2768-1 준급)						SPECIFICATION	
	구 분	0.5 이상 3 이하	3 을초과 6 이하	6 을초과 30 이하	30 을초과 120 이하	120 을초과 400 이하	PRESSURE	SPRAY ANGLE (±7°) (xxx)~(xxx)~(xxx)
	허용차	±0.1	±0.1	±0.2	±0.3	±0.5		
지시와 모서리부분	SURFACE ROUGHNESS (KS B 0617)						(XXX) (kg/cm ²)	(XXX)~(XXX)~(XXX) CAPACITY (ℓ/min ±7%)
C= R=	다듬질기호	~	▽	▽▽	▽▽▽	▽▽▽▽		
	Rmax	100S	25S	6.3S	0.8S			