

# Fächerstrahldüsen mit Schwalbenschwanz

## Flat Spray Tips with Dovetail

### Anwendungen

- Reinigungsanlagen
- Kühlrohre
- Spritzrohre
- Walzen- und Walzgut-Kühlung
- Oberflächenbehandlung

### Applications

- Cleaning Equipment
- Cooling Headers
- Spray Headers
- Continuous Casting
- Surface Treatment

**Standard: Fächerstrahl um 15° versetzt.**  
Fächerstrahl parallel auf Anfrage.

**Standard: Flat Fan 15° offset.**  
Flat Fan parallel on request.

## Volumenstromtabelle / Capacity FSUN-S-3/4"

Düsen- typ Nozzle Type	Durchfluss l/min Capacity l/min						A ∅ (mm)	Spritzwinkel bei 5 bar/Spray Angle at 5 bar 20° 30° 45° 60° 75° 90° 120°							
	0,5 bar	1,0 bar	2,0 bar	3,0 bar	5,0 bar	10,0 bar		Engster Querschnitt (mm) Max. Free Passage (mm)							
FSUN-S-10	3,2	4,5	6,3	7,8	10,0	14,1	3,0	2,5	2,4	2,4	2,1	1,8	1,7	1,6	
FSUN-S-13	4,1	5,8	8,2	10,1	13,0	18,4	3,5	2,8	2,7	2,6	2,3	2,1	1,9	1,7	
FSUN-S-16	5,1	7,2	10,1	12,4	16,0	22,6	4,0	3,2	3,1	3,0	2,7	2,5	2,2	2,0	
FSUN-S-20	6,3	8,9	12,7	15,5	20,0	28,3	4,5	3,6	3,5	3,4	3,0	2,8	2,4	2,3	
FSUN-S-25	7,9	11,2	15,8	19,4	25,0	35,4	5,0	4,0	4,0	3,8	3,4	3,3	3,1	2,6	
FSUN-S-32	10,1	14,3	20,2	24,8	32,0	45,3	5,5	4,5	4,2	4,2	4,1	3,7	3,6	2,9	
FSUN-S-40	12,7	17,9	25,3	31,0	40,0	56,6	6,0	5,3	5,0	4,7	4,3	4,1	3,9	3,2	
FSUN-S-50	15,8	22,4	31,6	38,7	50,0	70,7	7,0	5,8	5,6	5,2	4,8	4,5	4,2	3,7	
FSUN-S-63	19,9	28,2	39,8	48,8	63,0	89,1	8,0	6,5	6,4	5,9	5,5	5,2	4,9	4,4	
FSUN-S-80	25,3	35,8	50,6	62,0	80,0	113,1	9,0	7,1	7,2	6,4	6,2	5,8	4,9	4,8	
FSUN-S-100	31,6	44,7	63,2	77,5	100,0	141,4	10,0	8,3	8,2	7,4	7,4	6,6	6,5	5,7	
FSUN-S-130	41,4	58,1	82,2	100,7	130,0	183,8	11,0	9,4	9,3	8,6	8,5	7,9	7,6	6,6	
FSUN-S-160	50,6	71,6	101,2	123,9	160,0	226,3	12,0	10,6	10,4	9,8	9,5	8,8	8,7	7,5	

A = Äquiv. Bohrungsdurchmesser / Equiv. Orifice Diameter

■ = Gesamtbauhöhe 19 mm / Overall height 19 mm

**Material:** Ms 1.4305 1.4571

**Material:** Brass SS303 SS316

**Anschluss:** Ü-Mutter G 3/4"

**Connection:** Tip-Retainer 3/4" BSPP

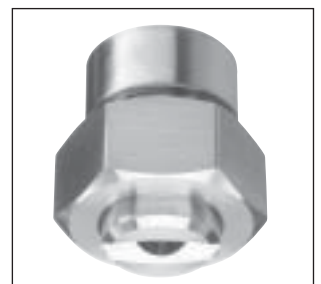
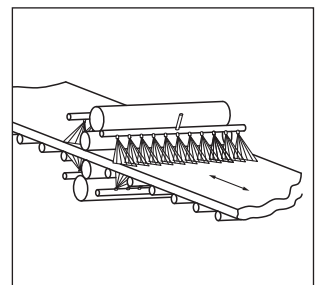
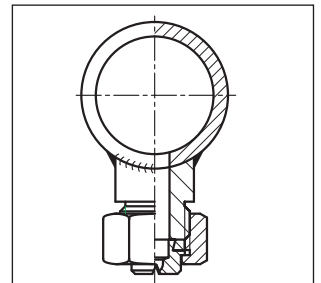
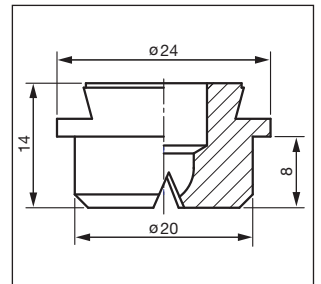
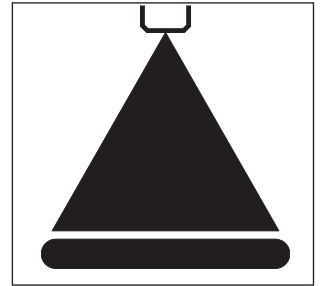
**Bestell-Beispiel:** Düsentyp - Spritzwinkel - Gewinde - Material

**Ordering Information:** Nozzle Type - Spray Angle - Thread - Material

FSUN-S-100 - 60° - G 3/8" - 1.4305

Zubehör Seiten 8.01 - 8.10 / Accessories pages 8.01 - 8.10

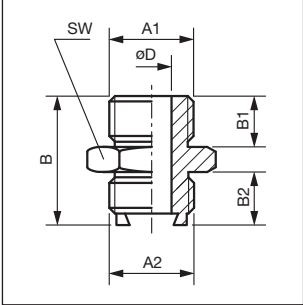
FSUN-S  
3/4"



# Z

## Zubehör Accessories

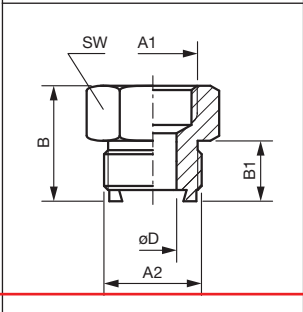
### Doppelnippel mit Schwalbenschwanz Adapter Dovetail / Thread (M)



Typ Type	Abmessungen / Dimensions (mm)							Material			Gewicht Weight ca. g
	A1	A2	B	B1	B2	D	SW HEX	Messing Brass	1.4305 SS303	1.4571 SS316	
BDNF- <sup>3</sup> / <sub>8</sub>	G <sup>3</sup> / <sub>8</sub> "	G <sup>3</sup> / <sub>8</sub> "	25,0	10,0	10,0	7,5	22,0	●	●	●	35
BDNF- <sup>3</sup> / <sub>4</sub>	G <sup>3</sup> / <sub>4</sub> "	G <sup>3</sup> / <sub>4</sub> "	35,0	14,0	14,0	14,0	32,0	●	●	●	95
BDNF-1 <sup>1</sup> / <sub>4</sub>	G 1 <sup>1</sup> / <sub>4</sub> "	G 1 <sup>1</sup> / <sub>4</sub> "	52,0	21,0	21,0	21,0	50,0	●	●	●	350

**Gewinde:** G <sup>3</sup>/<sub>8</sub>"      G <sup>3</sup>/<sub>4</sub>"      G 1<sup>1</sup>/<sub>4</sub>"  
**Thread:** <sup>3</sup>/<sub>8</sub>" BSPP      <sup>3</sup>/<sub>4</sub>" BSPP      1<sup>1</sup>/<sub>4</sub>" BSPP  
**Bestell-Beispiel:**      Typ      Material  
**Ordering Information:**      Type      Material  
   └──┬──┘      └──┬──┘  
   BDNF-<sup>3</sup>/<sub>8</sub> - 1.4305

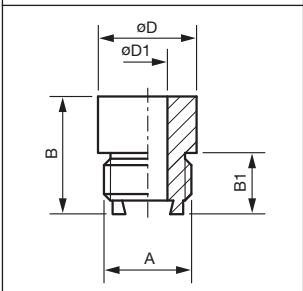
### Muffen mit Schwalbenschwanz / Adapter Dovetail / Thread (F)



Typ Type	Abmessungen / Dimensions (mm)							Material			Gewicht Weight ca. g
	A1	A2	B	B1	D	SW HEX	Messing Brass	1.4305 SS303	1.4571 SS316		
BMF- <sup>3</sup> / <sub>8</sub>	G <sup>3</sup> / <sub>8</sub> "	G <sup>3</sup> / <sub>8</sub> "	25,0	10,0	7,5	22,0	●	●	●	42	
BMF- <sup>3</sup> / <sub>4</sub>	G <sup>3</sup> / <sub>4</sub> "	G <sup>3</sup> / <sub>4</sub> "	35,0	14,0	14,0	32,0	●	●	●	95	
BMF-1 <sup>1</sup> / <sub>4</sub>	G 1 <sup>1</sup> / <sub>4</sub> "	G 1 <sup>1</sup> / <sub>4</sub> "	52,0	21,0	21,0	50,0	●	●	●	410	

**Gewinde:** G <sup>3</sup>/<sub>8</sub>"      G <sup>3</sup>/<sub>4</sub>"      G 1<sup>1</sup>/<sub>4</sub>"  
**Thread:** <sup>3</sup>/<sub>8</sub>" BSPP      <sup>3</sup>/<sub>4</sub>" BSPP      1<sup>1</sup>/<sub>4</sub>" BSPP  
**Bestell-Beispiel:**      Typ      Material  
**Ordering Information:**      Type      Material  
   └──┬──┘      └──┬──┘  
   BMF-<sup>3</sup>/<sub>8</sub> - 1.4305

### Schweißnippel mit Schwalbenschwanz Adapter Dovetail / Weld-on Type



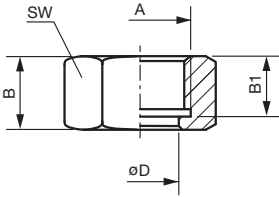
Typ Type	Abmessungen / Dimensions (mm)						Material			Gewicht Weight ca. g
	A	B	B1	D	D1	SS304	Messing Brass	1.4571 SS316		
BSNF- <sup>3</sup> / <sub>8</sub> -18	G <sup>3</sup> / <sub>8</sub> "	18,0	10,0	17,0	7,5	●	●	●	20	
BSNF- <sup>3</sup> / <sub>4</sub> -27	G <sup>3</sup> / <sub>4</sub> "	27,0	14,0	27,0	14,0	●	-	●	72	
BSNF- <sup>3</sup> / <sub>4</sub> -35	G <sup>3</sup> / <sub>4</sub> "	35,0	14,0	27,0	14,0	●	-	●	175	
BSNF- <sup>3</sup> / <sub>4</sub> -42	G <sup>3</sup> / <sub>4</sub> "	42,0	14,0	27,0	14,0	●	-	●	200	
BSNF- <sup>3</sup> / <sub>4</sub> -60	G <sup>3</sup> / <sub>4</sub> "	60,0	14,0	27,0	14,0	●	-	●	280	
BSNF- <sup>3</sup> / <sub>4</sub> -110	G <sup>3</sup> / <sub>4</sub> "	110,0	14,0	27,0	14,0	●	-	●	390	
BSNF-1 <sup>1</sup> / <sub>4</sub> -40	G 1 <sup>1</sup> / <sub>4</sub> "	40,0	21,0	42,0	21,0	●	-	●	285	

**Gewinde:** G <sup>3</sup>/<sub>8</sub>"      G <sup>3</sup>/<sub>4</sub>"      G 1<sup>1</sup>/<sub>4</sub>"  
**Thread:** <sup>3</sup>/<sub>8</sub>" BSPP      <sup>3</sup>/<sub>4</sub>" BSPP      1<sup>1</sup>/<sub>4</sub>" BSPP  
**Bestell-Beispiel:**      Typ      Material  
**Ordering Information:**      Type      Material  
   └──┬──┘      └──┬──┘  
   BSNF-<sup>3</sup>/<sub>8</sub>-18 - SS304

# Z

## Zubehör Accessories

### Überwurfmutter / Tip Retainer



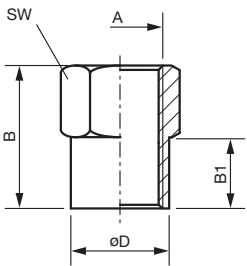
Typ Type	Abmessungen / Dimensions (mm)						Material					Gewicht Weight ca. g
	A	B	B1	D	SW HEX		Messing Brass	1.4305 SS303	1.4571 SS316	PP PP		
D011325-3/8	G 3/8"	12,5	10,0	12,7	22,0		●	●	●	●	25	
D011325-3/4	G 3/4"	16,0	13,0	20,1	32,0		●	●	●		55	
D011325-1 1/4	G 1 1/4"	27,0	21,0	32,2	50,0		●	●	●		210	
D011325-1	G 1"	38,0	32,0	20,1	41,0		-	●	-		205	

**Gewinde:** G 3/8"      G 3/4"      G 1"      G 1 1/4"  
**Thread:** 3/8" BSPP      3/4" BSPP      1" BSPP      1 1/4" BSPP

**Bestell-Beispiel:**      Typ      Material  
**Ordering Information:**      Type      Material      Size

CP - D011325 - SS - P3/8

### Muffen / Adapter Thread (F/F)



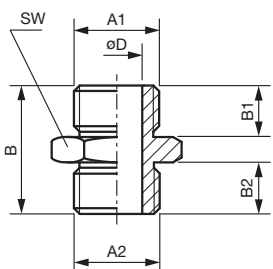
Typ Type	Abmessungen / Dimensions (mm)						Material					Gewicht Weight ca. g
	A	B	B1	D	SW HEX		PVC PVC	1.0715 M-Steel	Messing Brass	1.4305 SS303	1.4571 SS316	
BM-1/8	G 1/8"	20,0	10,0	13,8	14,0		●	●	●	●	●	18
BM-1/4	G 1/4"	20,0	10,0	16,8	17,0		●	●	●	●	●	22
BM-3/8	G 3/8"	20,0	10,0	21,5	22,0		●	●	●	●	●	28
BM-1/2	G 1/2"	30,0	15,0	26,5	27,0		●	●	●	●	●	70
BM-3/4	G 3/4"	35,0	15,0	31,5	32,0		●	●	●	●	●	110

**Gewinde:** G 1/8"      G 1/4"      G 3/8"      G 1/2"      G 3/4"  
**Thread:** 1/8" BSPP      1/4" BSPP      3/8" BSPP      1/2" BSPP      3/4" BSPP

**Bestell-Beispiel:**      Typ      Material  
**Ordering Information:**      Type      Material

BM-3/8 - 1.4305

### Doppelnippel / Adapter Thread (M/M)



Typ Type	Abmessungen / Dimensions (mm)							Material				Gewicht Weight ca. g
	A1	A2	B	B1	B2	D	SW HEX	Messing Brass	1.4305 SS303	1.4571 SS316		
BDN-3/8-1/4	G 3/8"	G 1/4"	25,0	10,0	10,0	7,0	22,0	●	●	●	30	
BDN-3/8	G 3/8"	G 3/8"	25,0	10,0	10,0	10,0	22,0	●	●	●	32	
BDN-3/8-1/2	G 3/8"	G 1/2"	30,0	10,0	14,0	11,5	27,0	●	●	●	60	
BDN-3/4	G 3/4"	G 3/4"	35,0	14,0	14,0	18,0	32,0	●	●	●	90	

**Gewinde:** G 1/4"      G 3/8"      G 1/2"      G 3/4"  
**Thread:** 1/4" BSPP      3/8" BSPP      1/2" BSPP      3/4" BSPP

**Bestell-Beispiel:**      Typ      Material  
**Ordering Information:**      Type      Material

BDN-3/8-1/4 - 1.4305