

SpiralJet® SPRAY NOZZLES, STANDARD AND EXTRA LARGE FREE PASSAGE SPRAY



FULL CONE NOZZLES



FEATURES AND BENEFITS

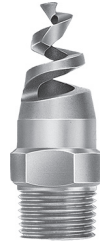
- Solid cone-shaped spray pattern with round impact area.
- Maximum liquid throughput for a given pipe size.
- Maximum free passage design minimizes clogging on HHSJX.
- Compact size enables easy installation or retrofit on most pipe systems.

HHSJ



Threaded/hex
Brass or 316 Stainless Steel
1/4" to 2" NPT or BSPT (M)

HHSJ



Threaded/flats
Cast 316 Stainless Steel
1/4" to 4" NPT or BSPT (M)

HHSJ



Threaded/round
PVC or Teflon®
1/4" to 4" NPT or BSPT (M)

HHSJX



Threaded/hex
Brass
3/8" to 2" NPT or BSPT (M)

HHSJX



Threaded/flats
Cast 316 Stainless Steel
3/8" to 2" NPT or BSPT (M)

HHSJX



Threaded/round
PVC or Polypropylene
3/8" to 2" NPT or BSPT (M)

OPTIMIZATION TIPS

- See page B2 for optimization tips.

APPLICATIONS

- Aerating
- Chemical processing
- Fire suppression/prevention
- Gas scrubbing, cooling
- Washing/rinsing

SEE ALSO

- Accessories
 - Adjustable ball fittings
 - Check valves
 - Pressure gauges
 - Pressure regulators
 - Pressure relief valves
 - Solenoid valves
 - Split-eyelet connectors
 - Strainers





SpiralJet® SPRAY NOZZLES, STANDARD AND EXTRA LARGE FREE PASSAGE SPRAY



FULL CONE NOZZLES

PERFORMANCE DATA

HHSJ

*At the stated pressure in bar.

Inlet Conn. (in.)	Spray Angle at 0.7 bar (°)					Capacity Size	Orifice Dia. Nom. (mm)	Max. Free Passage Dia. (mm)	Capacity (liters per minute)*				
	60	90	120	150	170				0.7	1.5	3	7	25
1/4	●	●	●			07	2.4	2.4	2.7	3.9	5.5	8.4	16.0
	●	●	●	●	●	13	3.2	3.2	5.0	7.3	10.3	15.7	30
	●	●	●	●	●	20	4.0	3.2	7.6	11.2	15.8	24	46
3/8	●					07	2.4	2.4	2.7	3.9	5.5	8.4	16.0
	●					13	3.2	3.2	5.0	7.3	10.3	15.7	30
	●					20	4.0	3.2	7.6	11.2	15.8	24	46
	●	●	●	●	●	30	4.8	3.2	11.4	16.8	24	36	68
	●	●	●	●	●	40	5.6	3.2	15.3	22	32	48	91
	●	●	●	●	●	53	6.4	3.2	20	30	42	64	121
	●	●	●	●	●	82	7.9	3.2	31	46	65	99	187
1/2	●	●	●	●	●	120	9.5	4.8	46	67	95	145	274
	●	●	●	●	●	164	11.1	4.8	63	92	129	198	374
	●	●	●	●	●	210	12.7	4.8	80	117	166	253	479
3/4	●	●	●	●	●	210	12.7	4.8	80	117	166	253	479
1	●	●	●	●	●	340	15.9	6.4	130	190	268	410	775
	●	●	●	●	●	470	19.1	6.4	179	262	371	567	1071
1-1/2	●	●	●	●	●	640	22.2	7.9	244	357	505	772	1459
	●	●	●	●	●	820	25.4	7.9	313	458	647	989	1869
	●	●	●	●	●	960	28.6	7.9	366	536	758	1158	2188
2	●	●	●	●	●	1400	34.9	11.1	534	782	1105	1689	3191
	●	●	●	●	●	1780	38.1	11.1	679	994	1406	2147	4057
3	●	●	●			2560	44.5	14.3	976	1429	2021	3088	5835
	●	●	●			3360	50.8	14.3	1282	1876	2653	4053	7659
4	●	●	●			5250	63.5	15.9	2002	2931	4145	6332	11967

HHSJX

*At the stated pressure in bar.

Inlet Conn. (in.)	Spray Angle at 0.7 bar (°)		Capacity Size	Orifice Dia. Nom. (mm)	Max. Free Passage Dia. (mm)	Capacity (liters per minute)*				
	90	120				0.7	1.5	3	7	25
3/8	●	●	30	4.8	4.8	11.4	16.8	24	36	68
	●	●	40	5.6	5.6	15.3	22	32	48	91
	●	●	53	6.4	6.4	20	30	42	64	121
	●	●	82	7.9	7.9	31	46	65	99	187
1/2	●	●	120	9.5	9.5	46	67	95	145	274
	●	●	164	11.1	11.1	63	92	129	198	374
3/4	●	●	210	12.7	12.7	80	117	166	253	479
1	●	●	340	15.9	15.9	130	190	268	410	775
	●	●	470	19.1	19.1	179	262	371	567	1071
1-1/2	●	●	640	22.2	22.2	244	357	505	772	1459
	●	●	820	25.4	25.4	313	458	647	989	1869
	●	●	960	28.6	28.6	366	536	758	1158	2188
2	●	●	1400	34.9	34.9	534	782	1105	1689	3191
	●	●	1780	38.1	38.1	679	994	1406	2147	4057

Maximum Free Passage Diameter is the maximum diameter as listed of foreign matter that can pass through the nozzle without clogging.



Spraying Systems Co.®
Experts in Spray Technology

PHONE 1 (630) 665-5000, FAX 1 (630) 260-0842
VISIT OUR WEB SITE: WWW.SPRAY.COM, EMAIL: INFO@SPRAY.COM