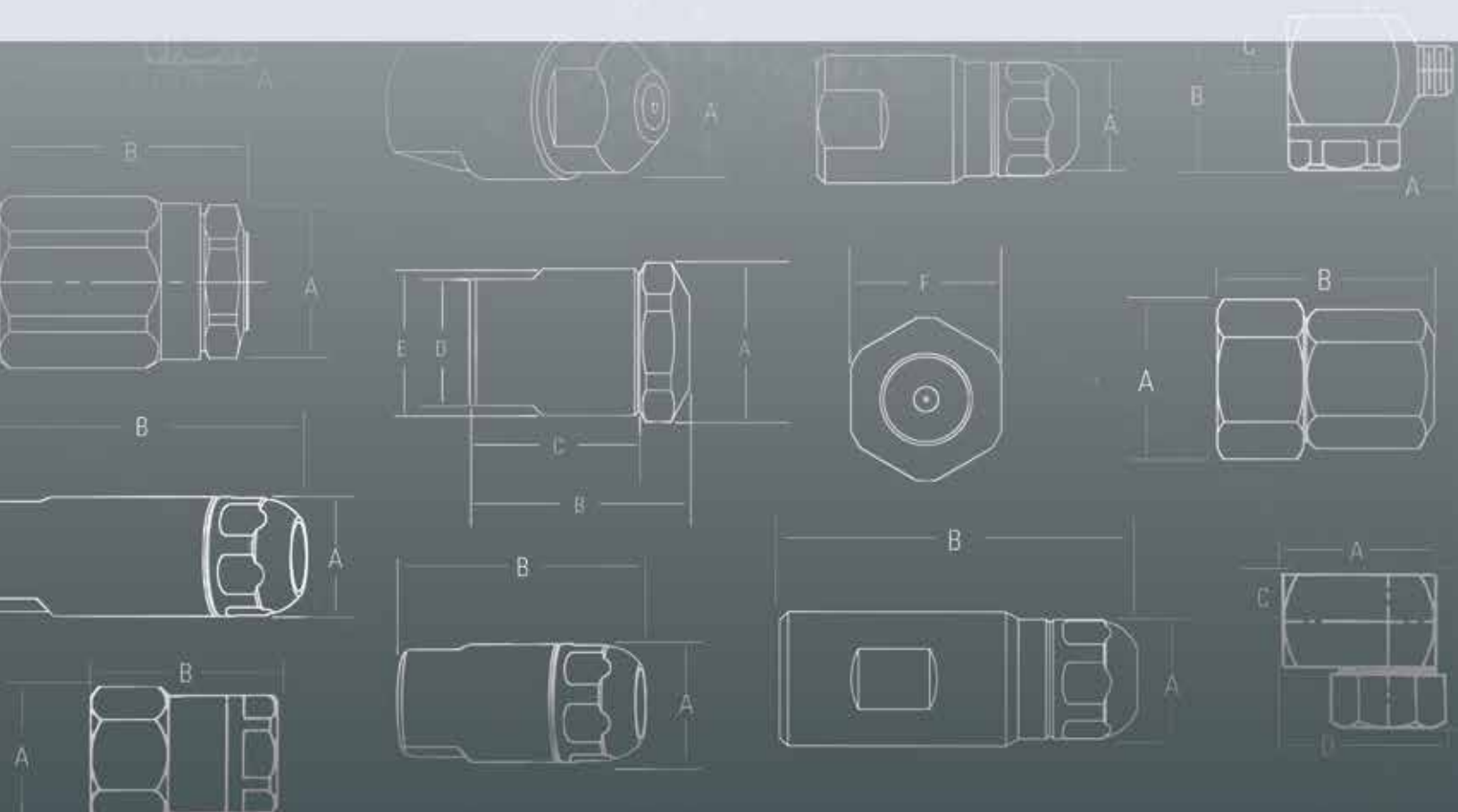












**Spraying Systems Co.**  
Experts in Spray Technology

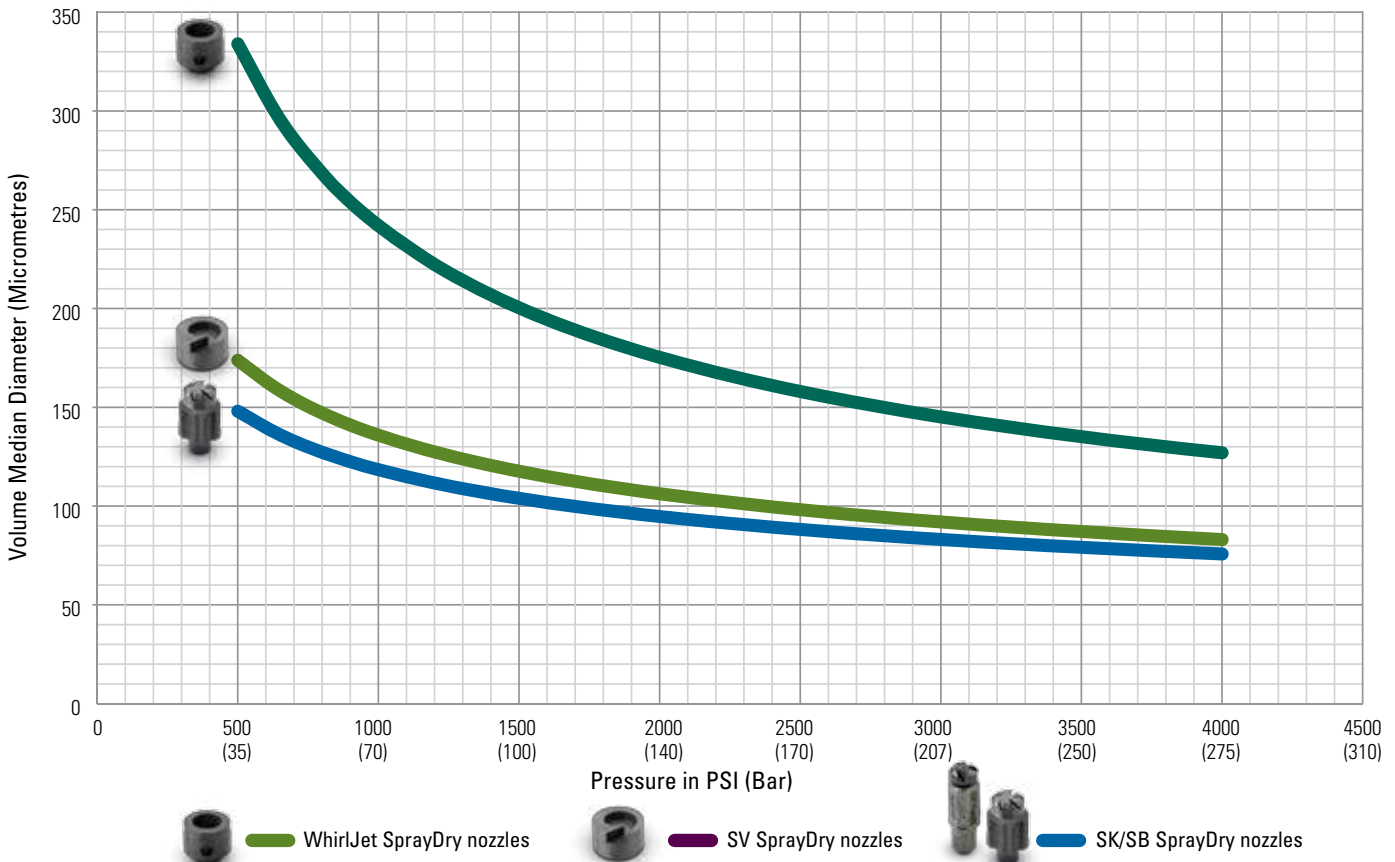
## SPRAYDRY® NOZZLES PERFORMANCE DATA



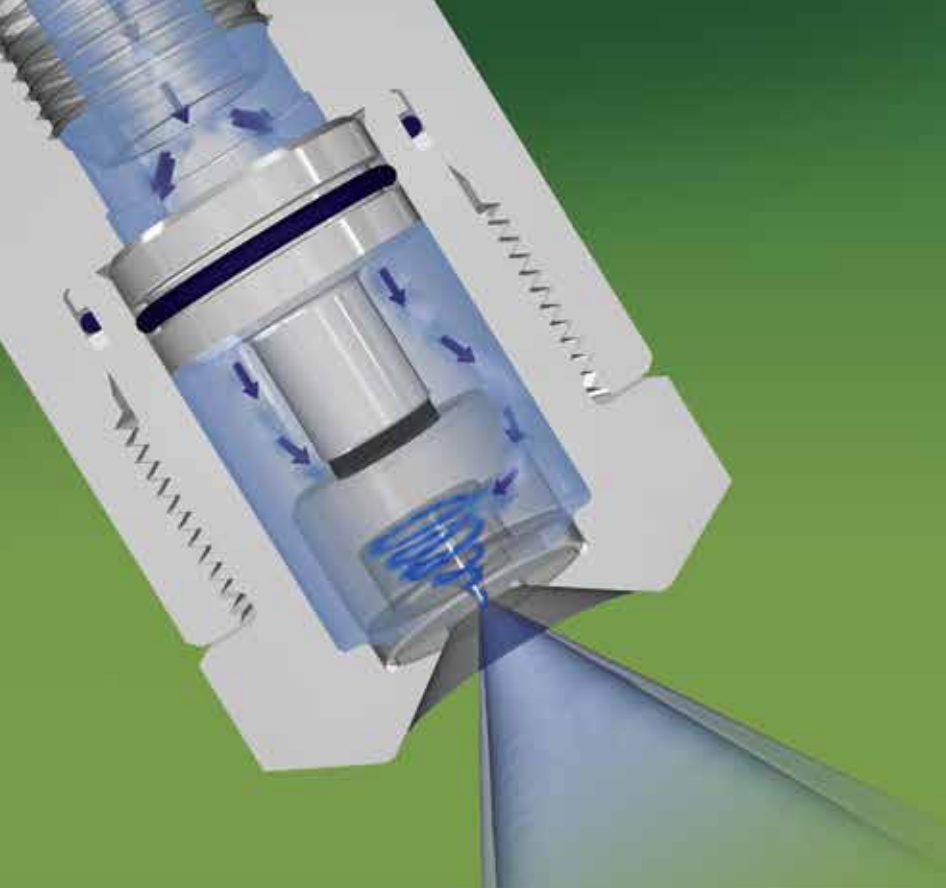
## QUICK REFERENCE GUIDE

Nozzle Type	Capacity range gph (l/hr)	Pressure range psi (bar)	Spray Angle Range	Drop Size Range (Dv0.5 microns)	Description	Page
 <b>SV SprayDry® Nozzles</b>  Swirlchamber and orifice design	4.6 to 3,003 (17.4 to 11,366)	200 to 10,000 (13.8 to 690)	49° to 90°	20 to 650	<ul style="list-style-type: none"> <li>Largest maximum free passage</li> <li>Ideal for spraying slurries with high solids such as milk and whey</li> </ul>	3
 <b>SK SprayDry Nozzles</b>  Slotted core and orifice insert design	2.8 to 400 (10.6 to 1514)	500 to 7,000 (35 to 480 bar)	44° to 90°	30 to 150	<ul style="list-style-type: none"> <li>Low flow rates</li> <li>Small droplets that evaporate quickly</li> <li>Ideal for infant formula and pharmaceuticals</li> </ul>	9
 <b>SB SprayDry Nozzles</b>  Slotted core and orifice design	38.9 to 1,508 (147 to 5,708)	500 to 7,000 (35 to 480 bar)	34° to 109°	40 to 200	<ul style="list-style-type: none"> <li>Spray viscous liquids effectively</li> <li>Ideal for flavorings and dairy products</li> </ul>	17
 <b>AA104 &amp; AA-SSTC WhirlJet® SprayDry Nozzles</b>  Whirlchamber and orifice design	10.2 to 3,019 (39 to 11,427)	100 to 5,000 (7 to 340 bar)	19° to 104°	50 to 1000	<ul style="list-style-type: none"> <li>Coarser droplets</li> <li>Lower pressures</li> <li>Ideal for coffee and detergents</li> </ul>	23

### DROP SIZE COMPARISON: SV, SK/SB AND WHIRLJET SPRAYDRY NOZZLES



\*Spraying water at 70°F (21°C). Dv0.5 shown at various pressures for WhirlJet AA104 with WC5 and WI3; SV with SVS6 and SV103; SB with SBBY44 and SIBY40



## SV SPRAYDRY® NOZZLES



# SV SPRAYDRY® NOZZLES PERFORMANCE DATA

Swirl-chamber SVS_ No.	Orifice Insert SVI_		Spray Angle					Water Capacity – GPH Gallons Per Hour (LPH Liters Per Hour)*						
	Orifice Size	Orifice Dia Inches (mm)	"B" At 12 Inches (30.5cm) spray distance					200 psi (15 bar)	500 psi (35 bar)	1000 psi (70 bar)	2000 psi (150 bar)	3000 psi (250 bar)	5000 psi (400 bar)	10000 psi (690 bar)
			"A" 1000 psi (70 bar)	500 psi (35 bar)	1000 psi (70 bar)	2000 psi (140 bar)	3000 psi (207 bar)							
1	021	0.021 (0.53)	49	56	36	9	8	4.6 (18.3)	7.3 (28.0)	10.4 (39.6)	14.7 (58.0)	18.0 (74.9)	23.2 (94.7)	32.8 (124.4)
2	021	0.021 (0.53)	59	46	28	10	9	5.4 (21.2)	8.5 (32.4)	12.0 (45.8)	17.0 (67.0)	20.8 (86.5)	26.8 (109.4)	37.9 (143.7)
1	025	0.025 (0.64)	55	63	45	20	9	5.5 (21.9)	8.8 (33.5)	12.4 (47.3)	17.5 (69.3)	21.5 (89.4)	27.7 (113.1)	39.2 (148.5)
1	029	0.029 (0.74)	59	69	53	30	19	6.5 (25.5)	10.2 (38.9)	14.4 (55)	20.4 (80.6)	25.0 (104)	32.3 (131.6)	45.6 (172.8)
2	025	0.025 (0.64)	61	54	37	18	11	6.5 (25.8)	10.3 (39.4)	14.6 (55.7)	20.6 (81.5)	25.3 (105.2)	32.6 (133.1)	46.2 (174.8)
1	031	0.031 (0.79)	61	72	57	34	23	6.9 (27.3)	10.9 (41.7)	15.4 (58.9)	21.8 (86.2)	26.8 (111.3)	34.5 (140.8)	48.8 (185)
1	034	0.034 (0.86)	64	75	61	40	28	7.6 (30.0)	12.0 (45.8)	17.0 (64.7)	24.0 (94.7)	29.4 (122.3)	37.9 (154.7)	53.7 (203.2)
3	025	0.025 (0.64)	53	45	27	12	7	7.6 (29.8)	12.0 (45.6)	16.9 (64.5)	23.9 (94.4)	29.3 (121.8)	37.8 (154.1)	51.7 (203.6)
2	029	0.029 (0.74)	64	60	44	25	17	7.7 (30.5)	12.2 (46.5)	17.3 (65.8)	24.4 (96.3)	29.9 (124.4)	38.6 (157.3)	54.6 (206.6)
1	037	0.037 (0.94)	67	79	66	46	34	8.3 (32.7)	13.1 (49.9)	18.5 (70.5)	26.2 (103.3)	32.0 (133.3)	41.4 (168.6)	58.5 (221.5)
1	040	0.040 (1.02)	71	82	70	51	39	9.0 (35.4)	14.2 (54.0)	20.0 (76.4)	28.3 (111.8)	34.7 (144.3)	44.8 (182.6)	63.3 (239.8)
2	034	0.034 (0.86)	67	67	52	33	24	9.2 (36.4)	14.6 (55.7)	20.6 (78.7)	29.2 (115.2)	35.7 (148.7)	46.1 (188.1)	65.3 (247.1)
1	044	0.044 (1.12)	75	86	75	57	45	9.9 (39.0)	15.6 (59.5)	22.1 (84.2)	31.2 (123.2)	38.2 (159.1)	49.4 (201.2)	69.8 (264.3)
1	049	0.049 (1.24)	80	90	81	64	51	11.0 (43.5)	17.4 (66.4)	24.6 (93.9)	34.8 (137.5)	42.7 (177.5)	55.1 (224.5)	77.9 (294.9)
3	034	0.034 (0.86)	60	57	38	22	17	11.0 (43.4)	17.4 (66.3)	24.6 (93.8)	34.8 (137.3)	42.6 (177.3)	55.0 (224.3)	77.8 (294.2)
2	040	0.040 (1.02)	69	75	60	40	32	11.1 (43.7)	17.5 (66.8)	24.8 (94.5)	35.0 (138.3)	42.9 (178.6)	55.4 (225.9)	78.4 (296.7)
2	043	0.043 (1.09)	71	78	63	44	35	12.0 (47.5)	19.0 (72.5)	26.9 (102.5)	38.0 (150.1)	46.6 (193.8)	60.1 (245.1)	85.0 (321.9)
2	046	0.046 (1.17)	72	81	67	47	38	13.0 (51.2)	20.5 (78.2)	29.0 (110.6)	41.0 (161.9)	50.2 (209)	64.9 (264.4)	91.7 (347.3)
3	040	0.040 (1.02)	64	63	43	28	22	13.9 (54.8)	21.5 (82.1)	30 (114)	41.8 (160)	50.8 (189)	64.9 (248)	90.5 (343)
4	034	0.034 (0.86)	53	54	34	21	17	13.9 (54.8)	21.5 (82.1)	30 (114)	41.8 (160)	50.8 (189)	64.9 (248)	90.5 (343)
2	049	0.049 (1.24)	73	84	70	50	41	13.9 (55.0)	22.0 (84.0)	31.1 (118.8)	44.0 (173.9)	53.9 (224.5)	69.6 (283.9)	98.5 (372.9)
2	052	0.052 (1.32)	75	86	73	53	43	14.9 (58.8)	23.5 (89.8)	33.3 (127)	47.1 (185.9)	57.7 (240)	74.5 (303.6)	105.3 (398.7)
4	040	0.040 (1.02)	58	59	38	25	21	16 (63.2)	25 (95.3)	35 (133)	49 (187)	59.6 (222)	76.4 (292)	107 (405)
5	034	0.034 (0.86)	54	47	27	16	15	16 (63.2)	25 (95.3)	35 (133)	49 (187)	59.6 (222)	76.4 (292)	107 (405)
3	049	0.049 (1.24)	70	70	50	35	29	18.3 (72.3)	28.6 (109)	40 (153)	56 (214)	68.2 (254)	87.3 (333)	122 (463)
4	043	0.043 (1.09)	61	61	40	27	23	18.3 (72.3)	28.6 (109)	40 (153)	56 (214)	68.2 (254)	87.3 (333)	122 (463)
3	055	0.055 (1.40)	73	75	54	39	33	20.5 (80.8)	32.1 (122)	45 (172)	63.2 (241)	77.1 (287)	99 (377)	139 (526)
5	040	0.040 (1.02)	56	51	31	20	18	20.5 (80.8)	32.1 (122)	45 (172)	63.2 (241)	77.1 (287)	99 (377)	139 (526)
6	037	0.037 (0.94)	53	39	25	18	13	20.5 (80.8)	32.1 (122)	45 (172)	63.2 (241)	77.1 (287)	99 (377)	139 (526)
3	058	0.058 (1.47)	75	76	56	41	34	21.5 (85)	34 (130)	48 (183)	67.9 (259)	83.1 (309)	107 (409)	151 (574)
4	052	0.052 (1.32)	67	68	45	32	27	22.5 (88.9)	35.5 (135)	50 (191)	70.5 (269)	86.1 (321)	111 (423)	156 (592)

\* Based on spraying water at 70°F (21°C)

NOTE: In the tabulation, the psi and bar values are not direct conversions of each other. Also, the GPH and LPH values are not direct conversions of each other.





# SV SPRAYDRY® NOZZLES PERFORMANCE DATA

Swirl-chamber SVS_ No.	Orifice Insert SVI_		Spray Angle					Water Capacity – GPH Gallons Per Hour (LPH Liters Per Hour)*						
	Orifice Size	Orifice Dia Inches (mm)	"B" At 12 Inches (30.5cm) spray distance					200 psi (15 bar)	500 psi (35 bar)	1000 psi (70 bar)	2000 psi (150 bar)	3000 psi (250 bar)	5000 psi (400 bar)	10000 psi (690 bar)
			1000 psi (70 bar)	500 psi (35 bar)	1000 psi (70 bar)	2000 psi (140 bar)	3000 psi (207 bar)							
5	043	0.043 (1.09)	58	54	33	21	19	22.5 (88.9)	35.5 (135)	50 (191)	70.5 (269)	86.1 (321)	111 (423)	156 (592)
6	040	0.040 (1.02)	54	42	26	19	14	22.5 (88.9)	35.5 (135)	50 (191)	70.5 (269)	86.1 (321)	111 (423)	156 (592)
3	061	0.061 (1.55)	76	78	58	42	36	22.8 (90.1)	36.1 (138)	51 (195)	72.1 (275)	88.3 (329)	114 (435)	161 (611)
3	064	0.064 (1.63)	78	80	60	44	38	23.5 (92.9)	37.2 (142)	52.5 (200)	74.2 (283)	90.8 (338)	117 (447)	166 (627)
3	067	0.067 (1.70)	80	82	61	46	39	24.8 (97.9)	39 (149)	55 (210)	77.5 (296)	94.7 (353)	122 (465)	172 (651)
4	058	0.058 (1.47)	71	71	48	35	30	24.8 (97.9)	39 (149)	55 (210)	77.5 (296)	94.7 (353)	122 (465)	172 (651)
5	049	0.049 (1.24)	61	58	36	24	21	24.9 (98.3)	39.1 (149)	55.1 (210)	77.6 (296)	94.9 (353)	122 (466)	172 (651)
3	070	0.070 (1.78)	81	83	63	47	41	26.6 (105)	42 (160)	59.3 (226)	83.8 (320)	103 (382)	132 (505)	187 (708)
5	052	0.052 (1.32)	62	59	37	25	22	26.6 (105)	42 (160)	59.3 (226)	83.8 (320)	103 (382)	132 (505)	187 (708)
6	046	0.046 (1.17)	56	47	29	21	17	26.6 (105)	42 (160)	59.3 (226)	83.8 (320)	103 (382)	132 (505)	187 (708)
5	058	0.058 (1.47)	65	63	39	27	24	31 (122)	48.9 (187)	69.1 (264)	97.6 (372)	120 (445)	154 (588)	218 (825)
4	070	0.070 (1.78)	77	77	53	40	34	31.1 (123)	49.1 (187)	69.4 (265)	98.1 (374)	120 (447)	155 (591)	219 (829)
6	052	0.052 (1.32)	59	51	31	23	19	31.1 (123)	49.1 (187)	69.4 (265)	98.1 (374)	120 (447)	155 (591)	219 (829)
4	073	0.073 (1.85)	79	79	54	41	35	34.5 (136)	54.5 (208)	77 (294)	109 (415)	133 (496)	172 (656)	243 (921)
4	076	0.076 (1.93)	80	80	55	43	36	35.8 (141)	56.6 (216)	80 (305)	113 (431)	139 (516)	179 (682)	253 (957)
6	055	0.055 (1.40)	60	53	32	24	20	35.8 (141)	56.6 (216)	80 (305)	113 (431)	139 (516)	179 (682)	253 (957)
7	049	0.049 (1.24)	53	40	24	20	16	35.8 (141)	56.6 (216)	80 (305)	113 (431)	139 (516)	179 (682)	253 (957)
5	065	0.065 (1.65)	69	66	42	29	26	37.6 (148)	59.3 (226)	83.8 (320)	118 (452)	145 (540)	187 (713)	264 (1001)
4	079	0.079 (2.01)	81	81	56	44	37	38.6 (152)	61 (232)	86.1 (328)	122 (464)	149 (555)	192 (733)	272 (1029)
4	082	0.082 (2.08)	83	82	57	45	38	39.8 (157)	63 (240)	89 (339)	126 (480)	154 (574)	199 (759)	281 (1065)
6	061	0.061 (1.55)	62	57	34	26	22	40.5 (160)	63.9 (244)	90.3 (344)	128 (487)	156 (581)	202 (769)	285 (1078)
7	052	0.052 (1.32)	54	42	25	21	17	40.5 (160)	63.9 (244)	90.3 (344)	128 (487)	156 (581)	202 (769)	285 (1078)
5	070	0.070 (1.78)	71	68	44	31	27	40.5 (160)	64 (244)	90.4 (345)	128 (487)	156 (582)	202 (769)	285 (1079)
4	085	0.085 (2.16)	84	84	58	46	39	40.7 (161)	64.3 (245)	90.9 (346)	128 (490)	157 (585)	203 (773)	287 (1085)
4	088	0.088 (2.24)	85	85	58	47	40	42.6 (168)	67.3 (257)	95.1 (363)	134 (512)	164 (612)	212 (809)	300 (1135)
6	064	0.064 (1.63)	63	59	35	27	23	45 (178)	71.1 (271)	100 (383)	142 (541)	174 (644)	224 (854)	316 (1198)
7	058	0.058 (1.47)	56	46	27	22	19	45 (178)	71.1 (271)	100 (383)	142 (541)	174 (646)	224 (854)	316 (1198)
4	091	0.091 (2.31)	86	86	59	47	41	45 (178)	71.1 (271)	100 (383)	142 (541)	174 (646)	224 (854)	316 (1198)
5	076	0.076 (1.93)	74	71	45	32	29	45.9 (181)	72.4 (276)	102 (390)	144 (551)	177 (658)	228 (870)	322 (1220)
6	070	0.070 (1.78)	65	62	37	28	24	49.5 (195)	78.1 (298)	110 (421)	156 (595)	191 (711)	246 (940)	348 (1318)
7	061	0.061 (1.55)	57	47	28	23	19	49.5 (195)	78.1 (298)	110 (421)	156 (595)	191 (711)	246 (940)	348 (1318)
5	082	0.082 (2.08)	77	73	47	34	30	49.5 (195)	78.1 (298)	110 (421)	156 (595)	191 (711)	246 (940)	348 (1319)

\* Based on spraying water at 70°F (21°C)

NOTE: In the tabulation, the psi and bar values are not direct conversions of each other. Also, the GPH and LPH values are not direct conversions of each other.



# SV SPRAYDRY® NOZZLES PERFORMANCE DATA

Swirl-chamber SVS_	Orifice Insert SVI_		Spray Angle					Water Capacity – GPH Gallons Per Hour (LPH Liters Per Hour)*											
	Orifice Size	Orifice Dia Inches (mm)	"B" At 12 Inches (30.5cm) spray distance					200 psi (15 bar)	500 psi (35 bar)	1000 psi (70 bar)	2000 psi (140 bar)	3000 psi (207 bar)	200 psi (15 bar)	500 psi (35 bar)	1000 psi (70 bar)	2000 psi (150 bar)	3000 psi (250 bar)	5000 psi (400 bar)	10000 psi (690 bar)
			"A"	1000 psi (70 bar)	500 psi (35 bar)	1000 psi (70 bar)	2000 psi (140 bar)												
6	076	0.076 (1.93)	67	65	39	30	26	54 (213)	85.2 (325)	120 (459)	170 (649)	208 (775)	269 (1025)	380 (1438)					
7	064	0.064 (1.63)	58	49	28	24	20	54 (213)	85.2 (325)	120 (459)	170 (649)	208 (775)	269 (1025)	380 (1438)					
5	088	0.088 (2.24)	80	75	49	35	31	54 (213)	85.2 (325)	120 (459)	170 (649)	208 (775)	269 (1025)	380 (1438)					
5	091	0.091 (2.31)	81	76	49	36	32	55.1 (217)	87 (332)	123 (469)	174 (662)	213 (791)	274 (1046)	388 (1467)					
5	094	0.094 (2.39)	83	77	50	37	32	57.3 (226)	90.5 (345)	128 (488)	181 (690)	222 (825)	286 (1091)	405 (1532)					
5	097	0.097 (2.46)	84	78	51	37	33	59.1 (233)	93.4 (356)	132 (504)	187 (712)	229 (851)	295 (1126)	417 (1580)					
5	100	0.100 (2.54)	86	79	51	38	34	60.3 (238)	95.2 (363)	135 (513)	190 (725)	233 (866)	300 (1145)	424 (1607)					
5	103	0.103 (2.62)	87	80	52	39	34	62.2 (245)	98.2 (375)	139 (529)	196 (748)	240 (893)	310 (1181)	438 (1657)					
7	076	0.076 (1.93)	62	55	31	26	23	67.3 (266)	106 (405)	150 (573)	212 (810)	260 (967)	335 (1279)	474 (1794)					
6	088	0.088 (2.24)	71	70	41	32	29	67.5 (266)	107 (406)	151 (574)	213 (811)	260 (969)	336 (1281)	475 (1797)					
8	067	0.067 (1.70)	53	44	19	13	12	67.5 (266)	107 (406)	151 (574)	213 (811)	260 (969)	336 (1281)	475 (1797)					
5	109	0.109 (2.77)	90	82	53	40	35	67.5 (266)	107 (406)	151 (574)	213 (811)	260 (969)	336 (1281)	475 (1797)					
6	103	0.103 (2.62)	77	75	44	35	31	80.8 (319)	128 (487)	180 (688)	255 (972)	312 (1161)	402 (1535)	569 (2153)					
7	085	0.085 (2.16)	64	59	33	27	25	81.2 (321)	128 (489)	181 (691)	256 (977)	314 (1167)	405 (1543)	572 (2164)					
9	074	0.074 (1.88)	54	40	17	15	14	81.2 (321)	128 (489)	181 (691)	256 (977)	314 (1167)	405 (1543)	572 (2164)					
6	106	0.106 (2.69)	78	76	45	35	32	84.9 (335)	134 (511)	189 (722)	268 (1021)	328 (1219)	423 (1612)	597 (2261)					
6	109	0.109 (2.77)	79	77	46	36	32	87.8 (347)	139 (529)	196 (747)	277 (1056)	339 (1262)	437 (1668)	618 (2340)					
6	112	0.112 (2.84)	80	78	46	36	33	90.1 (356)	142 (543)	201 (767)	284 (1083)	348 (1294)	449 (1711)	634 (2400)					
6	115	0.115 (2.92)	81	79	47	37	33	94.2 (372)	149 (567)	210 (801)	297 (1132)	363 (1353)	469 (1788)	663 (2509)					
8	082	0.082 (2.08)	57	51	23	18	16	94.6 (373)	149 (570)	211 (805)	298 (1137)	365 (1359)	471 (1796)	666 (2520)					
7	097	0.097 (2.46)	68	63	36	29	27	94.9 (374)	150 (571)	212 (807)	299 (1141)	366 (1363)	472 (1802)	668 (2528)					
6	118	0.118 (3.00)	82	80	47	37	34	95.4 (377)	151 (575)	213 (812)	301 (1148)	368 (1371)	475 (1812)	672 (2543)					
6	127	0.127 (3.23)	85	83	48	38	35	108 (427)	171 (652)	241 (921)	341 (1301)	418 (1555)	539 (2055)	762 (2883)					
7	106	0.106 (2.69)	71	66	37	30	28	108 (427)	171 (652)	241 (921)	341 (1301)	418 (1555)	539 (2055)	762 (2883)					
8	091	0.091 (2.31)	59	54	25	20	18	108 (428)	171 (653)	242 (922)	342 (1303)	418 (1557)	540 (2058)	763 (2887)					
9	082	0.082 (2.08)	57	44	19	16	15	108 (428)	171 (653)	242 (922)	342 (1303)	418 (1557)	540 (2058)	763 (2887)					
6	142	0.142 (3.61)	91	87	51	40	37	122 (480)	192 (732)	271 (1035)	383 (1462)	469 (1746)	605 (2309)	855 (3239)					
7	118	0.118 (3.00)	74	70	39	32	29	122 (481)	192 (734)	272 (1037)	384 (1465)	470 (1750)	607 (2314)	857 (3247)					
8	100	0.100 (2.54)	61	57	27	22	20	122 (481)	192 (734)	272 (1037)	384 (1465)	470 (1750)	607 (2314)	857 (3247)					
9	088	0.088 (2.24)	58	46	20	18	16	122 (481)	192 (734)	272 (1037)	384 (1465)	470 (1750)	607 (2314)	857 (3247)					
8	106	0.106 (2.69)	63	59	29	23	22	135 (535)	214 (817)	303 (1154)	428 (1631)	523 (1948)	675 (2576)	954 (3614)					
7	132	0.132 (3.35)	79	73	41	33	31	137 (514)	224 (854)	316 (1207)	447 (1705)	547 (2037)	706 (2693)	998 (3778)					

\* Based on spraying water at 70°F (21°C)

NOTE: In the tabulation, the psi and bar values are not direct conversions of each other. Also, the GPH and LPH values are not direct conversions of each other.



# SV SPRAYDRY® NOZZLES PERFORMANCE DATA

Swirl-chamber SVS_ No.	Orifice Insert SVI_		Spray Angle					Water Capacity – GPH Gallons Per Hour (LPH Liters Per Hour)*						
	Orifice Size	Orifice Dia Inches (mm)	"B" At 12 Inches (30.5cm) spray distance					200 psi (15 bar)	500 psi (35 bar)	1000 psi (70 bar)	2000 psi (150 bar)	3000 psi (250 bar)	5000 psi (400 bar)	10000 psi (690 bar)
			1000 psi (70 bar)	500 psi (35 bar)	1000 psi (70 bar)	2000 psi (140 bar)	3000 psi (207 bar)							
7	124	0.124 (3.15)	76	71	40	32	30	131 (518)	207 (790)	293 (1116)	413 (1577)	506 (1884)	653 (2490)	923 (3494)
7	127	0.127 (3.23)	77	72	40	33	31	135 (535)	214 (816)	302 (1153)	427 (1629)	523 (1946)	675 (2573)	953 (3610)
9	094	0.094 (2.39)	60	49	21	19	17	136 (535)	214 (817)	303 (1154)	428 (1631)	523 (1948)	675 (2576)	954 (3614)
7	140	0.140 (3.56)	81	75	42	34	32	152 (599)	240 (914)	339 (1292)	479 (1825)	586 (2181)	756 (2883)	1068 (4044)
7	145	0.145 (3.68)	82	77	43	34	33	158 (624)	250 (952)	353 (1346)	499 (1901)	610 (2271)	787 (3003)	1113 (4213)
8	121	0.121 (3.07)	67	64	31	26	24	158 (624)	250 (952)	353 (1346)	499 (1901)	610 (2271)	787 (3003)	1113 (4213)
9	106	0.106 (2.69)	63	53	23	21	19	158 (624)	250 (952)	353 (1346)	499 (1901)	610 (2271)	787 (3003)	1113 (4213)
9	116	0.116 (2.95)	66	56	25	23	21	179 (649)	284 (1082)	401 (1529)	566 (2160)	693 (2580)	894 (3411)	1264 (4786)
10	103	0.103 (2.62)	62	44	21	19	18	173 (683)	273 (1042)	386 (1471)	545 (2077)	666 (2480)	859 (3278)	1214 (4595)
8	133	0.133 (3.38)	70	67	33	28	26	181 (713)	285 (1088)	403 (1537)	569 (2172)	697 (2594)	899 (3430)	1271 (4812)
8	140	0.140 (3.56)	72	68	34	29	28	194 (766)	306 (1168)	433 (1651)	612 (2332)	749 (2786)	966 (3684)	1365 (5168)
8	145	0.145 (3.68)	73	70	35	29	28	203 (802)	321 (1223)	453 (1728)	640 (2442)	784 (2917)	1011 (3857)	1429 (5411)
9	127	0.127 (3.23)	69	59	27	24	22	203 (802)	321 (1223)	453 (1728)	640 (2442)	784 (2917)	1011 (3857)	1429 (5411)
10	115	0.115 (2.92)	65	49	24	21	20	204 (807)	322 (1229)	455 (1734)	641 (2446)	784 (2919)	1011 (3855)	1429 (5399)
8	151	0.151 (3.84)	75	71	36	30	29	214 (846)	338 (1291)	478 (1824)	676 (2577)	827 (3079)	1067 (4071)	1508 (5711)
8	157	0.157 (3.99)	77	72	37	31	30	225 (888)	355 (1354)	502 (1914)	709 (2704)	868 (3230)	1120 (4271)	1582 (5992)
9	136	0.136 (3.45)	71	62	28	25	24	225 (888)	355 (1355)	502 (1915)	709 (2706)	869 (3232)	1121 (4273)	1583 (5995)
10	124	0.124 (3.15)	68	52	25	22	21	228 (900)	359 (1369)	506 (1931)	714 (2722)	873 (3248)	1124 (4287)	1585 (6002)
9	148	0.148 (3.76)	74	65	29	27	25	247 (977)	391 (1491)	552 (2106)	780 (2976)	955 (3555)	1233 (4701)	1742 (6594)
10	136	0.136 (3.45)	71	55	27	24	23	259 (1024)	408 (1557)	575 (2194)	811 (3092)	991 (3688)	1276 (4866)	1798 (6808)
9	154	0.154 (3.91)	76	66	30	28	26	269 (1062)	425 (1621)	601 (2290)	849 (3236)	1039 (3866)	1340 (5112)	1894 (7171)
9	164	0.164 (4.17)	78	69	31	29	27	294 (1162)	464 (1771)	656 (2500)	926 (3531)	1133 (4216)	1461 (5571)	2063 (7810)
10	151	0.151 (3.84)	75	59	29	26	24	299 (1179)	470 (1791)	661 (2523)	932 (3553)	1138 (4236)	1465 (5587)	2063 (7813)
10	157	0.157 (3.99)	77	61	30	26	25	314 (1241)	494 (1884)	696 (2653)	980 (3736)	1197 (4455)	1540 (5874)	2169 (8213)
9	172	0.172 (4.37)	81	70	32	30	27	315 (1243)	496 (1892)	700 (2669)	987 (3765)	1207 (4494)	1556 (5934)	2195 (8311)
10	164	0.164 (4.17)	78	63	31	27	26	327 (1291)	516 (1968)	728 (2777)	1028 (3920)	1258 (4681)	1621 (6183)	2289 (8666)
9	180	0.180 (4.57)	83	72	33	30	28	336 (1325)	528 (2014)	744 (2839)	1049 (4001)	1282 (4773)	1651 (6298)	2328 (8813)
10	172	0.172 (4.37)	81	65	32	28	26	349 (1379)	550 (2098)	776 (2959)	1094 (4172)	1338 (4978)	1723 (6571)	2430 (9200)
10	180	0.180 (4.57)	83	66	33	29	27	372 (1468)	585 (2231)	824 (3143)	1161 (4428)	1419 (5281)	1827 (6967)	2574 (9745)
10	188	0.188 (4.78)	85	68	34	30	28	394 (1556)	620 (2363)	872 (3326)	1228 (4683)	1500 (5582)	1930 (7360)	2717 (10288)
10	195	0.195 (4.95)	87	70	35	30	28	414 (1633)	650 (2478)	914 (3486)	1286 (4905)	1570 (5845)	2020 (7703)	2842 (10760)
10	204	0.204 (5.18)	89	71	36	31	29	439 (1733)	689 (2626)	968 (3692)	1361 (5192)	1662 (6184)	2136 (8146)	3003 (11371)

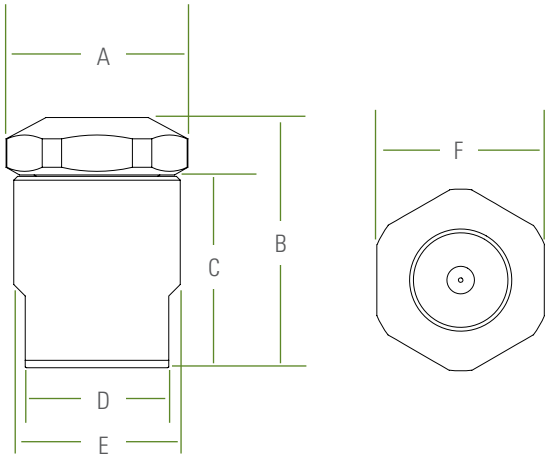
\* Based on spraying water at 70°F (21°C)

NOTE: In the tabulation, the psi and bar values are not direct conversions of each other. Also, the GPH and LPH values are not direct conversions of each other.



# SV SPRAYDRY® NOZZLES SPECIFICATIONS

## DIMENSIONS AND WEIGHTS



## SV SPRAYDRY NOZZLES

Inlet Conn. NPT/BSPT (F)	A Dia. in. (mm)	B Length in. (mm)	C Length in. (mm)	D Flat in. (mm)	E Dia. in. (mm)	F Flat in. (mm)	Net Weight lbs. (kg)
1/4", 3/8", 1/2"	1.90 (48.3)	2.62 (66.4)	2.00 (50.8)	1.5 (38.1)	1.74 (44.2)	1.75 (44.5)	1.5 (.67)

## MATERIALS

### ORIFICE INSERT / CORE MATERIAL CODE

Material	Orifice Insert Material Code	Swirlchamber Material Code
Tungsten Carbide	SVI - ___ - YM	SVS ___ - YM
Hardened Stainless Steel	SVI - ___ - HSS	SVS ___ - HSS

### O-RINGS AND BACK-UP RING

Material		Maximum Recommended Operating Temperature*
O-Ring	FDA Compliant Viton® Silicon	400°F (204°C) 450°F (232°C)
Back-up Ring	PEEK™	480°F (249°C)

\* Higher temperature materials available

## ORDERING INFORMATION

		ORIFICE INSERT NO.			SWIRLCHAMBER NO.			
Inlet Conn.	Nozzle Type	+	Orifice Insert	Orifice Insert Dia.	Material Code	+	Swirl chamber Size	Material Code
<p><b>Example</b></p> <p>1/4 SV + SVI - 091 - YM + SVS5 - YM</p>								

\* Orifice Inserts and swirlchambers may be ordered separately. Include material code and size no. as shown above.





## SK SPRAYDRY® NOZZLES



# SK SPRAYDRY® NOZZLES PERFORMANCE DATA

Orifice Insert		Core Size No.	Spray Angle					Water Capacity – GPH Gallons Per Hour (LPH Liters Per Hour)*									
Dia. (mm)	Size No.		"A"		"B" At 12 Inches (30.5cm) Spray Distance			500 psi (35 bar)	1000 psi (70 bar)	2000 psi (140 bar)	3000 psi (207 bar)	500 psi (35 bar)	1000 psi (70 bar)	2000 psi (150 bar)	3000 psi (250 bar)	4000 psi (350 bar)	5000 psi (400 bar)
0.0135 (0.34)	80	16	56	54	57	52	37	25	2.8 (10.8)	3.9 (14.9)	5.4 (21.2)	6.5 (27)	7.5 (31.5)	8.3 (33.6)	9.7 (35.5)		
0.0145 (0.37)	79	16	59	57	59	54	39	27	3 (11.6)	4.2 (16)	5.8 (22.9)	7 (29.1)	8 (34)	8.9 (36.2)	10.4 (38.3)		
0.0135 (0.34)	80	20	53	51	51	47	31	23	3 (11.55)	4.2 (16)	5.8 (22.9)	7 (29)	8 (34)	8.9 (36.2)	10.4 (38.2)		
0.0135 (0.34)	80	17	49	48	46	42	24	21	3.4 (13)	4.7 (18)	6.5 (25.6)	7.9 (32.5)	9 (38)	10 (40.5)	11.7 (42.7)		
0.0145 (0.37)	79	20	55	53	53	49	32	25	3.4 (13)	4.7 (17.9)	6.5 (25.6)	7.9 (32.5)	9 (38.1)	10 (40.5)	11.7 (42.8)		
0.016 (0.41)	78	16	62	60	62	57	42	30	3.5 (13.5)	4.9 (18.7)	6.8 (26.7)	8.2 (33.9)	9.4 (39.7)	10.4 (42.3)	12.2 (44.7)		
0.0135 (0.34)	80	19	38	44	42	36	23	17	3.7 (14.3)	5.3 (20.2)	7.5 (29.6)	9.2 (38.2)	10.6 (45.2)	11.8 (48.3)	14 (51.2)		
0.0145 (0.37)	79	17	51	50	48	44	25	22	3.8 (14.3)	5.2 (19.8)	7.2 (28.3)	8.7 (36)	9.9 (42.1)	11 (44.8)	12.9 (47.4)		
0.016 (0.41)	78	20	58	57	56	52	35	28	3.8 (14.6)	5.3 (20.2)	7.3 (28.9)	8.9 (36.7)	10.2 (43)	11.3 (45.8)	13.2 (48.4)		
0.018 (0.46)	77	16	66	64	65	60	46	34	4.1 (15.7)	5.7 (21.7)	7.9 (31.1)	9.6 (39.6)	10.9 (46.4)	12.2 (49.4)	14.2 (52.2)		
0.0145 (0.37)	79	19	40	45	44	38	25	18	4.1 (15.8)	5.9 (22.3)	8.3 (32.7)	10.1 (42.2)	11.7 (50)	13.1 (53.4)	15.5 (56.7)		
0.016 (0.41)	78	17	54	53	50	46	28	24	4.5 (17.1)	6.2 (23.6)	8.6 (33.8)	10.4 (42.9)	11.9 (50.3)	13.2 (53.5)	15.4 (56.6)		
0.02 (0.51)	76	16	69	67	68	63	49	37	4.6 (17.6)	6.4 (24.4)	8.9 (35)	10.7 (44.5)	12.3 (52.2)	13.7 (55.6)	16 (58.7)		
0.018 (0.46)	77	20	62	61	59	55	38	30	4.6 (17.6)	6.4 (24.5)	8.9 (34.9)	10.7 (44.4)	12.3 (52)	13.7 (55.4)	16 (58.6)		
0.016 (0.41)	78	19	44	48	46	40	26	20	4.9 (18.5)	6.9 (26.2)	9.7 (38.3)	11.9 (49.5)	13.7 (58.5)	15.4 (62.6)	18.2 (66.4)		
0.018 (0.46)	77	17	58	56	53	50	30	26	5.1 (19.5)	7.1 (27.1)	9.8 (38.7)	11.9 (49.3)	13.6 (57.7)	15.1 (61.5)	17.7 (65)		
0.0225 (0.57)	74	16	73	71	72	66	53	41	5.3 (20.3)	7.4 (28.2)	10.3 (40.5)	12.5 (51.6)	14.3 (60.5)	15.9 (64.5)	18.6 (68.2)		
0.02 (0.51)	76	20	65	64	62	58	41	33	5.3 (20.1)	7.3 (27.8)	10.1 (39.9)	12.3 (50.8)	14 (59.5)	15.6 (63.4)	18.3 (67)		
0.018 (0.46)	77	19	48	51	49	43	28	22	5.6 (21.3)	7.9 (30.1)	11.1 (44)	13.7 (56.8)	15.8 (67.2)	17.6 (71.8)	20.9 (76.2)		
0.02 (0.51)	76	17	62	59	56	52	33	28	6 (22.8)	8.3 (31.6)	11.5 (45.4)	13.9 (57.7)	16 (67.7)	17.7 (72.1)	20.8 (76.2)		
0.025 (0.64)	72	16	77	75	75	69	56	44	6.1 (23.3)	8.5 (32.4)	11.8 (46.6)	14.3 (59.4)	16.4 (69.7)	18.3 (74.3)	21.5 (78.6)		
0.0225 (0.57)	74	20	69	68	66	61	44	36	6.3 (23.9)	8.7 (33.2)	12.1 (47.6)	14.6 (60.7)	16.8 (71.1)	18.7 (75.8)	21.9 (80.1)		
0.026 (0.66)	71	16	78	76	76	70	57	45	6.4 (24.4)	8.9 (33.9)	12.4 (48.8)	15 (62.3)	17.2 (73.1)	19.2 (77.9)	22.5 (82.4)		
0.02 (0.51)	76	19	51	54	52	45	30	24	6.5 (24.9)	9.2 (35.2)	13.1 (51.6)	16 (66.6)	18.5 (78.8)	20.7 (84.2)	24.4 (89.3)		
0.018 (0.46)	77	21	45	46	41	35	23	19	6.6 (25.3)	9.2 (35.1)	12.7 (50.2)	15.4 (63.9)	17.7 (74.8)	19.6 (79.7)	23 (84.2)		
0.028 (0.71)	70	16	81	79	78	72	59	48	7 (26.5)	9.7 (37)	13.5 (53.3)	16.4 (68)	18.8 (79.9)	20.9 (85.1)	24.6 (90.1)		
0.029 (0.74)	69	16	82	80	79	73	60	49	7.2 (27.6)	10.1 (38.5)	14.1 (55.5)	17.1 (70.9)	19.6 (83.3)	21.8 (88.8)	25.7 (93.9)		
0.0225 (0.57)	74	17	65	63	59	55	35	31	7.2 (27.4)	10 (38.1)	13.9 (54.7)	16.8 (69.7)	19.3 (81.8)	21.4 (87.1)	25.2 (92.1)		
0.025 (0.64)	72	20	73	72	69	63	47	38	7.3 (27.7)	10.1 (35.6)	14 (55.4)	17 (70.6)	19.5 (82.8)	21.7 (88.3)	25.5 (93.4)		

\* Based on spraying water at 70°F (21°C)

NOTE: In the tabulation, the psi and bar values are not direct conversions of each other. Also, the GPH and LPH values are not direct conversions of each other.

# SK SPRAYDRY® NOZZLES PERFORMANCE DATA

Orifice Insert		Core Size No.	"A"		Spray Angle				Water Capacity – GPH Gallons Per Hour (LPH Liters Per Hour)*						
Dia. (mm)	Size No.		500 psi (35 bar)	1000 psi (70 bar)	"B" At 12 Inches (30.5cm) Spray Distance				500 psi (35 bar)	1000 psi (70 bar)	2000 psi (150 bar)	3000 psi (250 bar)	4000 psi (350 bar)	5000 psi (400 bar)	7000 psi (450 bar)
0.031 (0.79)	68	16	84	82	81	75	62	51	7.7 (29.2)	10.7 (40.8)	14.9 (58.8)	18.1 (75.2)	20.8 (88.4)	23.2 (94.3)	27.3 (99.8)
0.026 (0.66)	71	20	74	73	70	64	48	39	7.7 (29.3)	10.7 (40.8)	14.9 (58.7)	18.1 (74.9)	20.7 (87.9)	23 (93.7)	27.1 (99.1)
0.02 (0.51)	76	21	48	48	43	37	25	20	7.8 (29.7)	10.8 (41.2)	15 (59)	18.1 (75.1)	20.8 (88)	23.1 (93.8)	27 (99.1)
0.0225 (0.57)	74	19	55	58	55	48	32	26	7.9 (30.1)	11.2 (42.6)	15.8 (62.4)	19.4 (80.5)	22.3 (95.3)	25 (102)	29.6 (108)
0.032 (0.81)	67	16	85	83	82	76	63	52	8 (30.6)	11.2 (42.7)	15.6 (61.6)	19 (78.8)	21.8 (92.7)	24.3 (98.8)	28.6 (105)
0.033 (0.84)	66	16	86	84	83	76	64	53	8.2 (31.4)	11.5 (43.9)	16.1 (63.3)	19.5 (81)	22.4 (95.3)	25 (102)	29.4 (108)
0.025 (0.64)	72	17	69	66	62	58	38	33	8.4 (32.1)	11.7 (44.7)	16.3 (64.1)	19.7 (81.8)	22.6 (96)	25.2 (102)	29.5 (108)
0.028 (0.71)	70	20	76	76	72	66	50	41	8.4 (32)	11.7 (44.6)	16.3 (64.2)	19.8 (82)	22.7 (96.3)	25.3 (103)	29.7 (109)
0.035 (0.89)	65	16	88	86	85	78	66	55	8.6 (32.7)	12 (45.8)	16.8 (66.2)	20.4 (84.7)	23.5 (99.7)	26.1 (106)	30.8 (113)
0.026 (0.66)	71	17	70	67	63	59	39	33	8.8 (33.7)	12.3 (46.9)	17.1 (67.4)	20.8 (86)	23.8 (101)	26.5 (108)	31.1 (114)
0.029 (0.74)	69	20	78	76	73	67	51	42	8.8 (33.4)	12.2 (46.5)	17 (67)	20.6 (85.6)	23.7 (101)	26.4 (107)	31 (113)
0.036 (0.91)	64	16	89	87	86	79	67	56	8.9 (34.1)	12.5 (47.7)	17.5 (68.9)	21.3 (88.3)	24.5 (104)	27.3 (111)	32.1 (117)
0.037 (0.94)	63	16	90	88	87	80	67	57	9.1 (34.9)	12.8 (48.8)	17.9 (70.6)	21.8 (90.5)	25.1 (107)	27.9 (114)	32.9 (120)
0.025 (0.64)	72	19	59	61	57	50	34	27	9.2 (35)	13 (49.5)	18.4 (72.5)	22.5 (93.6)	26 (111)	29 (118)	34.4 (126)
0.038 (0.97)	62	16	91	89	88	80	68	58	9.4 (35.7)	13.1 (50)	18.3 (72.3)	22.3 (92.7)	25.7 (109)	28.5 (117)	33.7 (123)
0.031 (0.79)	68	20	80	78	75	69	52	44	9.4 (35.8)	13.1 (50.1)	18.3 (72)	22.2 (92.1)	25.5 (108)	28.4 (115)	33.4 (122)
0.0225 (0.57)	74	21	52	52	46	39	27	22	9.4 (35.7)	13 (49.6)	18.1 (71.1)	21.9 (90.6)	25.1 (106)	27.9 (113)	32.7 (120)
0.039 (0.99)	61	16	92	90	88	81	69	58	9.5 (36.2)	13.3 (50.7)	18.6 (73.5)	22.7 (94.2)	26.1 (111)	29.1 (118)	34.3 (125)
0.032 (0.81)	67	20	81	79	76	70	53	44	9.6 (36.6)	13.4 (51.1)	18.7 (73.7)	22.7 (94.3)	26.1 (111)	29.1 (118)	34.2 (125)
0.026 (0.66)	71	19	60	62	58	51	34	28	9.7 (37)	13.7 (52.3)	19.4 (76.5)	23.8 (98.8)	27.4 (117)	30.7 (125)	36.3 (133)
0.04 (1.02)	60	16	93	90	89	82	70	59	9.8 (37.5)	13.8 (52.6)	19.3 (76.3)	23.6 (97.9)	27.1 (115)	30.2 (123)	35.6 (130)
0.033 (0.84)	66	20	82	80	77	71	54	45	10 (38.2)	14 (53.4)	19.6 (77.1)	23.8 (98.6)	27.3 (116)	30.4 (124)	35.8 (131)
0.028 (0.71)	70	17	72	70	65	61	40	35	10.1 (38.6)	14.1 (53.8)	19.6 (77.4)	23.8 (98.8)	27.4 (116)	30.4 (124)	35.8 (131)
0.029 (0.74)	69	17	73	71	66	62	41	36	10.4 (39.7)	14.5 (55.3)	20.2 (79.7)	24.5 (102)	28.2 (120)	31.3 (127)	36.8 (135)
0.035 (0.89)	65	20	84	82	78	72	55	46	10.6 (40.4)	14.8 (56.4)	20.7 (81.6)	25.2 (104)	28.9 (123)	32.2 (131)	37.9 (139)
0.036 (0.91)	64	20	85	83	79	73	56	47	10.8 (41.2)	15.1 (57.6)	21.1 (83.3)	25.7 (107)	29.6 (126)	32.9 (134)	38.8 (142)
0.025 (0.64)	72	21	56	55	49	42	28	24	10.8 (41.1)	15 (57.2)	20.9 (82.2)	25.3 (105)	29 (123)	32.3 (131)	37.9 (139)
0.037 (0.94)	63	20	86	84	80	74	57	48	11 (42)	15.4 (58.7)	21.6 (85)	26.2 (109)	30.2 (128)	33.6 (137)	39.6 (145)
0.028 (0.71)	70	19	63	65	60	53	36	29	11.2 (42.7)	15.8 (60.4)	22.4 (88.5)	27.5 (114)	31.7 (135)	35.4 (144)	41.9 (153)

\* Based on spraying water at 70°F (21°C)

NOTE: In the tabulation, the psi and bar values are not direct conversions of each other. Also, the GPH and LPH values are not direct conversions of each other.



# SK SPRAYDRY® NOZZLES PERFORMANCE DATA

Orifice Insert		Core Size No.	Spray Angle						Water Capacity – GPH Gallons Per Hour (LPH Liters Per Hour)*									
Dia. (mm)	Size No.		"A"		"B" At 12 Inches (30.5cm) Spray Distance				500 psi (35 bar)	1000 psi (70 bar)	2000 psi (140 bar)	3000 psi (207 bar)	500 psi (35 bar)	1000 psi (70 bar)	2000 psi (150 bar)	3000 psi (250 bar)	4000 psi (350 bar)	5000 psi (400 bar)
0.031 (0.79)	68	17	75	73	68	64	43	37	11.3 (43.2)	15.8 (60.2)	22 (86.9)	26.8 (111)	30.8 (131)	34.2 (139)	40.3 (147)			
0.038 (0.97)	62	20	86	85	81	74	58	48	11.4 (43.3)	15.9 (60.6)	22.3 (87.8)	27.1 (113)	31.2 (133)	34.8 (141)	40.9 (150)			
0.026 (0.66)	71	21	57	56	50	43	29	24	11.4 (43.3)	15.8 (60.3)	22 (86.6)	26.7 (111)	30.6 (130)	34 (138)	40 (146)			
0.029 (0.74)	69	19	64	66	61	53	36	30	11.7 (44.6)	16.5 (63.1)	23.4 (92.3)	28.7 (119)	33.1 (141)	37 (151)	43.8 (160)			
0.032 (0.81)	67	17	76	74	69	64	43	38	11.8 (45.1)	16.5 (62.9)	23 (90.8)	28 (116)	32.2 (137)	35.8 (146)	42.1 (154)			
0.039 (0.99)	61	20	87	86	82	75	58	49	11.8 (45.2)	16.6 (63.3)	23.3 (91.7)	28.3 (118)	32.6 (139)	36.3 (148)	42.8 (157)			
0.033 (0.84)	66	17	77	75	69	65	44	38	12 (45.6)	16.7 (63.7)	23.3 (92)	28.4 (118)	32.6 (138)	36.3 (148)	42.7 (156)			
0.04 (1.02)	60	20	88	87	82	76	59	50	12.1 (46)	16.9 (64.4)	23.7 (93.4)	28.9 (120)	33.2 (141)	37 (151)	43.6 (160)			
0.041 (1.04)	59	20	89	87	83	77	60	50	12.3 (46.8)	17.2 (65.6)	24.1 (95.2)	29.4 (122)	33.8 (144)	37.7 (154)	44.5 (163)			
0.042 (1.07)	58	20	90	88	84	77	60	51	12.7 (48.4)	17.8 (67.9)	25 (98.5)	30.5 (126)	35.1 (149)	39.1 (159)	46.1 (169)			
0.031 (0.79)	68	19	66	68	62	55	37	31	12.9 (49.4)	18.3 (69.8)	25.9 (102)	31.7 (132)	36.6 (156)	40.9 (167)	48.4 (177)			
0.035 (0.89)	65	17	79	77	71	67	46	39	13 (49.6)	18.2 (69.4)	25.4 (100)	31 (128)	35.6 (151)	39.6 (161)	46.6 (171)			
0.043 (1.09)	57	20	90	89	84	78	61	51	13 (49.7)	18.3 (69.8)	25.7 (101)	31.3 (130)	36.1 (153)	40.2 (164)	47.5 (174)			
0.036 (0.91)	64	17	80	78	72	67	46	40	13.2 (50.4)	18.5 (70.5)	25.9 (102)	31.5 (131)	36.2 (154)	40.3 (164)	47.5 (174)			
0.028 (0.71)	70	21	59	59	51	44	30	25	13.2 (50.4)	18.4 (70.2)	25.6 (101)	31.1 (129)	35.7 (151)	39.7 (161)	46.7 (171)			
0.037 (0.94)	63	17	81	79	72	68	47	40	13.6 (52)	19.1 (72.8)	26.7 (105)	32.5 (135)	37.4 (159)	41.7 (170)	49.1 (180)			
0.032 (0.81)	67	19	68	69	63	56	38	31	13.6 (51.9)	19.3 (73.4)	27.2 (107)	33.4 (139)	38.5 (164)	43.1 (176)	50.9 (186)			
0.038 (0.97)	62	17	82	80	73	69	47	41	13.9 (53.1)	19.5 (74.4)	27.3 (108)	33.3 (138)	38.2 (163)	42.6 (173)	50.2 (184)			
0.033 (0.84)	66	19	69	70	64	56	38	32	13.9 (52.9)	19.6 (74.9)	27.8 (110)	34 (141)	39.3 (167)	43.9 (179)	51.9 (190)			
0.029 (0.74)	69	21	60	60	52	45	30	26	13.9 (53.1)	19.4 (74)	27 (107)	32.8 (136)	37.7 (160)	41.9 (170)	49.3 (180)			
0.025 (0.64)	72	27	46	46	40	33	22	17	14.5 (55.4)	20.2 (77)	28.1 (111)	34.1 (141)	39.1 (166)	43.5 (177)	51 (187)			
0.039 (0.99)	61	17	83	81	74	69	48	41	14.6 (55.5)	20.4 (77.8)	28.6 (113)	34.8 (145)	40.1 (170)	44.6 (182)	52.6 (192)			
0.035 (0.89)	65	19	71	72	65	58	39	33	14.7 (56)	20.8 (79.3)	29.4 (116)	36 (150)	41.6 (177)	46.5 (189)	55 (201)			
0.04 (1.02)	60	17	83	82	74	70	49	42	14.9 (56.9)	20.9 (79.7)	29.3 (116)	35.7 (148)	41.1 (175)	45.8 (186)	54 (197)			
0.036 (0.91)	64	19	72	73	66	58	40	33	15.2 (58.2)	21.6 (82.2)	30.5 (120)	37.4 (155)	43.1 (184)	48.2 (197)	57.1 (209)			
0.026 (0.66)	71	27	47	47	41	34	22	18	15.2 (58.1)	21.2 (80.8)	29.5 (116)	35.8 (148)	41.1 (174)	45.7 (186)	53.6 (196)			
0.041 (1.04)	59	17	84	82	75	71	49	42	15.5 (59)	21.7 (82.8)	30.4 (120)	37.1 (154)	42.7 (182)	47.6 (194)	56.1 (205)			
0.031 (0.79)	68	21	62	62	54	46	31	27	15.5 (59)	21.6 (82.4)	30.1 (119)	36.6 (152)	42.1 (178)	46.8 (190)	56 (201)			
0.042 (1.07)	58	17	85	82	76	71	50	43	15.7 (60.1)	22.1 (84.3)	31 (122)	37.8 (157)	43.5 (185)	48.5 (198)	57.2 (209)			

\* Based on spraying water at 70°F (21°C)

NOTE: In the tabulation, the psi and bar values are not direct conversions of each other. Also, the GPH and LPH values are not direct conversions of each other.

# SK SPRAYDRY® NOZZLES PERFORMANCE DATA

Orifice Insert		Core Size No.	Spray Angle						Water Capacity – GPH Gallons Per Hour (LPH Liters Per Hour)*									
Dia. (mm)	Size No.		"A"		"B" At 12 Inches (30.5cm) Spray Distance				500 psi (35 bar)	1000 psi (70 bar)	2000 psi (140 bar)	3000 psi (207 bar)	500 psi (35 bar)	1000 psi (70 bar)	2000 psi (150 bar)	3000 psi (250 bar)	4000 psi (350 bar)	5000 psi (400 bar)
0.037 (0.94)	63	19	73	74	66	59	40	34	15.7 (59.9)	22.2 (84.8)	31.4 (124)	38.5 (160)	44.5 (190)	49.7 (203)	58.8 (215)			
0.043 (1.09)	57	17	86	84	76	72	50	43	16 (61.1)	22.5 (85.8)	31.6 (125)	38.5 (160)	44.4 (189)	49.5 (201)	58.3 (213)			
0.032 (0.81)	67	21	63	63	55	47	32	27	16.3 (62.3)	22.8 (86.9)	31.8 (125)	38.7 (160)	44.4 (189)	49.5 (201)	58.2 (213)			
0.038 (0.97)	62	19	73	75	67	59	41	34	16.4 (62.7)	23.2 (88.6)	32.9 (130)	40.3 (167)	46.5 (198)	52 (212)	61.5 (225)			
0.033 (0.84)	66	21	64	64	55	48	32	28	16.7 (63.6)	23.3 (88.9)	32.5 (128)	39.6 (164)	45.5 (193)	50.6 (206)	59.5 (218)			
0.039 (0.99)	61	19	74	76	68	60	41	35	17.1 (65.2)	24.2 (92.3)	34.2 (135)	41.9 (174)	48.4 (206)	54.1 (221)	64 (234)			
0.035 (0.89)	65	21	66	66	57	49	33	29	17.2 (65.7)	24.1 (91.9)	33.7 (133)	41 (170)	47.1 (200)	52.5 (213)	61.8 (226)			
0.028 (0.71)	70	27	50	49	43	35	24	19	17.4 (66.2)	24.2 (92.3)	33.7 (133)	40.9 (170)	47 (199)	52.3 (212)	61.4 (225)			
0.04 (1.02)	60	19	75	77	68	61	41	35	17.5 (66.9)	24.8 (94.6)	35.1 (138)	43 (179)	49.6 (211)	55.4 (226)	65.6 (240)			
0.047 (1.19)	56	17	89	86	79	74	52	45	17.7 (67.5)	24.9 (95)	35 (138)	42.8 (178)	49.3 (210)	55 (224)	65 (238)			
0.041 (1.04)	59	19	76	77	69	61	42	36	18.2 (69.4)	25.7 (98.1)	36.4 (144)	44.6 (185)	51.4 (219)	57.5 (234)	68.1 (249)			
0.036 (0.91)	64	21	67	67	57	50	34	29	18.2 (69.2)	25.4 (96.9)	35.5 (140)	43.2 (179)	49.7 (211)	55.4 (225)	65.2 (239)			
0.029 (0.74)	69	27	51	51	43	36	24	19	18.2 (69.2)	25.3 (96.5)	35.3 (139)	42.8 (178)	49.2 (209)	54.7 (222)	64.3 (235)			
0.037 (0.94)	63	21	68	68	58	50	34	30	18.6 (71.1)	26.1 (99.5)	36.5 (144)	44.5 (185)	51.1 (217)	57 (232)	67.1 (245)			
0.042 (1.07)	58	19	77	78	69	62	42	36	18.7 (71.2)	26.4 (101)	37.4 (147)	45.8 (190)	52.8 (225)	59.1 (241)	69.9 (255)			
0.043 (1.09)	57	19	78	79	70	62	43	36	19.2 (73.2)	27.1 (103)	38.4 (151)	47 (196)	54.3 (231)	60.7 (247)	71.8 (262)			
0.031 (0.79)	68	27	53	53	45	37	25	20	19.5 (74.3)	27.2 (104)	38 (150)	46.1 (191)	53 (225)	58.9 (240)	69.3 (254)			
0.052 (1.32)	55	17	92	90	81	77	55	47	19.6 (74.9)	27.7 (106)	39.1 (154)	47.8 (198)	55.1 (235)	61.6 (251)	72.8 (266)			
0.038 (0.97)	62	21	69	69	59	51	35	30	19.8 (75.4)	27.8 (106)	38 (153)	47.2 (196)	54.3 (231)	60.5 (246)	71.3 (261)			
0.039 (0.99)	61	21	70	70	59	51	35	30	20.5 (78.1)	28.7 (109)	40.2 (159)	49 (203)	56.3 (240)	62.8 (256)	74 (271)			
0.032 (0.81)	67	27	54	54	45	38	26	20	20.6 (78.4)	28.75 (109)	40.1 (158)	48.7 (202)	55.9 (237)	62.3 (253)	73.2 (268)			
0.04 (1.02)	60	21	70	71	60	52	35	31	21 (80)	29.4 (112)	41.2 (163)	50.2 (209)	57.8 (246)	64.4 (262)	75.9 (278)			
0.047 (1.19)	56	19	81	81	72	64	44	38	21.4 (81.7)	30.3 (116)	42.9 (169)	52.5 (218)	60.6 (258)	67.8 (276)	80.2 (293)			
0.033 (0.84)	66	27	55	55	46	39	26	21	21.5 (81.9)	30 (114)	41.9 (165)	50.9 (211)	58.5 (249)	65.2 (265)	76.7 (281)			
0.041 (1.04)	59	21	71	72	60	52	36	31	21.7 (82.7)	30.4 (116)	42.6 (168)	52 (216)	59.8 (254)	66.7 (271)	78.6 (288)			
0.042 (1.07)	58	21	72	73	61	53	36	32	22.4 (85.3)	31.4 (120)	44.1 (174)	53.7 (223)	61.8 (263)	69 (281)	81.3 (297)			
0.035 (0.89)	65	27	57	57	47	40	27	22	22.6 (86.2)	31.6 (120)	44.2 (174)	53.8 (223)	61.8 (262)	68.8 (280)	81 (296)			
0.043 (1.09)	57	21	73	73	61	53	36	32	23.1 (88)	32.4 (124)	45.5 (179)	55.5 (230)	63.9 (272)	71.3 (290)	84 (307)			
0.036 (0.91)	64	27	58	58	48	41	28	22	23.5 (89.7)	32.9 (125)	46 (181)	56 (232)	64.4 (274)	71.7 (292)	84.4 (309)			

\* Based on spraying water at 70°F (21°C)

NOTE: In the tabulation, the psi and bar values are not direct conversions of each other. Also, the GPH and LPH values are not direct conversions of each other.





# SK SPRAYDRY® NOZZLES PERFORMANCE DATA

Orifice Insert		Core Size No.	Spray Angle						Water Capacity – GPH Gallons Per Hour (LPH Liters Per Hour)*									
Dia. (mm)	Size No.		"A"		"B" At 12 Inches (30.5cm) Spray Distance				500 psi (35 bar)	1000 psi (70 bar)	2000 psi (140 bar)	3000 psi (207 bar)	500 psi (35 bar)	1000 psi (70 bar)	2000 psi (150 bar)	3000 psi (250 bar)	4000 psi (350 bar)	5000 psi (400 bar)
0.052 (1.32)	55	19	84	85	74	66	46	39	24.3 (93)	34.4 (131)	48.7 (192)	59.6 (248)	68.8 (293)	76.9 (314)	91 (333)			
0.037 (0.94)	63	27	59	59	49	41	28	22	24.7 (94.3)	34.6 (132)	48.4 (191)	59 (245)	67.8 (288)	75.5 (307)	88.9 (325)			
0.038 (0.97)	62	27	60	60	49	42	28	23	25.5 (97.2)	35.7 (136)	50 (197)	60.9 (253)	70 (298)	78 (318)	91.9 (336)			
0.047 (1.19)	56	21	76	76	64	55	38	33	25.7 (98.1)	36.2 (138)	50.9 (201)	62.2 (258)	71.1 (305)	80 (326)	94.4 (345)			
0.039 (0.99)	61	27	61	61	50	42	29	23	26.3 (100)	36.8 (140)	51.6 (203)	62.8 (261)	72.2 (307)	80.5 (328)	94.9 (347)			
0.033 (0.84)	66	28	47	45	35	28	17	14	26.7 (102)	37.3 (142)	52.1 (205)	63.3 (263)	72.8 (309)	81 (330)	95.3 (349)			
0.04 (1.02)	60	27	62	62	50	43	29	23	27.3 (104)	38.3 (146)	53.7 (212)	65.4 (272)	75.3 (320)	83.9 (342)	98.9 (362)			
0.041 (1.04)	59	27	63	63	51	43	30	24	27.7 (106)	38.9 (148)	54.6 (215)	66.5 (276)	76.5 (325)	85.3 (347)	101 (368)			
0.042 (1.07)	58	27	64	64	52	44	30	24	28.9 (110)	40.6 (155)	57 (225)	69.5 (289)	80 (340)	89.2 (363)	105 (385)			
0.035 (0.89)	65	28	49	46	36	29	18	15	29.2 (111)	40.8 (156)	57 (225)	69.4 (288)	79.8 (339)	88.9 (361)	105 (383)			
0.052 (1.32)	55	21	79	80	66	58	39	35	29.3 (112)	41.4 (158)	58.4 (231)	71.4 (297)	82.4 (351)	92.1 (375)	109 (398)			
0.043 (1.09)	57	27	64	64	52	44	30	24	29.5 (112)	41.5 (158)	58.1 (229)	70.9 (294)	81.5 (347)	91 (371)	107 (393)			
0.036 (0.91)	64	28	50	47	37	30	18	15	30.1 (115)	42.1 (161)	58.9 (232)	71.7 (297)	82.4 (350)	91.8 (373)	108 (395)			
0.037 (0.94)	63	28	51	48	38	30	18	16	31.4 (120)	44 (168)	61.6 (243)	75 (311)	86.2 (366)	96.1 (391)	113 (414)			
0.055 (1.4)	54	21	81	81	67	59	40	36	31.9 (122)	45.1 (172)	63.8 (252)	78.1 (325)	90.2 (385)	101 (411)	119 (436)			
0.038 (0.97)	62	28	52	49	38	31	19	16	32.8 (125)	46 (175)	64.4 (254)	78.4 (326)	90.2 (383)	101 (409)	118 (433)			
0.047 (1.19)	56	27	67	67	54	46	32	25	33 (126)	46.5 (177)	65.4 (258)	79.9 (332)	92.1 (392)	103 (419)	121 (444)			
0.039 (0.99)	61	28	52	49	39	31	19	16	33.5 (128)	46.9 (179)	65.7 (259)	80 (332)	92.1 (391)	103 (418)	121 (442)			
0.06 (1.52)	53	21	83	84	69	61	41	37	34.2 (130)	48.3 (184)	68.3 (270)	83.7 (348)	96.6 (412)	108 (440)	128 (467)			
0.04 (1.02)	60	28	53	50	40	32	19	17	34.7 (132)	48.6 (185)	68.1 (269)	83 (345)	95.5 (406)	106 (433)	125 (459)			
0.041 (1.04)	59	28	54	51	40	32	20	17	36 (137)	50.5 (193)	70.8 (279)	86.3 (359)	99.4 (422)	111 (451)	131 (478)			
0.064 (1.63)	52	21	85	86	71	62	42	38	37 (141)	52.3 (200)	74 (292)	90.6 (377)	105 (446)	117 (477)	138 (506)			
0.042 (1.07)	58	28	55	52	41	33	20	17	37.6 (143)	52.7 (201)	74 (292)	90.2 (374)	104 (441)	116 (471)	136 (499)			
0.052 (1.32)	55	27	71	71	56	49	33	27	38.1 (145)	53.8 (205)	75.9 (300)	92.8 (386)	107 (456)	120 (488)	141 (517)			
0.043 (1.09)	57	28	55	53	41	33	20	17	38.6 (147)	54.2 (207)	76.1 (300)	92.8 (386)	107 (455)	119 (485)	141 (514)			
0.067 (1.7)	51	21	87	87	72	63	43	39	40.4 (154)	57.2 (218)	80.9 (319)	99.1 (412)	114 (488)	128 (522)	151 (553)			
0.055 (1.4)	54	27	73	73	58	50	34	27	40.9 (156)	57.9 (221)	81.9 (323)	100 (417)	116 (494)	129 (528)	153 (560)			
0.07 (1.78)	50	21	88	88	73	64	44	39	41.6 (159)	58.8 (224)	83.2 (328)	102 (424)	118 (501)	131 (536)	156 (569)			
0.073 (1.85)	49	21	90	89	74	65	44	40	43.6 (167)	61.6 (254)	87.1 (341)	107 (439)	123 (518)	138 (554)	163 (587)			

\* Based on spraying water at 70°F (21°C)

NOTE: In the tabulation, the psi and bar values are not direct conversions of each other. Also, the GPH and LPH values are not direct conversions of each other.

# SK SPRAYDRY® NOZZLES SPECIFICATIONS

Orifice Insert		Core Size No.	Spray Angle						Water Capacity – GPH Gallons Per Hour (LPH Liters Per Hour)*						
Dia. (mm)	Size No.		"A"		"B" At 12 Inches (30.5cm) Spray Distance				500 psi (35 bar)	1000 psi (70 bar)	2000 psi (150 bar)	3000 psi (250 bar)	4000 psi (350 bar)	5000 psi (400 bar)	7000 psi (450 bar)
			500 psi (35 bar)	1000 psi (70 bar)	500 psi (35 bar)	1000 psi (70 bar)	2000 psi (140 bar)	3000 psi (207 bar)							
0.06 (1.52)	53	27	76	76	59	52	35	29	43.7 (167)	61.8 (236)	87.4 (345)	107 (445)	124 (527)	138 (563)	164 (598)
0.047 (1.19)	56	28	58	56	44	35	22	18	43.7 (166)	61.5 (235)	86.5 (344)	106 (444)	122 (525)	136 (562)	160 (596)
0.076 (1.93)	48	21	91	90	75	66	45	41	45.6 (174)	64.5 (246)	91.2 (360)	112 (465)	129 (550)	144 (588)	171 (624)
0.064 (1.63)	52	27	78	78	61	53	36	29	47.9 (183)	67.8 (259)	95.9 (379)	117 (489)	136 (578)	152 (618)	179 (656)
0.052 (1.32)	55	28	61	60	46	37	23	19	51 (194)	71.9 (274)	101 (400)	124 (516)	143 (610)	160 (652)	189 (691)
0.067 (1.7)	51	27	79	80	62	54	37	30	51.6 (197)	73 (278)	103 (408)	126 (526)	146 (623)	163 (666)	193 (706)
0.055 (1.4)	54	28	63	62	48	38	24	20	53.7 (205)	75.9 (290)	107 (424)	131 (547)	152 (647)	170 (692)	201 (734)
0.07 (1.78)	50	27	81	81	63	55	38	31	54.5 (208)	77 (294)	109 (430)	133 (555)	154 (657)	172 (702)	204 (745)
0.073 (1.85)	49	27	82	82	64	56	38	31	58.1 (222)	82.2 (314)	116 (459)	142 (593)	164 (701)	184 (749)	217 (795)
0.06 (1.52)	53	28	65	65	50	39	25	21	60.5 (231)	85.5 (326)	121 (477)	148 (616)	171 (729)	191 (780)	226 (827)
0.076 (1.93)	48	27	84	83	65	57	39	32	61 (232)	86.2 (329)	122 (481)	149 (621)	172 (735)	193 (786)	228 (834)
0.081 (2.06)	46	27	86	84	66	58	40	32	66 (252)	93.4 (356)	132 (521)	162 (673)	187 (797)	209 (852)	247 (903)
0.064 (1.63)	52	28	67	67	52	40	26	21	66.5 (254)	94.1 (359)	133 (525)	163 (678)	188 (803)	210 (858)	249 (910)
0.086 (2.18)	44	27	88	85	68	59	41	33	70.7 (270)	100 (381)	141 (558)	173 (721)	200 (853)	224 (912)	265 (967)
0.067 (1.7)	51	28	69	69	53	41	26	22	72.8 (278)	103 (393)	146 (575)	178 (742)	206 (878)	230 (939)	273 (996)
0.093 (2.36)	42	27	90	87	69	61	42	34	75.7 (289)	107 (408)	151 (597)	185 (771)	214 (913)	239 (976)	283 (1030)
0.07 (1.78)	50	28	70	70	54	42	27	22	75.7 (289)	107 (409)	151 (597)	185 (771)	214 (913)	239 (976)	283 (1030)
0.098 (2.49)	40	27	92	87	70	62	43	35	79.9 (305)	113 (431)	160 (631)	196 (815)	226 (964)	253 (1030)	299 (1090)
0.073 (1.85)	49	28	71	71	55	43	28	23	79.9 (305)	113 (432)	160 (631)	196 (815)	226 (964)	253 (1030)	299 (1090)
0.076 (1.93)	48	28	73	72	56	44	28	23	84.9 (324)	120 (458)	170 (670)	208 (865)	240 (1023)	268 (1094)	317 (1160)
0.081 (2.06)	46	28	75	74	58	45	29	24	91.2 (348)	129 (492)	182 (720)	223 (930)	258 (1100)	288 (1170)	341 (1240)
0.086 (2.18)	44	28	76	75	59	46	30	25	96.9 (369)	137 (523)	194 (765)	237 (988)	274 (1160)	306 (1240)	362 (1320)
0.093 (2.36)	42	28	79	77	61	47	31	25	104 (396)	147 (561)	208 (821)	255 (1050)	294 (1250)	329 (1340)	389 (1420)
0.098 (2.49)	40	28	80	77	62	48	32	26	107 (407)	151 (567)	214 (843)	262 (1080)	302 (1280)	338 (1370)	400 (1460)

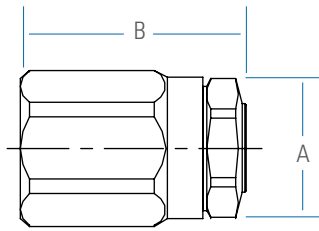
\* Based on spraying water at 70°F (21°C)

NOTE: In the tabulation, the psi and bar values are not direct conversions of each other. Also, the GPH and LPH values are not direct conversions of each other.



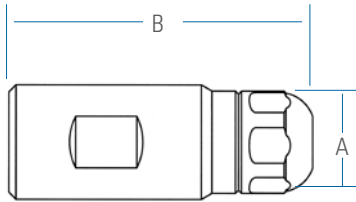
# SK SPRAYDRY® NOZZLES SPECIFICATIONS

## DIMENSIONS & WEIGHTS



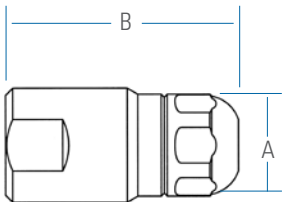
### SK AND SK-MFP SPRAYDRY NOZZLES

Inlet Conn. NPT/BSPT (F)	A Dia. in. (mm)	B Length in. (mm)	Net Weight oz (kg)
1/4	1.00 (25.4)	1.56 (39.7)	5.0 (.14)
3/8	1.00 (25.4)	1.75 (44.5)	5.5 (.15)
1/2	1.00 (25.4)	2.00 (50.8)	5.8 (.16)



### SKH-MFP SPRAYDRY NOZZLES

Inlet Conn. NPT/BSPT (F)	A Dia. in. (mm)	B Length in. (mm)	Net Weight oz (kg)
1/4, 3/8	1.12 (28.4)	2.99 (75.9)	12 (.34)
1/2	1.12 (28.4)	3.07 (78.0)	14 (.40)



### SKHN-MFP SPRAYDRY NOZZLES (OPTION WITHOUT CHECK VALVE)

Inlet Conn. NPT/BSPT (F)	A Dia. in. (mm)	B Length in. (mm)	Net Weight oz (kg)
1/4, 3/8	1.12 (28.4)	2.29 (58.2)	8 (.23)
1/2	1.12 (28.4)	2.45 (62.2)	10 (.28)

## CORE SIZES

### SK

Core Size No.	Number of Slots	Nominal Slot Width (mm)
16	2	.016" (.41)
17	4	.016" (.41)
20	2	.020" (.51)
21	4	.020" (.51)
27	4	.025" (.64)
28	6	.025" (.64)

### SKH-MFP AND SK-MFP

Core Size No.	Number of Slots	Nominal Slot Width (mm)
16	2	.016" (.41)
17	2	.022" (.56)
20	2	.020" (.51)
21	2	.035" (.89)
27	3	.032" (.81)
28	4	.035" (.89)

Note: CP50165-SS cap must be used with the MFP cores in the SK-MFP.

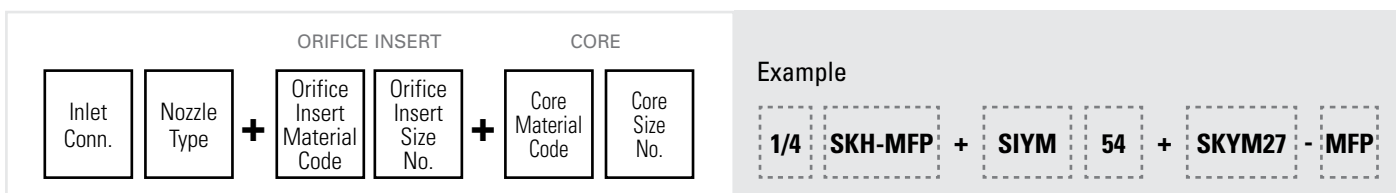
## MATERIALS

### ORIFICE INSERT / CORE MATERIAL CODE

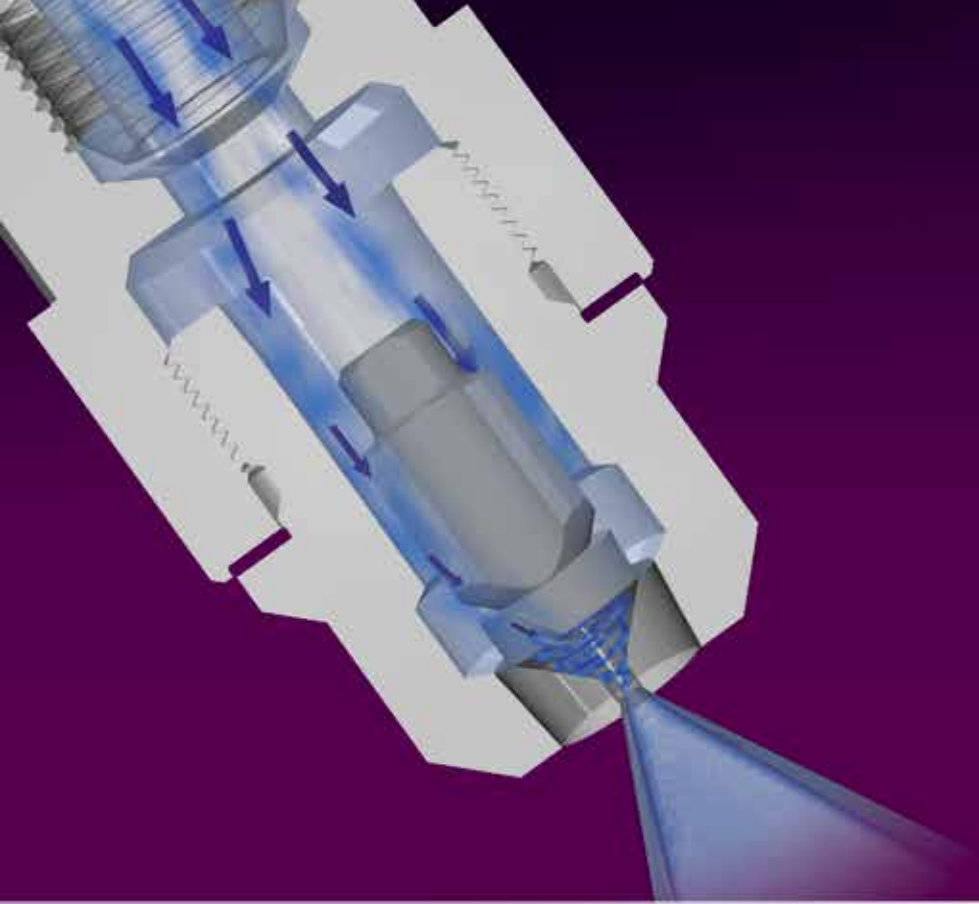
Material	Orifice Insert Material Code	Core Material Code
Hardened Stainless Steel	SIA	SKA SKA-MFP
Tungsten Carbide Y Type	SIY	SKY SKY-MFP
Tungsten Carbide M Type	SIYM	SKYM SKYM-MFP

Note: Gaskets for SK and SK-MFP nozzles: fiber and PTFE with max. operating temp. of 300°F (150°C) and aluminum with max. operating temp. of 1000° F (540° C). O-rings for SKH-MFP are Viton® with max. operating temp. of 400°F (204°C) and PEEK™ with max. operating temp. of 480°F (249°C). High temperature versions available.

## ORDERING INFORMATION



Note: Only MFP cores can be used with SBH-MFP and SBHN-MFP. Orifice inserts and Cores can be ordered separately. Include material code and size no. as shown above.



## SB SPRAYDRY® NOZZLES



# SB SPRAYDRY® NOZZLES PERFORMANCE DATA

Orifice Insert		Core Size No. Flat Top (Cup Top)	Spray Angle						Water Capacity – GPH Gallons Per Hour (LPH Liters Per Hour)*						
Dia. (mm)	Size No.		"A"		"B" At 12 Inches (30.5cm) Spray Distance				500 psi (35 bar)	1000 psi (70 bar)	2000 psi (150 bar)	3000 psi (250 bar)	4000 psi (350 bar)	5000 psi (400 bar)	7000 psi (450 bar)
			500 psi (35 bar)	1000 psi (70 bar)	500 psi (35 bar)	1000 psi (70 bar)	2000 psi (140 bar)	3000 psi (207 bar)							
0.055 (1.40)	54	27 (425)	64	64	52	33	24	18	38.9 (148)	55 (210)	77.8 (307)	95.3 (396)	110 (469)	123 (501)	146 (532)
0.0595 (1.51)	53	27 (425)	69	69	55	36	26	21	42.9 (164)	60.7 (232)	85.8 (339)	105 (438)	121 (518)	136 (553)	161 (587)
0.0635 (1.61)	52	27 (425)	73	73	57	38	29	23	46.5 (177)	65.8 (251)	93.1 (367)	114 (474)	132 (561)	147 (600)	174 (636)
0.067 (1.70)	51	27 (425)	76	76	59	40	30	25	49.9 (190)	70.5 (269)	99.7 (394)	122 (508)	141 (601)	158 (643)	187 (682)
0.07 (1.78)	50	27 (425)	79	79	60	42	32	26	52.7 (201)	74.5 (284)	105 (416)	129 (537)	149 (635)	167 (679)	197 (720)
0.055 (1.40)	54	28 (625)	58	58	43	26	20	18	53.2 (203)	75.2 (287)	106 (420)	130 (542)	150 (641)	168 (686)	199 (727)
0.073 (1.85)	49	27 (425)	80	80	62	43	33	28	55.9 (213)	79 (301)	112 (441)	137 (569)	158 (674)	177 (720)	209 (764)
0.0595 (1.51)	53	28 (625)	63	63	45	28	22	20	58.3 (223)	82.5 (315)	117 (461)	143 (595)	165 (704)	184 (752)	218 (798)
0.076 (1.93)	48	27 (425)	82	82	63	45	35	29	58.8 (224)	83.2 (317)	118 (465)	144 (600)	166 (710)	186 (759)	220 (805)
0.055 (1.40)	54	32 (632)	50	50	32	22	18	14	62.6 (239)	88.6 (338)	125 (495)	153 (639)	177 (756)	198 (808)	234 (857)
0.0635 (1.61)	52	28 (625)	66	66	47	30	24	21	63 (240)	89.1 (340)	126 (497)	154 (642)	178 (760)	199 (812)	236 (862)
0.081 (2.06)	46	27 (425)	86	86	65	47	37	31	63.8 (243)	90.2 (344)	128 (504)	156 (650)	180 (769)	202 (822)	239 (872)
0.067 (1.70)	51	28 (625)	70	70	49	32	25	23	67.2 (256)	95.1 (363)	134 (531)	165 (685)	190 (811)	213 (867)	252 (920)
0.055 (1.40)	54	40 (640)	43	43	31	20	17	14	67.2 (256)	95 (362)	134 (530)	165 (685)	190 (810)	212 (866)	251 (919)
0.086 (2.18)	44	27 (425)	87	87	67	49	39	33	68.7 (262)	97.2 (371)	137 (543)	168 (701)	194 (829)	217 (886)	257 (940)
0.0595 (1.51)	53	32 (632)	54	54	35	24	20	16	69.3 (264)	98 (374)	139 (547)	170 (706)	196 (836)	219 (894)	259 (948)
0.07 (1.78)	50	28 (625)	73	73	50	33	27	24	70.7 (270)	100 (381)	141 (558)	173 (721)	200 (853)	224 (912)	265 (967)
0.0595 (1.51)	53	40 (640)	48	48	32	22	19	15	74.2 (283)	105 (400)	148 (586)	182 (757)	210 (896)	235 (957)	278 (1010)
0.073 (1.85)	49	28 (625)	75	75	51	34	28	25	75 (286)	106 (404)	150 (592)	184 (764)	212 (904)	237 (966)	280 (1020)
0.0635 (1.61)	52	32 (632)	58	58	37	26	21	17	75.7 (289)	107 (408)	151 (597)	185 (771)	214 (913)	239 (976)	283 (1030)
0.055 (1.40)	54	45 (645)	37	37	26	17	16	13	75.7 (289)	107.01 (409)	151 (597)	185 (771)	214 (913)	239 (976)	283 (1030)
0.094 (2.39)	42	27 (425)	91	91	70	53	42	36	76.4 (291)	108 (412)	153 (603)	187 (778)	216 (921)	241 (985)	286 (1040)
0.076 (1.93)	48	28 (625)	76	76	52	35	29	26	78.5 (299)	111 (423)	157 (620)	192 (800)	222 (947)	248 (1010)	294 (1070)
0.098 (2.49)	40	27 (425)	92	92	72	54	43	37	80.6 (307)	114 (435)	161 (637)	197 (822)	228 (972)	255 (1030)	302 (1100)
0.067 (1.70)	51	32 (632)	61	61	38	27	22	18	81.3 (310)	115 (439)	163 (642)	199 (829)	230 (981)	257 (1040)	304 (1110)
0.0635 (1.61)	52	40 (640)	52	52	34	23	20	17	82 (313)	116 (442)	164 (648)	201 (836)	232 (989)	259 (1050)	307 (1120)
0.055 (1.40)	54	50 (650)	34	34	23	17	14	13	82 (313)	116.01 (423)	164 (648)	201 (836)	232 (989)	259 (1050)	307 (1120)
0.104 (2.64)	37	27 (425)	94	94	74	57	46	39	82.7 (316)	117 (446)	165 (653)	203 (843)	234 (998)	262 (1060)	310 (1130)
0.11 (2.79)	35	27 (425)	96	96	76	59	47	41	84.9 (324)	120 (458)	170 (670)	208 (865)	240 (1020)	268 (1090)	317 (1160)
0.081 (2.06)	46	28 (625)	78	78	54	36	31	27	84.9 (324)	120.01 (459)	170 (670)	208 (865)	240 (1020)	268 (1090)	317 (1160)

\* Based on spraying water at 70°F (21°C)

NOTE: In the tabulation, the psi and bar values are not direct conversions of each other. Also, the GPH and LPH values are not direct conversions of each other.





# SB SPRAYDRY® NOZZLES PERFORMANCE DATA

Orifice Insert		Core Size No. Flat Top (Cup Top)	Spray Angle						Water Capacity – GPH Gallons Per Hour (LPH Liters Per Hour)*						
Dia. (mm)	Size No.		"A"		"B" At 12 Inches (30.5cm) Spray Distance				500 psi (35 bar)	1000 psi (70 bar)	2000 psi (150 bar)	3000 psi (250 bar)	4000 psi (350 bar)	5000 psi (400 bar)	7000 psi (450 bar)
			500 psi (35 bar)	1000 psi (70 bar)	500 psi (35 bar)	1000 psi (70 bar)	2000 psi (140 bar)	3000 psi (207 bar)							
0.0595 (1.51)	53	45 (645)	41	41	27	18	17	14	85.6 (326)	121 (462)	171 (676)	210 (872)	242 (1030)	271 (1100)	320 (1170)
0.07 (1.78)	50	32 (632)	65	65	40	28	23	19	86.3 (329)	122 (465)	173 (681)	211 (879)	244 (1040)	273 (1110)	323 (1170)
0.116 (2.95)	32	27 (425)	98	98	78	61	49	42	88.4 (337)	125 (477)	177 (698)	217 (901)	250 (1060)	280 (1130)	331 (1200)
0.067 (1.70)	51	40 (640)	56	56	35	24	21	18	88.4 (337)	125.01 (478)	177 (698)	217 (901)	250 (1060)	280 (1130)	331 (1200)
0.086 (2.18)	44	28 (625)	80	80	56	38	32	29	91.2 (348)	129 (492)	182 (720)	223 (930)	258 (1100)	288 (1170)	341 (1240)
0.073 (1.85)	49	32 (632)	67	67	41	29	23	20	91.9 (351)	130 (496)	184 (726)	225 (937)	260 (1100)	291 (1180)	344 (1250)
0.12 (3.05)	31	27 (425)	99	99	79	62	50	43	92.6 (353)	131 (500)	185 (731)	227 (944)	262 (1110)	293 (1190)	347 (1260)
0.0595 (1.51)	53	50 (650)	38	38	24	18	16	14	92.6 (353)	131.01 (501)	185 (731)	227 (944)	262 (1110)	293 (1190)	347 (1260)
0.07 (1.78)	50	40 (640)	59	59	36	25	21	18	94 (359)	133 (507)	188 (743)	230 (959)	266 (1130)	297 (1210)	352 (1280)
0.0635 (1.61)	52	45 (645)	45	45	29	20	18	15	94.8 (361)	134 (511)	190 (748)	232 (966)	268 (1140)	300 (1220)	355 (1290)
0.076 (1.93)	48	32 (632)	69	69	42	30	24	21	96.9 (369)	137 (523)	194 (765)	237 (988)	274 (1160)	306 (1240)	362 (1320)
0.129 (3.28)	30	27 (425)	101	101	81	65	53	46	98.3 (375)	139 (530)	197 (776)	241 (1000)	278 (1180)	311 (1260)	368 (1340)
0.073 (1.85)	49	40 (640)	61	61	37	26	22	19	100 (383)	142 (542)	201 (793)	246 (1020)	284 (1210)	318 (1290)	376 (1370)
0.094 (2.39)	42	28 (625)	83	83	58	40	35	31	101 (386)	143 (545)	202 (798)	248 (1030)	286 (1210)	320 (1300)	378 (1380)
0.0635 (1.61)	52	50 (650)	41	41	25	19	16	15	103 (394)	146 (557)	206 (815)	253 (1050)	292 (1240)	326 (1330)	386 (1410)
0.081 (2.06)	46	32 (632)	70	70	44	31	25	22	105 (402)	149 (568)	211 (832)	258 (1070)	298 (1270)	333 (1350)	394 (1440)
0.136 (3.45)	29	27 (425)	103	103	83	67	55	47	106 (405)	150 (572)	212 (838)	260 (1080)	300 (1270)	355 (1360)	397 (1450)
0.076 (1.93)	48	40 (640)	62	62	38	27	23	20	106 (405)	150.01 (573)	212 (838)	260 (1080)	300 (1270)	335 (1360)	397 (1450)
0.098 (2.49)	40	28 (625)	84	84	60	41	36	32	107 (410)	152 (580)	215 (849)	263 (1090)	304 (1290)	340 (1380)	402 (1460)
0.07 (1.78)	50	45 (645)	49	49	30	22	20	17	111 (423)	157 (599)	222 (877)	272 (1130)	314 (1330)	351 (1430)	415 (1510)
0.104 (2.64)	37	28 (625)	86	86	61	43	37	34	112 (426)	158 (603)	223 (882)	274 (1130)	316 (1340)	353 (1440)	418 (1520)
0.086 (2.18)	44	32 (632)	73	73	46	32	27	24	114 (434)	161 (614)	228 (899)	279 (1160)	322 (1370)	360 (1460)	426 (1550)
0.067 (1.70)	51	50 (650)	44	44	26	20	17	16	114 (434)	161.01 (615)	228 (899)	279 (1160)	322 (1370)	360 (1460)	426 (1550)
0.144 (3.66)	27	27 (425)	105	105	85	69	57	49	115 (440)	163 (622)	231 (910)	282 (1170)	326 (1390)	364 (1480)	431 (1570)
0.081 (2.06)	46	40 (640)	65	65	39	28	24	21	116 (442)	164 (626)	232 (916)	284 (1180)	328 (1390)	367 (1490)	434 (1580)
0.11 (2.79)	35	28 (625)	88	88	63	44	39	35	117 (448)	166 (633)	235 (927)	288 (1190)	332 (1410)	371 (1510)	439 (1600)
0.073 (1.85)	49	45 (645)	53	53	31	22	20	18	119 (453)	168 (641)	238 (938)	291 (1210)	336 (1430)	376 (1530)	444 (1620)
0.07 (1.78)	50	50 (650)	46	46	27	20	18	17	120 (458)	170 (648)	240 (949)	294 (1220)	340 (1440)	380 (1550)	450 (1640)
0.152 (3.86)	24	27 (425)	107	107	87	71	59	51	122 (467)	173 (660)	245 (966)	300 (1240)	346 (1470)	387 (1570)	458 (1670)
0.116 (2.95)	32	28 (625)	90	90	64	46	40	37	122 (464)	172 (656)	243 (960)	298 (1230)	344 (1460)	385 (1560)	455 (1600)

\* Based on spraying water at 70°F (21°C)

NOTE: In the tabulation, the psi and bar values are not direct conversions of each other. Also, the GPH and LPH values are not direct conversions of each other.



# SB SPRAYDRY® NOZZLES PERFORMANCE DATA

Orifice Insert		Core Size No. Flat Top (Cup Top)	Spray Angle						Water Capacity – GPH Gallons Per Hour (LPH Liters Per Hour)*						
Dia. (mm)	Size No.		"A"		"B" At 12 Inches (30.5cm) Spray Distance				500 psi (35 bar)	1000 psi (70 bar)	2000 psi (150 bar)	3000 psi (250 bar)	4000 psi (350 bar)	5000 psi (400 bar)	7000 psi (450 bar)
			500 psi (35 bar)	1000 psi (70 bar)	500 psi (35 bar)	1000 psi (70 bar)	2000 psi (140 bar)	3000 psi (207 bar)							
0.086 (2.18)	44	40 (640)	67	67	41	29	25	22	126 (480)	178 (679)	252 (994)	308 (1280)	356 (1510)	398 (1620)	471 (1720)
0.12 (3.05)	31	28 (625)	90	90	65	47	41	37	127 (483)	179 (683)	253 (999)	310 (1290)	358 (1520)	400 (1630)	474 (1730)
0.094 (2.39)	42	32 (632)	75	75	48	34	28	25	127 (485)	180 (687)	255 (1000)	312 (1290)	360 (1530)	402 (1640)	476 (1740)
0.076 (1.93)	48	45 (645)	56	56	32	23	21	18	127 (483)	179.01 (684)	253 (999)	310 (1290)	358 (1520)	400 (1630)	474 (1730)
0.073 (1.85)	49	50 (650)	48	48	27	21	18	17	129 (491)	182 (694)	257 (1010)	315 (1310)	364 (1550)	407 (1650)	482 (1760)
0.161 (4.09)	20	27 (425)	109	109	89	73	61	53	132 (504)	187 (713)	264 (1040)	324 (1340)	374 (1590)	418 (1700)	495 (1800)
0.129 (3.28)	30	28 (625)	93	93	68	48	43	39	136 (518)	192 (732)	272 (1070)	333 (1380)	384 (1630)	429 (1750)	508 (1850)
0.098 (2.49)	40	32 (632)	77	77	50	35	29	26	136 (521)	193 (736)	273 (1070)	334 (1390)	386 (1640)	432 (1750)	511 (1860)
0.076 (1.93)	48	50 (650)	49	49	28	22	19	18	136 (521)	193.01 (738)	273 (1070)	334 (1390)	386 (1640)	432 (1750)	511 (1860)
0.094 (2.39)	42	40 (640)	70	70	43	31	27	24	141 (537)	199 (759)	281 (1110)	345 (1430)	398 (1690)	445 (1810)	527 (1920)
0.081 (2.06)	46	45 (645)	58	58	33	24	22	19	141 (537)	199.01 (761)	281 (1110)	345 (1430)	398 (1690)	445 (1810)	527 (1920)
0.104 (2.64)	37	32 (632)	79	79	51	37	30	28	143 (545)	202 (770)	286 (1120)	350 (1450)	404 (1720)	452 (1840)	534 (1950)
0.136 (3.45)	29	28 (625)	96	96	69	50	45	41	146 (558)	206 (786)	291 (1150)	357 (1480)	412 (1750)	461 (1870)	545 (1990)
0.11 (2.79)	35	32 (632)	81	81	53	38	31	29	148 (564)	209 (797)	296 (1160)	362 (1500)	418 (1780)	467 (1900)	553 (2020)
0.081 (2.06)	46	50 (650)	51	51	29	23	20	19	150 (572)	212 (809)	300 (1180)	367 (1520)	424 (1800)	474 (1930)	561 (2050)
0.098 (2.49)	40	40 (640)	72	72	43	32	27	24	152 (580)	215 (820)	304 (1200)	372 (1540)	430 (1830)	481 (1960)	569 (2070)
0.116 (2.95)	32	32 (632)	82	82	55	39	32	30	154 (588)	218 (831)	308 (1210)	378 (1570)	436 (1850)	487 (1980)	577 (2100)
0.086 (2.18)	44	45 (645)	61	61	34	26	23	20	154 (588)	218.05 (833)	308 (1210)	378 (1570)	436 (1850)	487 (1980)	577 (2100)
0.144 (3.66)	27	28 (625)	97	97	71	51	46	42	158 (601)	223 (851)	315 (1240)	386 (1600)	446 (1900)	499 (2030)	590 (2150)
0.12 (3.05)	31	32 (632)	83	83	56	40	33	30	161 (615)	228 (870)	322 (1270)	395 (1640)	456 (1940)	510 (2070)	603 (2200)
0.104 (2.64)	37	40 (640)	74	74	45	33	28	25	163 (623)	231 (881)	327 (1280)	400 (1660)	462 (1970)	517 (2100)	611 (2230)
0.086 (2.18)	44	50 (650)	54	54	30	24	21	19	167 (637)	236 (900)	334 (1310)	409 (1700)	472 (2010)	528 (2150)	624 (2280)
0.152 (3.86)	24	28 (625)	99	99	72	53	48	43	170 (647)	240 (915)	339 (1340)	416 (1720)	480 (2040)	537 (2180)	635 (2320)
0.11 (2.79)	35	40 (640)	75	75	46	34	29	26	170 (650)	241 (919)	341 (1340)	417 (1730)	482 (2050)	539 (2190)	638 (2330)
0.094 (2.39)	42	45 (645)	64	64	35	27	25	22	175 (666)	247 (942)	349 (1370)	428 (1780)	494 (2100)	552 (2250)	654 (2380)
0.129 (3.28)	30	32 (632)	85	85	58	41	34	32	180 (688)	255 (973)	361 (1420)	442 (1830)	510 (2170)	570 (2320)	675 (2460)
0.116 (2.95)	32	40 (640)	76	76	47	35	30	27	184 (701)	260 (992)	368 (1450)	450 (1870)	520 (2210)	581 (2370)	688 (2510)
0.161 (4.09)	20	28 (625)	101	101	74	54	49	45	186 (709)	263 (1000)	372 (1460)	456 (1890)	526 (2240)	588 (2390)	696 (2540)
0.094 (2.39)	42	50 (650)	56	56	31	25	22	20	188 (717)	266 (1010)	376 (1480)	461 (1910)	532 (2260)	595 (2420)	704 (2570)
0.098 (2.49)	40	45 (645)	66	66	36	28	25	23	190 (726)	269 (1020)	380 (1500)	466 (1930)	538 (2290)	602 (2450)	712 (2600)

\* Based on spraying water at 70°F (21°C)

NOTE: In the tabulation, the psi and bar values are not direct conversions of each other. Also, the GPH and LPH values are not direct conversions of each other.



# SB SPRAYDRY® NOZZLES PERFORMANCE DATA

Orifice Insert		Core Size No. Flat Top (Cup Top)	Spray Angle						Water Capacity – GPH Gallons Per Hour (LPH Liters Per Hour)*							
Dia. (mm)	Size No.		"A"		"B" At 12 Inches (30.5cm) Spray Distance				500 psi	1000 psi	2000 psi	3000 psi	4000 psi	5000 psi	7000 psi	
			500 psi (35 bar)	1000 psi (70 bar)	500 psi (35 bar)	1000 psi (70 bar)	2000 psi (140 bar)	3000 psi (207 bar)	500 psi (35 bar)	1000 psi (70 bar)	2000 psi (150 bar)	3000 psi (250 bar)	4000 psi (350 bar)	5000 psi (400 bar)	7000 psi (450 bar)	
0.136 (3.45)	29	32 (632)	87	87	59	43	35	33	194 (742)	275 (1040)	389 (1530)	476 (1980)	550 (2340)	615 (2500)	728 (2650)	
0.12 (3.05)	31	40 (640)	78	78	48	36	31	28	194 (742)	275.01 (1045)	389 (1530)	476 (1980)	550 (2340)	615 (2500)	728 (2650)	
0.098 (2.49)	40	50 (650)	58	58	32	26	22	21	204 (777)	288 (1090)	407 (1600)	499 (2070)	576 (2450)	644 (2620)	762 (2780)	
0.104 (2.64)	37	45 (645)	68	68	37	29	26	24	206 (785)	291 (1100)	412 (1620)	504 (2090)	582 (2480)	651 (2650)	770 (2810)	
0.144 (3.66)	27	32 (632)	89	89	61	44	36	34	213 (812)	301 (1140)	426 (1680)	521 (2160)	602 (2560)	673 (2740)	796 (2910)	
0.129 (3.28)	30	40 (640)	80	80	50	37	32	29	215 (820)	304 (1150)	430 (1690)	527 (2190)	608 (2590)	680 (2770)	804 (2930)	
0.11 (2.79)	35	45 (645)	70	70	38	31	27	25	215 (820)	304.1 (1155)	430 (1690)	527 (2190)	608 (2590)	680 (2770)	804 (2930)	
0.104 (2.64)	37	50 (650)	60	60	33	27	23	22	216 (825)	306 (1160)	433 (1700)	530 (2200)	612 (2600)	684 (2790)	810 (2950)	
0.152 (3.86)	24	32 (632)	90	90	63	45	37	35	228 (868)	322 (1220)	455 (1790)	558 (2320)	644 (2740)	720 (2930)	852 (3110)	
0.116 (2.95)	32	45 (645)	71	71	39	32	28	25	228 (868)	322.01 (1225)	455 (1790)	558 (2320)	644 (2740)	720 (2930)	852 (3110)	
0.11 (2.79)	35	50 (650)	62	62	33	28	24	23	229 (874)	324 (1230)	458 (1800)	561 (2330)	648 (2760)	724 (2950)	857 (3130)	
0.136 (3.45)	29	40 (640)	81	81	51	38	33	30	235 (895)	332 (1260)	470 (1850)	575 (2390)	664 (2830)	742 (3020)	878 (3210)	
0.12 (3.05)	31	45 (645)	72	72	40	32	29	26	242 (922)	342 (1300)	484 (1900)	592 (2460)	684 (2910)	765 (3110)	905 (3300)	
0.116 (2.95)	32	50 (650)	63	63	34	29	25	23	247 (947)	349 (1330)	494 (1950)	604 (2530)	698 (2990)	780 (3200)	923 (3390)	
0.161 (4.09)	20	32 (632)	92	92	64	46	38	36	248 (941)	351 (1335)	496 (1940)	608 (2510)	702 (2970)	785 (3180)	929 (3370)	
0.144 (3.66)	27	40 (640)	83	83	52	39	34	31	252 (963)	357 (1360)	505 (1990)	618 (2570)	714 (3040)	798 (3250)	945 (3450)	
0.12 (3.05)	31	50 (650)	64	64	35	29	25	24	260 (990)	367 (1390)	519 (2040)	636 (2640)	734 (3130)	821 (3340)	971 (3540)	
0.129 (3.28)	30	45 (645)	74	74	41	34	30	27	268 (1020)	379 (1440)	536 (2110)	656 (2730)	758 (3230)	847 (3450)	1003 (3660)	
0.152 (3.86)	24	40 (640)	85	85	53	40	35	32	270 (1030)	382 (1450)	540 (2130)	662 (2750)	764 (3250)	854 (3480)	1011 (3690)	
0.136 (3.45)	29	45 (645)	75	75	42	35	31	28	288 (1100)	408 (1550)	577 (2270)	707 (2940)	816 (3470)	912 (3720)	1079 (3940)	
0.129 (3.28)	30	50 (650)	66	66	36	30	26	25	290 (1100)	410 (1560)	580 (2280)	710 (2950)	820 (3490)	917 (3730)	1085 (3960)	
0.161 (4.09)	20	40 (640)	88	88	54	42	36	33	295 (1120)	417 (1590)	590 (2320)	722 (3000)	834 (3550)	932 (3800)	1103 (4030)	
0.136 (3.45)	29	50 (650)	67	67	37	31	27	25	312 (1180)	441 (1680)	624 (2460)	764 (2170)	882 (3760)	986 (4020)	1167 (4260)	
0.144 (3.66)	27	45 (645)	76	76	43	36	32	29	315 (1200)	446 (1700)	631 (2490)	772 (3210)	892 (3800)	997 (4060)	1180 (4310)	
0.144 (3.66)	27	50 (650)	68	68	38	32	28	26	339 (1290)	480 (1830)	679 (2680)	831 (3460)	960 (4100)	1073 (4380)	1270 (4650)	
0.152 (3.86)	24	45 (645)	78	78	44	37	33	30	340 (1290)	481 (1835)	680 (2680)	833 (3450)	962 (4090)	1076 (4370)	1273 (4640)	
0.152 (3.86)	24	50 (650)	70	70	38	33	29	27	366 (1390)	517 (1970)	731 (2580)	895 (3720)	1034 (4400)	1156 (4710)	1368 (4990)	
0.161 (4.09)	20	45 (645)	79	79	45	38	34	31	368 (1400)	521 (1980)	737 (2900)	902 (3750)	1042 (4440)	1165 (4750)	1378 (5030)	
0.161 (4.09)	20	50 (650)	71	71	39	34	29	28	403 (1530)	570 (2170)	806 (3180)	987 (4100)	1140 (4860)	1275 (5190)	1508 (5510)	

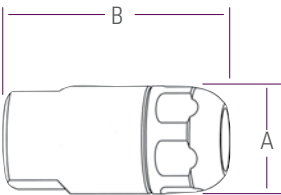
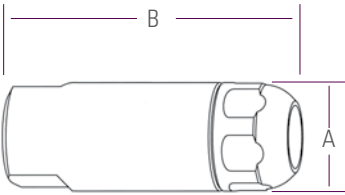
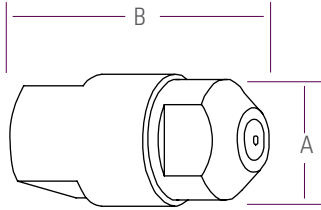
\* Based on spraying water at 70°F (21°C)

NOTE: In the tabulation, the psi and bar values are not direct conversions of each other. Also, the GPH and LPH values are not direct conversions of each other.



# SB SPRAYDRY® NOZZLES SPECIFICATIONS

## DIMENSIONS & WEIGHTS



### SB AND SB-MFP SPRAYDRY NOZZLES

Inlet Conn. NPT/BSPT (F)	A Dia. in. (mm)	B Length in. (mm)	Net Weight oz (kg)
1/4, 3/8, 1/2	1.50 (38.1)	2.50 (63.5)	1.0 (.40)

### SBH-MFP SPRAYDRY NOZZLES

Inlet Conn. NPT/BSPT (F)	A Dia. in. (mm)	B Length in. (mm)	Net Weight oz (kg)
3/8	1.49 (37.8)	4.01 (101.9)	1.6 (.73)
1/2	1.49 (37.8)	4.17 (105.9)	1.7 (.77)

### SBHN-MFP SPRAYDRY NOZZLES (OPTION WITHOUT CHECK VALVE)

Inlet Conn. NPT/BSPT (F)	A Dia. in. (mm)	B Length in. (mm)	Net Weight oz (kg)
1/4, 3/8	1.49 (37.8)	3.03 (77.0)	1.2 (.54)
1/2	1.49 (37.8)	3.10 (78.8)	1.2 (.54)

## CORE SIZES

### SB— FLAT TOP / CUP TOP

Core Size No.		Number of Slots	Nominal Slot Width (mm)
Flat Top	Cup Top		
27	425	4	0.025" (0.635)
28	625	6	0.025" (0.635)
32	632	6	0.032" (0.813)
40	640	6	0.042" (1.02)
45	645	6	0.045" (1.14)
50	650	6	0.051" (1.29)

### SB-MFP AND SBH-MFP — FLAT TOP / CUP TOP

Core Size No.		Number of Slots	Nominal Slot Width (mm)
Flat Top	Cup Top		
27	425	2	0.057" (1.45)
28	625	3	0.057" (1.45)
32	632	3	0.066" (1.68)
40	640	3	0.071" (1.80)
45	645	3	0.078" (1.98)
50	650	3	0.084" (2.13)

Note: CP50165-SS cap must be used with the MFP cores in the SK-MFP.

## MATERIALS

### ORIFICE INSERT / CORE MATERIAL CODE

Material	Orifice Insert Material Code	Core Material Code
Hardened Stainless Steel	SIBA	SBBA SBBA-MFP
Tungsten Carbide Y Type	SIBY	SBBY SBBY-MFP
Tungsten Carbide M Type	SIBYM	SBBYM SBBYM-MFP

Note: Gaskets for SB and SB-MFP nozzles: fiber and PTFE with max. operating temp. of 300°F (150°C) and aluminum with max. operating temp. of 1000°F (540°C). O-rings for SKH-MFP are Viton® with max. operating temp. of 400°F (204°C) and PEEK™ with max. operating temp. of 480°F (249°C). High temperature versions available.

## ORDERING INFORMATION

Inlet Conn.

Nozzle Type

+

Orifice Insert Material Code

Orifice Insert Size No.

+

Core Material Code

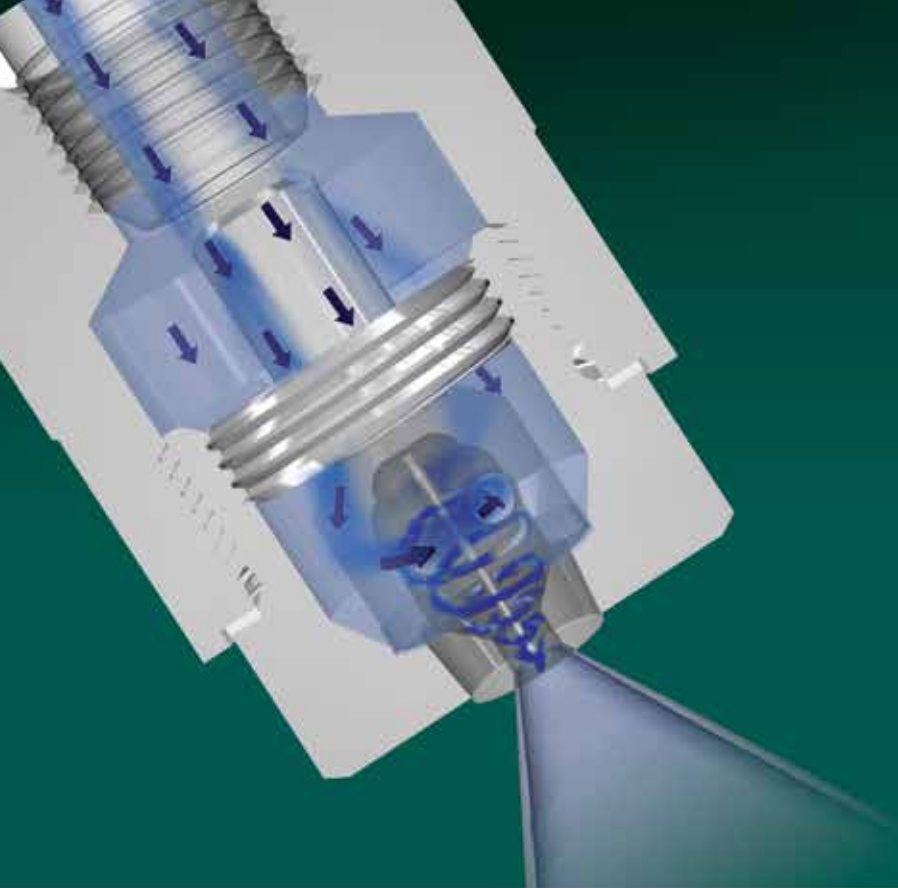
Core Size No.

ORIFICE INSERT      CORE

**Example**

1/4 SBH-MFP + SIBYM 54 + SBBYM27 - MFP

Note: Only MFP cores can be used with SBH-MFP and SBHN-MFP. Orifice inserts and Cores can be ordered separately. Include material code and size no. as shown above.



## WHIRLJET® SPRAYDRY® NOZZLES





# WHIRLJET® SPRAYDRY® NOZZLES PERFORMANCE DATA

Orifice Insert		Whirl-chamber Flat WC-TC or Slope WCX-TC	Spray Angle "A"			Water Capacity – GPH Gallons Per Hour (LPH Liters Per Hour)**								
Dia. (mm)	Size No.		100 psi (7 bar)	500 psi (35 bar)	1000 psi (70 bar)	100 psi (7 bar)	200 psi (15 bar)	300 psi (20 bar)	500 psi (35 bar)	1000 psi (70 bar)	2000 psi* (135 bar)	3000 psi* (210 bar)	4000 psi* (275 bar)	5000 psi* (340 bar)
0.038 (0.97)	0.5	1	62	59	49	10.2 (39.0)	14.6 (57.5)	17.9 (66.6)	23.2 (88.6)	33.1 (126)	46.8 (175)	57.3 (218)	66.1 (250)	73.9 (278)
0.043 (1.09)	0.6	1	68	63	53	11.5 (43.7)	16.3 (64.2)	20 (74.3)	25.8 (98.6)	36.7 (140)	51.9 (194)	63.5 (242)	73.4 (277)	82 (308)
0.038 (0.97)	0.5	1.5	54	51	42	11.8 (44.9)	16.7 (66.1)	20.6 (76.6)	26.7 (102)	38 (145)	53.8 (201)	65.9 (251)	76.1 (288)	85 (320)
0.038 (0.97)	0.5	2	51	47	38	12.4 (47.5)	17.8 (70.1)	21.8 (81.3)	28.4 (108)	40.5 (154)	57.3 (214)	70.1 (267)	81 (306)	90.5 (340)
0.044 (1.12)	0.7	1	69	64	53	12.5 (47.6)	17.7 (69.8)	21.7 (80.7)	28 (107)	39.7 (151)	56.1 (210)	68.8 (262)	79.4 (300)	88.8 (334)
0.043 (1.09)	0.6	1.5	60	54	45	13.2 (50.2)	18.7 (73.8)	23 (85.4)	29.7 (113)	42.2 (161)	59.7 (223)	73.1 (279)	84.4 (319)	94.3 (355)
0.050 (1.27)	0.8	1	75	68	57	13.5 (51.5)	19.1 (75.5)	23.4 (87.3)	30.3 (116)	42.9 (164)	60.7 (227)	74.4 (284)	85.9 (325)	96 (361)
0.052 (1.32)	0.9	1	76	69	58	14 (53.6)	20.1 (79.3)	24.8 (92.3)	32.3 (123)	46.2 (176)	65.4 (245)	80.1 (305)	92.4 (349)	103 (389)
0.043 (1.09)	0.6	2	56	50	41	14.3 (54.7)	20.4 (80.5)	25 (93.2)	32.4 (124)	46.1 (176)	65.2 (244)	79.8 (304)	92.1 (348)	103 (387)
0.044 (1.12)	0.7	1.5	61	55	46	14.4 (54.7)	20.3 (80.3)	24.9 (92.8)	32.2 (123)	45.7 (174)	64.6 (242)	79.1 (302)	91.3 (345)	102 (384)
0.050 (1.27)	0.8	1.5	67	59	49	15.5 (59.2)	22 (86.8)	27 (100)	34.9 (133)	49.4 (188)	69.8 (262)	85.5 (326)	98.8 (373)	110 (415)
0.044 (1.12)	0.7	2	57	51	42	15.8 (60.2)	22.4 (88.6)	27.6 (103)	35.7 (136)	50.8 (194)	71.8 (269)	88 (336)	102 (384)	114 (427)
0.055 (1.40)	1	1	74	67	57	16.1 (61.5)	22.8 (90)	27.9 (104)	36.1 (138)	51 (195)	72.1 (270)	88.3 (337)	102 (386)	114 (429)
0.052 (1.32)	0.9	1.5	69	60	50	16.1 (61.6)	23.1 (91.3)	28.5 (106)	37.1 (142)	53.2 (203)	75.2 (282)	92.1 (351)	106 (402)	119 (447)
0.050 (1.27)	0.8	2	63	55	45	17.2 (65.5)	24.4 (96.4)	30 (112)	38.9 (148)	55.4 (211)	78.3 (293)	95.9 (366)	111 (419)	124 (465)
0.052 (1.32)	0.9	2	64	56	47	18.4 (70.1)	26.2 (103)	32.3 (120)	41.9 (160)	59.7 (228)	84.5 (316)	103 (395)	119 (452)	134 (502)
0.055 (1.40)	1	1.5	71	61	54	19 (72.4)	26.8 (106)	32.9 (122)	42.4 (162)	60 (229)	84.9 (318)	104 (396)	120 (454)	134 (504)
0.070 (1.78)	1.5	1	89	80	65	20.9 (79.6)	29.5 (117)	36.1 (135)	46.7 (178)	66 (252)	93.3 (350)	114 (436)	132 (499)	148 (555)
0.055 (1.40)	1	2	67	59	59	20.9 (79.6)	29.5 (117)	36.1 (135)	46.7 (178)	66.1 (252.2)	93.3 (350)	114 (436)	132 (499)	148 (555)
0.055 (1.40)	1	3	57	46	36	21.8 (83.2)	30.9 (122)	37.8 (141)	48.8 (186)	69 (263)	97.6 (365)	120 (456)	138 (522)	154 (580)
0.078 (1.98)	2	1	92	80	65	22.8 (86.8)	32.2 (127)	39.4 (147)	50.9 (194)	72 (275)	102 (381)	125 (476)	144 (544)	161 (605)
0.055 (1.40)	1	4	55	43	35	22.8 (86.8)	32.2 (127)	39.4 (147)	50.9 (194)	72.1 (275.2)	102 (381)	125 (476)	144 (544)	161 (605)
0.070 (1.78)	1.5	1.5	84	72	59	25.6 (97.7)	36.2 (143)	44.4 (165)	57.3 (218)	81 (309)	115 (429)	140 (535)	162 (612)	181 (681)
0.055 (1.40)	1	5	54	41	34	25.6 (97.7)	36.2 (143)	44.4 (165)	57.3 (218)	81.1 (309)	115 (429)	140 (535)	162 (612)	181 (681)
0.094 (2.39)	3	1	104	89	72	27.5 (105)	38.9 (154)	47.7 (177)	61.5 (235)	87 (332)	123 (461)	151 (575)	174 (658)	195 (731)
0.078 (1.98)	2	1.5	89	72	60	28.5 (109)	40.2 (159)	49.3 (183)	63.6 (243)	90 (343)	127 (477)	156 (595)	180 (680)	201 (757)
0.070 (1.78)	1.5	2	82	65	54	28.5 (109)	40.2 (159)	49.3 (183)	63.6 (243)	90.1 (343.2)	127 (477)	156 (595)	180 (680)	201 (757)
0.055 (1.40)	1	6	50	37	32	28.5 (109)	40.2 (159)	49.3 (183)	63.6 (243)	90.2 (343.4)	127 (477)	156 (595)	180 (680)	201 (757)
0.055 (1.40)	1	7	49	34	31	28.5 (109)	40.2 (159)	49.3 (183)	63.6 (243)	90.3 (343)	127 (477)	156 (595)	180 (680)	201 (757)
0.109 (2.77)	4	1	105	91	78	31.3 (119)	44.3 (175)	54.2 (202)	70 (267)	99 (378)	140 (524)	171 (654)	198 (748)	221 (832)
0.078 (1.98)	2	2	81	68	57	32.3 (123)	45.6 (180)	55.9 (208)	72.1 (275)	102 (389)	144 (540)	177 (674)	204 (771)	228 (857)
0.070 (1.78)	1.5	3	67	54	44	32.3 (123)	45.6 (180)	55.9 (208)	72.1 (275)	102.1 (389.2)	144 (540)	177 (674)	204 (771)	228 (857)
0.055 (1.40)	1	8	47	33	28	32.3 (123)	45.6 (180)	55.9 (208)	72.1 (275)	102.2 (389.4)	144 (540)	177 (674)	204 (771)	228 (857)
0.094 (2.39)	3	1.5	99	77	66	34.2 (130)	48.3 (191)	59.2 (220)	76.4 (291)	108 (412)	153 (572)	187 (713)	216 (816)	241 (908)
0.070 (1.78)	1.5	4	66	51	41	34.2 (130)	48.3 (191)	59.2 (220)	76.4 (291)	108.1 (412.2)	153 (572)	187 (713)	216 (816)	241 (908)

\* For AA104 only

\*\* Tabulation is based on spraying water at temperatures of 70°F (21°C).

Note: In the tables, the psi and bar values are not direct conversions of each other. Also, the GPH and LPH values are not direct conversions of each other.

See Page 29 for Whirlchamber Capacity Sizes



# WHIRLJET® SPRAYDRY® NOZZLES PERFORMANCE DATA

Orifice Insert		Whirl-chamber Flat WC-TC or Slope WCX-TC	Spray Angle "A"			Water Capacity – GPH Gallons Per Hour (LPH Liters Per Hour)**									
Dia. (mm)	Size No.		100 psi (7bar)	500 psi (35 bar)	1000 psi (70 bar)	100 psi (7 bar)	200 psi (15 bar)	300 psi (20 bar)	500 psi (35 bar)	1000 psi (70 bar)	2000 psi* (135 bar)	3000 psi* (210 bar)	4000 psi* (275 bar)	5000 psi* (340 bar)	
0.055 (1.40)	1	10	40	24	22	34.2 (130)	48.3 (191)	59.2 (220)	76.4 (291)	108.2 (412.4)	153 (572)	187 (713)	216 (816)	241 (908)	
0.055 (1.40)	1	12	40	24	22	36 (138)	51 (201)	62.4 (232)	80.6 (307)	114 (435)	161 (604)	197 (753)	228 (862)	255 (958)	
0.129 (3.28)	5	1	114	96	81	37 (141)	52.3 (207)	64.1 (239)	82.7 (316)	117 (446)	165 (620)	203 (773)	234 (885)	262 (984)	
0.055 (1.40)	1	15	37	24	20	37 (141)	52.3 (207)	64.1 (239)	82.7 (316)	117.1 (446.2)	165 (620)	203 (773)	234 (885)	262 (984)	
0.136 (3.45)	6	1	116	97	85	37.9 (145)	53.7 (212)	65.7 (245)	84.9 (324)	120 (458)	170 (636)	208 (793)	240 (907)	268 (1000)	
0.070 (1.78)	1.5	5	65	48	38	37.9 (145)	53.7 (212)	65.7 (245)	84.9 (324)	120.1 (458.2)	170 (636)	208 (793)	240 (907)	268 (1000)	
0.141 (3.58)	7	1	118	99	89	38.9 (148)	55 (217)	67.4 (251)	87 (332)	123 (469)	174 (652)	213 (813)	246 (930)	275 (1030)	
0.109 (2.77)	4	1.5	104	81	72	38.9 (148)	55 (217)	67.4 (251)	87 (332)	123.1 (469.2)	174 (652)	213 (813)	246 (930)	275 (1030)	
0.078 (1.98)	2	3	70	55	45	38.9 (148)	55 (217)	67.4 (251)	87 (332)	123.2 (469.4)	174 (652)	213 (813)	246 (930)	275 (1030)	
0.094 (2.39)	3	2	88	73	64	39.8 (152)	56.3 (222)	69 (257)	89.1 (340)	126 (481)	178 (667)	218 (832)	252 (953)	282 (1050)	
0.078 (1.98)	2	4	69	52	43	40.8 (156)	57.7 (228)	70.7 (263)	91.2 (348)	129 (492)	182 (683)	223 (852)	258 (975)	288 (1080)	
0.156 (3.96)	8	1	122	102	90	41.7 (159)	59 (233)	72.3 (269)	93.3 (356)	132 (503)	187 (699)	229 (872)	264 (998)	295 (1100)	
0.070 (1.78)	1.5	6	61	45	37	41.7 (159)	59 (233)	72.3 (269)	93.3 (356)	132.1 (503.2)	187 (699)	229 (872)	264 (998)	295 (1100)	
0.055 (1.40)	1	20	37	18	19	42.7 (163)	60.4 (238)	73.9 (275)	95.5 (364)	135 (515)	191 (715)	234 (892)	270 (1020)	302 (1130)	
0.129 (3.28)	5	1.5	114	85	74	43.6 (166)	61.7 (244)	75.6 (281)	97.6 (372)	138 (526)	195 (731)	239 (912)	276 (1040)	309 (1160)	
0.078 (1.98)	2	5	69	49	42	43.6 (166)	61.7 (244)	75.6 (281)	97.6 (372)	138.1 (526.2)	195 (731)	239 (912)	276 (1040)	309 (1160)	
0.070 (1.78)	1.5	7	58	43	37	43.6 (166)	61.7 (244)	75.6 (281)	97.6 (372)	138.2 (526.4)	195 (731)	239 (912)	276 (1040)	309 (1160)	
0.177 (4.5)	10	1	124	104	96	44.6 (170)	63.1 (249)	77.2 (287)	99.7 (380)	141 (538)	199 (747)	244 (931)	282 (1060)	315 (1180)	
0.109 (2.77)	4	2	96	77	67	45.5 (174)	64.4 (254)	78.9 (294)	102 (388)	144 (549)	204 (763)	249 (951)	288 (1080)	322 (1210)	
0.070 (1.78)	1.5	8	54	37	33	45.5 (174)	64.4 (254)	78.9 (294)	102 (388)	144.1 (549.2)	204 (763)	249 (951)	288 (1080)	322 (1210)	
0.136 (3.45)	6	1.5	115	86	77	46.5 (177)	65.7 (260)	80.5 (300)	104 (396)	147 (561)	208 (779)	255 (971)	294 (1110)	329 (1230)	
0.141 (3.58)	7	1.5	116	88	80	47.4 (181)	67.1 (265)	82.2 (306)	106 (405)	150 (572)	212 (795)	260 (991)	300 (1130)	335 (1260)	
0.078 (1.98)	2	6	63	46	40	48.4 (185)	68.4 (270)	83.8 (312)	108 (413)	153 (584)	216 (810)	265 (1010)	306 (1150)	342 (1280)	
0.213 (5.41)	15	1	130	112	102	49.3 (188)	69.8 (275)	85.4 (318)	110 (421)	156 (595)	221 (826)	270 (1030)	312 (1170)	349 (1310)	
0.094 (2.39)	3	3	78	59	48	49.3 (188)	69.8 (275)	85.4 (318)	110 (421)	156.1 (596)	221 (826)	270 (1030)	312 (1170)	349 (1310)	
0.078 (1.98)	2	7	58	44	39	49.3 (188)	69.8 (275)	85.4 (318)	110 (421)	156.2 (597)	221 (826)	270 (1030)	312 (1170)	349 (1310)	
0.070 (1.78)	1.5	10	52	33	27	51.2 (195)	72.4 (286)	88.7 (330)	115 (437)	162 (618)	229 (858)	281 (1070)	324 (1220)	362 (1360)	
0.156 (3.96)	8	1.5	116	89	82	52.2 (199)	73.8 (291)	90.4 (336)	117 (445)	165 (629)	233 (874)	286 (1090)	330 (1240)	369 (1380)	
0.129 (3.28)	5	2	106	80	70	52.2 (199)	73.8 (291)	90.4 (336)	117 (445)	165.1 (630)	233 (874)	286 (1090)	330 (1240)	369 (1380)	
0.094 (2.39)	3	4	77	56	46	52.2 (199)	73.8 (291)	90.4 (336)	117 (445)	165.2 (631)	233 (874)	286 (1090)	330 (1240)	369 (1380)	
0.250 (6.35)	20	1	128	117	104	53.1 (203)	75.1 (297)	92 (343)	119 (453)	168 (641)	238 (890)	291 (1100)	336 (1270)	376 (1410)	
0.070 (1.78)	1.5	12	51	33	27	54.1 (206)	76.5 (302)	93.7 (349)	121 (461)	171 (652)	242 (906)	296 (1120)	342 (1290)	382 (1430)	
0.136 (3.45)	6	2	106	82	74	55 (210)	77.8 (307)	95.3 (355)	123 (469)	174 (665)	246 (922)	301 (1140)	348 (1310)	389 (1460)	
0.078 (1.98)	2	8	57	41	36	55 (210)	77.8 (307)	95.3 (355)	123 (469)	174.1 (665)	246 (922)	301 (1140)	348 (1310)	389 (1460)	

\* For AA104 only

\*\* Tabulation is based on spraying water at temperatures of 70°F (21°C).

Note: In the tables, the psi and bar values are not direct conversions of each other. Also, the GPH and LPH values are not direct conversions of each other.

See Page 29 for Whirlchamber Capacity Sizes



# WHIRLJET® SPRAYDRY® NOZZLES PERFORMANCE DATA

Orifice Insert		Whirl-chamber Flat WC-TC or Slope WCX-TC	Spray Angle "A"			Water Capacity – GPH Gallons Per Hour (LPH Liters Per Hour)**								
Dia. (mm)	Size No.		100 psi (7bar)	500 psi (35 bar)	1000 psi (70 bar)	100 psi (7 bar)	200 psi (15 bar)	300 psi (20 bar)	500 psi (35 bar)	1000 psi (70 bar)	2000 psi* (135 bar)	3000 psi* (210 bar)	4000 psi* (275 bar)	5000 psi* (340 bar)
0.177 (4.5)	10	1.5	122	94	89	56 (213)	79.2 (313)	96.9 (361)	125 (477)	177 (675)	250 (938)	307 (1160)	354 (1330)	396 (1480)
0.094 (2.39)	3	5	77	55	44	56 (213)	79.2 (313)	96.9 (361)	125 (477)	177.1 (676)	250 (938)	307 (1160)	354 (1330)	396 (1480)
0.141 (3.58)	7	2	106	84	78	56.9 (217)	80.5 (318)	98.6 (367)	127 (485)	180 (687)	255 (953)	312 (1180)	360 (1360)	402 (1510)
0.070 (1.78)	1.5	15	45	29	23	56.9 (217)	80.5 (318)	98.6 (367)	127 (485)	180.1 (688)	255 (953)	312 (1180)	360 (1360)	402 (1510)
0.109 (2.77)	4	3	82	62	51	58.8 (224)	83.2 (328)	102 (379)	132 (502)	186 (709)	263 (985)	322 (1220)	372 (1400)	416 (1560)
0.156 (3.96)	8	2	112	85	79	61.7 (235)	87.2 (344)	107 (398)	138 (526)	195 (744)	276 (1030)	338 (1280)	390 (1470)	436 (1630)
0.078 (1.98)	2	10	55	32	29	61.7 (235)	87.2 (344)	107 (398)	138 (526)	195.1 (745)	276 (1030)	338 (1280)	390 (1470)	436 (1630)
0.109 (2.77)	4	4	78	59	48	62.6 (239)	88.5 (350)	108 (404)	140 (534)	198 (755)	280 (1040)	343 (1300)	396 (1490)	443 (1660)
0.094 (2.39)	3	6	71	51	43	62.6 (239)	88.5 (350)	108 (404)	140 (534)	198.1 (756)	280 (1040)	343 (1300)	396 (1490)	443 (1660)
0.094 (2.39)	3	7	65	49	43	64.5 (246)	91.2 (360)	112 (416)	144 (550)	204 (778)	288 (1080)	353 (1340)	408 (1540)	456 (1710)
0.078 (1.98)	2	12	54	33	28	65.5 (250)	92.6 (365)	113 (422)	146 (558)	207 (790)	293 (1090)	359 (1360)	414 (1560)	463 (1740)
0.078 (1.98)	2	15	47	30	24	65.5 (250)	92.6 (365)	113 (422)	146 (558)	207.1 (791)	293 (1090)	359 (1360)	414 (1560)	463 (1740)
0.213 (5.41)	15	1.5	126	96	87	66.4 (253)	93.9 (371)	115 (428)	148 (566)	210 (801)	297 (1110)	364 (1380)	420 (1580)	470 (1760)
0.109 (2.77)	4	5	75	56	46	66.4 (253)	93.9 (371)	115 (428)	148 (566)	210.1 (802)	297 (1110)	364 (1380)	420 (1580)	470 (1760)
0.177 (4.5)	10	2	113	91	20	67.4 (257)	95.3 (376)	117 (434)	151 (574)	213 (812)	301 (1120)	369 (1400)	426 (1610)	476 (1790)
0.070 (1.78)	1.5	20	39	24	82	68.3 (261)	96.6 (381)	118 (440)	153 (583)	216 (824)	305 (1140)	374 (1420)	432 (1630)	483 (1810)
0.094 (2.39)	3	8	67	48	42	70.2 (268)	99.3 (392)	122 (453)	157 (599)	222 (847)	314 (1170)	385 (1460)	444 (1670)	496 (1860)
0.250 (6.35)	20	1.5	127	100	90	71.2 (271)	101 (397)	123 (459)	159 (607)	225 (858)	318 (1190)	390 (1480)	450 (1700)	503 (1890)
0.129 (3.28)	5	3	86	66	57	71.2 (271)	101 (397)	123 (459)	159 (607)	225.2 (859)	318 (1190)	390 (1480)	450 (1700)	503 (1890)
0.109 (2.77)	4	6	75	55	46	74 (282)	105 (413)	128 (477)	165 (631)	234 (893)	331 (1230)	405 (1540)	468 (1760)	523 (1960)
0.213 (5.41)	15	2	121	96	88	75.9 (289)	107 (424)	131 (489)	170 (647)	240 (915)	339 (1270)	416 (1580)	480 (1810)	537 (2010)
0.136 (3.45)	6	3	89	68	59	75.9 (289)	107 (424)	131 (489)	170 (647)	240.1 (916)	339 (1270)	416 (1580)	480 (1810)	537 (2010)
0.129 (3.28)	5	4	86	64	53	76.8 (293)	109 (429)	133 (495)	172 (655)	243 (927)	344 (1280)	421 (1600)	486 (1830)	543 (2040)
0.109 (2.77)	4	7	75	54	46	76.8 (293)	109 (429)	133 (495)	172 (655)	243.1 (928)	344 (1280)	421 (1600)	486 (1830)	543 (2040)
0.078 (1.98)	2	20	40	26	25	76.8 (293)	109 (429)	133 (495)	172 (655)	243.2 (929)	344 (1280)	421 (1600)	486 (1830)	543 (2040)
0.141 (3.58)	7	3	92	71	61	77.8 (297)	110 (434)	135 (502)	174 (663)	246 (938)	348 (1300)	426 (1620)	492 (1850)	550 (2060)
0.136 (3.45)	6	4	87	66	55	79.7 (304)	113 (445)	138 (514)	178 (680)	252 (961)	356 (1330)	436 (1660)	504 (1900)	563 (2110)
0.094 (2.39)	3	10	60	40	36	79.7 (304)	113 (445)	138 (514)	178 (680)	252.1 (961)	356 (1330)	436 (1660)	504 (1900)	563 (2110)
0.129 (3.28)	5	5	86	63	50	80.6 (308)	114 (450)	140 (520)	180 (688)	255 (973)	361 (1350)	442 (1680)	510 (1920)	570 (2140)
0.141 (3.58)	7	4	89	68	56	82.5 (315)	117 (461)	143 (532)	185 (704)	261 (996)	369 (1380)	452 (1720)	522 (1970)	584 (2190)
0.136 (3.45)	6	5	86	64	51	84.4 (322)	119 (471)	146 (544)	189 (720)	267 (1010)	378 (1410)	462 (1760)	534 (2010)	597 (2240)
0.109 (2.77)	4	8	73	50	44	85.4 (326)	121 (477)	148 (550)	191 (728)	270 (1020)	382 (1430)	468 (1780)	540 (2040)	604 (2260)
0.094 (2.39)	3	12	59	39	30	85.4 (326)	121 (477)	148 (550)	191 (728)	270.1 (1021)	382 (1430)	468 (1780)	540 (2040)	604 (2260)
0.250 (6.35)	20	2	122	100	90	86.3 (329)	122 (482)	150 (557)	193 (736)	273 (1040)	386 (1440)	473 (1800)	546 (2060)	610 (2290)

\* For AA104 only

\*\* Tabulation is based on spraying water at temperatures of 70°F (21°C).

Note: In the tables, the psi and bar values are not direct conversions of each other. Also, the GPH and LPH values are not direct conversions of each other.

See Page 29 for Whirlchamber Capacity Sizes



# WHIRLJET® SPRAYDRY® NOZZLES PERFORMANCE DATA

Orifice Insert		Whirl-chamber Flat WC-TC or Slope WCX-TC	Spray Angle "A"			Water Capacity – GPH Gallons Per Hour (LPH Liters Per Hour)**									
Dia. (mm)	Size No.		100 psi (7bar)	500 psi (35 bar)	1000 psi (70 bar)	100 psi (7 bar)	200 psi (15 bar)	300 psi (20 bar)	500 psi (35 bar)	1000 psi (70 bar)	2000 psi* (135 bar)	3000 psi* (210 bar)	4000 psi* (275 bar)	5000 psi* (340 bar)	
0.156 (3.96)	8	3	96	73	63	86.3 (329)	122 (482)	150 (557)	193 (736)	273.1 (1041)	386 (1440)	473 (1800)	546 (2060)	610 (2290)	
0.141 (3.58)	7	5	86	65	52	87.3 (333)	123 (487)	151 (563)	195 (744)	276 (1050)	390 (1460)	478 (1820)	552 (2080)	617 (2320)	
0.156 (3.96)	8	4	93	70	59	91.1 (347)	129 (509)	158 (587)	204 (777)	288 (1090)	407 (1520)	499 (1900)	576 (2170)	644 (2420)	
0.094 (2.39)	3	15	53	34	33	92 (351)	130 (514)	159 (593)	206 (785)	291 (1100)	412 (1540)	504 (1920)	582 (2190)	651 (2440)	
0.129 (3.28)	5	6	80	60	51	93.9 (358)	133 (524)	163 (606)	210 (801)	297 (1130)	420 (1570)	514 (1960)	594 (2240)	664 (2490)	
0.129 (3.28)	5	7	80	57	49	94.9 (362)	134 (530)	164 (612)	212 (809)	300 (1140)	424 (1580)	520 (1980)	600 (2260)	671 (2520)	
0.136 (3.45)	6	6	83	61	52	95.8 (365)	136 (535)	166 (618)	214 (817)	303 (1150)	429 (1600)	525 (2000)	606 (2290)	678 (2540)	
0.177 (4.5)	10	3	99	76	70	96.8 (369)	137 (540)	168 (624)	216 (825)	306 (1160)	433 (1620)	530 (2020)	612 (2310)	684 (2570)	
0.109 (2.77)	4	10	66	43	40	96.8 (369)	137 (540)	168 (624)	216 (825)	306.1 (1161)	433 (1620)	530 (2020)	612 (2310)	684 (2570)	
0.156 (3.96)	8	5	91	67	56	97.7 (373)	138 (546)	169 (630)	218 (833)	309 (1170)	437 (1630)	535 (2040)	618 (2330)	691 (2590)	
0.141 (3.58)	7	6	84	62	55	99.6 (380)	141 (556)	173 (642)	223 (850)	315 (1200)	445 (1660)	546 (2080)	630 (2380)	704 (2640)	
0.136 (3.45)	6	7	81	59	53	99.6 (380)	141 (556)	173 (642)	223 (850)	315.1 (1201)	445 (1660)	546 (2080)	630 (2380)	704 (2640)	
0.109 (2.77)	4	15	58	36	34	102 (391)	145 (572)	177 (661)	229 (874)	324 (1230)	458 (1710)	561 (2140)	648 (2440)	724 (2720)	
0.141 (3.58)	7	7	83	60	58	103 (394)	146 (577)	179 (667)	231 (882)	327 (1240)	462 (1730)	566 (2160)	654 (2470)	731 (2740)	
0.177 (4.5)	10	4	95	73	67	104 (398)	148 (583)	181 (673)	233 (890)	330 (1250)	467 (1740)	572 (2180)	660 (2490)	738 (2770)	
0.129 (3.28)	5	8	77	52	46	104 (398)	148 (583)	181 (673)	233 (890)	330.15 (1251)	467 (1740)	572 (2180)	660 (2490)	738 (2770)	
0.109 (2.77)	4	12	63	40	38	104 (398)	148 (583)	181 (673)	233 (890)	330.25 (1252)	467 (1740)	572 (2180)	660 (2490)	738 (2770)	
0.094 (2.39)	3	20	48	29	28	106 (405)	150 (593)	184 (685)	238 (906)	336 (1280)	475 (1770)	582 (2210)	672 (2540)	751 (2820)	
0.156 (3.96)	8	6	88	66	60	110 (420)	156 (614)	191 (709)	246 (939)	348 (1320)	492 (1840)	603 (2290)	696 (2630)	778 (2920)	
0.136 (3.45)	6	8	78	53	47	111 (423)	157 (620)	192 (716)	248 (947)	351 (1330)	496 (1850)	608 (2310)	702 (2650)	785 (2950)	
0.177 (4.5)	10	5	92	70	65	112 (427)	158 (625)	194 (722)	250 (955)	354 (1350)	501 (1870)	613 (2330)	708 (2670)	792 (2970)	
0.213 (5.41)	15	3	104	81	75	114 (434)	161 (636)	197 (734)	255 (971)	360 (1370)	509 (1900)	624 (2370)	720 (2720)	805 (3020)	
0.141 (3.58)	7	8	79	55	49	115 (438)	162 (641)	199 (740)	257 (979)	363 (1380)	513 (1920)	629 (2390)	726 (2740)	812 (3050)	
0.156 (3.96)	8	7	85	65	63	116 (441)	164 (646)	200 (746)	259 (987)	366 (1390)	518 (1930)	634 (2410)	732 (2760)	818 (3070)	
0.129 (3.28)	5	10	70	48	39	118 (449)	166 (657)	204 (758)	263 (1000)	372 (1410)	526 (1970)	644 (2450)	744 (2810)	832 (3120)	
0.213 (5.41)	15	4	102	79	73	123 (470)	174 (689)	214 (795)	276 (1050)	390 (1480)	552 (2060)	675 (2570)	780 (2940)	872 (3270)	
0.177 (4.5)	10	6	90	69	64	125 (478)	177 (699)	217 (807)	280 (1060)	396 (1510)	560 (2090)	686 (2610)	792 (2990)	885 (3320)	
0.136 (3.45)	6	10	73	49	42	125 (478)	177 (699)	217 (807)	280 (1060)	396.1 (1512)	560 (2090)	686 (2610)	792 (2990)	885 (3320)	
0.156 (3.96)	8	8	83	57	52	129 (492)	182 (720)	223 (832)	288 (1100)	408 (1550)	577 (2160)	707 (2690)	816 (3080)	912 (3420)	
0.129 (3.28)	5	12	69	44	41	129 (492)	182 (720)	223 (832)	288 (1100)	408.1 (1555)	577 (2160)	707 (2690)	816 (3080)	912 (3420)	
0.177 (4.5)	10	7	88	69	64	131 (499)	185 (731)	227 (844)	293 (1110)	414 (1570)	585 (2190)	717 (2730)	828 (3120)	926 (3480)	
0.141 (3.58)	7	10	76	50	46	132 (503)	186 (736)	228 (850)	295 (1120)	417 (1590)	590 (2200)	722 (2750)	834 (3150)	932 (3500)	
0.213 (5.41)	15	5	101	77	72	133 (507)	188 (742)	230 (856)	297 (1130)	420 (1600)	594 (2220)	727 (2770)	840 (3170)	939 (3530)	
0.109 (2.77)	4	20	52	32	31	133 (507)	188 (742)	230 (856)	297 (1130)	420.1 (1603)	594 (2220)	727 (2770)	840 (3170)	939 (3530)	

\* For AA104 only

\*\* Tabulation is based on spraying water at temperatures of 70°F (21°C).

Note: In the tables, the psi and bar values are not direct conversions of each other. Also, the GPH and LPH values are not direct conversions of each other.

See Page 29 for Whirlchamber Capacity Sizes



# WHIRLJET® SPRAYDRY® NOZZLES PERFORMANCE DATA

Orifice Insert		Whirl-chamber Flat WC-TC or Slope WCX-TC	Spray Angle "A"			Water Capacity – GPH Gallons Per Hour (LPH Liters Per Hour)**									
Dia. (mm)	Size No.		100 psi (7bar)	500 psi (35 bar)	1000 psi (70 bar)	100 psi (7 bar)	200 psi (15 bar)	300 psi (20 bar)	500 psi (35 bar)	1000 psi (70 bar)	2000 psi* (135 bar)	3000 psi* (210 bar)	4000 psi* (275 bar)	5000 psi* (340 bar)	
0.250 (6.35)	20	3	109	86	78	134 (510)	189 (747)	232 (862)	299 (1140)	423 (1610)	598 (2240)	733 (2790)	846 (3190)	946 (3550)	
0.136 (3.45)	6	12	71	46	42	138 (525)	195 (768)	238 (887)	308 (1170)	435 (1650)	615 (2300)	753 (2870)	870 (3280)	973 (3650)	
0.141 (3.58)	7	12	73	48	44	143 (546)	203 (800)	248 (924)	320 (1220)	453 (1720)	641 (2390)	785 (2990)	906 (3420)	1013 (3800)	
0.250 (6.35)	20	4	109	85	77	146 (557)	207 (816)	253 (942)	327 (1240)	462 (1760)	653 (2440)	800 (3050)	924 (3490)	1033 (3880)	
0.129 (3.28)	5	15	62	42	35	147 (561)	208 (821)	255 (948)	329 (1250)	465 (1770)	658 (2460)	805 (3070)	930 (3510)	1040 (3900)	
0.177 (4.5)	10	8	88	61	57	148 (564)	209 (826)	256 (954)	331 (1260)	468 (1780)	662 (2470)	811 (3090)	936 (3530)	1046 (3930)	
0.156 (3.96)	8	10	78	54	51	148 (564)	209 (826)	256 (954)	331 (1260)	468.1 (1784)	662 (2470)	811 (3090)	936 (3530)	1046 (3930)	
0.213 (5.41)	15	6	97	75	72	149 (568)	211 (832)	258 (960)	333 (1270)	471 (1790)	666 (2490)	816 (3110)	942 (3560)	1053 (3950)	
0.213 (5.41)	15	7	93	73	72	157 (597)	221 (874)	271 (1000)	350 (1330)	495 (1880)	700 (2620)	857 (3270)	990 (3740)	1107 (4160)	
0.136 (3.45)	6	15	64	42	37	157 (601)	223 (879)	273 (1010)	352 (1340)	498 (1890)	704 (2630)	863 (3280)	996 (3760)	1114 (4180)	
0.250 (6.35)	20	5	108	84	76	159 (608)	225 (890)	276 (1020)	356 (1350)	504 (1920)	713 (2660)	873 (3320)	1008 (3810)	1127 (4230)	
0.156 (3.96)	8	12	74	50	49	163 (622)	231 (911)	283 (1050)	365 (1390)	516 (1960)	730 (2730)	894 (3400)	1032 (3900)	1154 (4330)	
0.141 (3.58)	7	15	66	43	40	165 (630)	233 (922)	286 (1060)	369 (1400)	522 (1990)	738 (2760)	904 (3440)	1044 (3940)	1167 (4380)	
0.177 (4.5)	10	10	83	59	55	172 (655)	243 (959)	297 (1100)	384 (1460)	543 (2070)	768 (2870)	941 (3580)	1086 (4100)	1214 (4560)	
0.129 (3.28)	5	20	56	33	32	173 (659)	244 (964)	299 (1110)	386 (1470)	546 (2080)	772 (2890)	946 (3600)	1092 (4120)	1221 (4580)	
0.250 (6.35)	20	6	103	82	75	178 (680)	252 (996)	309 (1140)	399 (1520)	564 (2150)	798 (2980)	977 (3720)	1128 (4260)	1261 (4740)	
0.213 (5.41)	15	8	97	67	60	180 (688)	255 (1000)	312 (1160)	403 (1530)	570 (2170)	806 (3010)	987 (3760)	1140 (4300)	1275 (4790)	
0.250 (6.35)	20	7	98	80	75	186 (709)	263 (1030)	322 (1190)	416 (1580)	588 (2240)	832 (3110)	1018 (3880)	1176 (4440)	1315 (4940)	
0.136 (3.45)	6	20	57	34	33	187 (713)	264 (1040)	324 (1200)	418 (1590)	591 (2250)	836 (3130)	1024 (3900)	1182 (4460)	1322 (4960)	
0.177 (4.5)	10	12	81	56	50	189 (720)	267 (1050)	327 (1210)	422 (1610)	597 (2270)	844 (3160)	1034 (3940)	1194 (4510)	1335 (5010)	
0.156 (3.96)	8	15	68	43	42	189 (720)	267 (1050)	327 (1210)	422 (1610)	597.1 (2275)	844 (3160)	1034 (3940)	1194 (4510)	1335 (5010)	
0.141 (3.58)	7	20	59	36	34	194 (738)	274 (1080)	335 (1240)	433 (1650)	612 (2330)	865 (3240)	1060 (4040)	1224 (4620)	1368 (5140)	
0.213 (5.41)	15	10	87	65	56	210 (800)	297 (1170)	363 (1350)	469 (1780)	663 (2520)	938 (3510)	1148 (4380)	1326 (5010)	1483 (5570)	
0.250 (6.35)	20	8	99	74	66	214 (818)	303 (1190)	371 (1380)	479 (1820)	678 (2580)	959 (3590)	1174 (4470)	1356 (5120)	1516 (5690)	
0.177 (4.5)	10	15	72	48	46	224 (854)	317 (1250)	388 (1440)	501 (1900)	708 (2700)	1001 (3750)	1226 (4670)	1416 (5350)	1583 (5950)	
0.156 (3.96)	8	20	60	38	37	229 (872)	323 (1270)	396 (1470)	511 (1940)	723 (2750)	1022 (3820)	1252 (4770)	1446 (5460)	1617 (6070)	
0.213 (5.41)	15	12	86	60	58	235 (897)	333 (1310)	408 (1510)	526 (2000)	744 (2830)	1052 (3940)	1289 (4910)	1488 (5620)	1664 (6250)	
0.250 (6.35)	20	10	96	66	64	250 (955)	354 (1390)	434 (1610)	560 (2130)	792 (3020)	1120 (4190)	1372 (5230)	1584 (5980)	1771 (6650)	
0.177 (4.5)	10	20	66	40	38	271 (1030)	384 (1510)	470 (1740)	607 (2310)	858 (3270)	1213 (4540)	1486 (5660)	1716 (6480)	1919 (7210)	
0.213 (5.41)	15	15	78	52	50	278 (1060)	393 (1550)	481 (1790)	622 (2370)	879 (3350)	1243 (4650)	1522 (5800)	1758 (6640)	1966 (7380)	
0.250 (6.35)	20	12	98	62	60	281 (1070)	397 (1560)	486 (1810)	628 (2390)	888 (3380)	1256 (4700)	1538 (5860)	1776 (6710)	1986 (7460)	
0.250 (6.35)	20	15	83	59	58	339 (1290)	479 (1890)	587 (2180)	757 (2880)	1071 (4080)	1515 (5670)	1855 (7070)	2142 (8090)	2395 (9000)	
0.213 (5.41)	15	20	72	44	41	349 (1330)	494 (1940)	605 (2250)	781 (2970)	1104 (4210)	1561 (5840)	1912 (7290)	2208 (8340)	2469 (9280)	
0.250 (6.35)	20	20	80	47	45	427 (1620)	604 (2380)	739 (2750)	955 (3640)	1350 (5140)	1909 (7150)	2338 (8910)	2700 (10200)	3019 (11340)	

\* For AA104 only

\*\* Tabulation is based on spraying water at temperatures of 70°F (21°C).

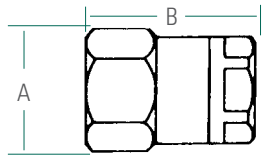
Note: In the tables, the psi and bar values are not direct conversions of each other. Also, the GPH and LPH values are not direct conversions of each other.

See Page 29 for Whirlchamber Capacity Sizes



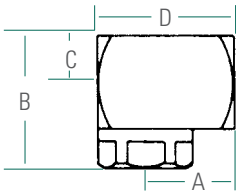


## DIMENSIONS & WEIGHTS



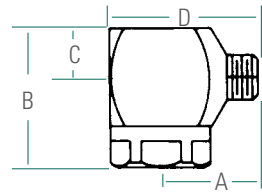
### AA104 WHIRLJET SPRAYDRY NOZZLES

Inlet Type	Inlet Conn.	A	B	Net Weight
AA (in-line)	1/4", 3/8", 1/2" NPT or BSPT (F)	1.75" (44.5 mm)	2.34" (59.5 mm)	1-1/4 lbs (.57 kg)



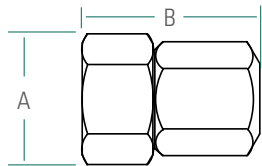
### AA104 WHIRLJET SPRAYDRY NOZZLES

Inlet Type	Inlet Conn.	A	B	C	D	Net Weight
A (angle)	1/2" NPT or BSPT (F)	1.88" (36.5 mm)	2.22" (56.3 mm)	.88" (22 mm)	2.31" (59.2 mm)	1-3/4 lbs (.80 kg)



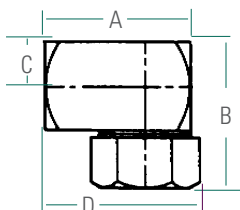
### AA104 WHIRLJET SPRAYDRY NOZZLES

Inlet Type	Inlet Conn.	A	B	C	D	Net Weight
B (angle)	3/8" NPT or BSPT (M)	1.63" (66.7 mm)	2.22" (56.3 mm)	.88" (22 mm)	2.34" (59.5 mm)	1-1/2 lbs (.68 kg)



### SSTC WHIRLJET SPRAYDRY NOZZLES

Inlet Type	Inlet Conn.	A	B	Net Weight
AA (in-line)	1/4", 3/8", 1/2" NPT or BSPT (F)	1.38" (34.9 mm)	2.28" (57.9 mm)	12-1/2 oz. (.36 kg)



### SSTC WHIRLJET SPRAYDRY NOZZLES

Inlet Type	Inlet Conn.	A	B	C	D	Net Weight
AAA (angle)	1/2" NPT or BSPT (F)	1.38" (34.9 mm)	2.09" (53.2 mm)	.63" (15.9 mm)	2" (51.3 mm)	1 lb (.45 kg)



# WHIRLJET® SPRAYDRY® NOZZLES SPECIFICATIONS

## WHIRLCHAMBER ORIFICE SIZES

Whirlchamber Capacity No.	Tangential Hole Dia. (mm)
1	.067" (1.70)
1.5	.083" (2.11)
2	.096" (2.44)
3	.125" (3.18)
4	.130" (3.30)
5	.136" (3.45)
6	.145" (3.68)
7	.152" (3.86)
8	.161" (4.09)
10	.172" (4.37)
12	.187" (4.75)
15	.159" (4.04) 2 holes
20	.184" (4.67) 2 holes

## ACCESSORIES

### ORIFICE PRESS

Removes and installs orifice inserts from SprayDry Nozzle Caps.  
**Request Data Sheet 22779**

### HIGH PRESSURE STRAINER

**Request Data Sheet 2820**

## ORDERING INFORMATION

### TYPE AA104 COMPLETE NOZZLE ASSEMBLY



#### Example



Type AA104 comes standard with a slope bottom whirlchamber. Flat bottom whirlchambers and orifice inserts may be ordered separately. See component ordering information.

### TYPE SSTC COMPLETE NOZZLE ASSEMBLY

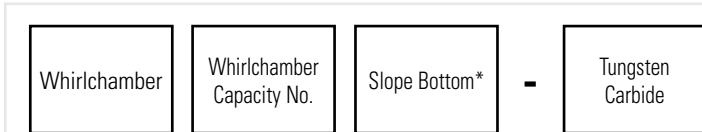


#### Example



Type SSTC comes standard with a flat bottom whirlchamber. Slope bottom whirlchambers and orifice inserts may be ordered separately. See component ordering information.

## WHIRLCHAMBERS



#### Example



\* Leave blank for flat bottom

## ORIFICE INSERTS



#### Example





Viton® is a registered trademark of Dupont Performance Elastomers.  
PEEK® is a trademark of Victrex plc Corporation.



***Spraying Systems Co.***<sup>®</sup>  
Experts in Spray Technology

North Avenue and Schmale Road, P.O. Box 7900, Wheaton, IL 60187-7901 USA

Tel: 1.800.95.SPRAY    Intl. Tel: 1.630.665.5000  
Fax: 1.888.95.SPRAY    Intl. Fax: 1.630.260.0842

[www.spray.com](http://www.spray.com)



Bulletin No. 695P Printed in the U.S.A. ©Spraying Systems Co. 2017