

Soy Protein Concentrate Manufacturer Saves More Than US\$312,000 in One Year with New Spray System

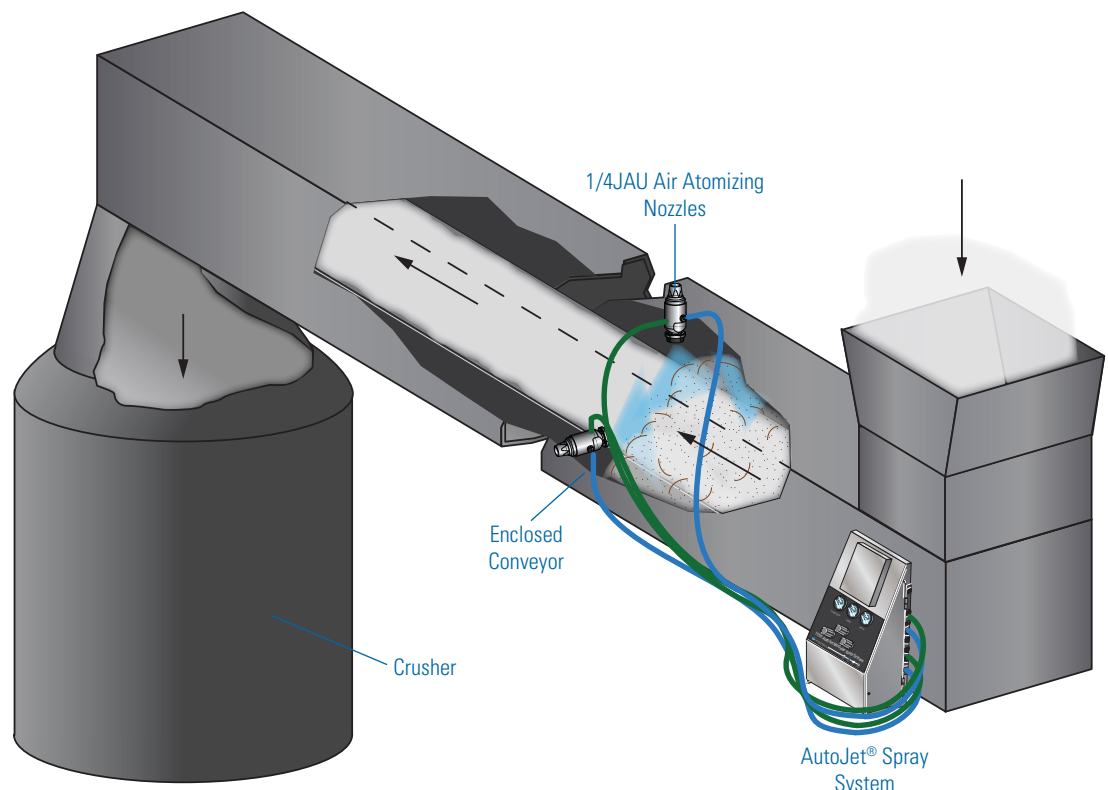


Problem:

A manufacturer of Soy Protein Concentrate (SPC) needed to prevent product loss as it moved along an open conveyor from a production area to a crusher and then to the packaging center. The value of the lost SPC was estimated at more than US\$300,000 annually. The manufacturer constructed an enclosure for the 50 m (165') conveyor but the powdered material continued to escape through small gaps in the tunnel structure.

Solution:

Spraying Systems Co.'s solution consisted of an AutoJet® Model 1550 Modular Spray System and three 1/4JAU air atomizing spray nozzles. The self-contained system includes an air operated double diaphragm pump. The spray nozzles apply a fine coating of soybean oil to the powdered SPC to slightly dampen the material and prevent it from becoming airborne. The nozzles are wall-mounted in the tunnel and provide complete coverage of the material.



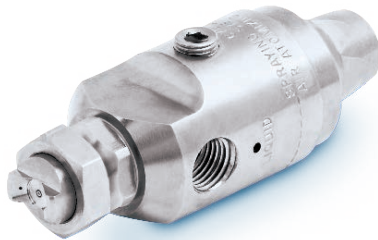


Soy Protein Concentrate Manufacturer Saves More Than US\$312,000 in One Year with New Spray System – Continued

Results:

The uniform coating of soybean oil applied to the SPC by the AutoJet® Spray System has greatly reduced the loss of the valuable SPC powder. The manufacturer is saving US\$20,000 per month and offset the cost of the new spraying equipment in less than one month.

A CLOSER LOOK AT THE SYSTEM



Three 1/4JAU air atomizing nozzles are mounted in the enclosure and apply the soybean oil uniformly across the conveyor.

AutoJet Model 1550 Modular Spray System regulates the air and liquid pressure to ensure even application of the soybean oil.



Spraying Systems Co.®
Experts in Spray Technology

North Avenue and Schmale Road, P.O. Box 7900, Wheaton, IL 60187-7901 USA

Tel: 1.800.95.SPRAY Intl. Tel: 1.630.665.5000
Fax: 1.888.95.SPRAY Intl. Fax: 1.630.260.0842
www.spray.com



Case Study No. 188 ©Spraying Systems Co. 2014