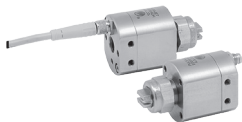


## FEATURES AND BENEFITS

- Provides clean and accurate atomized sprays and complete shut-off for high speed automatic applications.
- Electrically activated hydraulic atomizing valve accurately controls flow rate.
- Provides fast on/off operation.
- Using the AutoJet® Spray Controllers, the PulsaJet 10000 provides Pulse Width Modulation (PWM) to adjust flow rate at a given spray pressure while maintaining spray pattern integrity. See page G2, Optimization Tips for more information on the benefits of PWM.
- Compact design eliminates the need for compressed air.
- Minimizes overspray in a wide range of applications.
- Uses standard UniJet® spray tips in a wide range of spray capacities.
- Maximum pressure: 100 psi (7 bar) for all versions.
- **Key feature overview for AA10000AUH-01:**
  - Use with standard UniJet spray tip capacities up to the -01 size.
  - When paired with the 2250 AutoJet Spray Controller, capable of operating up to 10,000 cycles per minute.
- **Key feature overview for AA10000AUH-03:**
  - Use with standard UniJet spray tip capacities from the -015 size to the -03 size.
  - When paired with the 2250 AutoJet Spray Controller, capable of operating up to 10,000 cycles per minute.
- **Key feature overview for AA10000AUH-10:**
  - Use with standard UniJet spray tip capacities from the -03 size to the -10 size.
  - When paired with the 2250 AutoJet Spray Controller, capable of operating up to 5,000 cycles per minute.
- **Key feature overview for AA10000AUH-30:**
  - Use with standard UniJet spray tip capacities from the -10 size to the -30 size.
  - When paired with the 2250 AutoJet Spray Controller, capable of operating up to 2,500 cycles per minute.
  - Accessories 50935-SS mounting block for use with all units.

### AA 10000AUH-01



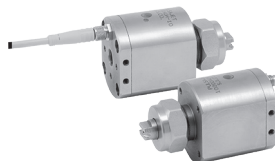
1/8" NPT or BSPT inlet connection

### AA 10000AUH-03



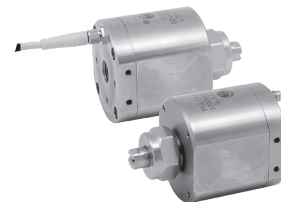
1/8" NPT or BSPT inlet connection

### AA 10000AUH-10



1/8" NPT or BSPT inlet connection

### AA 10000AUH-30



1/4" NPT or BSPT inlet connection

## OPTIMIZATION TIPS

- For the fastest and most precise control of spray cycling and spray pressures possible, use the AutoJet Spray Controllers with this automatic spray nozzle.
- See page G2 for more optimization tips.

## APPLICATIONS

- Coatings
- Lubricating
- Marking
- Moisturizing
- Robotics
- Sealing

## SEE ALSO

- PulsaJet 10000

†Spray tip shown is an example, for more information on spray tip and performance data, see:  
 Section B, Full Cone Spray Nozzles  
 Section C, Flat Spray Nozzles  
 Section D, Hollow Cone Spray Nozzles  
 Section E, Fine Spray Nozzles

## ORDERING INFO

COMPLETE NOZZLE ASSEMBLY							
NOZZLE BODY			†SPRAY TIP				
AA10000AUH - 01			+	TPU 80 01 - SS			
Nozzle Body	Capacity		Tip Type	Spray Angle	Capacity Size	Material Code	



**Spraying Systems Co.**  
 Experts in Spray Technology

PHONE 1-800-95-SPRAY, FAX 1-888-95-SPRAY

VISIT OUR WEB SITE: WWW.SPRAY.COM, EMAIL: INFO@SPRAY.COM