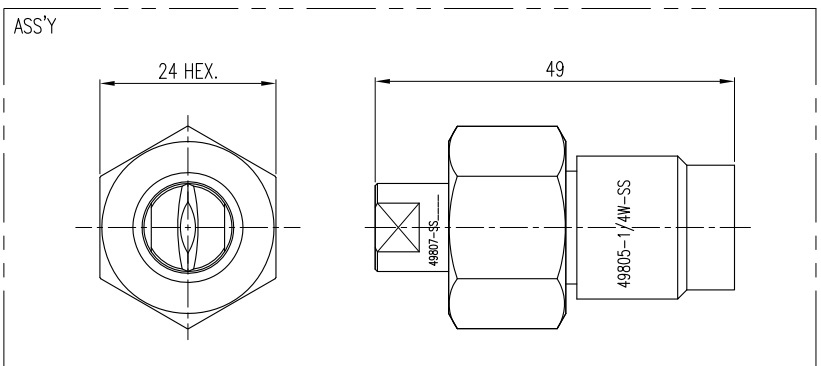


ECO NO.	DATE	REVISION & DESCRIPTION	REVISED	CHECKED

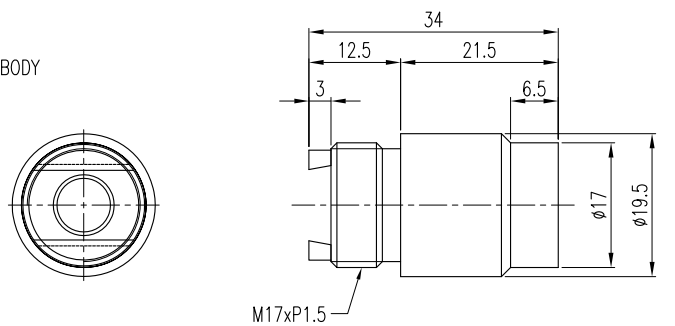
3년연 TCM #1, #2, #3 STD 도브테일 노즐

KDTP167042-SS1465

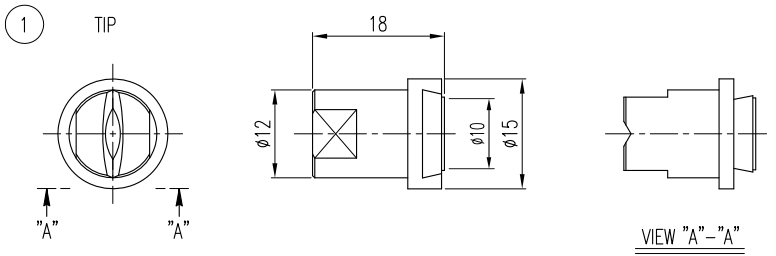
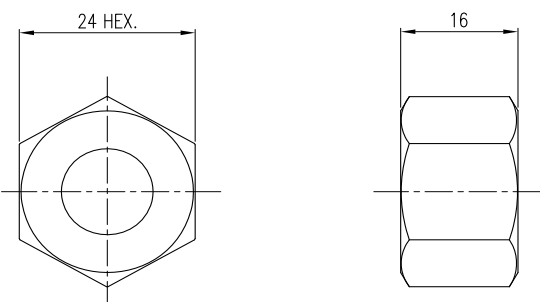
타입 (TIP) 도면번호 재질 유량 각도



2 BODY



3 CAP



GDF 5M< 958 9F				BCNN@9		
				5GG9A 6@9 fhjdZ 6cXm		
				Z FYUJbYfE		
				H&D		
% GH8	K cf_ Fc''	9blfm	Hcd	? 8H?% +\$(& GG%(*)	? 8HD% +\$(& GG%(*)	
			6cftca	? 8H?% +\$(& GG%(&)	? 8HD% +\$(& GG%(&)	
		8Y J Yfm	Hcd	? 8H?% +\$(& GG%(&)	? 8HD% +\$(& GG%(&)	
			6cftca	? 8H?% +\$(& GG%(*)	? 8HD% +\$(& GG%(*)	
	=A F/ 6l F	9blfm	Hcd	? 8H?% +\$(& GG&* *)	? 8HD% +\$(& GG&* *)	
			6cftca	? 8H?% +\$(& GG&* *)	? 8HD% +\$(& GG&* *)	
		Ghfjd	8Y J Yfm	Hcd	? 8H?% +\$(& GG%(*)	? 8HD% +\$(& GG%(*)
				6cftca	? 8H?% +\$(& GG%(*)	? 8HD% +\$(& GG%(*)
			6cftca	? 8H?% +%S' !GG(&*) fl #, "L	? 8HD% +%S' !GG(&*)	

3	CAP(KCA167042-SS)	SUS303		
2	BODY(KB0167042-304SS)	SUS304		
1	TIP(KDTP___-SS 167042)	SUS303		
ITEM	COMPONENT	MATERIAL	Q'TY	REMARKS
DESC.	KDT167042-SS ____ DOVE TAIL NOZZLE	CUSTOMER : -		

지시의 용접치수 절삭가공치수의 지시와 일반치수 허용차 (KS B ISO2768-1 중급)

	구 분	0.5 이상 3 이하	3 을초과 6 이하	6 을초과 30 이하	30 을초과 120 이하	120 을초과 400 이하
	허용 차	±0.1	±0.1	±0.2	±0.3	±0.5
지시외 모서리부분	SURFACE ROUGHNESS (KS B 0617)					
C= R=	다듬질기호	~	▽	▽▽	▽▽▽	▽▽▽▽
	Rmax		100S	25S	6.3S	0.8S

SPECIFICATION

PRESSURE (XXX) (kg/cm ²)	SPRAY ANGLE (±7°)	(xxx)~(xxx)~(xxx)
	(XXX)~(XXX)~(XXX)	
	CAPACITY (ℓ/min ±7%)	

APP BY. CH BY. DES BY. PRODUCT NAME :

J.M.LEE Y.M.KO H.D.KIM

Spraying Systems Co., Korea
Experts in Spray Technology

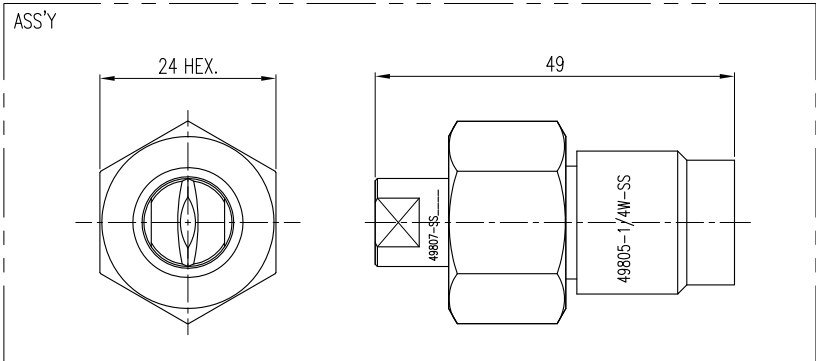
SCALE :	CREATE DATE :
1:1	2016.05.26
THIRD ANGLE	DWG. NO. :
	56167-042-C1

ECO NO.	DATE	REVISION & DESCRIPTION	REVWED	CHECKED

3년연 TCM #4, #5 STD 도브테일 노즐

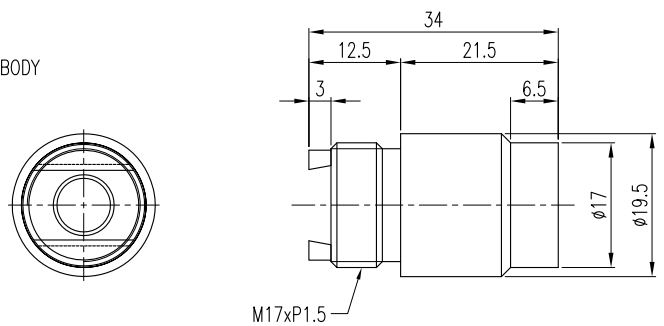
KDTP167103-SS1565

타입(TIP) 도면번호 재질 유량 각도



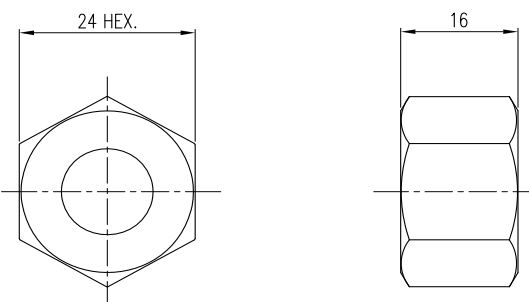
2

BODY



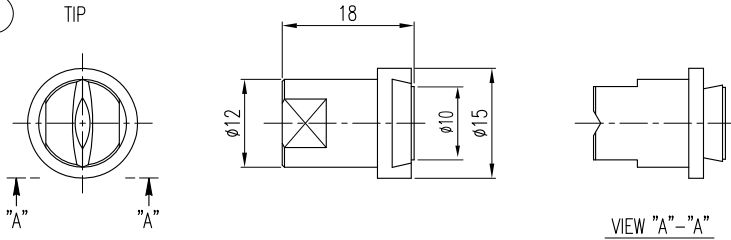
3

CAP



1

TIP



SPRAY HEADER 위치 구분				NOZZLE		
				ASSEMBLE (Tip+Body+Retainer)		TIP
#4,#5 STD	Work Roll	Entry	Top	KDT167103-SS1565	KDTP167103-SS1565	
			Bottom	KDT167103-SS1525	KDTP167103-SS1525	
	IMR&BUR	Entry	Top	KDT167042-SS1465	KDTP167042-SS1465	
			Bottom	KDT167042-SS1465	KDTP167042-SS1465	
Strip	Delivery	Top	KDT167103-SS1425	KDTP167103-SS1425		

3	CAP(KCA167042-SS)	SUS303		
2	BODY(KB0167042-304SS)	SUS304		
1	TIP(KDTP___-SS 167042)	SUS303		
ITEM	COMPONENT	MATERIAL	Q'TY	REMARKS

DESC.	KDT167042-SS ____	CUSTOMER : -		
	DOVE TAIL NOZZLE			

APP BY.	CH BY.	DES BY.	PRODUCT NAME :	
J.M.LEE	Y.M.KO	H.D.KIM		

	Spraying Systems Co., Korea Experts in Spray Technology	SCALE :	CREATE DATE :
		1:1	2016.05.26
		THIRD ANGLE	DWG. NO. :
			56167-042-C1

지시와 용접치수 절삭가공치수의 지시와 일반치수 허용차 (KS B ISO2768-1 중급)

a=	구 분	0.5 이상 3 이하	3 을초과 6 이하	6 을초과 30 이하	30 을초과 120 이하	120 을초과 400 이하
	허용 차	±0.1	±0.1	±0.2	±0.3	±0.5
지시와 모서리부분	SURFACE ROUGHNESS (KS B 0617)					
C=	다듬질기호	~	▽	▽▽	▽▽▽	▽▽▽▽
R=	Rmax		100S	25S	6.3S	0.8S

SPECIFICATION

PRESSURE (XXX) (kg/cm ²)	SPRAY ANGLE (±7°)
	(xxx)~(xxx)~(xxx)
	(XXX)~(XXX)~(XXX)
CAPACITY (ℓ/min ±7%)	

A Guide To Spray Technology for Steel Mills



Spraying Systems Co.
Experts in Spray Technology



Spray
Nozzles



Spray
Control



Spray
Analysis



Spray
Fabrication

Spraying Systems Co.

Global Manufacturing and Sales



Legend



World Headquarters
Wheaton, IL USA



Sales Offices



Manufacturing Locations
Hudson, NH USA
Wheaton, IL USA
Belgium
Brazil
China
Germany
India
Italy
Japan
Korea



A Guide To Spray Technology for Steel Mills

TABLE OF CONTENTS

Product	Primary Application	Page No.
CasterJet® Nozzles	Cooling/Continuous Casting	2
26010 Air Atomizing		5
FullJet® Nozzles	Cooling/Casting	6
HHX FullJet		7
HHCC FullJet		8
Standard/Square/Wide Angle		10
UniJet®		11
Vaneless		11
Oval		11
Large capacity DistroJet®		12
P45075		12
VeeJet® Nozzles	Lubrication/Cooling/Strip Wash-Off	22
Quick VeeJet, UniJet		23
Dovetail VeeJet		34
18897 Dovetail		36
XT VeeJet		39
Rectangular VeeJet		40
DescaleJet® Nozzles	Descaling/Hot Strip Mill	41
AA214		47
26180/26190/218		50
Optimizing Spray Applications in Your Mill		43
Flowline of Steelmaking		44
Areas of Your Mill that May Benefit from Spray System Automation		46
FlatJet® Nozzles	StripWash-Off/Hot Strip Mill	54
FloodJet® Nozzles		54
WashJet® Nozzles	Strip Wash-Off/Hot Strip Mill	58
Laminar Flow	Run-Off Table/Hot Strip Mill	60
Solid stream version		60
Slit type		60
Spray Headers	Lubrication/Strip Wash-Off/Cold Strip Mill	61
Automatic Brush Header		61
Manual Brush Header		61
WindJet® Air Control Nozzles	Strip Blow-Off/Cold Strip Mill	63
WindJet Nozzles		63
Air Knife		65
Air Atomizing & Automatic		
AutoJet® Spray Controllers	Spangling/Cold Strip Mill	66
VAU/VMAU		67
J-Series Air Atomizing		68
WhirlJet® Spray Nozzles	Dust Control/Gas Cooling	78
SpiralJet® Spray Nozzles	Dust Control/Gas Cooling	79
FloMax® Nozzles and AutoJet® Emission Control/		
Gas Conditioning System	Scrubber/Gas Conditioning	86
Self Cleaning Spray Header		88
Wet Oil Spray Header 및 Automatic Spray Gun		90
Air-Wiper & System		92
Thickening Nozzle & 저압용 하부 Fullcone Nozzle		96



Spraying Systems Co.®
Experts in Spray Technology



Spray
Nozzles



Spray
Control



Spray
Analysis



Spray
Fabrication



DOVETAIL VEEJET NOZZLES - 일정하고 반복적인 스프레이가 스틸 품질 개선에 기여

1/4"와 3/8" Dovetail VeeJet 노즐에서 Dovetail 홈의 특징은 고무 seal이 없이 반복적인 패턴의 포지셔닝을 제공하는데 있다. 자가 배열(Self-Aligning) 및 호환이 가능한 스프레이 팁은 노즐 분해 후에도 매번 정확히 배열되도록 5°의 오프셋으로 되어있다. 스프레이 팁은 Body 안으로 미끄러져 제자리에 위치하여 캡의 조립을 용이하게 하고 팁을 안정되게 고정한다.

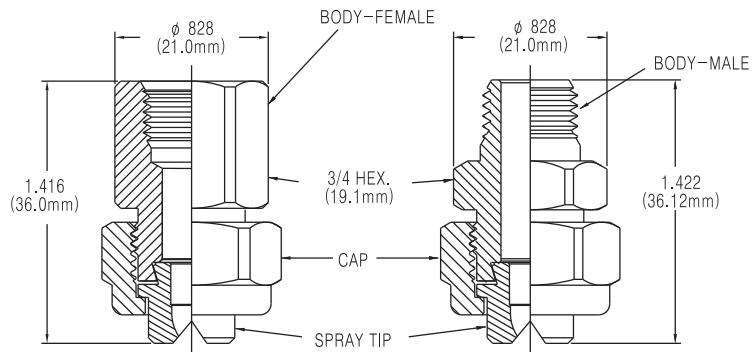
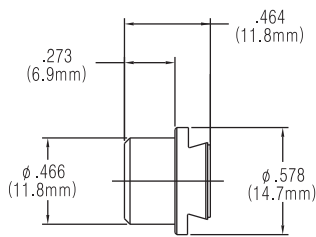


- 40 psi에서 0.067 ~ 0.80 gpm (3bar에서 0.26 ~3.03 l /min) 범위의 소유량 버전
- 40 psi 에서 0.80 ~ 7 gpm (3 bar에서 3.03 ~27.63 l /min) 범위의 대유량 버전
- Brass, 303 또는 316 Stainless Steel 재질 선택 가능
- 65°, 80°, 95° 그리고 110°의 스프레이 각도

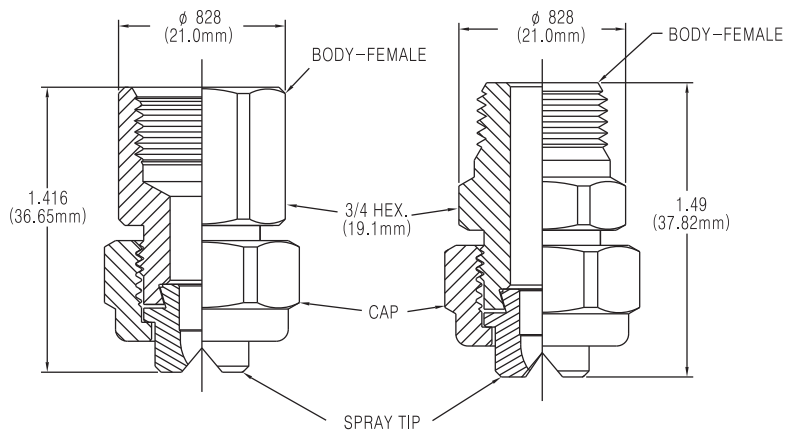
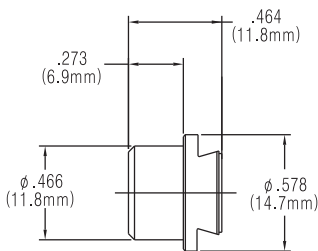
ORDERING INFO

Dovetail VeeJet Spray Nozzle				
49805 - 3/8 M - SS + 49807 - SS 6504				
Assembly No.	Nozzle Body Material	Nozzle No.	Tip Material Code	Spray No.

DIMENSIONS - 1/4" 50870 DOVETAIL



DIMENSIONS - 3/8" 49805 DOVETAIL





PERFORMANCE - 1/4" & 3/8" DOVETAIL NOZZLES

*압력 단위는 bar

Spray Nozzle No.	Capacity (Liters per minute)*						Spray Angle Degree at 3 bar
	2	3	4	5.5	7	10	
49805-3/8-0501	.34	.40	.45	.53	.61	.71	5
50870-1/4-0501							
49805-3/8-1501	.34	.40	.45	.53	.61	.71	15
50870-1/4-1501							
49805-3/8-250067	.23	.26	.30	.34	.42	.48	25
50870-1/4-250067							
49805-3/8-25015	.49	.60	.67	.79	.91	1.07	25
50870-1/4-25015							
49805-3/8-65015	.49	.60	.67	.79	.91	1.07	65
50870-1/4-65015							
49805-3/8-6502	.64	.79	.91	1.06	1.20	1.40	65
50870-1/4-6502							
49805-3/8-6504	1.30	1.60	1.80	2.16	2.40	2.90	65
50870-1/4-6504							
49805-3/8-6506	1.90	2.40	2.70	3.22	3.60	4.30	65
50870-1/4-6506							
49805-3/8-6508	2.60	3.20	3.60	4.28	4.80	5.80	65
50870-1/4-6508							
49805-3/8-8001	.26	.38	.45	.53	.61	.72	80
50870-1/4-8001							
49805-3/8-8002	.64	.79	.91	1.06	1.20	1.40	80
50870-1/4-8002							
49805-3/8-8004	1.30	1.60	1.80	2.16	2.40	2.90	80
50870-1/4-8004							
49805-3/8-8006	1.90	2.40	2.70	3.22	3.60	4.30	80
50870-1/4-8006							
49805-3/8-8008	2.60	3.20	3.60	4.28	4.80	5.80	80
50870-1/4-8008							
49805-3/8-9502	.64	.79	.91	1.06	1.20	1.40	95
50870-1/4-9502							
49805-3/8-9504	1.30	1.60	1.80	2.16	2.40	2.90	95
50870-1/4-9504							
49805-3/8-9506	1.90	2.40	2.70	3.22	3.60	4.30	95
50870-1/4-9506							
49805-3/8-9508	2.60	3.20	3.60	4.28	4.80	5.80	95
50870-1/4-9508							
49805-3/8-1100067	.23	.26	.30	.34	.42	.48	110
50870-1/4-1100067							
49805-3/8-11002	.64	.79	.91	1.06	1.20	1.40	110
50870-1/4-11002							
49805-3/8-11004	1.30	1.60	1.80	2.16	2.40	2.90	110
50870-1/4-11004							
49805-3/8-11006	1.90	2.40	2.70	3.22	3.60	4.30	110
50870-1/4-11006							
49805-3/8-11008	2.60	3.20	3.60	4.28	4.80	5.80	110
50870-1/4-11008							

Spray Nozzle No.	Capacity (Liters per minute)*						Spray Angle Degree at 3 bar
	2	3	4	5.5	7	10	
49805-3/8-4050	16.11	19.73	22.78	27.90	30.13	36.02	45
50870-1/4-4050							
49805-3/8-5030	9.66	11.83	13.66	16.73	18.07	21.60	50
50870-1/4-5030							
49805-3/8-5050	16.11	19.73	22.78	27.90	30.13	36.02	50
50870-1/4-5050							
49805-3/8-5070	22.56	27.63	31.91	37.42	42.22	50.46	50
50870-1/4-5070							
49805-3/8-6050	16.11	19.73	22.78	27.90	30.13	36.02	60
50870-1/4-6050							
49805-3/8-6510	3.22	3.95	4.56	5.35	6.03	7.21	65
50870-1/4-6510							
49805-3/8-6515	4.82	5.92	6.84	8.02	9.08	10.81	65
50870-1/4-6515							
49805-3/8-6520	6.44	7.89	9.11	11.16	12.05	14.41	65
50870-1/4-6520							
49805-3/8-6530	9.66	11.83	13.66	16.73	18.07	21.60	65
50870-1/4-6530							
49805-3/8-6540	12.88	15.78	18.22	22.31	24.10	28.80	65
50870-1/4-6540							
49805-3/8-6550	16.11	19.73	22.78	27.90	30.13	36.02	65
50870-1/4-6550							
49805-3/8-7550	16.11	19.73	22.78	27.90	30.13	36.02	75
50870-1/4-7550							
49805-3/8-8010	3.22	3.95	4.56	5.35	6.03	7.21	80
50870-1/4-8010							
49805-3/8-8015	4.82	5.92	6.84	8.02	9.08	10.81	80
50870-1/4-8015							
49805-3/8-8020	6.44	7.89	9.11	11.16	12.05	14.41	80
50870-1/4-8020							
49805-3/8-8030	9.66	11.83	13.66	16.73	18.07	21.60	80
50870-1/4-8030							
49805-3/8-8040	12.88	15.78	18.22	22.31	24.10	28.80	80
50870-1/4-8040							
49805-3/8-8050	16.11	19.73	22.78	27.90	30.13	36.02	80
50870-1/4-8050							
49805-3/8-9510	3.22	3.95	4.56	5.35	6.03	7.21	95
50870-1/4-9510							
49805-3/8-9515	4.82	5.92	6.84	8.02	9.08	10.81	95
50870-1/4-9515							
49805-3/8-9520	6.44	7.89	9.11	11.16	12.05	14.41	95
50870-1/4-9520							
49805-3/8-9530	9.66	11.83	13.66	16.73	18.07	21.60	95
50870-1/4-9530							
49805-3/8-9540	12.88	15.78	18.22	22.31	24.10	28.80	95
50870-1/4-9540							
49805-3/8-9550	16.11	19.73	22.78	27.90	30.13	36.02	95
50870-1/4-9550							
49805-3/8-11040	12.88	15.78	18.22	22.31	24.10	28.80	110
50870-1/4-11040							
49805-3/8-11050	16.11	19.73	22.78	27.90	30.13	36.02	110
50870-1/4-11050							





LUBRICATION / COOLING STRIP WASH-OFF

18897 Dovetail **VeeJet**[®]

18897 DOVETAIL VEEJET NOZZLES

- 고온의 압연 냉각에서 반복적이고 신뢰할 수 있는 성능

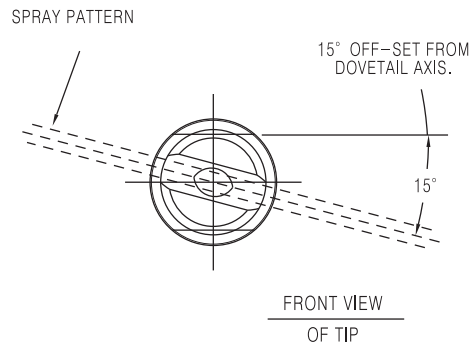
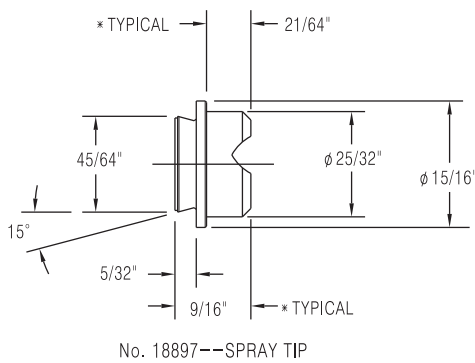
1/4" 그리고 3/8" Dovetail VeeJet 노즐과 유사한, 18897 Dovetail VeeJet 노즐은 교체 또는 유지보수 후 변경되지 않는 성능을 보장하는 자가 배열(Self-Aligning) 노즐이고 빠르게 팁을 교체할 수 있다. 간단하게 캡을 풀어, 팁을 교체하고 팁을 안정되게 캡을 고정한다. 스프레이 분사시 문제없는 스프레이 성능을 위해 Dovetail 축으로부터 15°의 오프셋을 지닌다. 노즐 Body는 헤더 안으로 용접되고 고무 Seal이 사용되지 않기 때문에, 18897 Dovetail VeeJet 노즐은 고온의 어플리케이션에 이상적이다.



사양 :

- 40 psi에서 2 ~ 20 gpm (3bar에서 7.6 ~ 75.7 l/min) 범위의 유량
- 용접 그리고 Standard Body 커넥션 선택 가능
- Brass, 303 Stainless Steel 그리고 경화 Stainless Steel 재질 선택 가능

DIMENSIONS



APPROX. TIP WEIGHT - 1.4 oz.

- * 팁 사이즈 -- 200을 위한 길이 19/32"
- ** 팁 사이즈 -- 200을 위한 길이 53/64"

ORDERING INFO

18897 Dovetail VeeJet Spray Nozzle

18897 - 5050 SS

Spray Tip
Prefix

Spray Tip
Size

Tip Material
Code



Spraying Systems Co.
Experts in Spray Technology

VISIT OUR WEB SITE: WWW.SPRAY.CO.KR

EMAIL: INFO@SPRAY.CO.KR



PERFORMANCE - 18897 DOVETAIL NOZZLES

*압력 단위는 bar

Spray Tip No.		Equiv. Orifice Dia. (mm)	Capacity (Liters per minute)*							Spray Angle Degree*	
Spray Tip Prefix	Spray Tip Size		0.5	1	2	4	6	8	10	3	5
18897-	1520	2.8	3.2	4.6	6.4	9.1	11.2	12.9	14.4	15	19
	1525	3.2	4.0	5.7	8.1	11.4	14.0	16.1	18.0	15	19
	1530	3.6	4.8	6.8	9.7	13.7	16.7	19.3	22	15	19
	1540	4.0	6.4	9.1	12.9	18.2	22	26	29	15	19
	1550	4.4	8.1	11.4	16.1	23	28	32	36	15	19
	1560	4.8	9.7	13.7	19.3	27	33	39	43	15	19
	1580	5.6	12.9	18.2	26	36	45	52	58	15	19
	15120	6.8	19.3	27	39	55	67	77	86	15	17
18897-	2520	2.8	3.2	4.6	6.4	9.1	11.2	12.9	14.4	25	32
	2525	3.2	4.0	5.7	8.1	11.4	14.0	16.1	18.0	25	32
	2530	3.6	4.8	6.8	9.7	13.7	16.7	19.3	22	25	32
	2540	4.0	6.4	9.1	12.9	18.2	22	26	29	25	32
	2550	4.4	8.1	11.4	16.1	23	28	32	36	25	32
	2560	4.8	9.7	13.7	19.3	27	33	39	43	25	33
	2580	5.6	12.9	18.2	26	36	45	52	58	25	33
	25100	6.4	16.2	23	32	46	56	64	72	25	33
	25120	6.8	19.3	27	39	55	67	77	86	25	33
	25200	8.7	32	46	64	91	112	129	144	25	33
18897-	4020	2.8	3.2	4.6	6.4	9.1	11.2	12.9	14.4	40	45
	4025	3.2	4.0	5.7	8.1	11.4	14.0	16.1	18.0	40	45
	4030	3.6	4.8	6.8	9.7	13.7	16.7	19.3	22	40	45
	4040	4.0	6.4	9.1	12.9	18.2	22	26	29	40	45
	4050	4.4	8.1	11.4	16.1	23	28	32	36	40	43
	4060	4.8	9.7	13.7	19.3	27	33	39	43	40	43
	4080	5.6	12.9	18.2	26	36	45	52	58	40	43
	4090	6.0	14.6	21	29	41	50	58	65	40	43
	40100	6.4	16.2	23	32	46	56	64	72	40	43
	40120	6.8	19.3	27	39	55	67	77	86	40	43
40200	8.7	32	46	64	91	112	129	144	40	44	
18897-	5020	2.8	3.2	4.6	6.4	9.1	11.2	12.9	14.4	50	55
	5025	3.2	4.0	5.7	8.1	11.4	14.0	16.1	18.0	50	54
	5030	3.6	4.8	6.8	9.7	13.7	16.7	19.3	22	50	54
	5040	4.0	6.4	9.1	12.9	18.2	22	26	29	50	53
	5050	4.4	8.1	11.4	16.1	23	28	32	36	50	53
	5060	4.8	9.7	13.7	19.3	27	33	39	43	50	53
	5080	5.6	12.9	18.2	26	36	45	52	58	50	53
	50120	6.8	19.3	27	39	55	67	77	86	50	53
	50200	8.7	32	46	64	91	112	129	144	50	52





LUBRICATION / COOLING STRIP WASH-OFF

18897 Dovetail **VeeJet®**

PERFORMANCE - 18897 DOVETAIL NOZZLES

*압력 단위는 bar

Spray Tip No.		Equiv. Orifice Dia. (mm)	Capacity (Liters per minute)*							Spray Angle Degree*	
Spray Tip Prefix	Spray Tip Size		0.5	1	2	4	6	8	10	3	5
18897-	6520	2.8	3.2	4.6	6.4	9.1	11.2	12.9	14.4	65	72
	6525	3.2	4.0	5.7	8.1	11.4	14.0	16.1	18.0	65	72
	6530	3.6	4.8	6.8	9.7	13.7	16.7	19.3	22	65	72
	6540	4.0	6.4	9.1	12.9	18.2	22	26	29	65	72
	6550	4.4	8.1	11.4	16.1	23	28	32	36	65	73
	6560	4.8	9.7	13.7	19.3	27	33	39	43	65	73
	6580	5.6	12.9	18.2	26	36	45	52	58	65	74
	65100	6.4	16.2	23	32	46	56	64	72	65	72
	65120	6.8	19.3	27	39	55	67	77	86	65	69
65200	8.7	32	46	64	91	112	129	144	65	69	
18897-	8020	2.8	3.2	4.6	6.4	9.1	11.2	12.9	14.4	80	83
	8025	3.2	4.0	5.7	8.1	11.4	14.0	16.1	18.0	80	84
	8030	3.6	4.8	6.8	9.7	13.7	16.7	19.3	22	80	84
	8040	4.0	6.4	9.1	12.9	18.2	22	26	29	80	85
	8050	4.4	8.1	11.4	16.1	23	28	32	36	80	85
	8060	4.8	9.7	13.7	19.3	27	33	39	43	80	86
	8080	5.6	12.9	18.2	26	36	45	52	58	80	89
	80120	6.8	19.3	27	39	55	67	77	86	80	83
	80200	8.7	32	46	64	91	112	129	144	80	82
18897-	11020	2.8	3.2	4.6	6.4	9.1	11.2	12.9	14.4	110	117
	11025	3.2	4.0	5.7	8.1	11.4	14.0	16.1	18.0	110	117
	11030	3.6	4.8	6.8	9.7	13.7	16.7	19.3	22	110	117
	11040	4.0	6.4	9.1	12.9	18.2	22	26	29	110	117
	11050	4.4	8.1	11.4	16.1	23	28	32	36	110	117
	11060	4.8	9.7	13.7	19.3	27	33	39	43	110	116
	11080	5.6	12.9	18.2	26	36	45	52	58	110	116
	110120	6.8	19.3	27	39	55	67	77	86	110	116
	110200	8.7	32	46	64	91	112	129	144	110	116



Spraying Systems Co.®
Experts in Spray Technology

VISIT OUR WEB SITE: WWW.SPRAY.CO.KR
EMAIL: INFO@SPRAY.CO.KR