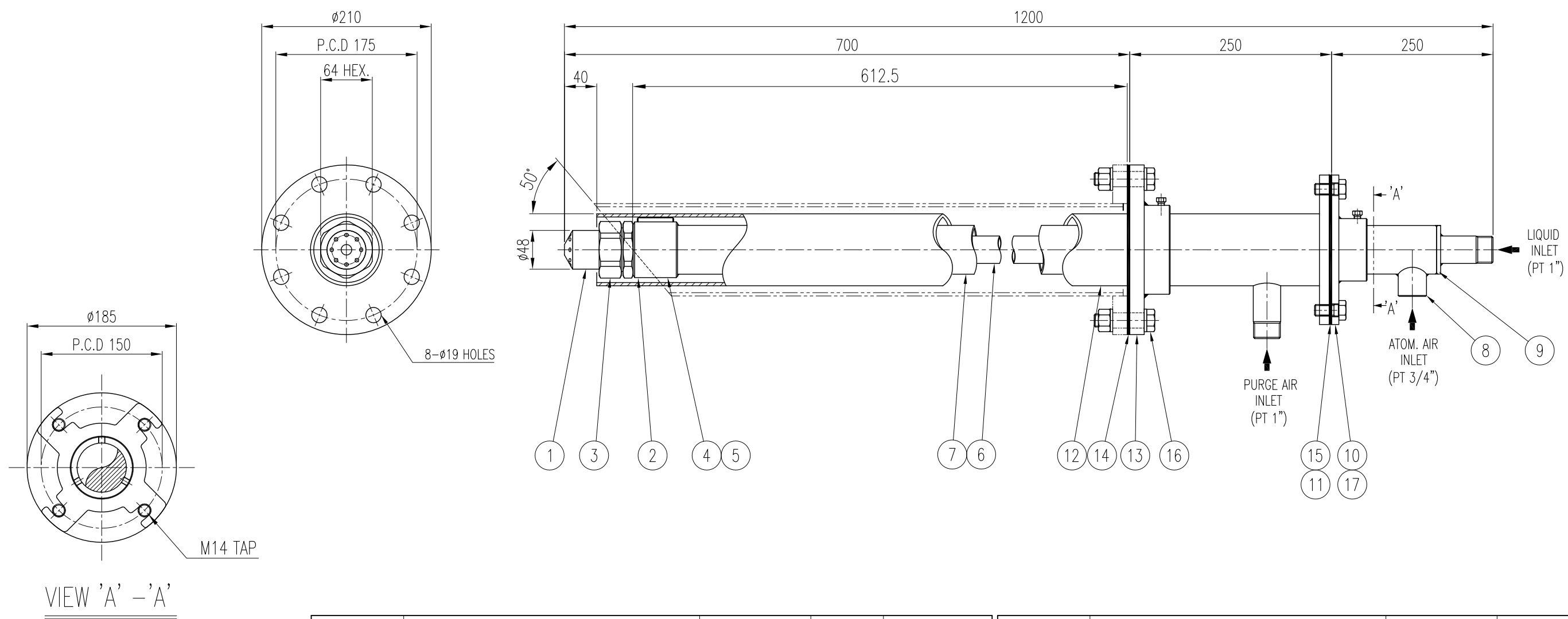


NO.	DATE	REVISION & DESECIPTION	REVIWED	CHECKED
△				
△				



- SPECIFICATION -  
 AIR PRESSURE : 4kg/cm<sup>2</sup>  
 RANGE : ±0.5 kg/cm<sup>2</sup>  
 LIQUID PRESSURE : 4kg/cm<sup>2</sup>  
 RANGE : ±0.5 kg/cm<sup>2</sup>  
 FLOW RATE : 950L/hr

17	BOLT M14x30L	SUS304	4		8	AIR SOCKET (3/4")	SUS316L	1	
16	BOLT M16x70L/NUT/FLAT WASHER	SUS304	8		7	OUTSIDE PIPE (50A x Sch80)	SUS316L	1	
15	GASKET (80A JIS 10K FF)	NON-ASB.	1		6	INSIDE PIPE (25A x Sch40)	SUS316L	1	
14	GASKET (100A JIS 10K FF)	NON-ASB.	1		5	OUTSIDE PIPE ADAPTER	SUS316L	1	
13	COOLING FLANGE(100A JIS 10K BL.FF)	SUS304	1		4	NOZZLE ADAPTER	SUS316L	1	
12	COOLING PIPE (80A x Sch20)	SUS304	1		3	AIR CAP NUT (KCP28548-104-316LSS )	SUS316L	1	
11	COUNTER FLANGE(80A)	SUS304	1		2	FLUID TIP SUB-ASS'Y (KFMT-151233-316LSS-01)	SUS316L	1	
10	SPECIAL FLANGE (80A)	SUS304	1		1	AIR CAP SUB-ASS'Y (FMA-8-188-55-SILCRB)	RBSIC	1	IMPORT
9	END PLATE	SUS316L	1		ITEM	COMPONENT	MATERIAL	Q'TY	REMARKS
ITEM	COMPONENT	MATERIAL	Q'TY	REMARKS	DESC.	KFM5-151233-RBSIC-01		CUSTOMER : -	
					Flomax Air atomizing Nozzle			New Part No. : KFM5-151233-RBSIC-01	
					APP BY.	CH BY.	DES BY.	USA DWG. NO.	BLANK DWG. NO.
					B.S.KIM	J.M.LEE	J.H.YOU		
					<b>Spraying Systems Co., Korea</b>			SCALE : 1/8	DATE : 2017.04.21
								DWG. NO. 56151-233-C3	

지시외 용접치수	절삭가공치수의 지시외 일반치수 허용차 (KS B ISO2768-1 중급)					
	구 분	0.5 이상 3 이하	3 을초과 6 이하	6 을초과 30 이하	30 을초과 120 이하	120 을초과 400 이하
	허용 차	±0.1	±0.1	±0.2	±0.3	±0.5
지시외 모서리부분	SURFACE ROUGHNESS (KS B 0617)					
C= R=	다듬질기호	~	▽	▽▽	▽▽▽	▽▽▽▽
	Rmax		100S	25S	6.3S	0.8S

SPECIFICATION	
PRESSURE ( XXX ) (kg/cm <sup>2</sup> )	SPRAY ANGLE (±7°) (XXX) ~ (XXX) ~ (XXX) (XXXX) ~ (XXXX) ~ (XXXX) CAPACITY (l/hr ±20%)

DESC. KFM5-151233-RBSIC-01  
 Flomax Air atomizing Nozzle

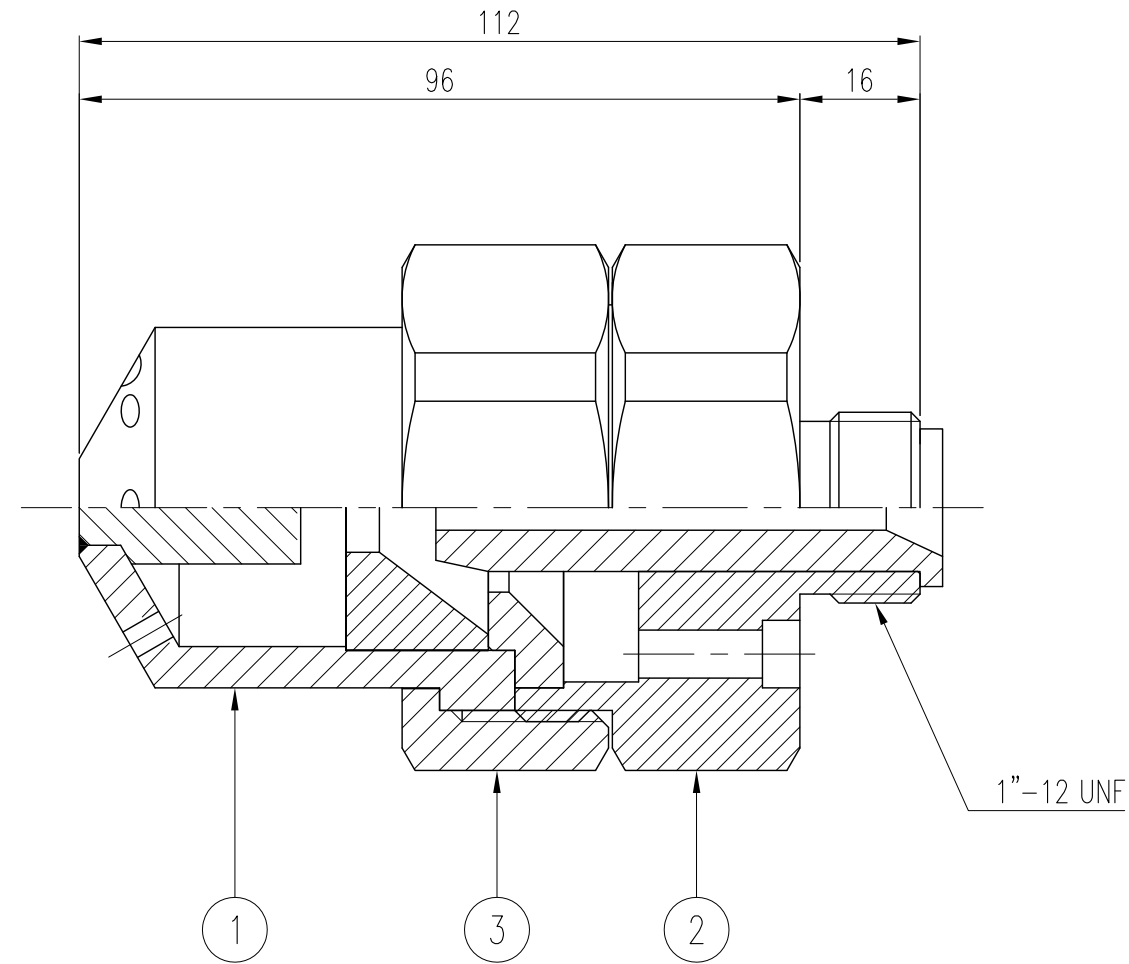
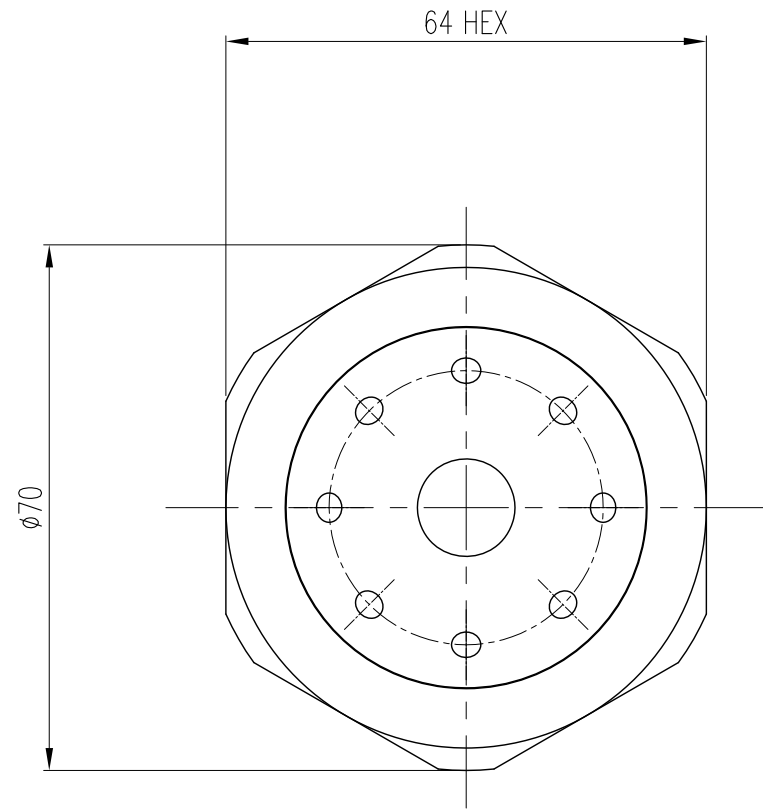
APP BY. B.S.KIM    CH BY. J.M.LEE    DES BY. J.H.YOU

USA DWG. NO.    BLANK DWG. NO.

SCALE : 1/8    DATE : 2017.04.21

DWG. NO. 56151-233-C3

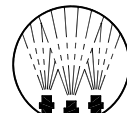
NO.	DATE	REVISION & DESECIPTION	REVIWED	CHECKED
△				
△				



— SPECIFICATION —

AIR PRESSURE : 4kg/cm<sup>2</sup>  
RANGE : ±0.5 kg/cm<sup>2</sup>  
LIQUID PRESSURE : 4kg/cm<sup>2</sup>  
RANGE : ±0.5 kg/cm<sup>2</sup>  
FLOW RATE : 950L/hr

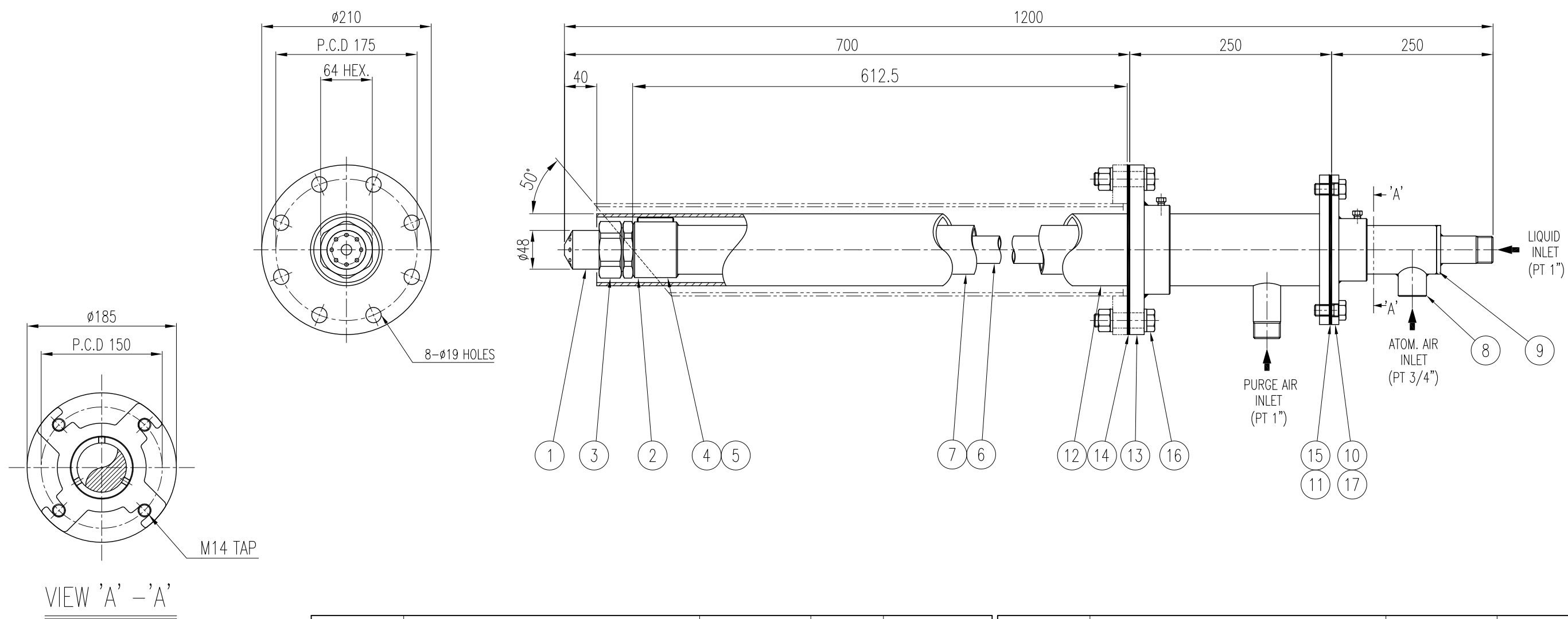
ITEM	COMPONENT	MATERIAL	Q'TY	REMARKS
3	AIR CAP NUT (KCP28548-104-316LSS )	SUS316L	1	
2	FLUID TIP SUB-ASS'Y (KFMT-151233-316LSS-01)	SUS316L	1	
1	AIR CAP SUB-ASS'Y (FMA-8-188-55-SILCRB)	RBSIC	1	IMPORT

DESC.	KFM5-151233-RBSIC-01		CUSTOMER : -	
	Flomax Air atomizing Nozzle		New Part No. : KFM5-151233-RBSIC-01	
APP BY.	CH BY.	DES BY.	USA DWG. NO.	BLANK DWG. NO.
S.H.SHIN	J.M.LEE	J.H.YOU		
 <b>Spraying Systems Co., Korea</b>			SCALE : 1/1.5	DATE : 2017.04.21
			DWG. NO. 56151-233-C4	

지시외 용접치수	절삭가공치수의 지시외 일반치수 허용차 (KS B ISO2768-1 중급)					
	구 분	0.5 이상 3 이하	3 을초과 6 이하	6 을초과 30 이하	30 을초과 120 이하	120 을초과 400 이하
	허 용 차	±0.1	±0.1	±0.2	±0.3	±0.5
지시외 모서리부분	SURFACE ROUGHNESS (KS B 0617)					
C= R=	다듬질기호	~	▽	▽▽	▽▽▽	▽▽▽▽
	Rmax		100S	25S	6.3S	0.8S

SPECIFICATION	
PRESSURE ( XXX ) (kg/cm <sup>2</sup> )	SPRAY ANGLE (±7°) (XXX) ~ (XXX) ~ (XXX)
	(XXXX) ~ (XXXX) ~ (XXXX)
	CAPACITY (ℓ/hr ±7%)

NO.	DATE	REVISION & DESECIPTION	REVIWED	CHECKED
△				
△				



- SPECIFICATION -  
 AIR PRESSURE : 4kg/cm<sup>2</sup>  
 RANGE : ±0.5 kg/cm<sup>2</sup>  
 LIQUID PRESSURE : 4kg/cm<sup>2</sup>  
 RANGE : ±0.5 kg/cm<sup>2</sup>  
 FLOW RATE : 1100L/hr

17	BOLT M14x30L	SUS304	4		8	AIR SOCKET (3/4")	SUS316L	1		
16	BOLT M16x70L/NUT/FLAT WASHER	SUS304	8		7	OUTSIDE PIPE (50A x Sch80)	SUS316L	1		
15	GASKET (80A JIS 10K FF)	NON-ASB.	1		6	INSIDE PIPE (25A x Sch40)	SUS316L	1		
14	GASKET (100A JIS 10K FF)	NON-ASB.	1		5	OUTSIDE PIPE ADAPTER	SUS316L	1		
13	COOLING FLANGE(100A JIS 10K BL.FF)	SUS304	1		4	NOZZLE ADAPTER	SUS316L	1		
12	COOLING PIPE (80A x Sch20)	SUS304	1		3	AIR CAP NUT (KCP28548-104-316LSS )	SUS316L	1		
11	COUNTER FLANGE(80A)	SUS304	1		2	FLUID TIP SUB-ASS'Y (KFMT-151233-316LSS-02)	SUS316L	1		
10	FLANGE (80A)	SUS304	1		1	AIR CAP SUB-ASS'Y (FMA-8-188-55-SILCRB)	RBSIC	1	IMPORT	
9	END PLATE	SUS316L	1		ITEM	COMPONENT	MATERIAL	Q'TY	REMARKS	
ITEM	COMPONENT	MATERIAL	Q'TY	REMARKS	DESC.	KFM5-151233-RBSIC-02		CUSTOMER : -		
					Flomax Air atomizing Nozzle		New Part No. : KFM5-151233-RBSIC-02			
APP BY.		CH BY.		DES BY.		USA DWG. NO.		BLANK DWG. NO.		
B.S.KIM		J.M.LEE		J.H.YOU						
					SCALE : 1/8		DATE : 2017.04.21			
					DWG. NO. 56151-233-C5					

지시외 용접치수	절삭가공치수의 지시외 일반치수 허용차 (KS B ISO2768-1 중급)					
	구 분	0.5 이상 3 이하	3 을초과 6 이하	6 을초과 30 이하	30 을초과 120 이하	120 을초과 400 이하
	허용 차	±0.1	±0.1	±0.2	±0.3	±0.5
지시외 모서리부분	SURFACE ROUGHNESS (KS B 0617)					
C= R=	다듬질기호	~	▽	▽▽	▽▽▽	▽▽▽▽
	Rmax		100S	25S	6.3S	0.8S

SPECIFICATION	
PRESSURE ( XXX ) (kg/cm <sup>2</sup> )	SPRAY ANGLE (±7°) (XXX) ~ (XXX) ~ (XXX) (XXXX) ~ (XXXX) ~ (XXXX) CAPACITY (l/hr ±20%)

DESC. KFM5-151233-RBSIC-02  
Flomax Air atomizing Nozzle

APP BY. B.S.KIM CH BY. J.M.LEE DES BY. J.H.YOU

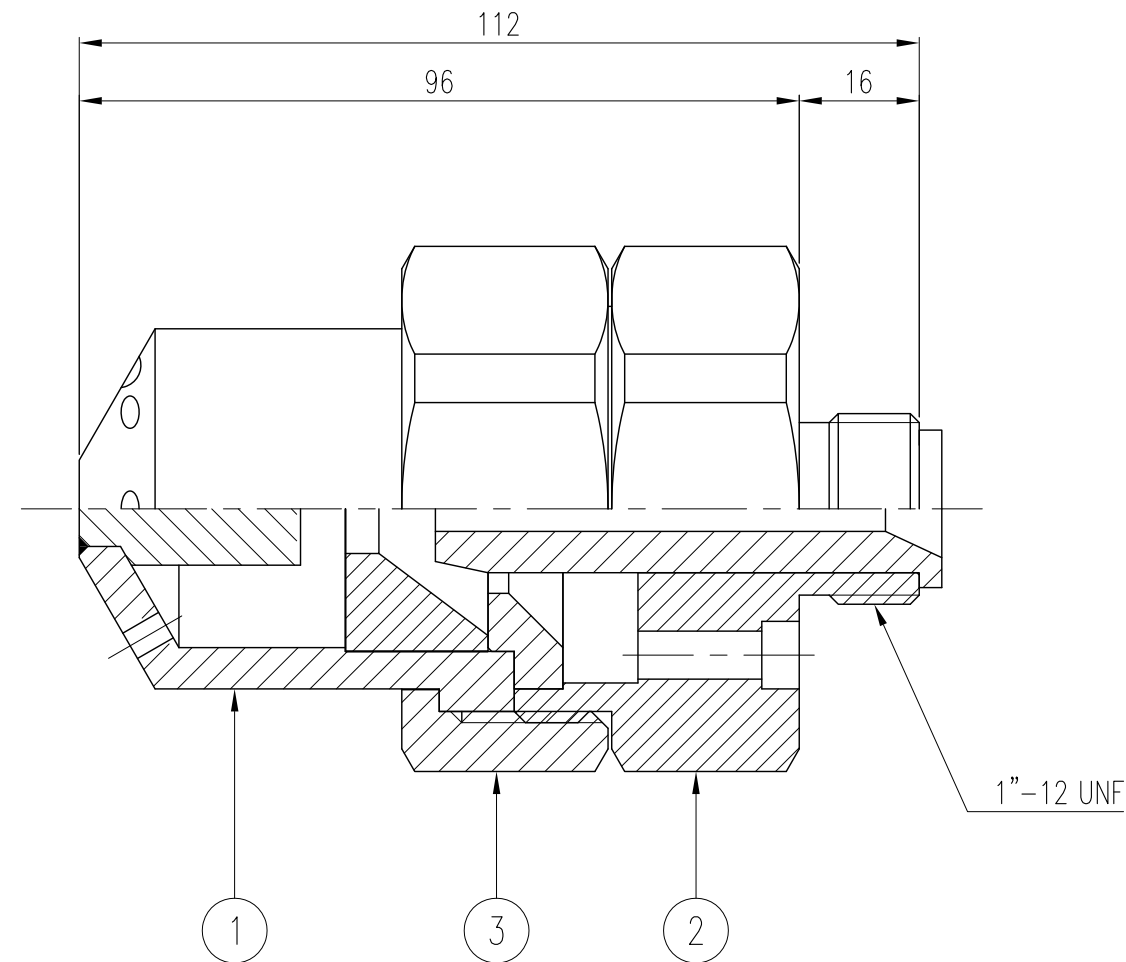
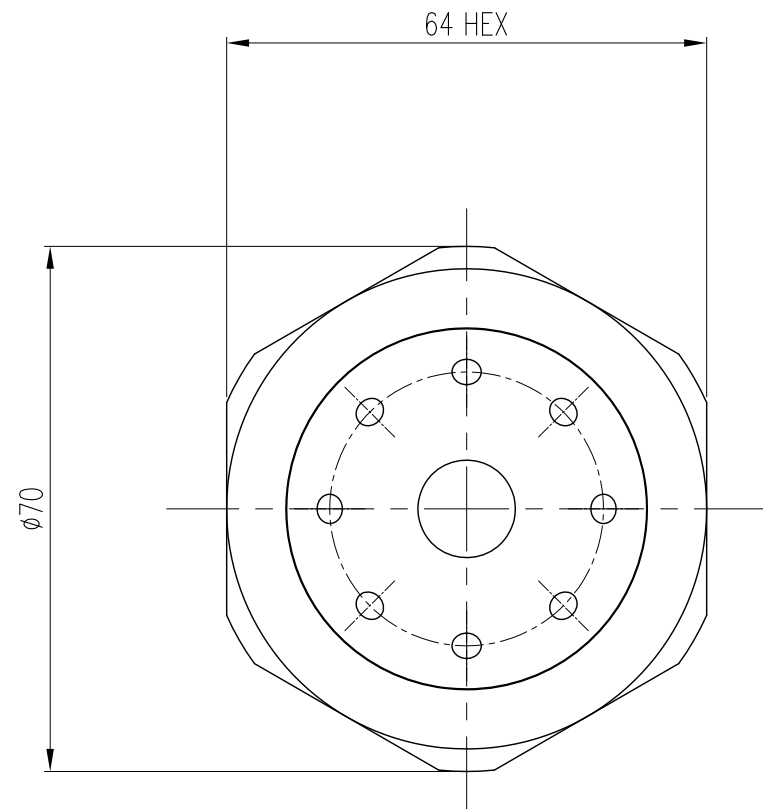
USA DWG. NO. BLANK DWG. NO.

SCALE : 1/8 DATE : 2017.04.21

DWG. NO. 56151-233-C5

**Spraying Systems Co., Korea**

NO.	DATE	REVISION & DESECIPTION	REVIWED	CHECKED
△				
△				



- SPECIFICATION -

AIR PRESSURE : 4kg/cm<sup>2</sup>

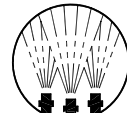
RANGE : ±0.5 kg/cm<sup>2</sup>

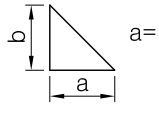
LIQUID PRESSURE : 4kg/cm<sup>2</sup>

RANGE : ±0.5 kg/cm<sup>2</sup>

FLOW RATE : 1100L/hr

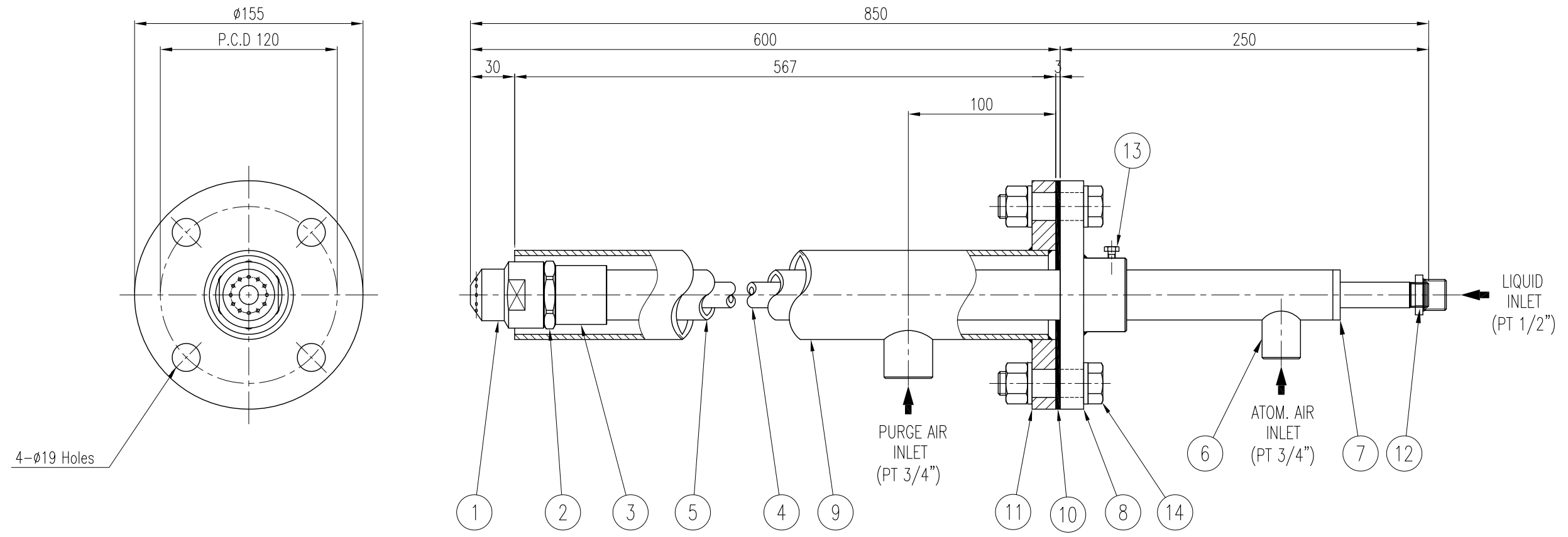
ITEM	COMPONENT	MATERIAL	Q'TY	REMARKS
3	AIR CAP NUT (KCP28548-104-316LSS)	SUS316L	1	
2	FLUID TIP SUB-ASS'Y (KFMT-151233-316LSS-02)	SUS316L	1	
1	AIR CAP SUB-ASS'Y (FMA-8-188-55-SILCRB)	RBSIC	1	IMPORT

DESC.	KFM5-151233-RBSIC-02		CUSTOMER : -	
	Flomax Air atomizing Nozzle		New Part No. : KFM5-151233-RBSIC-02	
APP BY.	CH BY.	DES BY.	USA DWG. NO.	BLANK DWG. NO.
S.H.SHIN	J.M.LEE	J.H.YOU		
 <b>Spraying Systems Co., Korea</b>			SCALE : 1/1.5	DATE : 2017.04.21
			DWG. NO. 56151-233-C6	

지시외 용접치수	절삭가공치수의 지시외 일반치수 허용차 (KS B ISO2768-1 중급)					
	구 분	0.5 이상 3 이하	3 을초과 6 이하	6 을초과 30 이하	30 을초과 120 이하	120 을초과 400 이하
	허 용 차	±0.1	±0.1	±0.2	±0.3	±0.5
지시외 모서리부분	SURFACE ROUGHNESS (KS B 0617)					
C= R=	다듬질기호	~	▽	▽▽	▽▽▽	▽▽▽▽
	Rmax		100S	25S	6.3S	0.8S

SPECIFICATION	
PRESSURE ( XXX ) (kg/cm <sup>2</sup> )	SPRAY ANGLE (±7°) (XXX) ~ (XXX) ~ (XXX)
	(XXXX) ~ (XXXX) ~ (XXXX)
	CAPACITY (ℓ/hr ±7%)

NO.	DATE	REVISION & DESECIPTION	REVIWED	CHECKED
△				
△				



- SPECIFICATION -

AIR PRESSURE : 3~4 kg/cm<sup>2</sup>  
 LIQUID PRESSURE : 3~4 kg/cm<sup>2</sup>  
 FLOW RATE : 420L/hr

ITEM	COMPONENT	MATERIAL	Q'TY	REMARKS
14	BOLT M16x65L/NUT/FLAT WASHER	SUS304	4	
13	BOLT (M8)	SUS304	3	
12	BUSHING (3/8" x 1/2")	SUS304	1	
11	FLANGE (50A JIS 10K SO.FF)	SCS13	1	
10	GASKET (50A JIS 10K FF)	NON-ASB.	1	
9	COOLING PIPE (PIPE 50AxSch20)	SUS304	1	
8	FLANGE (50A JIS 10K BL.FF)	SCS13	1	

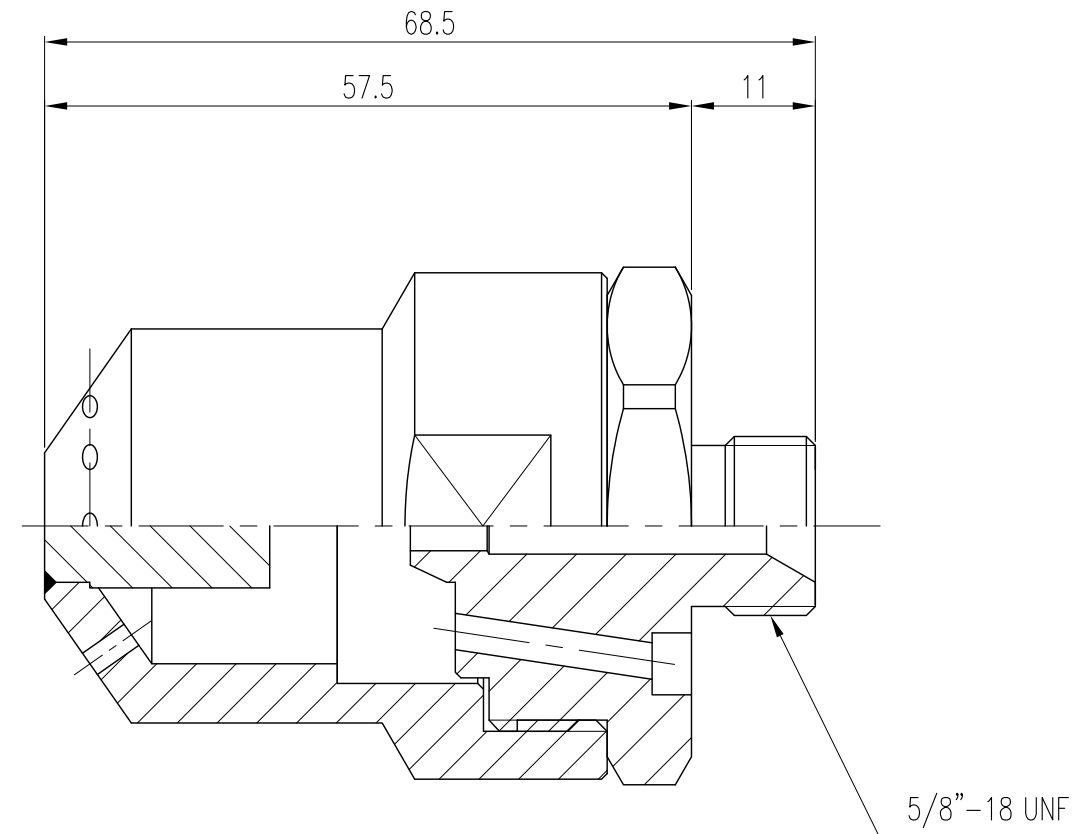
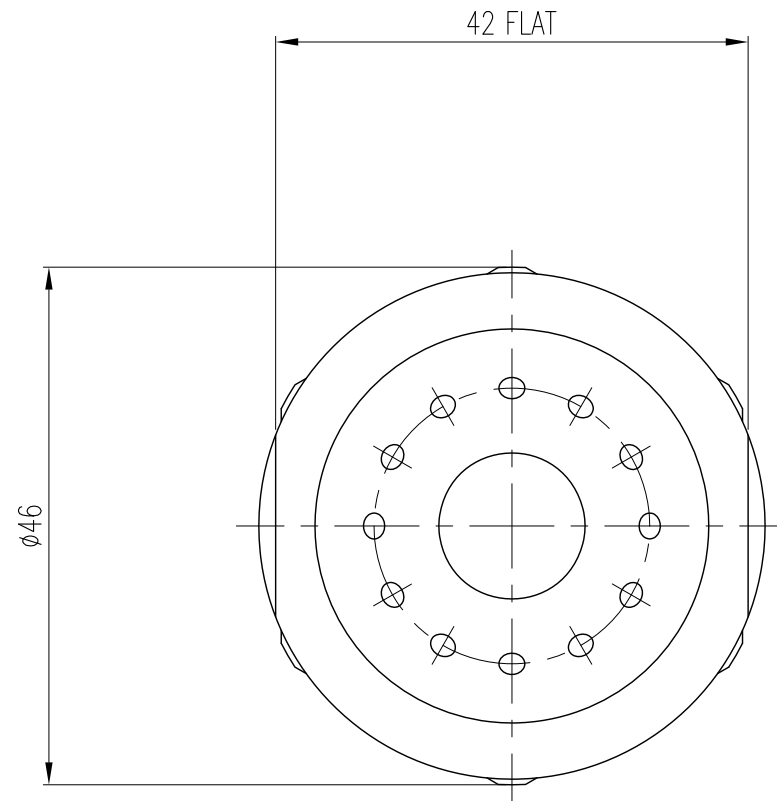
7	END PLATE	SUS316L	1	
6	SOCKET (1/2")	SUS316L	1	
5	OUTSIDE PIPE (1" x Sch40)	SUS316L	1	
4	INSIDE PIPE (3/8" x Sch80)	SUS316L	1	
3	ADAPTER	SUS316L	1	
2	FLUID TIP (KFMNT-200082-316LSS)	SUS316L	1	
1	AIR CAP SUB-ASS'Y (KFMNA-200082-310S)	SUS310	1	
ITEM	COMPONENT	MATERIAL	Q'TY	REMARKS

지시외 용접치수	절삭가공치수의 지시외 일반치수 허용차 (KS B ISO2768-1 중급)					
	구 분	0.5 이상 3 이하	3 을초과 6 이하	6 을초과 30 이하	30 을초과 120 이하	120 을초과 400 이하
	허용 차	±0.1	±0.1	±0.2	±0.3	±0.5
지시외 모서리부분	SURFACE ROUGHNESS (KS B 0617)					
C= R=	다듬질기호	~	▽	▽▽	▽▽▽	▽▽▽▽
	Rmax		100S	25S	6.3S	0.8S

SPECIFICATION	
PRESSURE (XXX) (kg/cm <sup>2</sup> )	SPRAY ANGLE (±7°) (XXX) ~ (XXX) ~ (XXX) (XXXX) ~ (XXXX) ~ (XXXX) CAPACITY (ℓ/hr ±7%)

DESC.	KFMN1-200082-310S Flowmax Air atomizing Nozzle	CUSTOMER :	-
APP BY.	CH BY.	DES BY.	New Part No. : KFMN1-200082-310S
S.H.SHIN	J.M.LEE	J.H.YOU	USA DWG. NO.
<b>Spraying Systems Co., Korea</b>		SCALE :	DATE :
		1/4	2017.04.21
		DWG. NO.	56200-082-C3


NO.	DATE	REVISION & DESECIPTION	REVIWED	CHECKED
△				
△				



- SPECIFICATION -

AIR PRESSURE : 3~4 kg/cm<sup>2</sup>  
LIQUID PRESSURE : 3~4 kg/cm<sup>2</sup>  
FLOW RATE : 420L/hr

ITEM	COMPONENT	MATERIAL	Q'TY	REMARKS
2	FLUID TIP (KFMNT-200082-316LSS)	SUS316L	1	
1	AIR CAP SUB-ASS'Y (KFMNA-200082-310S)	SUS310	1	

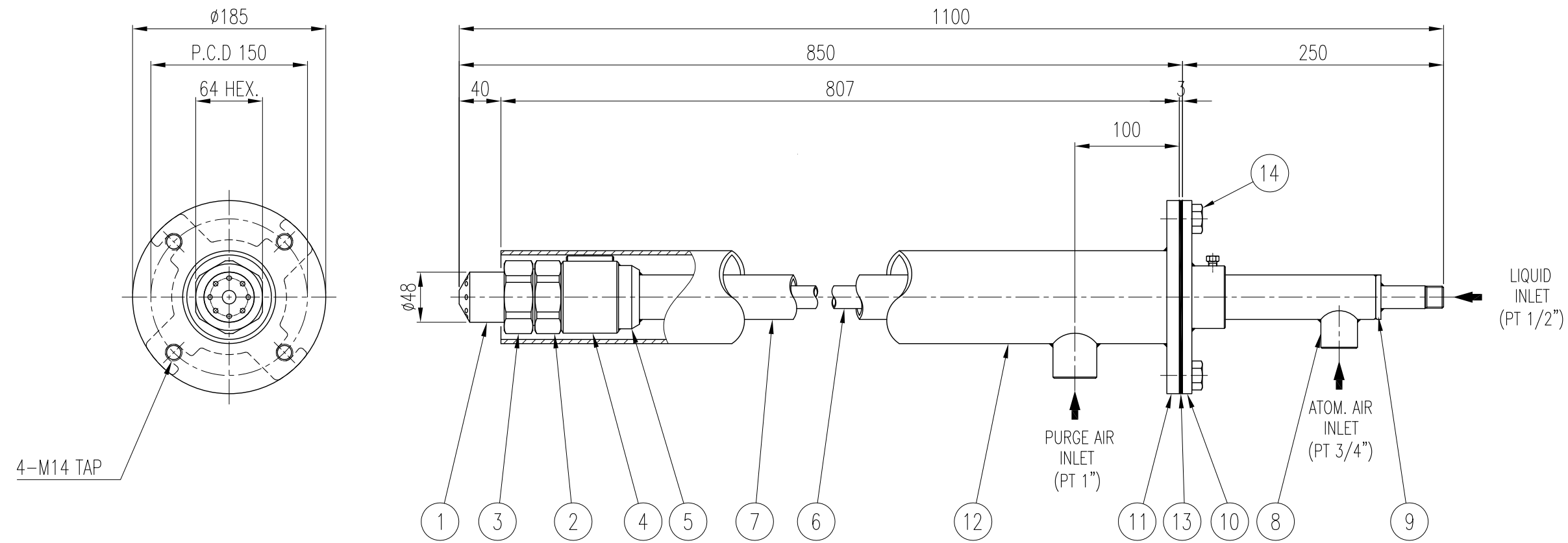
DESC.	KFMN1-200082-310S		CUSTOMER : -	
	Flomax Air atomizing Nozzle		New Part No. : KFMN1-200082-310S	
APP BY.	CH BY.	DES BY.	USA DWG. NO.	BLANK DWG. NO.
S.H.SHIN	J.M.LEE	J.H.YOU		
 <b>Spraying Systems Co., Korea</b>			SCALE : 1/1	DATE : 2017.04.21
			DWG. NO. 56200-082-C4	

지시외 용접치수	절삭가공치수의 지시외 일반치수 허용차 (KS B ISO2768-1 중급)					
	구 분	0.5 이상 3 이하	3 을초과 6 이하	6 을초과 30 이하	30 을초과 120 이하	120 을초과 400 이하
	허 용 차	±0.1	±0.1	±0.2	±0.3	±0.5

SPECIFICATION	
PRESSURE ( XXX ) (kg/cm <sup>2</sup> )	SPRAY ANGLE (±7°) (XXX) ~ (XXX) ~ (XXX) (XXXX) ~ (XXXX) ~ (XXXX) CAPACITY (l/hr ±7%)

지시외 모서리부분	SURFACE ROUGHNESS (KS B 0617)					
C=	다음질기호	~	▽	▽▽	▽▽▽	▽▽▽▽
R=	Rmax		100S	25S	6.3S	0.8S

NO.	DATE	REVISION & DESECIPTION	REVIWED	CHECKED
△				
△				



- SPECIFICATION -

AIR PRESSURE : 3~4 kg/cm<sup>2</sup>  
 LIQUID PRESSURE : 3~4 kg/cm<sup>2</sup>  
 FLOW RATE : 750L/hr

14	BOLT M14x30L	SUS304	4		7	OUTSIDE PIPE (32A x Sch80)	SUS316L	1	
13	GASKET (80A JIS 10K FF)	NON-ASB.	1		6	INSIDE PIPE (15A x Sch40)	SUS316L	1	
12	COOLING PIPE (80A x Sch20)	SUS304	1		5	OUTSIDE PIPE ADAPTER	SUS316L	1	
11	SPECIAL FLANGE (80A)	SUS304	1		4	NOZZLE ADAPTER	SUS316L	1	
10	SPECIAL FLANGE (80A)	SUS304	1		3	AIR CAP NUT (KCP28548-104-316LSS)	SUS316L	1	
9	END PLATE	SUS316L	1		2	FLUID TIP SUB-ASS'Y (KFMT-151234-316LSS)	SUS316L	1	
8	AIR SOCKET (3/4")	SUS316L	1		1	AIR CAP SUB-ASS'Y (KFMA-8-188-55'-310S)	SUS310	1	
ITEM	COMPONENT	MATERIAL	Q'TY	REMARKS	ITEM	COMPONENT	MATERIAL	Q'TY	REMARKS
					DESC.	KFM5-151234-310S-01		CUSTOMER : -	
					Flomax Air atomizing Nozzle			New Part No. : KFM5-151234-310S-01	
					APP BY.	CH BY.	DES BY.	USA DWG. NO.	BLANK DWG. NO.
					S.H.SHIN	J.M.LEE	J.H.YOU		
					<b>Spraying Systems Co., Korea</b>			SCALE : 1/6	DATE : 2017.04.21
								DWG. NO. 56151-234-C2	

지시외 용접치수	절삭가공치수의 지시외 일반치수 허용차 (KS B ISO2768-1 중급)					
	구 분	0.5 이상 3 이하	3 을초과 6 이하	6 을초과 30 이하	30 을초과 120 이하	120 을초과 400 이하
	허 용 차	±0.1	±0.1	±0.2	±0.3	±0.5
지시외 모서리부분	SURFACE ROUGHNESS (KS B 0617)					
C= R=	다듬질기호	~	▽	▽▽	▽▽▽	▽▽▽▽
	Rmax		100S	25S	6.3S	0.8S

SPECIFICATION	
PRESSURE ( XXX ) ( kg/cm <sup>2</sup> )	SPRAY ANGLE (±7°) (XXX) ~ (XXX) ~ (XXX) (XXXX) ~ (XXXX) ~ (XXXX) CAPACITY (l/hr ±20%)

DESC. KFM5-151234-310S-01

Flomax Air atomizing Nozzle

APP BY. S.H.SHIN CH BY. J.M.LEE DES BY. J.H.YOU

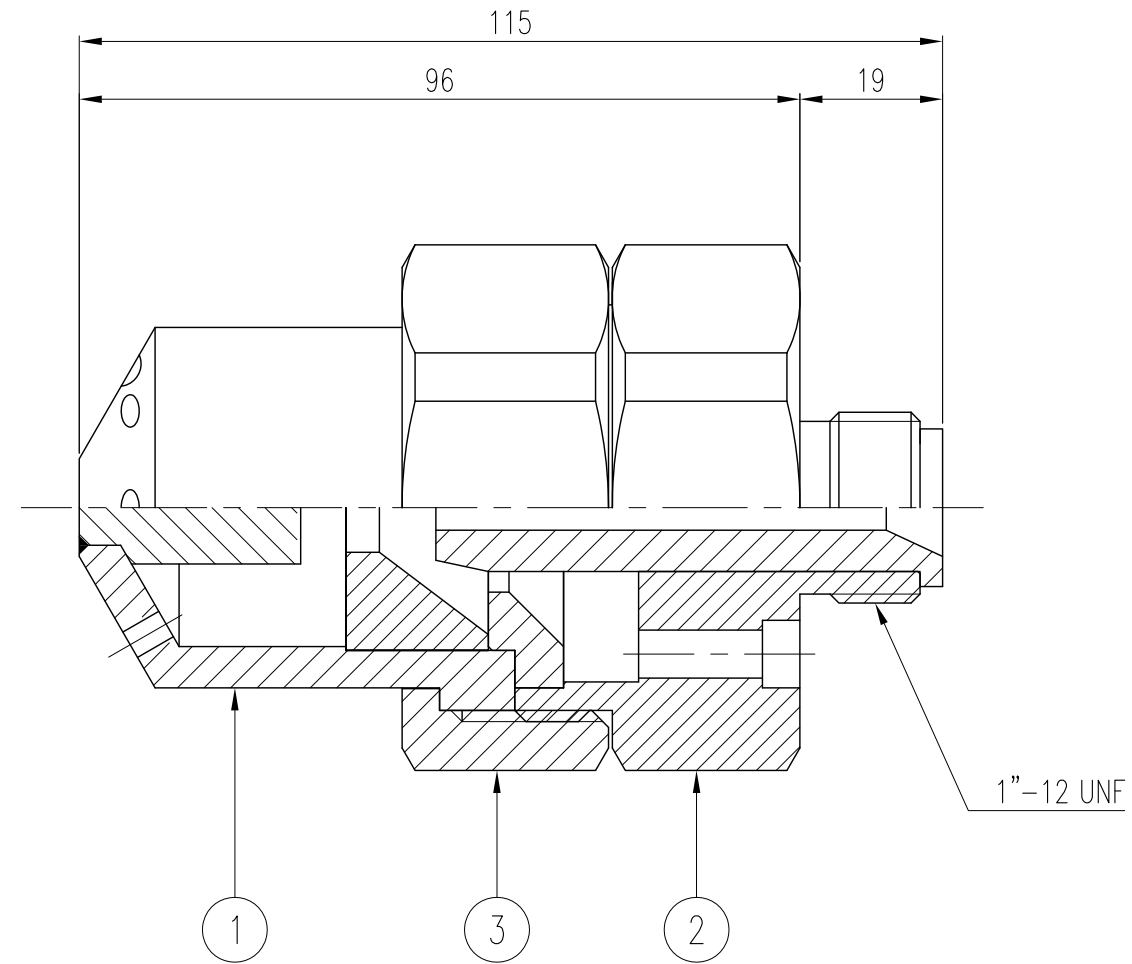
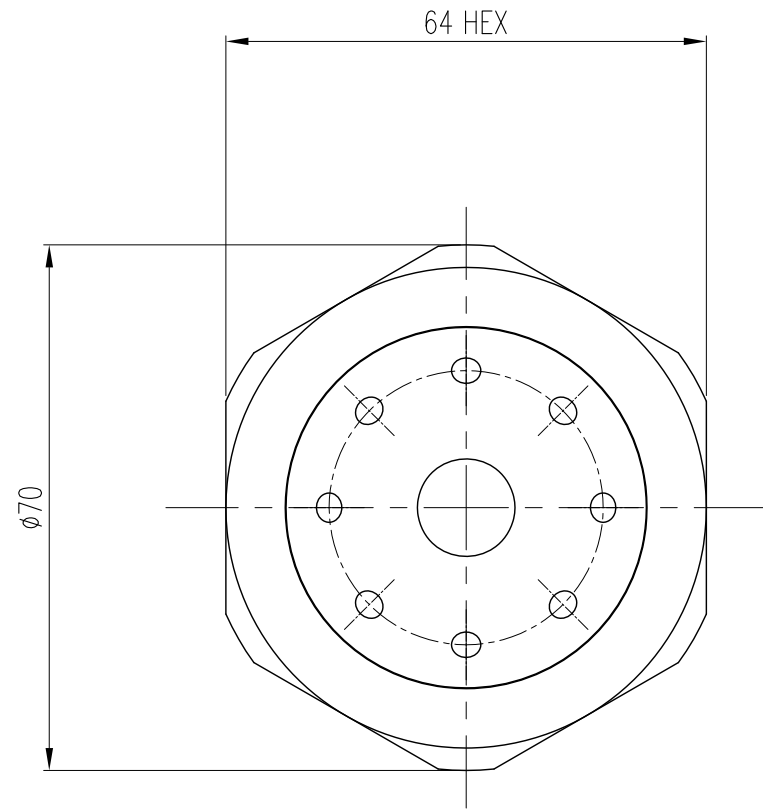
USA DWG. NO. BLANK DWG. NO.

SCALE : 1/6 DATE : 2017.04.21

DWG. NO. 56151-234-C2

**Spraying Systems Co., Korea**

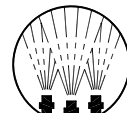
NO.	DATE	REVISION & DESECIPTION	REVIWED	CHECKED
△				
△				

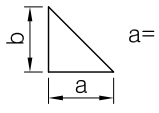


- SPECIFICATION -

AIR PRESSURE : 3~4 kg/cm<sup>2</sup>  
LIQUID PRESSURE : 3~4 kg/cm<sup>2</sup>  
FLOW RATE : 750L/hr

ITEM	COMPONENT	MATERIAL	Q'TY	REMARKS
3	AIR CAP NUT (KCP28548-104-316LSS)	SUS316L	1	
2	FLUID TIP SUB-ASS'Y (KFMT-151234-316LSS)	SUS316L	1	
1	AIR CAP SUB-ASS'Y (KFMA-8-188-55'-310S)	SUS310	1	

DESC.	KFM5-151234-310S		CUSTOMER : -	
	Flomax Air atomizing Nozzle		New Part No. : KFM5-151234-310S	
APP BY.	CH BY.	DES BY.	USA DWG. NO.	BLANK DWG. NO.
S.H.SHIN	J.M.LEE	J.H.YOU		
 <b>Spraying Systems Co., Korea</b>			SCALE : 1/1.5	DATE : 2017.04.21
			DWG. NO. 56151-234-C3	

지시외 용접치수	절삭가공치수의 지시외 일반치수 허용차 (KS B ISO2768-1 중급)					
	구 분	0.5 이상 3 이하	3 을초과 6 이하	6 을초과 30 이하	30 을초과 120 이하	120 을초과 400 이하
	허 용 차	±0.1	±0.1	±0.2	±0.3	±0.5
지시외 모서리부분	SURFACE ROUGHNESS (KS B 0617)					
C= R=	다듬질기호	~	▽	▽▽	▽▽▽	▽▽▽▽
	Rmax		100S	25S	6.3S	0.8S

SPECIFICATION	
PRESSURE ( XXX ) ( kg/cm <sup>2</sup> )	SPRAY ANGLE (±7°) (XXX) ~ (XXX) ~ (XXX)
	(XXXX) ~ (XXXX) ~ (XXXX)
	CAPACITY (ℓ/hr ±7%)