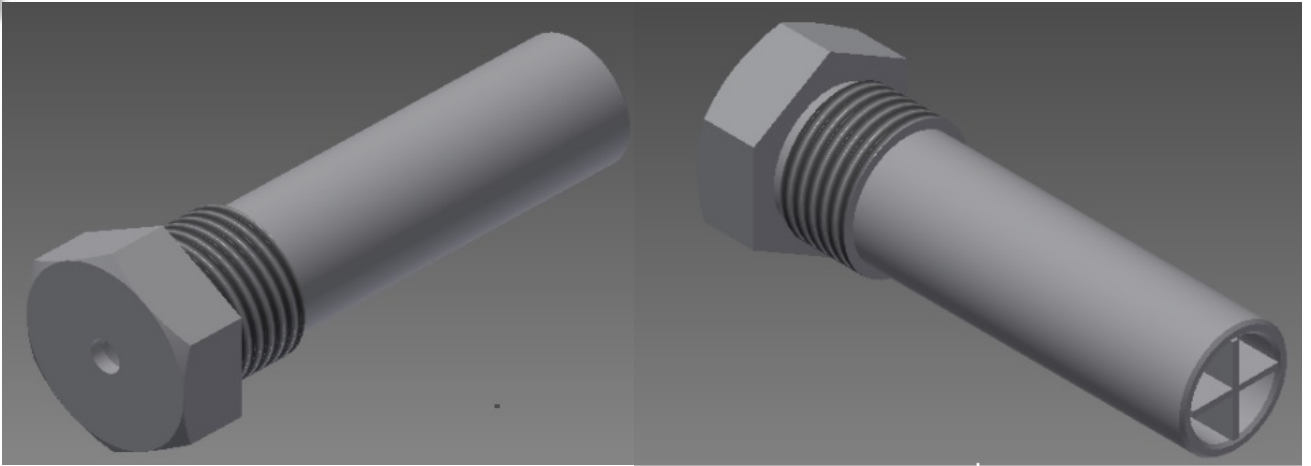
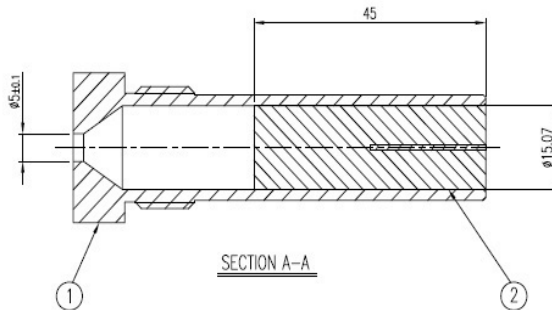
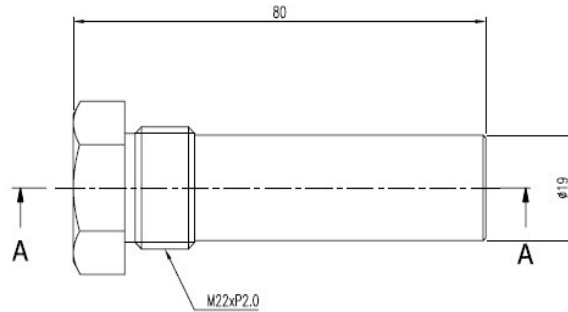
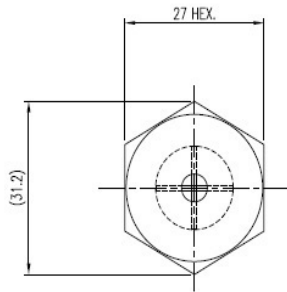




FULLCONE NOZZLE



DIMENSIONS



지시와 용접치수	용석가공치수의 지시와 일반치수 허용치 (KS B ISO2768-1 중급)					
	구 분	0.5 미상 3 미하	3 용초표 6 미하	6 용초표 30 미하	30 용초표 120 미하	120 용초표 400 미하
	허용치	±0.1	±0.1	±0.2	±0.3	±0.5
지시의 표시리부분	SURFACE ROUGHNESS (KS B 0617)					
C=	다듬질기호	~	▽	▽▽	▽▽▽	▽▽▽▽
R=	Rmax	100S	25S	6.3S	0.6S	

SPECIFICATION	
PRESSURE	(XXX) (kg/cm ²)
SPRAY ANGLE (±7°)	(XXX)~(XXX)~(XXX)
	(XXX)~(XXX)~(XXX)
CAPACITY (l/min ±7%)	

2	VANE(CP194108-304SS)	SUS304	1	
1	BODY(B0194108-304SS)	SUS304	1	
ITEM	COMPONENT	MATERIAL	Q'TY	REMARKS
DESC.	M22xP2.0-194108-304SS	CUSTOMER :		
	FULLJET(FULLCONE)	PRODUCT NAME :		
APP BY.	CH BY.	DES BY.	M22xP2.0-194108-304SS	
B.S.KIM	J.M.LEE	J.KIM	SCALE :	CREATE DATE :
		1:1		2014.08.12
		DWG. NO. :		56184-108-A1
Spraying Systems Co., Korea Experts in Spray Technology				



Spraying Systems Co.
Experts in Spray Technology



Spray Nozzles



Spray Control



Spray Analysis



Spray Fabrication

FULLCONE NOZZLE



상세 사양

Spray Angle at 3 bar	Capacity Size	Orifice Diam (mm)									Spray Angle Degree		
			1.5	2	3	4	6	7	15	20	1.5	3	6
0	03	1.0	.84	.97	1.2	1.4	1.7	1.8	2.6	3.1	0	0	0
	04	1.2	1.1	1.3	1.6	1.8	2.2	2.4	3.5	4.1			
	05	1.3	1.4	1.6	2.0	2.3	2.8	3.0	4.4	5.1			
	055	1.4	1.5	1.8	2.2	2.5	3.1	3.3	4.9	5.6			
	06	1.5	1.7	1.9	2.4	2.7	3.4	3.6	5.3	6.1			
	065	1.5	1.8	2.1	2.6	3.0	3.6	3.9	5.7	6.6			
	07	1.6	2.0	2.3	2.8	3.2	3.9	4.2	6.2	7.1			
	08	1.7	2.2	2.6	3.2	3.6	4.5	4.8	7.1	8.2			
	085	1.8	2.4	2.7	3.4	3.9	4.7	5.1	7.5	8.7			
	9	1.8	2.5	2.9	3.6	4.1	5.0	5.4	7.9	9.2			
	10	1.9	2.8	3.2	3.9	4.6	5.6	6.0	8.8	10.2			
	12	2.1	3.4	3.9	4.7	5.5	6.7	7.2	10.6	12			
	15	2.3	4.2	4.8	5.9	6.8	8.4	9.0	13	15			
	20	2.7	5.6	6.4	7.9	9	11	12	18	20			
	30	3.3	8.4	9.7	12	14	17	18	26	31			
	40	3.8	11.2	13	16	18	22	24	35	41			
	50	4.2	14	16	20	23	28	30	44	51			
	60	4.6	17	19	24	27	34	36	58.3	61			
	70	5.0	19.5	23.0	28.0	32.0	39.0	42.0	62.0	71.0			
	80	5.3	22.0	26.0	32.0	36.0	45.0	48.0	71.0	82.0			
100	6.0	28.0	32.0	39.0	46.0	56.0	60.0	88.0	102				
120	6.8	34.0	39.0	47.0	55.0	67.0	72.0	106	122				
150	7.3	42.0	48.0	59.0	68	84	90	132	153				
165	7.7	46.0	53.0	65	75	92	100	146	168				
200	8.5	56.0	64	79	91	112	121	177	204				

ORDERING INFO

SPRAY PRODUCT NAME				
M22xP2.0 – 1094108 – STS304 – 70				
Spray Screw Type	Drawing No.	Material Code	Capacity Size	



Spraying Systems Co.
Experts in Spray Technology



Spray Nozzles



Spray Control



Spray Analysis



Spray Fabrication