



LUBRICATION/COOLING/STRIP WASH-OFF



PERFORMANCE – VEEJET STANDARD NOZZLES

* At the stated pressure in bar.

Spray Angle Degree at 3Bar	Nozzle Type / Inlet Conn.(in.)					Capacity size	Capacity (Liter per Minute)										Spray Angle		
	H-U						1	2	3	4	5	6	7	10	20	3	6	14	
	1/8	1/4	3/8	1/2	3/4		bar	bar	bar	bar	bar	bar	bar	bar	bar	bar	bar	bar	
120	●	●				10	2.3	3.2	3.9	4.6	5.1	5.6	6.0	7.2	10.2	120	127	129	
	●	●	●			20	4.6	6.5	7.9	9.1	10.2	11.2	12.1	14.4	20	120	127	129	
	●	●	●			30	6.8	9.7	11.8	13.7	15.3	16.7	18.1	22	31	120	127	129	
	●	●	●			40	9.1	12.9	15.8	18.2	20	22	24	29	41	120	127	129	
		●	●			50	11.4	1.61	19.7	23	25	28	30	36	51	120	127	129	
		●	●			60	13.7	19.3	24	27	31	33	36	43	61	120	127	129	
		●	●	●		80	18.2	26	32	36	41	45	48	58	82	120	126	128	
				●		125	28	40	48	56	62	68	73	87	124	120	126	128	
				●		150	34	48	59	68	76	84	90	108	153	120	126	128	
				●	●	170	36	52	67	76	86	95	103	124	179	120	126	128	
				●	●	200	46	64	79	91	102	112	121	144	205	120	125	128	
			●	●	230	50	72	91	106	120	132	143	172	205	120	125	128		
150	●	●				10	2.3	3.2	3.9	4.6	5.1	5.6	6.0	7.2	10.2	150	157	159	
	●	●	●			20	4.6	6.5	7.9	9.1	10.2	11.2	12.1	14.4	20	150	157	159	
	●	●	●			30	6.8	9.7	11.8	13.7	15.3	16.7	18.1	22	31	150	157	159	
	●	●	●			40	9.1	12.9	15.8	18.2	20	22	24	29	41	150	157	159	
		●	●			50	11.4	1.61	19.7	23	25	28	30	36	51	150	157	159	
		●	●			60	13.7	19.3	24	27	31	33	36	43	61	150	157	159	
		●	●	●		80	18.2	26	32	36	41	45	48	58	82	150	156	158	
				●		125	28	40	48	56	62	68	73	87	124	150	156	158	
				●		150	34	48	59	68	76	84	90	108	153	150	156	158	
				●	●	170	36	52	67	76	86	95	103	124	179	150	156	158	
				●	●	200	46	64	79	91	102	112	121	144	205	150	155	158	
			●	●	230	50	72	91	106	120	132	143	172	205	150	155	158		
170	●	●				10	2.3	3.2	3.9	4.6	5.1	5.6	6.0	7.2	10.2	170	177	179	
	●	●	●			20	4.6	6.5	7.9	9.1	10.2	11.2	12.1	14.4	20	170	177	179	
	●	●	●			30	6.8	9.7	11.8	13.7	15.3	16.7	18.1	22	31	170	177	179	
	●	●	●			40	9.1	12.9	15.8	18.2	20	22	24	29	41	170	177	179	
		●	●			50	11.4	1.61	19.7	23	25	28	30	36	51	170	176	178	
		●	●			60	13.7	19.3	24	27	31	33	36	43	61	170	176	178	
		●	●	●		80	18.2	26	32	36	41	45	48	58	82	170	176	178	
		●	●	●		100	28	40	48	56	62	68	73	87	124	170	175	177	

ORDERING INFO

STANDARD SPRAY NOZZLE					
H	3/8	U	-	SS	150 125E
↓	↓	↓	↓	↓	↓
Nozzle	Inlet	Nozzle	Material	Spray	Capacity
Profile	Conn.	Type	Code	Angle	Size

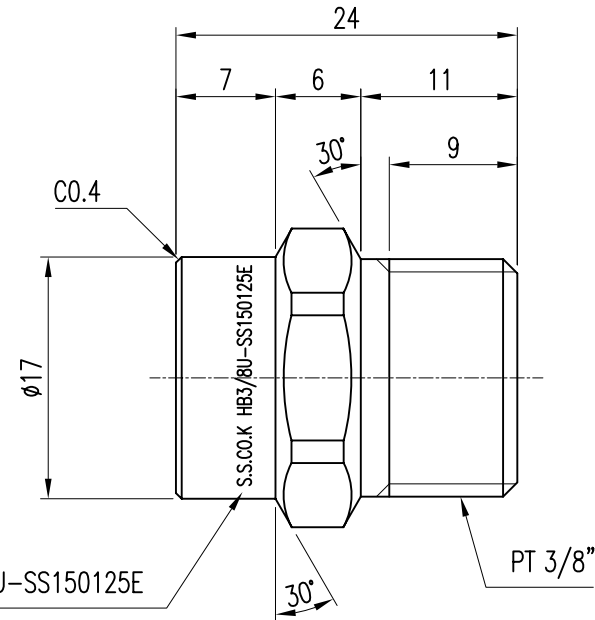
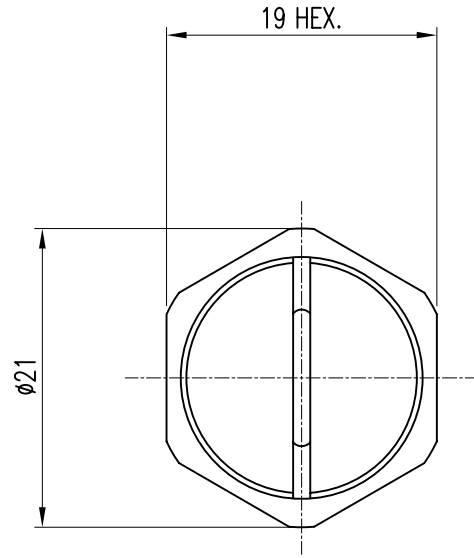
STANDARD SPRAY NOZZLE					
H	3/8	U	-	SS	150 170E
↓	↓	↓	↓	↓	↓
Nozzle	Inlet	Nozzle	Material	Spray	Capacity
Profile	Conn.	Type	Code	Angle	Size



Spraying Systems Co.®

Phone 1-800-95-SPRAY, Fax 1-888-66-SPRAY
 Outside the U.S., Phone 1(830) 665-5000, Fax 1(830) 280-0842
 Visit our Web Site: www.spray.com, email: info@spray.com

NO.	DATE	REVISION & DESECRPTION	REVIWED	CHECKED
△				
△				



MARK(1.5mm):S.S.CO.K HB3/8U-SS150125E

NOZZLE NO.	PRESSURE (Kg/Cm ²)	CAPACITY (l/min)	ANGLE (°)	MATERIAL
KHB3/8U-SS150125E	3.0	48	150	SUS303

ITEM	COMPONENT	MATERIAL	Q'TY	REMARKS
1	BODY	SUS303		
DESC.	KHB3/8U-SS150125E VEEJET	DATE : 2012.07.04 SCALE : 1/1	DES BY: Y.Y.LIM CH BY :	
CUSTOMER :		DWG. NO. 3-8U 150125E		

지시외 용접치수	절삭가공치수의 지시외 일반치수 허용차 (KS B ISO2768-1 중급)					
	구경	0.5 이상 3 이하	3 을초과 6 이하	6 을초과 30 이하	30 을초과 120 이하	120 을초과 400 이하
	허용차	±0.1	±0.1	±0.2	±0.3	±0.5
지시외 모서리부분	SURFACE ROUGHNESS (KS B 0617)					
C=	다들칠기호	~	▽	▽▽	▽▽▽	▽▽▽▽
R=	Rmax		100S	25S	6.3S	0.8S

SPECIFICATION	
PRESSURE (XXX) (kg/cm ²)	SPRAY ANGLE (±5°) (XXX) ~ (XXX) ~ (XXX)
	(XXX) ~ (XXX) ~ (XXX)
	CAPACITY (l/min ±5%)



Spraying Systems Co., Korea