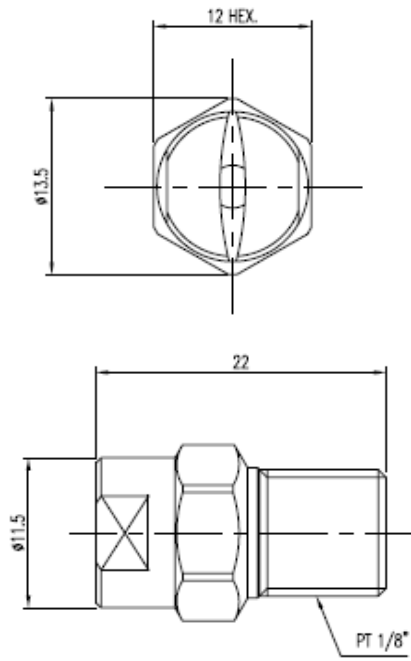


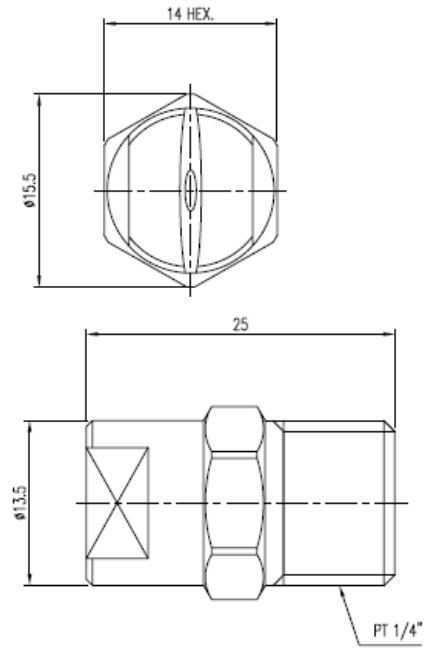
	주문 번호	오리피스 직경(mm)	Spray FlowRate ( ℓ/min )			Spray Angle ( ° )
			1.0kg/cm <sup>2</sup>	2.0kg/cm <sup>2</sup>	3.0kg/cm <sup>2</sup>	
1	H1/8U-KSH0215	1.6	1.2	1.6	2.0	15
2	H1/4U-KBH0465	2.0	2.3	3.3	4.0	65
3	H1/4U-KSH02110	1.6	1.2	1.6	2.0	110
4	H1/4U-KSH0490	2.0	2.3	3.2	4.0	90
5	H1/4U-KSH0865	2.8	4.5	6.4	8.0	65
6	H1/4U-KBH1060	3.4	5.8	8.2	10.0	60
7	H1/4U-KSH1060	3.4	5.8	8.2	10.0	60
8	H1/4U-KBH1080	3.4	5.8	8.2	10.0	80
9	H1/4U-KSH1525	4.0	8.7	12.3	15.0	25
10	H1/4U-KBH1560	4.0	8.7	12.3	15.0	60
11	H1/4U-KBH1580	4.0	8.7	12.3	15.0	80
12	H1/4U-KBH2050	4.5	11.6	16.3	20.0	50
13	H1/4U-KBH2050 WITH BALLJOINT 3/8*1/4	4.5	11.6	16.3	20.0	50
14	H1/4U-KBH2065	4.5	11.6	16.3	20.0	65
15	H1/4U-KBH2080	4.5	11.6	16.3	20.0	80
16	H1/4U-KBH2515 WITH BALLJOINT 3/8*1/4	5.0	14.4	20.4	25.0	15
17	H1/4U-KBH2618	5.1	15.0	21.2	26.0	18
18	H1/4U-KSHR1225	3.4	6.9	9.7	12.0	25
19	H1/4U-KSHR1355	3.8	7.5	10.6	13.0	55
20	B1/4TT-SS+TPU650050-SS	0.46	0.12	0.16	0.2	65
21	H3/8U-KSH1560	4.0	8.7	12.3	15.0	60
22	H3/8U-KSH2060	4.5	11.6	16.3	20.0	60
23	H3/8U-KSH2215	4.6	12.7	18.0	22.0	15
24	H3/8U-KSH3060	5.4	17.3	24.5	30.0	60
25	H3/8U-KSH4050	6.4	23.0	32.6	40.0	50
26	H3/8U-KSH4060 WITH BALLJOINT 3/8*3/8	6.4	23.0	32.6	40.0	60
27	H3/8U-KSH4060	6.4	23.0	32.6	40.0	60
28	H3/8U-KBH40100	6.4	23.0	32.6	40.0	100
29	H3/8U-KSH5060	6.8	28.9	40.8	50.0	60
30	H3/8U-KSH6060	7.5	34.6	49.0	60.0	60
31	H3/8U-KSH7060	8.2	40.4	57.2	70.0	60
32	H3/8U-KSHR0880	2.8	4.5	6.4	8.0	80
33	H3/8U-KSHR0980	3.4	5.3	7.2	9.0	80

34	H3/8U-KSHR2525	4.8	13.6	19.3	24.0	25
35	H1/2U-KSH1925	4.4	11.0	15.5	19.0	25
36	H1/2U-KSH1940	4.4	11.0	15.5	19.0	40
37	H1/2U-KSH2040	4.5	11.6	16.3	20.0	40
38	H1/2U-KSH2525	5.0	14.4	20.4	25.0	25
39	H1/2U-KSH2540	5.0	14.4	20.4	25.0	40
40	H1/2U-KSH2640	5.1	15.0	21.2	26.0	40
41	H1/2U-KSH2820	5.2	16.2	22.9	28.0	20
42	H1/2U-KSH2840	5.2	16.2	22.9	28.0	40
43	H1/2U-KSH3035	5.4	17.3	24.5	30.0	35
44	H1/2U-KSH3040	5.4	17.3	24.5	30.0	40
45	H1/2U-KSH3440	5.6	19.6	27.8	34.0	40
46	H1/2U-KSH3540	5.6	20.2	28.6	35.0	40
47	H1/2U-KSH3740	5.6	21.4	30.2	37.0	40
48	H1/2U-KSH4025	6.4	23.0	32.6	40.0	25
49	H1/2U-KSH4040	6.4	23.0	32.6	40.0	40
50	H1/2U-KSH4840	6.7	27.7	39.2	48.0	40
51	H1/2U-KSH5025	6.8	28.9	40.8	50.0	25
52	H1/2U-KSH5040	6.8	28.9	40.8	50.0	40
53	H1/2U-KSH6350	7.5	34	48	59.0	50
54	H1/2U-KSH7140	8.7	45	64	79.0	40
55	H1/2U-KSHR1225	3.4	6.9	9.7	11.8	25
56	H1/2U-KSHR1535	3.9	9.1	12.9	15.8	35
57	H1/2U-KSHR2035	4.5	11.6	16.3	20.0	35
58	H1/2U-KSHR5035	6.8	28.9	40.8	50.0	35
59	H1/2U-KSHR7025	8.2	40.4	57.2	70.0	25
60	H1/2U-KSHR7525	8.2	43.3	61.2	75.0	25
61	H1/2U-KSHR8035	8.3	46.2	65.3	80.0	35
62	H1/2U-KSHR9015	9.0	52.0	73.5	90.0	15
63	H1/2U-KSHR9025	9.0	52.0	73.5	90.0	25
64	H1/2U-KSHR10035	9.6	57.7	81.7	100.0	35
65	H3/4U-KSH9360	9.2	53.7	75.9	93.0	60
66	H3/4U-KSH15260	15.0	87.8	124	152.0	60
67	H1U-KSH11500	10.0	66.4	93.9	115.0	0

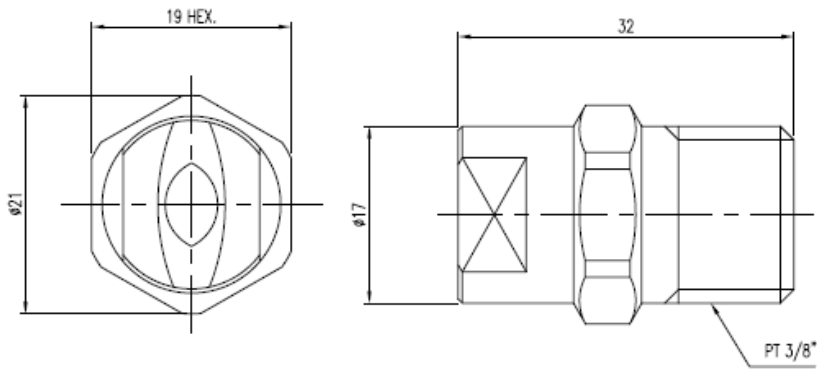
< H1/8U-KSH >



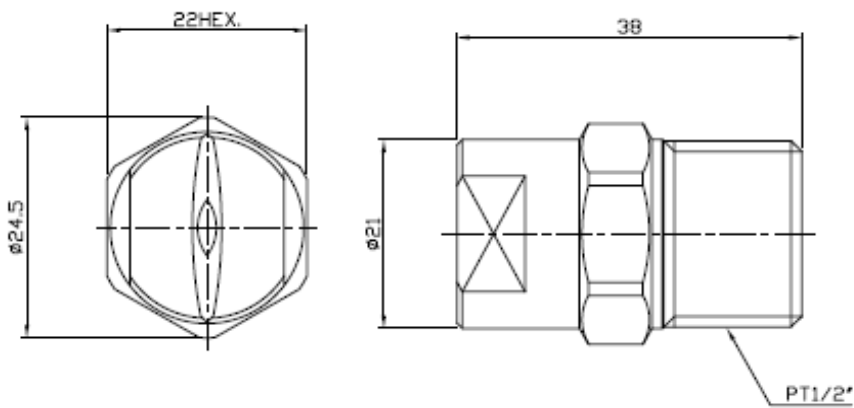
< H1/4U-KSH >



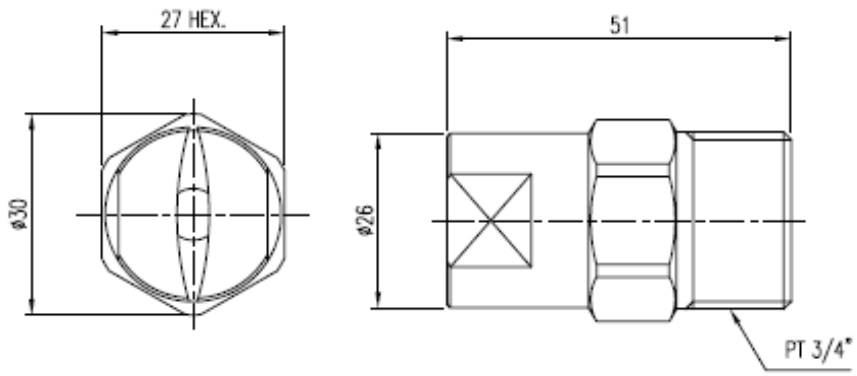
< H3/8U-KSH >



< H1/2U-KSH >



<H3/4U-KSH>



<H1U-KSH>

